

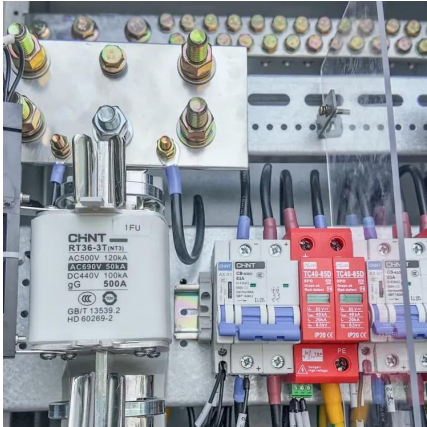
# **Photovoltaic power station inverter loss at night**





## Photovoltaic power station inverter loss at night

---



### What is the difference between an inverter and a ...

On the other hand, an inverter is a device that converts DC power from a battery or other power source into AC power for use by electronic devices. Inverters ...

### What happens when utility power goes out and you have solar

Discussion of solar photovoltaic systems, modules, the solar energy business, solar power production, utility-scale, commercial rooftop, residential, off-grid systems and more. Solar ...



### Use of solar PV inverters during night-time for voltage regulation ...

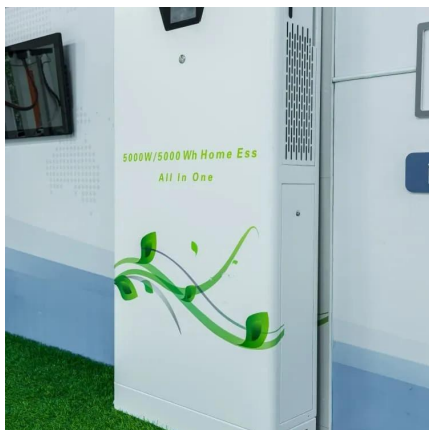
This paper demonstrates, numerically and experimentally, the operation of a PV inverter in reactive power-injection mode when solar energy is unavailable.

### Understanding the Q at Night Function in Solar Power Inverters

The Q at Night function allows solar power inverters to provide reactive power support even



when solar generation is not occurring. This capability is particularly beneficial ...



### [Photovoltaic inverters have losses at night](#)

Do PV inverters need active power during night hours? Although the number of PV installations is rapidly growing, the effective utilization of PV inverters remains low. As even if inverters are to ...

### **Photovoltaic inverter at night svg**

Can the inverter be compensated at night? In the power transmission, the inverter in the photovoltaic power station, if the active and reactive power can be effectively controlled, is the ...



### [What Happens If You Have Solar And The Power ...](#)

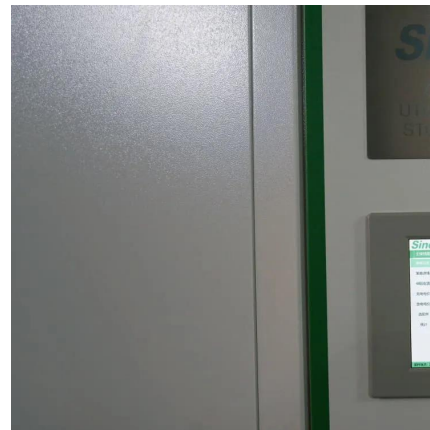
How can you use solar power to survive a power outage? If you want to keep your home up and running when the power goes out, there are a few ways to ...





## Solar Transformers: Sizing, Inverters, and E-Shields

Learn all about transformer sizing and design requirements for solar applications--inverters, harmonics, DC bias, overload, bi-directionality, ...



## Consistency control of grid-connected substation voltage ...

To address this, a consistency control method for the voltage regulation in the grid-connected substations is proposed, based on the photovoltaic-inverter power coordination.

## Reactive power control through the night

In certain constellations, photovoltaic systems also generate capacitive power dissipations through the night. To ensure that reactive power ...



## Q at Night

If the AC power generated by the inverter falls below 5 kW, the inverter switches from feed-in operation to "Q at Night" operation. The inverter feeds in reactive power in accordance with ...





## Use of solar PV inverters during night-time for voltage regulation ...

With the function of "night reactive power compensation", the inverter can maintain the connection to the public grid on the AC side all night, ...

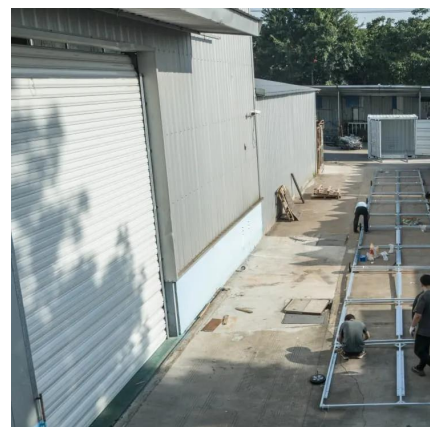


## Do Solar Inverters Turn Off At Night?

Have you ever wondered if solar inverters turn off at night? The answer may surprise you! Solar inverters, the essential components of solar power ...

## Reactive Power Control in Utility-Scale PV Plants

Dynamic control of operating values. Inverter adjusts operating values for power-factor or reactive-power rate according to operator's commands. Industrial solar power ...



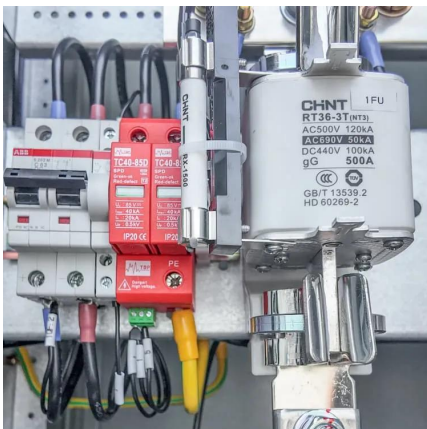


## Understanding the Q at Night Function in Solar Power ...

The Q at Night function allows solar power inverters to provide reactive power support even when solar generation is not occurring. This ...

## Does Solar Inverter Work at Night? Unveiling the ...

No, a solar inverter does not work at night. This is because solar inverters require sunlight to produce energy, so when the sun goes down, they ...

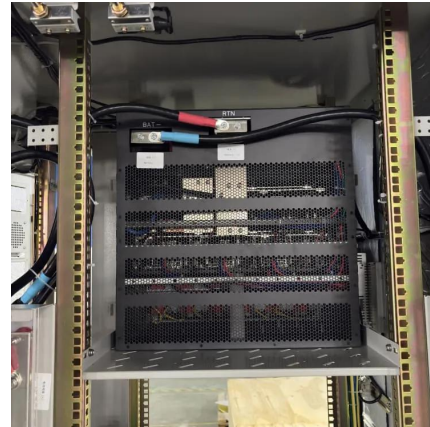


## Ultimate guide to utility-scale PV system losses -- ...

As the rollout of solar photovoltaic (PV) capacity ramps up, it is important for plant designs to avoid system losses and maximize output of ...

## Does Solar Inverter Work at Night? Unveiling the Facts and

No, a solar inverter does not work at night. This is because solar inverters require sunlight to produce energy, so when the sun goes down, they stop producing electricity. When ...



## Solar Power Station

A solar power station is a facility that generates electricity by converting sunlight into electricity using solar panels, which consist of multiple solar cells. These stations can range in size from ...



### Can the inverter be compensated at night?

With the function of "night reactive power compensation", the inverter can maintain the connection to the public grid on the AC side all night, and only consume a small amount of ...



## Using PV inverters for voltage support at night can lower grid costs

Voltage support at night reduces solar inverter lifetimes by one additional year. Policies that compensate PV owners for use at night are feasible and effective. Areas with ...





## Does a Solar Inverter Work at Night? Here's the Real Answer

If you're exploring solar energy, you might wonder how the system works, especially at night. One common question is, "Does a solar inverter work at night?" In this ...

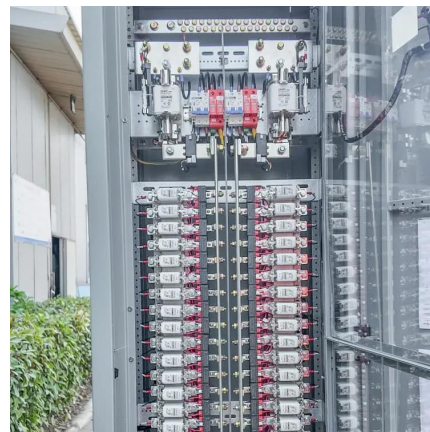


## Photovoltaic power station inverter power consumption at night

ic (PV) inverters are vital components for future smart grids. Although the popularity of PV-generator installations is high, their effective performance remains low. Certain inverters are ...

## Do Solar Inverters Turn Off At Night?

Have you ever wondered if solar inverters turn off at night? The answer may surprise you! Solar inverters, the essential components of solar power systems, do not actually turn off when the ...



## Does a Solar Inverter Work at Night? Here's the Real Answer

No, solar inverters don't work at night. They rely on sunlight to convert DC power into AC power. At night, your system will use stored energy from the battery or the grid. Solar ...





## Why Your Photovoltaic Inverter Goes Dark at Night (And When to ...)

Ever walked past your photovoltaic inverter at night like a concerned parent checking a sleeping child? That blank display can be downright unsettling. Let's cut through the darkness - literally ...



## Should I Leave My Inverter On All the Time?

Inverters are required to run AC appliances on solar power. From homes to RVs they are fixtures in PV systems. But is it safe to leave an inverter on all the time? Or should you turn it off every ...

## What Happens to Solar Inverters at Night? Do They Shut Down?

Solar inverters don't exactly "shut down" during nighttime; instead, their operational status varies based on factors like energy production, grid connectivity, and system design. ...





## Contact Us

---

For catalog requests, pricing, or partnerships, please visit:  
<https://www.talbert.co.za>