

Photovoltaic communication base station 6KW960KWh





Photovoltaic communication base station 6KW960KWh

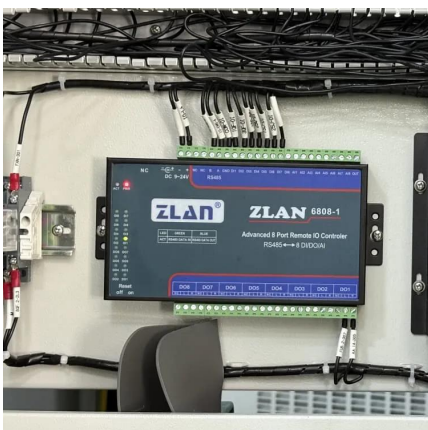


[Large-scale Outdoor Communication Base Station](#)

Discover the Large-scale Outdoor Communication Base Station, designed for smart cities, communication networks, and power systems. Integrated with ...

[EK-SG-R01 Communication container station-](#)

EK-SG-R01 is a large outdoor base station with large capacity and modular design. This series of products can integrate photovoltaic and wind clean energy, energy storage batteries, and ...



[Indoor Photovoltaic Telecom Energy Cabinet](#)

The table below consolidates key specs for LZY Energy Indoor Photovoltaic Energy Cabinet models. Indoor, floor-standing models all feature AC output, photovoltaic input, and energy ...

Base Station Solar Storage Integrated System Solution

(86)-755-23091100 (86)-755-23091101 Follow us
Case study African Photovoltaic Base Station



Project IPANDEE About 3,000 independent photovoltaic communication base station projects ...



How Solar Energy Systems are Revolutionizing Communication ...

This component monitors the power of the solar power system and switches the AC loads to draw energy from the backup diesel generator, if the output power is less than ...



Communication base station-solar power supply ...

Communication base stations located in remote areas can generally only draw electricity from rural power grids, with poor grid stability, long transmission ...



Communication Base Station Smart Hybrid PV Power Supply ...

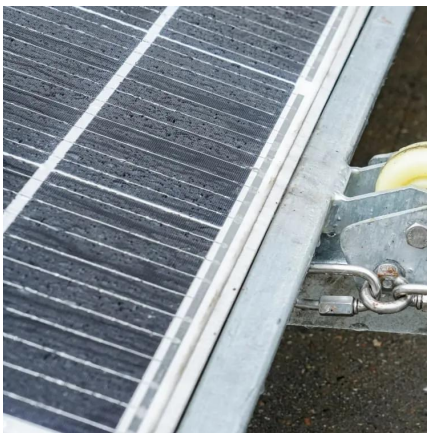
The Ipandee hybrid PV Direct Current (DC) Power Supply System is a green energy power supply solution specifically designed for communication operators to save energy, reduce carbon ...





Photovoltaic communication base stations on the grassland

Photovoltaic communication base stations on the grassland. Copy prompt. Copy URL. Open in editor. Explore this style. Model. Lexica Aperture v3.5



Large-scale Outdoor Communication Base Station , Reliable

Discover the Large-scale Outdoor Communication Base Station, designed for smart cities, communication networks, and power systems. Integrated with solar, wind, and energy storage ...

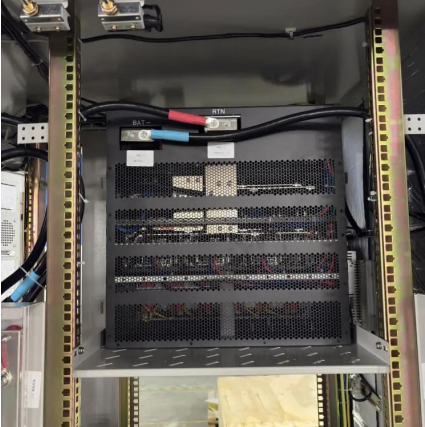
Photovoltaic (PV) communications base station

The system is mainly composed of solar modules, Photovoltaic controller, battery, AC/DC inverter, etc. It can supply power to remote communication station and ensure normal operation of ...



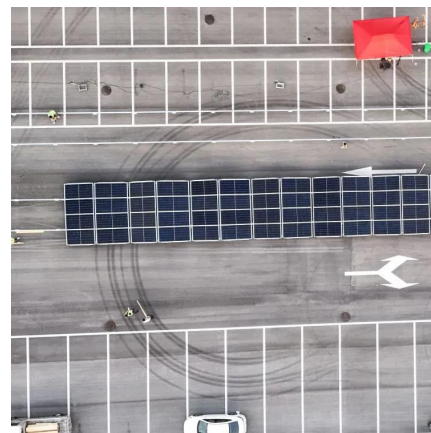
Communication base station photovoltaic panel solar installation

The independent communication base station power system adopts solar power supply, which can effectively solve the electricity problem in areas where the grid is difficult to extend, and ...



48V Intelligent Lithium Battery , Communication ...

Backup power supply in the communication base station Emergency power supply wired communication Bureaus (stations), switching ...



solar power for Base station

For example, installing a system composed of multiple high-efficiency solar panels, equipped with smart controllers and high-performance batteries, enables the base station to ...



Telecom Base Station PV Power Generation System Solution

The communication base station installs solar panels outdoors, and adds MPPT solar controllers and other equipment in the computer room. The power generated by solar energy is used by ...





PHOTOVOLTAIC PV COMMUNICATIONS BASE STATION

The largest solar photovoltaic power station in Italy The following page lists power stations in . . Installed capacity in Italy was less than 100 MW before 2008. Growth accelerated during 2008 ...

Communication Base Station Smart Hybrid PV Power Supply ...

The system is mainly used for the Grid-PV Hybrid solution in telecom base stations and machine rooms, as well as off-grid PV base stations, Wind-PV hybrid power base stations and Diesel ...



IPANDEE PV Adapter and Intelligent Combiner Box Specialized ...

The photovoltaic adapter has a protection level of IP68, and its service life can reach 10~15 years. By far, IPANDEE has provided stacked photovoltaic controllers, MPPT solar controllers, ...

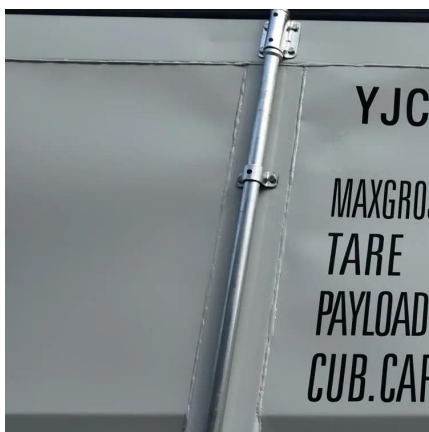
Types and Applications of Mobile Communication ...

Mobile communication base station is a form of radio station, which refers to a radio transceiver station that transmits information between mobile ...



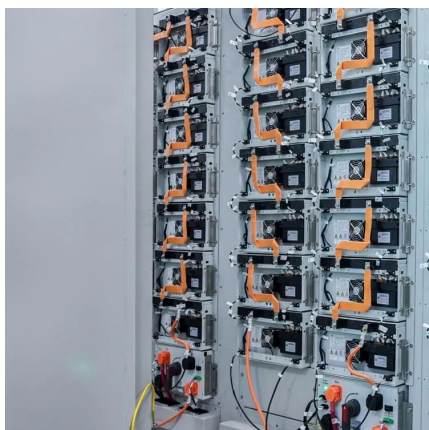
Telecom Base Station PV Power Generation System Solution

Single Photovoltaic Power Supply System (no AC power supply) The communication base station installs solar panels outdoors, and adds MPPT solar controllers and other equipment in the ...



Solar Power Supply Solution for Communication Base Stations

Imagine a base station where excess solar energy powers AI-based network optimization. Vodafone's pilot in Kenya does exactly that--their solar arrays now handle 83% of site load ...



Multi-objective interval planning for 5G base station virtual power

Large-scale deployment of 5G base stations has brought severe challenges to the economic operation of the distribution network, furthermore, as a new type of adjustable load, ...



Multi-objective interval planning for 5G base station virtual ...

Multi-objective interval planning for 5G base station virtual power plants considering the consumption of photovoltaic and communication flexibility Dawei Zhang¹



Design of photovoltaic energy storage solution for ...

This paper explores the integration of distributed photovoltaic (PV) systems and energy storage solutions to optimize energy management in 5G base stations. By utilizing IoT characteristics, ...

solar power for Base station

For example, installing a system composed of multiple high-efficiency solar panels, equipped with smart controllers and high-performance ...



COMMUNICATION BASE STATIONS APPLICATION EXAMPLES PHOTOVOLTAIC

Price of batteries commonly used in communication base stations The global Battery for Communication Base Stations market size is projected to witness significant growth, with an ...



How Solar Energy Systems are Revolutionizing Communication Base Stations?

This component monitors the power of the solar power system and switches the AC loads to draw energy from the backup diesel generator, if the output power is less than ...



Contact Us

For catalog requests, pricing, or partnerships, please visit:
<https://www.talbert.co.za>