

Outdoor power supply connected to indoor





Overview

How many wires do I need for an outdoor evaporator unit?

There are typically two sets of wires required: Circuit Breaker to Disconnect Switch: These wires supply power from the main electrical panel to the disconnect switch located near the outdoor unit. Outdoor Unit to Indoor Unit: This wire connects the outdoor compressor unit to the indoor evaporator unit, carrying both power and control signals.

Why do you need a wiring diagram for indoor units?

Wiring errors or improper connections can lead to malfunctions or even damage to the system. Overall, the wiring diagram for indoor units in a VRF system serves as a guide for HVAC technicians during the installation process. It helps them understand the electrical connections and ensure that the system is wired correctly.

What is the difference between indoor and outdoor air conditioning units?

The indoor unit includes the evaporator coil and the blower fan, while the outdoor unit houses the compressor and the condenser coil. The two units are connected by refrigerant and electrical lines. Looking at the wiring diagram, you will notice various symbols representing the different components and wires.

What are aircon power supply wires?

The power supply wires are responsible for providing electricity to the aircon unit. They connect the indoor unit to the main power supply and typically consist of wires for the live, neutral, and ground connections.

What is the difference between indoor and outdoor refrigerant units?

The outdoor unit houses the compressor, condenser, and expansion devices, while the indoor units are located in each zone where heating or cooling is required. The refrigerant piping connects the outdoor and indoor units,



allowing the flow of refrigerant between them.



Outdoor power supply connected to indoor

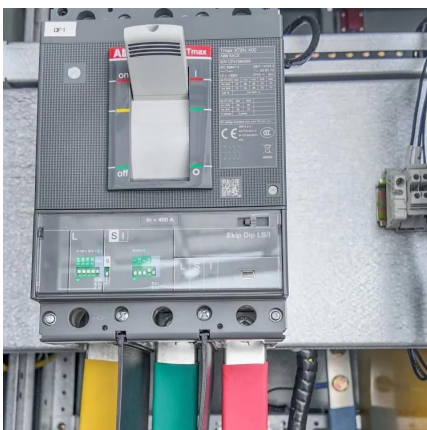


Are mini-split indoor units powered via the outdoor unit or do they

Are mini-split indoor units powered via the outdoor unit or do they require power supply from inside the home? From the installation manuals I've seen, It appears that power is run from the ...

Split ac indoor outdoor wiring air conditioner , split ac ...

Connects up to 5 indoor units to a single power supply outdoor unit. Installs a complete air conditioning project system to multiple zone interior spaces with ...



DIY

DIY - This is an electrical wiring diagram for an LG Dual Inverter Air Conditioner, illustrating the connection between the indoor unit, outdoor unit, and the main power supply.

Multi-Split Type Air Conditioner , Daikin Philippines

Connect up to 5 air conditioners in one outdoor unit with Daikin's Multi-Split Type. This ensures



higher comfort levels than other non-inverter aircons.



A Guide to Split Type Air Conditioner Wiring Diagrams

Split type air conditioners are composed of two main units - the indoor unit and the outdoor unit. The indoor unit includes the evaporator coil and the blower fan, while the outdoor unit houses ...



What's the Difference Between Indoor and Outdoor LED Power Supplies?

Choosing between an indoor and an outdoor LED power supply involves considering environmental resilience, thermal management, construction quality, and electrical specifications.



Indoor/Outdoor Power Adapter USB-C

Box Includes DC Power Supply with USB-C Connector Outdoor AC Power Cable Indoor AC Plug Plate Wall Mounting Screws and Wall Plugs Cable Clips User Guide Warranty One-year ...





Indoor and Outdoor Power Strips: What You Need to ...

Discover the key differences between indoor and outdoor power strips, and learn which one suits your environment for safe and efficient power ...



Are mini-split indoor units powered via the outdoor unit or do they

Are mini-split indoor units powered via the outdoor unit or do they require power supply from inside the home? From the installation manuals I've seen, It appears that power is ...

Outdoor AC Unit Wiring: A Comprehensive Guide for Safe and ...

Understanding the Basics of Outdoor AC Unit Wiring The wiring of an outdoor AC unit, also known as a condenser or heat pump, involves specialized electrical circuitry ...



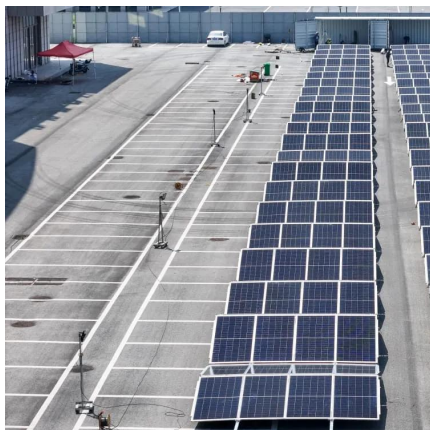
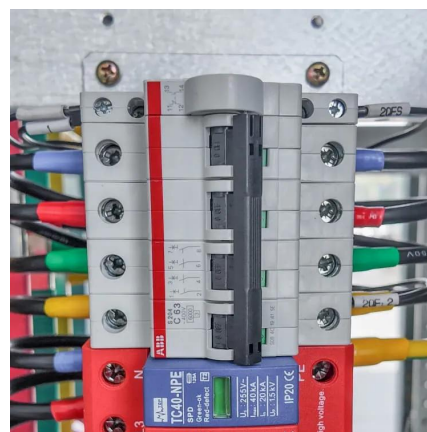
Best way to connect off-grid outdoor solar array to indoor power

Got the AIO power station, ordered the transfer switch, ordered the panels, but now I'm looking at how to get the solar panels connected to the power station. It uses MC4 ...



[1060 weekC \(CH46\) Flashcards , Quizlet](#)

Study with Quizlet and memorize flashcards containing terms like Variable refrigerant flow systems use:, VRF systems are commercial systems. The outdoor units are normally designed ...



Need DC barrel power specs for Ring Stickup Cam ...

The other ring indoor cameras use micro-USB connectors, and the supplies are +5v 2A maximum. I'm measuring a consistent power usage of an indoor ...

How to Convert Main Supply Connection Of Air Conditioner From Outdoor

How to Convert Main Supply Connection Of Air Conditioner From Outdoor to Indoor If Main Supply Is In Fully4world 708K subscribers 1.8K



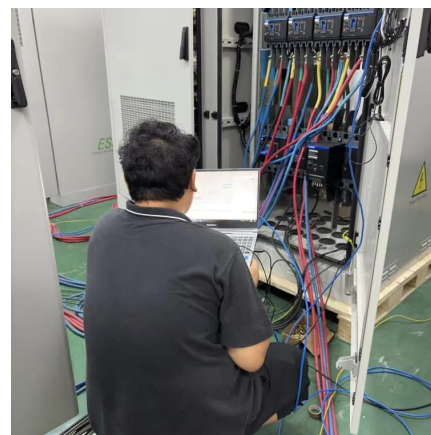


Mini Split Wiring Guide: Electrical Requirements and Wiring Diagram

Learn about mini-split wiring and electrical requirements. Get answers to questions about breaker sizes, wiring types, and power needs for efficient installation.

Ins and Outs of VRF System Wiring

Typically, the outdoor units in a VRF system are connected to each other and to the indoor units through a series of electrical wires. The wiring diagram provides a visual representation of the ...



What's the Difference Between Indoor and Outdoor ...

Choosing between an indoor and an outdoor LED power supply involves considering environmental resilience, thermal management, construction ...

Indoor/Outdoor Power Adapter - Ring

Looking for even more versatility? Add dual power to your Stick Up Cam Battery with a weather-resistant adapter, so you can plug in your device for non-stop ...



Indoor and Outdoor Power Strips: What You Need to Know?

Discover the key differences between indoor and outdoor power strips, and learn which one suits your environment for safe and efficient power management. Let's dive into the ...



Mini Split Wiring Guide: Electrical Requirements and ...

Learn about mini-split wiring and electrical requirements. Get answers to questions about breaker sizes, wiring types, and power needs for ...



Bringing The Indoors Out: The Ultimate Guide to Outdoor Power ...

In the sections below, we will discuss common outdoor power solution features, current market trends, common outdoor power applications, and - most importantly - offer tips on how to ...





Connection for Power

If I cut the power wire from the USB connection and connect it to electrical outlet would that be an issue for the camera. No outlet where I want ...

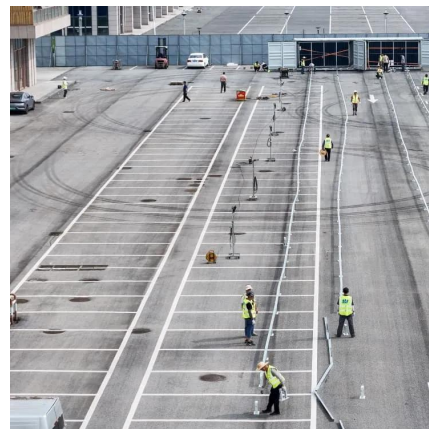


Best Outdoor Extension Cords: Top-rated Picks for ...

For the best outdoor extension cords, look for durable, weather-resistant options with multiple outlets. Quality and safety are top priorities ...

Ins and Outs of VRF System Wiring

Typically, the outdoor units in a VRF system are connected to each other and to the indoor units through a series of electrical wires. The wiring diagram ...



Split ac indoor outdoor wiring air conditioner , split ac wiring

Connects up to 5 indoor units to a single power supply outdoor unit. Installs a complete air conditioning project system to multiple zone interior spaces with no need for Circuit Diagram ...



Indoor and outdoor unit communication via signal from a power line

An air conditioning system is arranged to use a power line for communication. The air conditioning system includes one or more indoor units, one or more outdoor units, and a system controller ...



CEILING CASSETTE INSTALLATION MANUAL

NOTE: The indoor unit is powered from the outdoor unit, depending on local code, a disconnect switch may need to be installed to a power supply circuit. Secure interconnecting wires to the ...

Guide to Installing Outdoor Electrical Outlets

Summary So, if you're looking to extend the convenience and functionality of your indoor living space to the great outdoors, an outdoor electrical outlet is definitely your best bet. ...





Using indoor only power adapter outside

The unit came with a 12V1A power adapter which says Indoor Use Only on it. At the same time, the instructions say that the unit should be powered using an outlet that's wired ...

Split system outdoor unit power supply

For those air conditioners that still use a 3-pin plug and socket on the indoor unit for the power supply, an isolator must be installed adjacent to the outdoor unit containing the ...



Contact Us

For catalog requests, pricing, or partnerships, please visit:
<https://www.talbert.co.za>