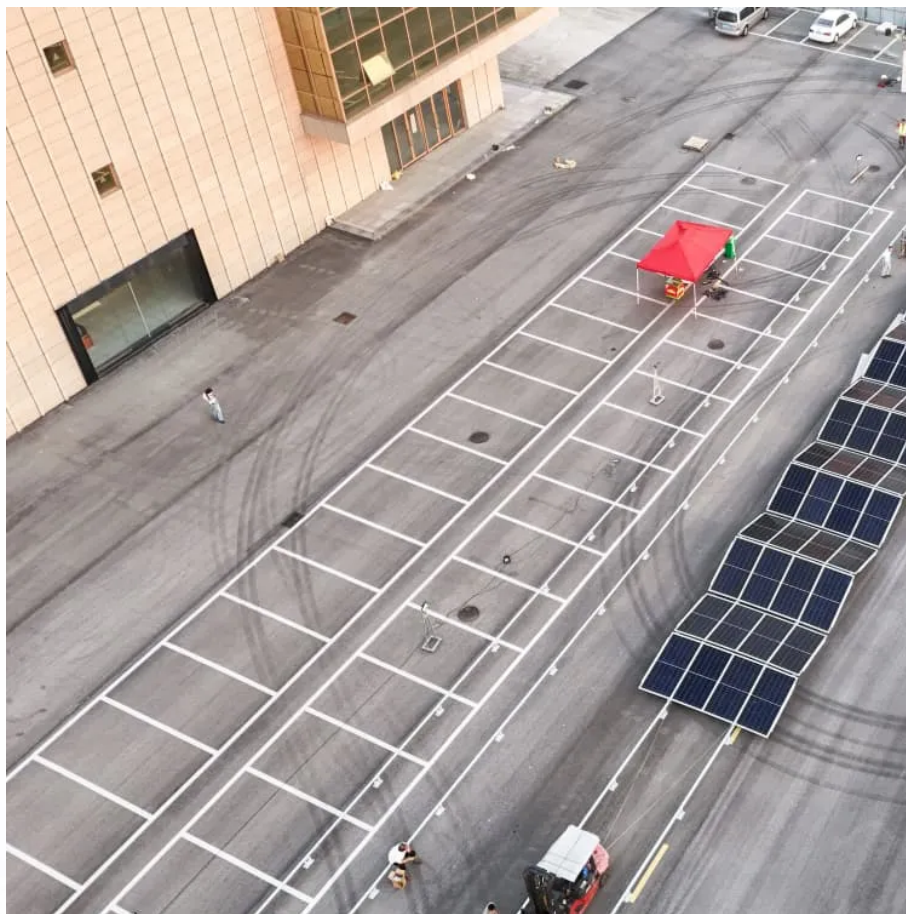


Omnik inverter voltage range





Overview

Omnik New Energy Solar Inverter Technical Data Omniksol-1.0k-TL/Omniksol-1.5k-TL/Omniksol-2.0k-TL Max. DC voltage [V] 500 MPPT DC voltage Range [V] 120 - 450 Turn off DC voltage [V] 120 Max. DC Current [A] 18 DC-Connection MC4 Number of MPP trackers 1 Turn on Power [W] 10 Output (AC) Max.

What are the characteristics of Omnik inverter?

Excellent Heat Elimination (Sample) Major Characteristics Omnik inverter has following characteristics which make Omnik inverter “High Efficiency, High Reliability, High Cost Effective Ratio” Wide DC input voltage and current ranges, enables more PV panels connected. Wide MPP voltage range ensure high yield under various weather conditions.

How many Omnik inverters are there?

1. Notes on this manual Scope of Validation The main purpose of this User’s Manual is to provide instructions and detailed procedures for installing, operating, maintaining, and troubleshooting the following four series of Omnik Inverters: Omniksol-1k/1.5k-TL2-M Omniksol-2k/2.5k/3k-TL3-S Omniksol-3k/3.68k/4k-TL3 .

Can Omnik inverter be used for grid balance?

In addition, the user can press the function key to illuminate the LCD screen. Omnik inverter is not an aligned measuring instrument for current, voltage or power consumption. A slight deviation of a few percent points is intrinsic to the system; the results from the inverter cannot be used for grid balance calculations.

What are the 5 types of Omnik new energy solar inverters?

Notes on this manual 1.1 Scope of Validation The main purpose of this User’s Manual is to provide instructions and detailed procedures for installing, operating, maintaining, and troubleshooting the following five types of Omnik New Energy-Solar Inverters: Omniksol-1k-TL2 Omniksol-1.5k-TL2 Omniksol-2k-TL2 .



Where should Omnik inverter be installed?

Omnik inverter is designed for indoors and outdoors installation, Omnik suggests to install the inverter in basement or garage where there's no directly sunlight or rain. Do not install in rooms where people live or where the prolonged presence of people or animals is expected because of the noise that the inverter makes during operation.

What type of wire should I use for Omnik inverter?

Page 26 NOTICE Use 16-12AWG (1.5-4mm) copper wire for all AC wiring connections to Omnik inverter. Use only solid wire or stranded wire.



Omnik inverter voltage range



User Manual

Omnik inverter is not an aligned measuring instrument for current, voltage or power consumption. A slight deviation of a few percent points is intrinsic to the system; the results from the inverter ...

[App] [Pro] Omnik

Omnik for Homey Introducing the Omnik app for Homey, offering support for Omnik solar inverters! This new app is designed to replace the now ...



[Omnik New Energy Omniksol-5k-TL2-3P User Manual](#)

Effective Shield For DC/AC/Communication Connections Major Characteristics Omnik inverter has following characteristics which make Omnik inverter "High Efficiency, High Reliability, High ...

Omniksol 1PH 5 6 TL3

o Wide MPP voltage range ensure high yield under various weather conditions. o High MPP tracking accuracy, ensure the minimum power

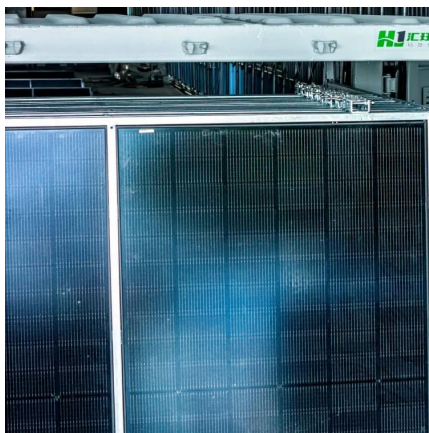


loses during converting.



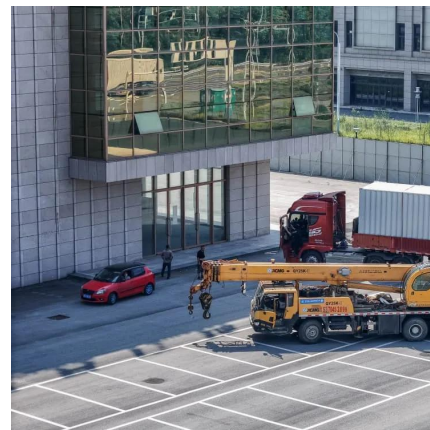
The inverter gives an error. List of errors on the ...

Check the open PV voltage to see if it's greater than or too close to 1000VDC (for specific models). If PV voltage is less than 1000VDC and the problem occurs, ...



[Omnik Omniksol-1.5k-TL , SolarTraders](#)

Featuring an input voltage range of 500.0-500.0 V, this inverter is ideal for projects with diverse solar panel setups. Choose Omnik with its Omniksol-1.5k-TL for your solar energy needs and ...



Omnik , Omniksol-3.0k-TL2 , Solar Inverter Datasheet ...

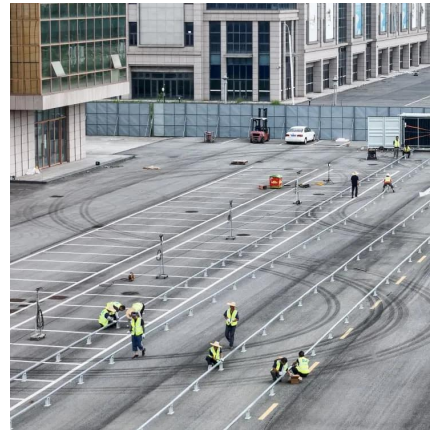
Omnik New Energy Co., Ltd. Solar Inverter Series Omniksol-3.0k-TL2. Detailed profile including pictures, certification details and manufacturer PDF





Omniksol-2.0k-TL Photon Efficiency up to 3kW No.1 in the ...

Omnik New Energy Solar Inverter Technical Data
Omniksol-1.0k-TL/Omniksol-1.5k-TL/Omniksol-2.0k-TL Max. DC voltage [V] 500
MPPT DC voltage Range [V] 120 - 450 Turn off DC voltage ...

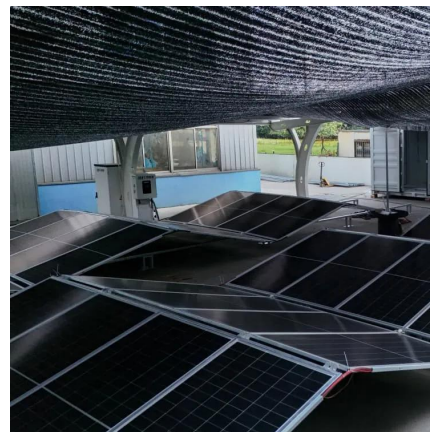


[Omnik New Energy Omniksol-5k-TL2-TH User Manual](#)

Page 74 1 rrect The Installation (Remove DC Voltage Is Too High Due Panels) PV Volt High To Wrong Installation 2.Re-Flash Software 3.Replace Part Or Inverter Grid Voltage Detection ...

[OMNIK OMNIKSOL-2K-TL3-S INVERTER USER ...](#)

This inverter will be directly connected with HIGH VOLTAGE power generation device; the installation must be performed by qualified personnel only in ...



[Omnik , Omniksol-4-6K-TL2-TH , Solar Inverter ...](#)

Omnik New Energy Co., Ltd. Solar Inverter Series Omniksol-4-6K-TL2-TH. Detailed profile including pictures, certification details and manufacturer PDF



OMNIK OMNIKSOL-2.5K-TL2-S USER MANUAL Pdf Download

Effective Shield For DC/AC/Communication Connections 3.2 Major Characteristics Omnik inverter has following characteristics which make Omnik inverter "High Efficiency, High Reliability, High ...



User Manual:

This document provides a user manual for three solar inverters produced by Omnik New Energy Co., Ltd. It contains instructions on safety, installation, operation, ...

[Omnik , Omniksol-1k/1.5k-TL-M , Solar Inverter ...](#)

Omnik New Energy Co., Ltd. Solar Inverter Series Omniksol-1k/1.5k-TL-M. Detailed profile including pictures, certification details and manufacturer PDF





Omnik , Omniksol-1k/1.5k-TL-M , Solar Inverter Datasheet , ENF Inverter

Omnik New Energy Co., Ltd. Solar Inverter Series Omniksol-1k/1.5k-TL-M. Detailed profile including pictures, certification details and manufacturer PDF

[OMNIK OMNIKSOL-1K-TL2 USER MANUAL Pdf ...](#)

NOTICE Omnik inverter is not an aligned measuring instrument for current, voltage or power consumption. A slight deviation of a few percent points is ...



The inverter gives an error. List of errors on the inverter Omnik

Check the open PV voltage to see if it's greater than or too close to 1000VDC (for specific models). If PV voltage is less than 1000VDC and the problem occurs, call local service.

Omniksol 1PH 5 6 TL3

o Wide MPP voltage range ensure high yield under various weather conditions. o High MPP tracking accuracy, ensure the minimum power losses during ...



User Manual:

This document provides a user manual for three solar inverters produced by Omnik New Energy Co., Ltd. It contains instructions on safety, ...



[OMNIK OMNIK SOL-1K-TL USER MANUAL Pdf ...](#)

7.4 Instructions of Safety Standard selection when power-up 1) Attentions before the operation: Only perform this operation when the voltage value displayed ...



Omniksol-3k-5k Data Sheet en , PDF , Power Inverter ...

This document provides technical specifications for three solar inverters from Omnik New Energy. The inverters have high maximum efficiencies between ...





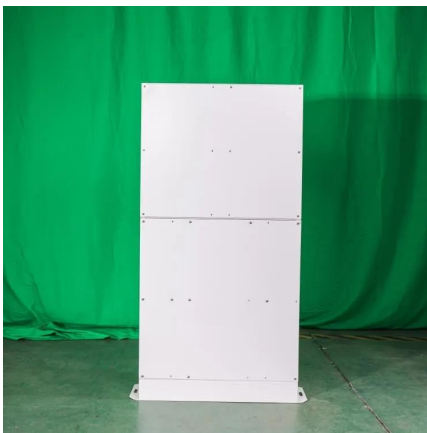
[Omnik-solar-inverter-manufacturer-catalog , PDF](#)

Omnik New Energy Co., Ltd. is a Sino-German joint venture that specializes in developing, manufacturing, and marketing photovoltaic inverters. The ...



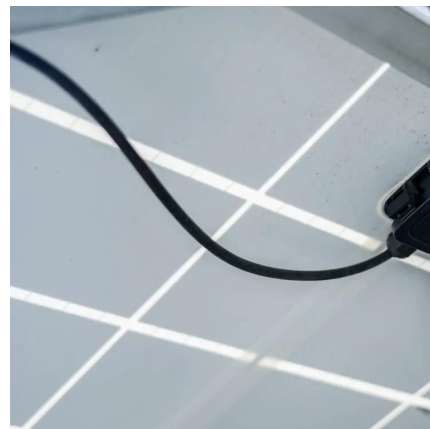
[Omnik , Omniskol-M248 , Solar Inverter Datasheet](#)

Omnik New Energy Co., Ltd. Solar Inverter Series Omniskol-M248. Detailed profile including pictures, certification details and manufacturer PDF



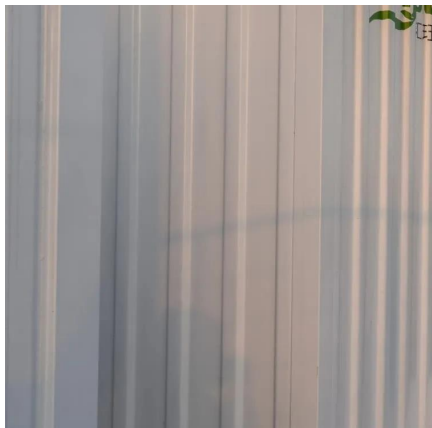
User Manual

Wide DC input voltage and current range, enables more PV panels connected. Wide MPP voltage range ensure high yield under various weather conditions. High MPP tracking accuracy, ...



Omnik , Omniskol-3-4k-TL3 , Solar Inverter Datasheet ...

Omnik New Energy Co., Ltd. Solar Inverter Series Omniskol-3-4k-TL3. Detailed profile including pictures, certification details and manufacturer PDF



OMNIK OMNIKSOL-2K-TL3-S INVERTER USER MANUAL , ManualsLib

This inverter will be directly connected with HIGH VOLTAGE power generation device; the installation must be performed by qualified personnel only in compliance with national and ...

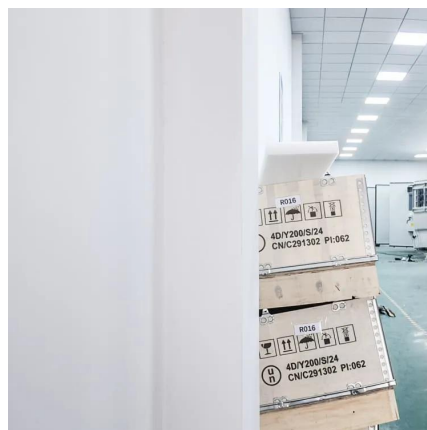


[1905-UserManual_OMNIK_3K4K5K-TL2_EN_V1.1_20140511...](#)

Omnik inverter is not an aligned measuring instrument for current, voltage or power consumption. A slight deviation of a few percent points is intrinsic to the system; the results from the inverter ...

OMNIK OMNIKSOL-1K-TL USER MANUAL Pdf Download , ManualsLib

7.4 Instructions of Safety Standard selection when power-up 1) Attentions before the operation: Only perform this operation when the voltage value displayed on Omnik inverter's LCD falls ...





Omnik New Energy Co., Ltd. Omniksol-10k-TL3 User Manual

A minimum available voltage of 220Vdc and a DC power of >30Wdc is required before the inverter starts feeding power to the grid. AC side: Turn on the AC circuit break and the display module ...

OMNIK OMNIKSOL-1K-TL2 USER MANUAL Pdf Download , ManualsLib

NOTICE Omnik inverter is not an aligned measuring instrument for current, voltage or power consumption. A slight deviation of a few percent points is intrinsic to the system; the results ...



Contact Us

For catalog requests, pricing, or partnerships, please visit:
<https://www.talbert.co.za>