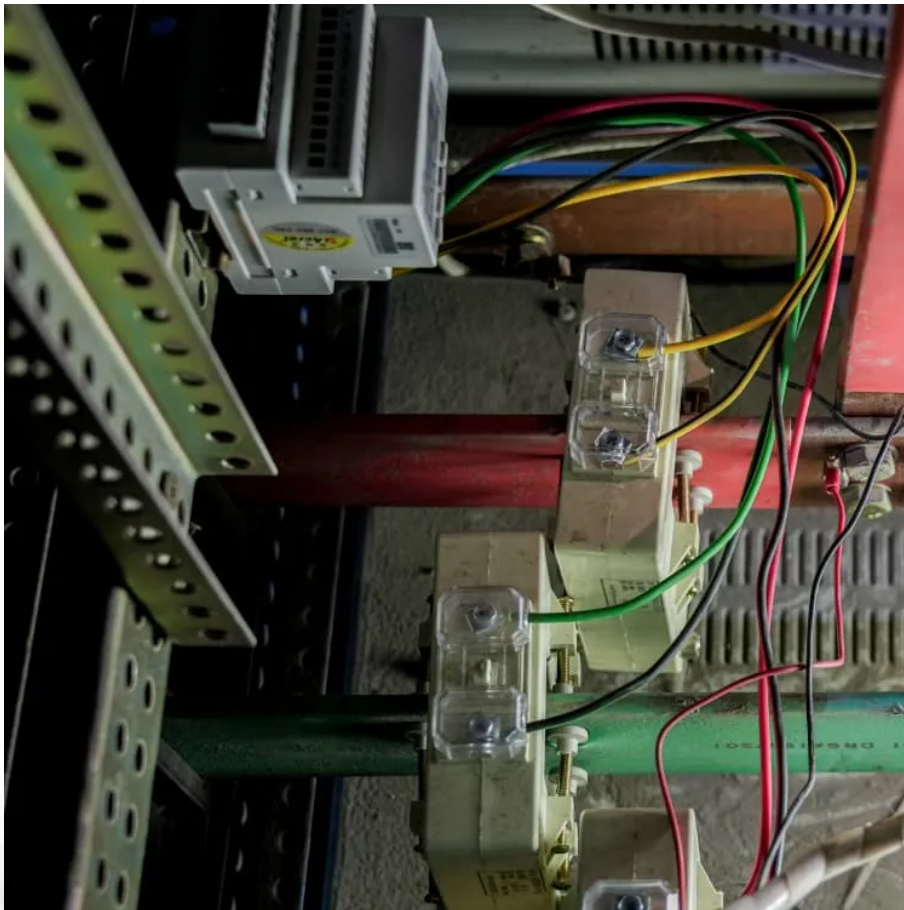


Nature Conservation Communication Base Station EMS





Overview

What is an em comm station?

The author's station in a typical Em- Comm configuration. A computer and sound interface are needed when using digital modes. Amateur radio operators usually refer to their communications equipment as their "station," whether it is a base station at home, mobile station in a vehicle or portable station when on foot.

What is an emergency communications station (EmComm)?

Putting together a field, or emergency communications, station (EmComm) is similar to setting up a home station. Both types of stations share many common elements: radios that cover all amateur bands, antenna systems appropriate for those bands with some type of supporting structure, and a source of electricity for power.

What type of feed line do em-COM stations use?

Feed lines used in Em- Comm stations are usually a "one-size-fits- most" variety; coax such as RG-8X or LMR-240 are good choices for portability because of their smaller diameter and increased flexibility.

What equipment do I need for a field or EMCOM station?

Peripheral equipment, such as antenna tuners (sometimes required to "match" the output of the radio to the impedance of the antenna system), may be necessary in a field or EmComm station but should be kept to a minimum, both in size and number, while still maintaining the station's capabilities.

Do hams really need an EmComm station?

Many hams find the EmComm station is all they ever need and use it at home or in the field as their primary equipment. These hams quickly become very efficient and effective operators in any situation or environment in which they



might find themselves—but their proficiency comes through practice.

How can EMS improve communication skills?

Interpersonal communication is often challenging in EMS. Adopting best practices can improve communication capabilities significantly. • Confidentiality, patient refusals, and falsification of records are all-important legal concepts that an EMT must consider when documenting a call.



Nature Conservation Communication Base Station EMS

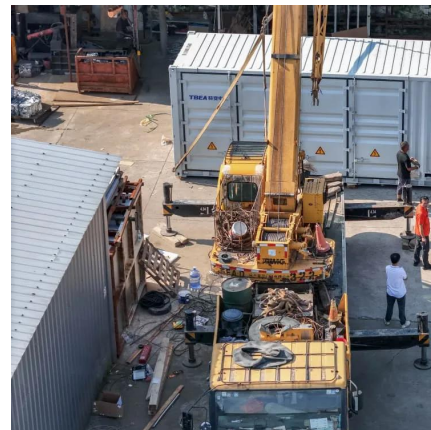


Portable Base Station Provides Wireless Communication in The ...

The Forestry Bureau is pondering a wireless communication solution for firefighters or other first responders to connect wirelessly in thickly-wooded areas during the emergency events in ...

Environmental Management

The Environmental Management System (EMS) promotes sustained mission readiness through actively identifying and implementing opportunities for efficient resource use.



[Masterplan Ems 2050: nature conservation station](#)

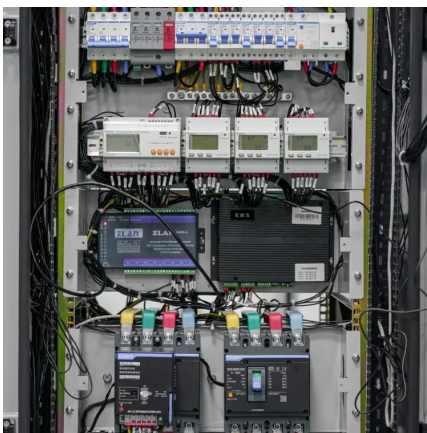
The emphasis lies on documenting species and habitats, planning/executing/monitoring care and development measures on state land, economic management of state land, general nature ...

[chapter 5 post test Flashcards , Quizlet](#)

Study with Quizlet and memorize flashcards containing terms like Upon your arrival at the patient's side, with what style of question is it



BEST to start your interview?, How should the ...

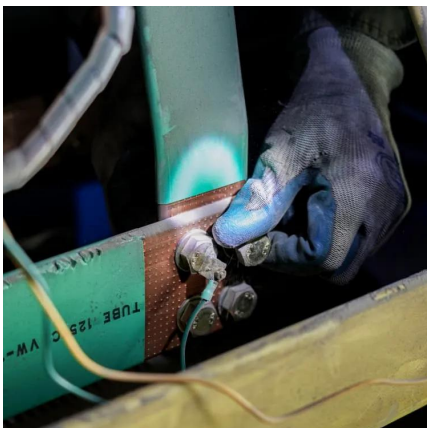


Wildlife and Biodiversity: A Disappearing Act by Cell Towers on ...

Animals, birds and insects use electromagnetic signals for communication and basic functions of survival. They are also inherently more sensitive to RFR than humans. That ...

[Chapter 5: Communication Flashcards, Quizlet](#)

Study with Quizlet and memorize flashcards containing terms like base station, Where should base stations be located?, What are components of an Emergency ...



[ENVIRONMENTAL MANAGEMENT SYSTEMS \(EMS\)](#)

An Environmental Management System (EMS) is a structured framework for managing an organisation's significant environmental impacts. The latter vary between organisations, but ...



CAREpoint

CAREpoint for Hospitals Consolidation of all incoming EMS communications helps to improve treatment times, enhance patient care, and facilitate better team communications between

...



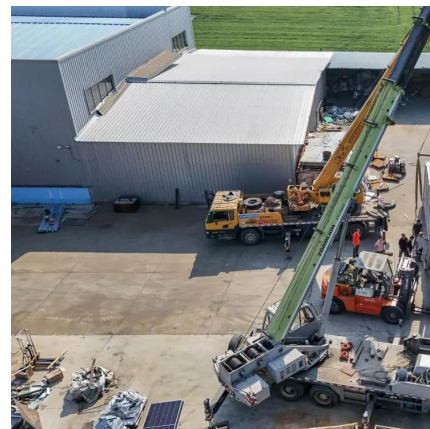
[Chapter 5 EMS Communications](#) [Flashcards , Quizlet](#)

Study with Quizlet and memorize flashcards containing terms like base station, biotelemetry, cellular telephones and more.

C8: Communications [5/5/03]

For full definition see Policy A3: Initiation of ALS or BLS Care/Scopes of Practice. Other than a means of voice communication, base station contact over the UHF radio or cellular phone line

...



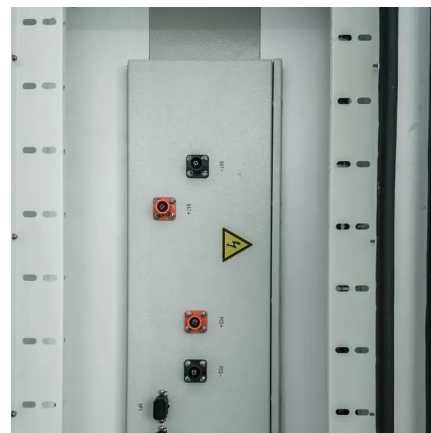
Microsoft Word

Sometimes, the base station is operated in the duplex mode, however, in EMS the portable or mobile radio is often operated in the duplex mode, and the base station at the ...



Comms on the Go: Emergency Field Communications

A complete station, ready for EmComm or field communications. The station has proven to provide local, regional, national and global communications capabilities.



Ambulance Radios: Types And Uses . ShunAuto

Base stations In the context of emergency medical services (EMS), base stations play a crucial role in facilitating communication between different ...

Statewide EMS Operations & Communications Resource ...

This Emergency Medical Services (EMS) Operations and Communications Resource Manual has been developed by the State of California Emergency Medical Services Authority (EMS ...





Microsoft Word

Communication Technologies and Emergency Medical Services (EMS): Journal articles, many of which examine communications technologies and systems used in ...

Emergency Care, Fourteenth Edition, Chapter 17, ...

In some EMS systems, simple standard communications are transmitted by pushing a button on a mobile data terminal (MDT) mounted in the ambulance. Carry portable radio whenever you ...



Comms on the Go: Emergency Field Communications

A complete station, ready for EmComm or field communications. The station has proven to provide local, regional, national and global ...

Ch. 5 Notes.pdf

Chapter 5 - Communication EMS
Communications System Components of an
Emergency Communication System Base station
Serves as a dispatch.



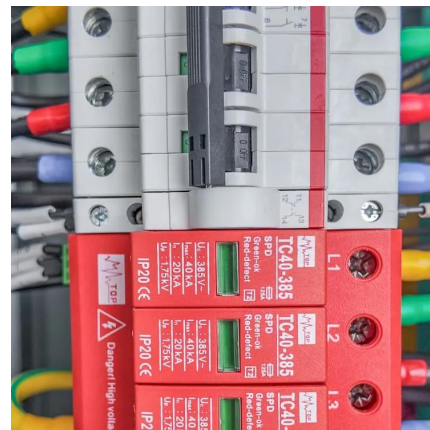
Ch. 5 Notes.pdf

Chapter 5 - Communication EMS
Communications System Components of an
Emergency Communication System Base station
Serves ...



[EMS System Communications - georgiaemsacademy](#)

The Powerful Base Station Radio The base station radio generally sites on a desk and is programmed to transmit with increased power to overcome any obstacles or distance ...



Wildlife and Biodiversity: A Disappearing Act by Cell ...

Animals, birds and insects use electromagnetic signals for communication and basic functions of survival. They are also inherently more ...



Effective Communication in EMS Systems: A Comprehensive Guide

Preview text Comprehensive Guide to Communication in EMS Systems Effective communication is a crucial aspect of Emergency Medical Services (EMS), ensuring the accurate and timely ...



[Chapter 5 test Flashcards , Quizlet](#)

Study with Quizlet and memorize flashcards containing terms like A base station is affixed to an EMS vehicle., Wireless Communications include radios and cell phones, the Department of ...

[Chapter Five: Communication Flashcards , Quizlet](#)

The role of dispatch in an EMS communications system is to obtain information about the nature of the emergency, direct the appropriate emergency service (s) to the scene, and: Provide the ...



EMS

Study with Quizlet and memorize flashcards containing terms like EMS base station, Repeaters are used within an EMS communications system to allow, Cell phones within an EMS system ...



Contact Us

For catalog requests, pricing, or partnerships, please visit:
<https://www.talbert.co.za>