

# **Maximum allowable recharge current of battery cabinet**





## Overview

---

What is the maximum battery charging current?

What is the battery maximum charging current The maximum battery charging current refers to the minimum current value that the batteries can charge under maximum conditions. In general, the standard charging current is 0.1C or 0.3C-0.4C. For example, a 1000mAh battery has a standard charging current of 100mA and a maximum of 400mA1.

What is the maximum charging current a lithium battery can accept?

The maximum charging current that lithium batteries can accept is usually 1C or even smaller. Lithium battery charging current is generally marked on the charger. You see, lithium batteries usually use the charging mode of constant current and then constant voltage.

What happens if you overestimate battery charging capacity?

If you over-estimate the required charging capacity, the charger may deliver too much current. Excessive charging current can cause battery overheating, accelerated water loss in flooded type batteries, and damaged batteries. Many battery manufacturers recommend a maximum charging rate of 20% of the amp hour capacity of the battery.

What is a battery charging cabinet?

A battery charging cabinet provides a safe and efficient solution for managing these risks by offering controlled environments for both charging and storage. A lithium battery cabinet is designed to protect batteries from overheating, prevent thermal runaway, and contain any potential fires.

What is max charge current?

Max charge current is also designated as the Maximum Charging Current. It is defined as the maximum charging current that a battery can handle during its charging without causing it any damage. This article will explain the role and



effects of the max charge current. Generally, the Maximum Charging current of the batteries is 0.1C or 0.5C to 1C.

How to choose a battery charging cabinet?

Opt for a fireproof battery charging cabinet with thermal insulation and fire-resistant materials to enhance safety. Ensure that the battery storage cabinets meet national and international safety standards for handling hazardous materials.



## Maximum allowable recharge current of battery cabinet

---



### 1926.441

Batteries of the unsealed type shall be located in enclosures with outside vents or in well ventilated rooms and shall be arranged so as to prevent the escape of fumes, gases, or ...

### Understanding Maximum Amperage and Charging ...

Know the maximum amperage for LiFePO4 batteries and answer some common questions about charging currents and C rates. Let's dive into ...



### Maximum charging current

The maximum battery charging current refers to the minimum current value that the batteries can charge under maximum conditions. In ...

### batteries

I know the exact values depend on the specific battery used, but is there a general rule for the maximum charge current (as a function of the





battery capacity) for each of the ...

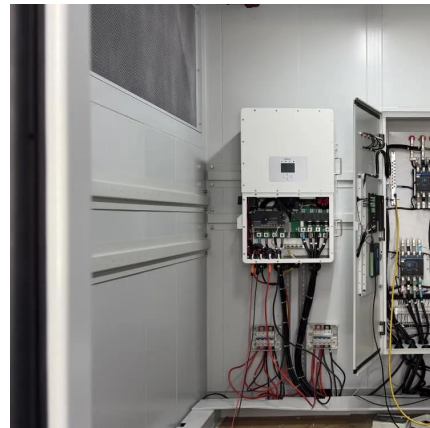


### Stationary Storage Battery Systems . UpCodes

Stationary storage battery systems that have the potential to release toxic and highly toxic gas during charging, discharging and normal use conditions shall comply with Section 447.

### Maintaining Compliance in the VRLA Battery Room

Learn the requirements for VRLA batteries and how to be compliant with current regulation. Also learn the various rack compliance requirements and best practices including IBC, UBC, NEBS, ...



### **Analysis of Communication Protocol Standard for Conductive ...**

able charging current is "0825"=191.5A, and the nominal total energy of power battery is "0294"=66kW/h-1. Moreover, the maximum allowable total charging voltage is "1182"=448.2V, ...



## [Battery Pack Calculator , Good Calculators](#)

Here's a useful battery pack calculator for calculating the parameters of battery packs, including lithium-ion batteries. Use it to know the voltage, capacity, energy, and maximum discharge ...

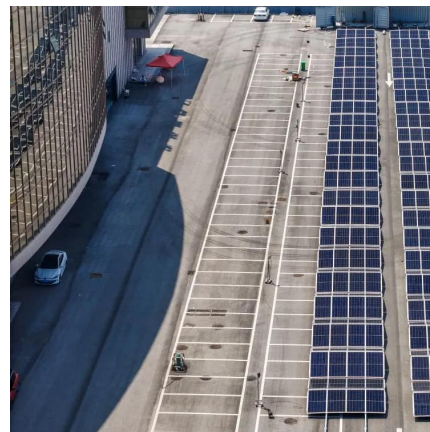


## **Hybrid charging strategy with adaptive current control of lithium ...**

The maximum rated capacity of the battery is 3200 mA h, and the maximum allowable charging current is set to 1 C in the test (C means the rate, which can define the ...

## **Optimization of multi-stage constant current charging pattern based ...**

The rated capacity of the battery is 3150 mAh, and the maximum allowable charging current is 2 C (C means the rate, which can define the current corresponding to complete ...



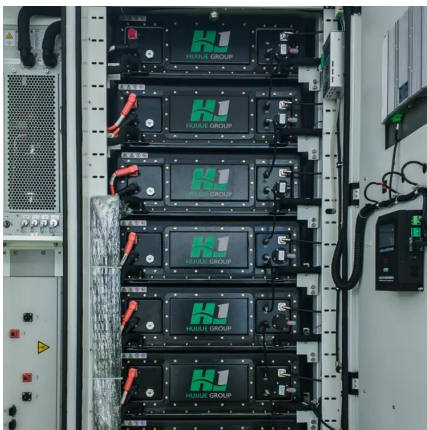
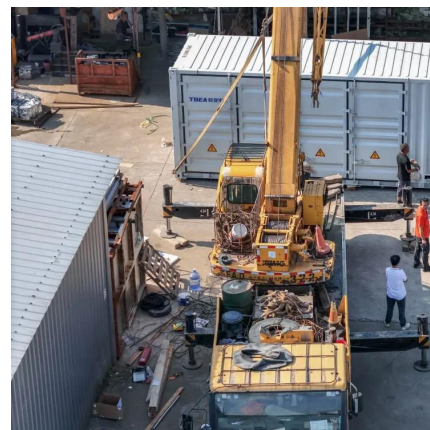
## [ESS-GRID Cabinet Brochure EN-250106](#)

Integrated Turnkey C&I ESS Solution The ESS-GRID Cabinet series are outdoor battery cabinets for small-scale commercial and industrial energy storage, with four different capacity options ...



## What is the maximum charge and discharge current a BMS can ...

What is the maximum charge and discharge current a BMS can handle? 1. Charge Current Limit: - The BMS sets a maximum allowable charging current for the battery pack. - This limit prevents ...



## Maximum Charge Rate

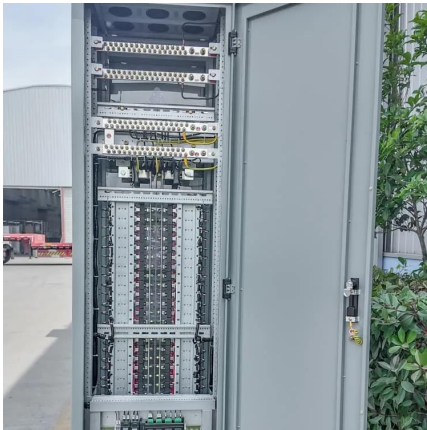
For proper controller function, it is a good idea that the maximum charge current is no more than the 10 hour rate for open batteries such as these. The maximum charging ...

## [What amp should I charge my LiFePO4 battery?](#)

Figuring out what current you should charge your LiFePO4 battery is easy. There are two factors to consider: The recommended charge current of the cells The maximum ...





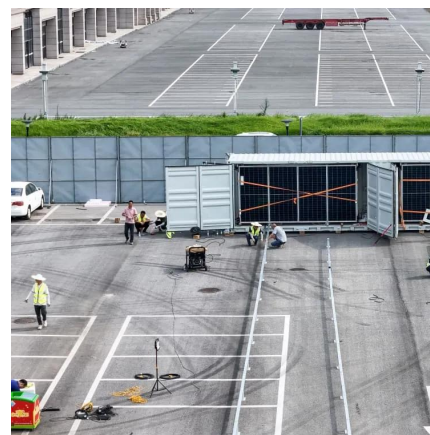


### The role and impact of max charge current

It is defined as the maximum charging current that a battery can handle during its charging without causing it any damage. This article will explain the role and effects of the max ...

### **Specifications for 480 V Systems**

End of discharge voltage (full load) (VDC) 384  
Battery current at full load and nominal battery voltage (A) 45 66 88 110  
Battery current at full load and minimum battery voltage (A) 54 81 108  
...



### **Anode potential and allowable maximum charging current of the battery**

During charging, lithium-ion (Li-ion) batteries can undergo lithium plating if the charging current is too high. This process will reduce battery capacity and affect the safety performance of

### Battery Room Ventilation and Safety

Excessive charging current can cause battery overheating, accelerated water loss in flooded type batteries, and damaged batteries. Many battery manufacturers recommend a maximum  
...





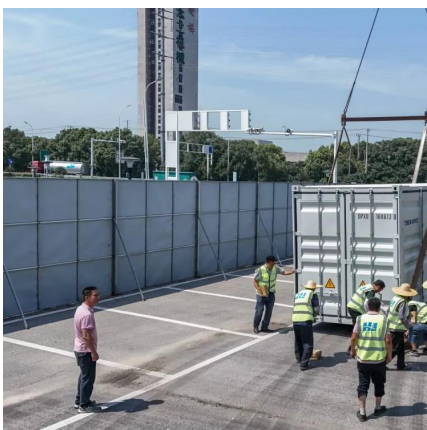
## Specifications

All wiring must comply with all applicable national and/or electrical codes. The maximum allowable cable size is 185 mm<sup>2</sup> (IEC) / 350 kcmil (UL). Failure to follow these instructions will result in ...



## Power/Current Limit Feature for Powerwall 3

Power/Current Limit Feature for Powerwall 3  
Feature Overview The default maximum power/current output for Powerwall 3 is 11.5 kW / 48 A. Beginning ...



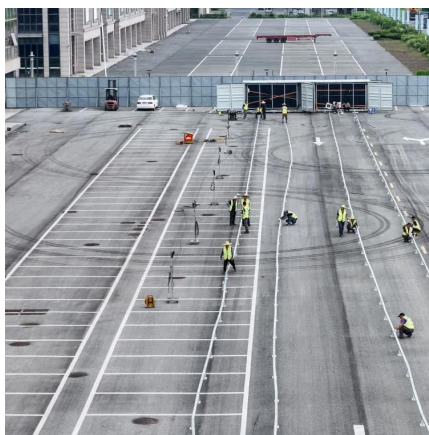
## Complying With Fire Codes Governing Lithium-ion Battery Use

System -- The Vertiv HPL lithium-ion battery cabinet has successfully completed UL 9540A testing. The system provides safe, reliable and cost-effective high-power energy with improved ...



## Understanding the Factors that Determine Maximum EV Charging ...

The key difference between Level 2 and DC Fast (Level 3) EV charging stations lies in how they deliver power to the electric vehicle and how that power interacts with the car's onboard ...



## The Ultimate Guide to Battery Charging Cabinets: ...

Discover the importance of battery charging cabinets for safe lithium-ion battery storage. Learn about key features, benefits, and best practices for workplace ...

## The Ultimate Guide to Battery Charging Cabinets: Safe Storage ...

Discover the importance of battery charging cabinets for safe lithium-ion battery storage. Learn about key features, benefits, and best practices for workplace safety.



## Maximum charging current

The maximum battery charging current refers to the minimum current value that the batteries can charge under maximum conditions. In general, the standard charging current is ...



### **46 CFR Part 111 Subpart 111.15 -**

A large battery installation is one connected to a battery charger that has an output of more than 2 kW computed from the highest possible charging current and the rated voltage of the battery ...



## **Contact Us**

For catalog requests, pricing, or partnerships, please visit:  
<https://www.talbert.co.za>