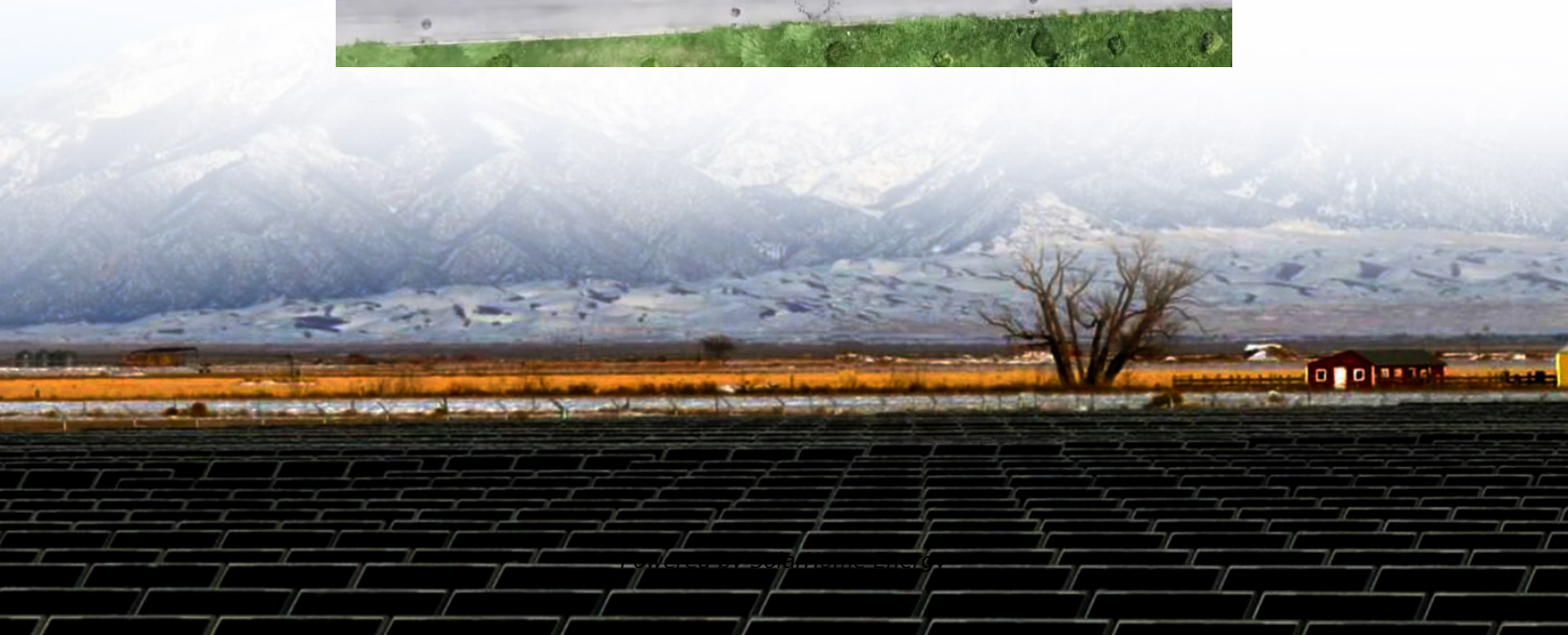
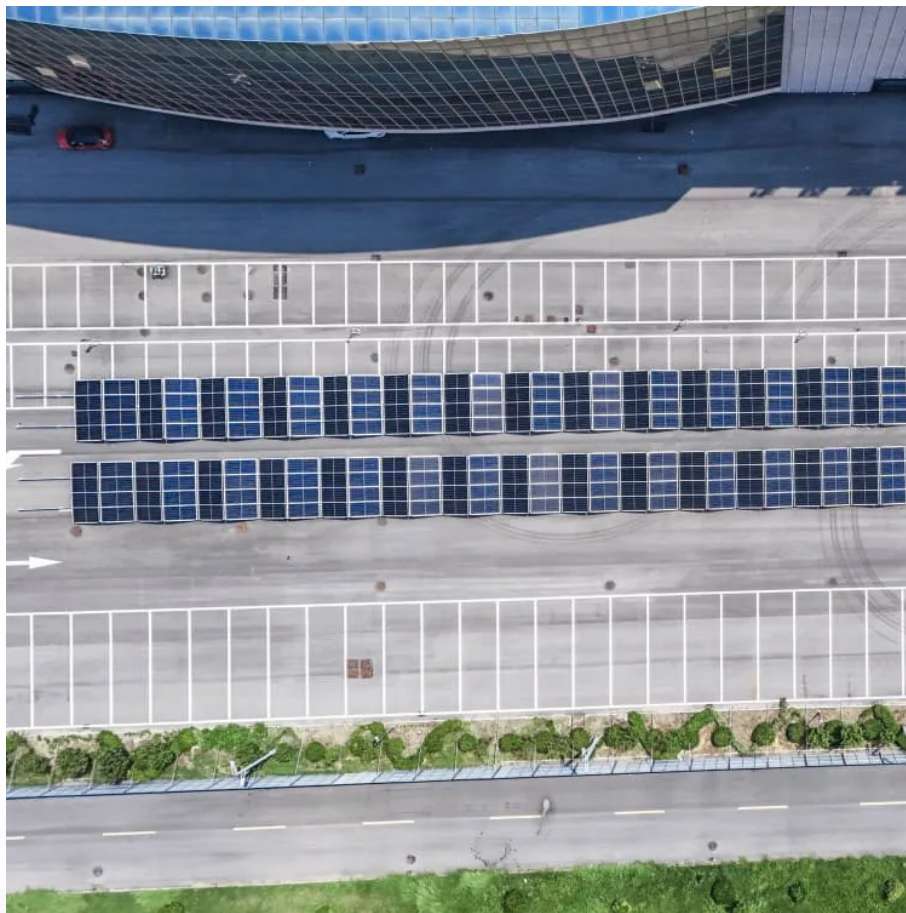


Lithium battery pack voltage requirement error





Overview

This fault code may be the result of a wiring error on the cell taps (look for “Open wire faults”), a wiring error on the total pack voltage sensor, a cell population setting error, or an internal BMS error. Why is my lithium battery not charging?

If the battery detects abnormalities, it may enter protection mode and refuse to charge. This situation often occurs if the battery has become too hot or cold or if it has been over-discharged. Voltage Drops Below Safe Level Lithium batteries automatically shut down if voltage drops below 2.5V per cell (use a multimeter to check).

Can a lithium ion battery be overcharged?

For most lithium-ion batteries, the charging voltage peaks at 4.2V, while the cutoff voltage during discharge is typically 3.0V. Exceeding these limits can lead to overheating, capacity loss, or even thermal runaway. To avoid overcharging, use chargers specifically designed for your battery type.

How do I know if my lithium battery is bad?

Check lithium battery voltage when charging or using to avoid problems like overheating or shorter life. Use a battery management system (BMS) to keep it safe by controlling voltage, current, and heat. Always check your battery's normal voltage to match it with your devices.

What causes low voltage in a lithium battery?

Root cause 1: High self-discharge, which causes low voltage. Solution: Charge the bare lithium battery directly using the charger with over-voltage protection, but do not use universal charge. It could be quite dangerous. Root cause 2: Uneven current.

What voltage should a lithium ion battery be charged?

It prevents over-discharging and overcharging, both of which can degrade



battery performance and pose safety risks. For a 3.6V lithium-ion battery, the typical cutoff voltage is: 3.0V for discharge. 4.2V to 4.35V for full charge. Maintaining these voltage ratings ensures the longevity and reliability of the battery.

Can I use a lithium ion Charger if my battery is depleted?

Yes, but it depends on the condition. If the voltage exceeds 2.5V, use a Li-ion charger with a recovery mode. For severely depleted batteries (below 2.5V), specialized equipment like an RC balance charger may be needed. Always proceed with caution to avoid safety risks.



Lithium battery pack voltage requirement error



Lithium battery pack voltage error

Here's a useful battery pack calculator for calculating the parameters of battery packs, including lithium-ion batteries. Use it to know the voltage, capacity, energy, and maximum discharge

Lithium Battery for Robotics: Critical Requirements ...

By partnering with HIMAX, you gain access to high-performance lithium battery solutions that are purpose-built for robotics innovation. Power ...



How to Calculate Lithium-Ion Battery Pack Capacity & Runtime

Learn the simple steps to calculate a lithium-ion battery pack's capacity and runtime accurately in this comprehensive guide.

Lithium Ion Battery Not Charging? How to Fix & Revive

Many lithium batteries have built-in protection circuits to prevent overcharging, over-



discharging, and short circuits. If the battery detects ...



Lithium-ion Battery Packs

Inventus Power offers advanced, globally certified lithium-ion battery solutions like the PROformance and U1LiFe Series, emphasizing safety, innovation, and ...



Comprehensive Guide to Lithium Battery Cell Voltage During ...

Understand lithium battery cell voltage during charging and discharging, including safe ranges, cutoff limits, and how voltage impacts performance and safety.



Help!

What the charger is trying to tell you is that you "input" the wrong voltage relative to the battery you plugged in to charge. For example you told it 11.1 volts (3s) and plugged in a ...





Hidden Requirements for Custom Lithium-ion Battery Pack ...

Q3. What are the main certification requirements for custom lithium-ion battery packs? Custom lithium-ion battery packs typically require multiple certifications, including ...



Intelligent protection board for lithium battery Operation and

1 Overview The intelligent protection board of lithium battery is a management system specially designed for large-capacity series lithium battery packs. which has the functions of voltage ...

SSZT315 Technical article , TI

A key requirement of safety standards for lithium-based battery systems is that the cells should only operate within the specified voltage range provided by the cell manufacturer. This is ...



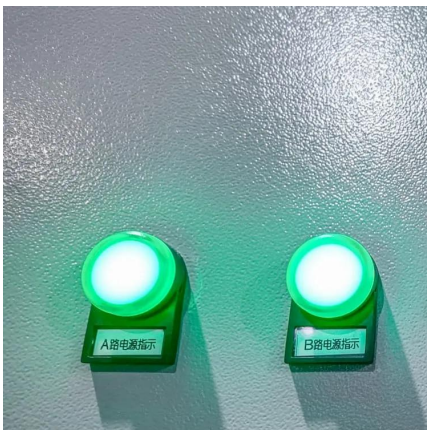
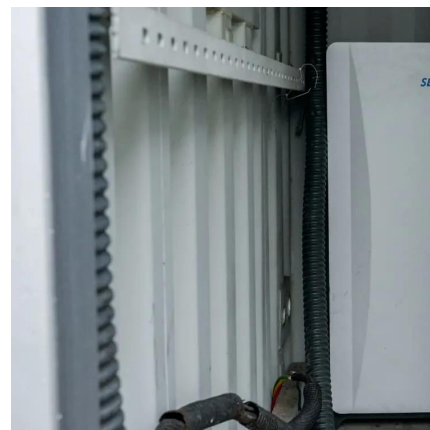
Comprehensive Guide to Lithium Battery Cell Voltage ...

Understand lithium battery cell voltage during charging and discharging, including safe ranges, cutoff limits, and how voltage impacts ...



How to Fix a Lithium Battery That Won't Charge: A ...

Troubleshooting a lithium battery that won't charge? Discover common causes and easy fixes, including charger issues, battery management system failures, and more.



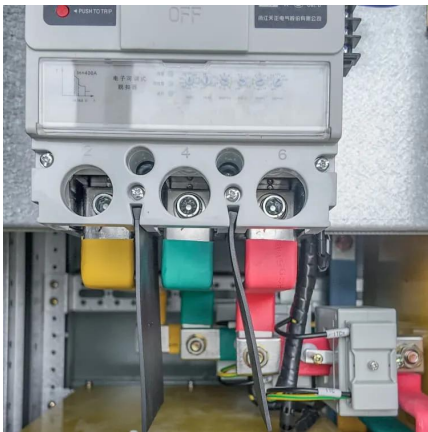
24v Lithium Battery Charging Voltage Requirements and Settings

Mastering 24V lithium battery charging voltage requirements is essential for maximizing performance, safety, and lifespan. As we've explored, precise voltage settings ...

Common Lithium-ion Battery Problems and How to ...

So in here in this post, we share with you some of the most commonly seen root causes to lithium-ion battery accident and their solutions.
...



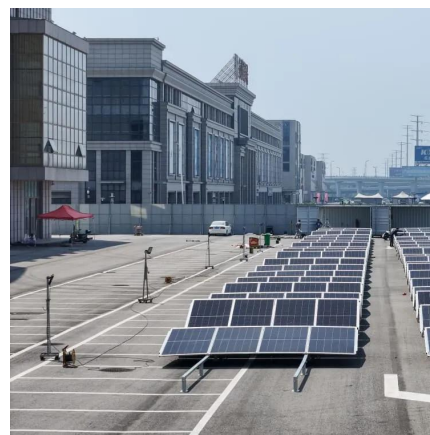


How to Choose Lithium Battery Solutions: Expert Guide for ...

The type of lithium battery required for industrial applications is determined by the specific requirements of the equipment being powered: device voltage, load-current, capacity ...

P0A03 - Pack Voltage Mismatch Error , Orion Li-Ion Battery ...

The text will show the total pack voltage and individual cell voltages at the time when this error was triggered. Review the data for clues about why the voltages are mismatched.



Common Lithium-ion Battery Problems and How to Fix Them

So in here in this post, we share with you some of the most commonly seen root causes to lithium-ion battery accident and their solutions. Hope our post help you with what ...

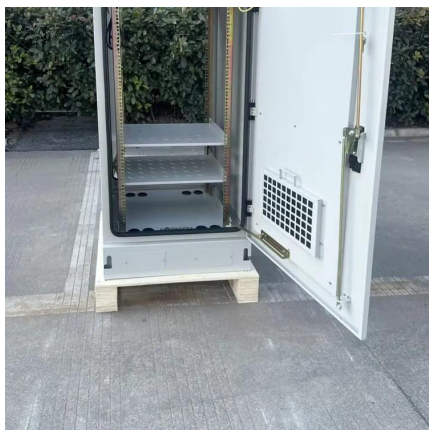
Lithium Battery Regulations and Standards in the US: ...

Guide to UL standards, CPSIA, Amazon requirements, lab testing, and certification for lithium battery products to the US.



Why Your Lithium Battery Pack Has No Voltage Output ...

Check terminal connections with a multimeter. Test individual cell voltages (look for cells below 2.5V). Inspect BMS error logs using diagnostic software. Perform a controlled recharge at 0.1C ...



[The Fundamentals of Battery/Module Pack Test](#)

Due to the complexity of battery testing there will likely be errors. Yes, Murphy's Law does apply. Tests will need to be re-run and there are no short-cuts to save the time that's been lost. ...



Lithium Ion Battery Not Charging? How to Fix & Revive

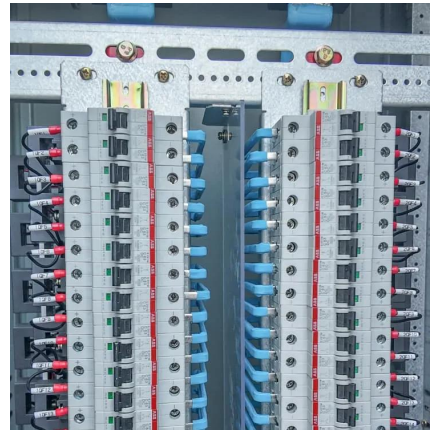
Many lithium batteries have built-in protection circuits to prevent overcharging, over-discharging, and short circuits. If the battery detects abnormalities, it may enter protection ...





[Learn about BMS and Battery Pack: Cell Voltage ...](#)

The BMS (battery management system) monitors the battery cells in various aspects and controls the status of the battery pack. See cell voltage ...

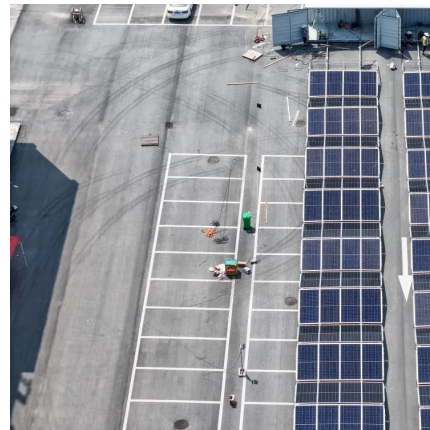


SSZT315 Technical article , TI

A key requirement of safety standards for lithium-based battery systems is that the cells should only operate within the specified voltage range provided by ...

FAA 'safety alert' warns airlines about the dangers of lithium

3 days ago· In a safety alert, Tuesday, the Federal Aviation Administration again warned airlines of the risk of lithium batteries carried onboard planes by passengers and crew members.



Critical review and functional safety of a battery

Abstract The battery management system (BMS) is the main safeguard of a battery system for electric propulsion and machine electrification. It is tasked to ensure reliable and safe ...



Common Issues With Lithium-Ion Batteries and How to Fix Them

From overheating to reduced lifespan, this guide covers common lithium-ion battery problems and provides practical solutions to fix them.



iMax B6 MANUL

Purposes to charge Lithium battery varies, 'fast' charge reduce the duration of charging, whereas 'store' state can control the final voltage of your battery, so as to store for a long time and ...

Lithium battery voltage consistency: Why has it become the

Due to defects in the BMS algorithm, the consistency of the lithium battery pack of a certain brand of electric vehicles has deteriorated by 40% in three years.





Contact Us

For catalog requests, pricing, or partnerships, please visit:
<https://www.talbert.co.za>