

Lithium battery pack has a string of fully charged





Overview

Can a lithium ion battery be fully charged?

A battery may be fully charged, but the prevailing conditions will prompt a continued charge, causing stress. While the traditional lithium-ion has a nominal cell voltage of 3.60V, Li-phosphate (LiFePO) makes an exception with a nominal cell voltage of 3.20V and charging to 3.65V.

Can a lithium ion battery pack have multiple strings?

Whenever possible, using a single string of lithium cells is usually the preferred configuration for a lithium ion battery pack as it is the lowest cost and simplest. However, sometimes it may be necessary to use multiple strings of cells. Here are a few reasons that parallel strings may be necessary:.

Do lithium ion batteries need a high charge voltage?

Data suggests that maintaining a charge between 20% and 80% can help preserve battery health longer. This myth confuses lithium-ion batteries with nickel-based batteries, which initially require a high charge voltage. Lithium-ion batteries operate differently.

Should you store lithium ion batteries at full charge?

Storing lithium-ion batteries at full charge for an extended period can increase stress and decrease capacity. It's recommended to store lithium-ion batteries at a 40-50% charge level. Research indicates that storing a battery at a 40% charge reduces the loss of capacity and the rate of aging.

Why is my 12V lithium ion battery only charging to 12.8V?

Depending on its chemistry, a fully charged 12V lithium-ion battery typically reads between 13.2V and 13.6V. Why is my 12V lithium-ion battery only charging to 12.8V?

This could be due to a faulty charger, a BMS limitation, or the battery's age.



Check your charger and ensure it's compatible with lithium-ion batteries.

Can You trickle charge a lithium ion battery?

However, lithium-ion batteries can be damaged and do not benefit from trickle charging. Once a lithium-ion battery is fully charged, keeping it connected to a charger can lead to the plating of metallic lithium, which can compromise the battery's safety and lifespan.



Lithium battery pack has a string of fully charged

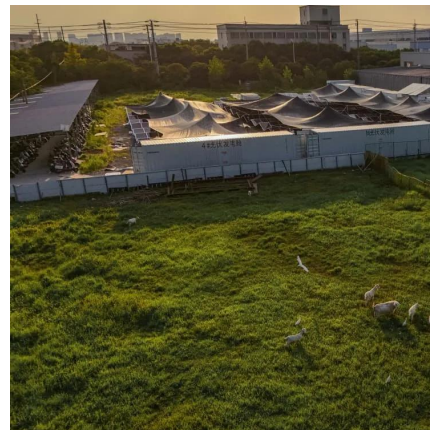


How Do You Tell If a Lithium-Ion Battery is Fully Charged?

Depending on the specific battery chemistry, a fully charged 12V lithium-ion battery typically reads between 12.6V and 13.6V. This voltage ...

Debunking Lithium-Ion Battery Charging Myths: Best Practices for

Explore the truth behind common lithium-ion battery charging myths with our comprehensive guide. Learn the best practices to enhance your battery's performance and extend its lifespan.



What Should a Fully Charged 48V Lithium Battery Read?

A fully charged 48V lithium battery typically reads around 54.4 volts when at rest and not under load. This voltage indicates that the battery is in optimal condition and ready for ...

What is the Voltage of a 12-Volt Lithium-Ion Battery When Fully Charge

When these three batteries are fully charged, the



total voltage will be equal to the sum of the three battery voltage, i.e., $4.2V * 3 = 12.6 V$. This is the ideal voltage value of 12V ...



Battery shows fully charged but does not work. Tried jump

Make sure the battery is fully seated. It'll feel like it clicks when it's fully in. I had a problem with that. Charger said it was fully charged, but it never seated enough to charge the battery.



Went into basement to see all 3 of my Ego batteries blinking

Every six months of storage, fully charge the Lithium-Ion battery pack. Exterior may be cleaned with a cloth or soft non-metallic brush. This battery pack has equipped with an advanced self ...



What is the Voltage of a 12-Volt Lithium-Ion Battery ...

When these three batteries are fully charged, the total voltage will be equal to the sum of the three battery voltage, i.e., $4.2V * 3 = 12.6 V$. This is ...





How to know if the li-ion batteries are fully charged?

How close the cell gets to full charge depends on the charger settings (charging current, cutoff %, peak voltage) and the internal resistance of the cell. 'High capacity' cells ...



How to Revive a Lithium-Ion Battery: Step-by-Step Guide

Parallel Charging Parallel charging is the term which means the technique where a healthy fully charged lithium-ion battery is connected to a ...

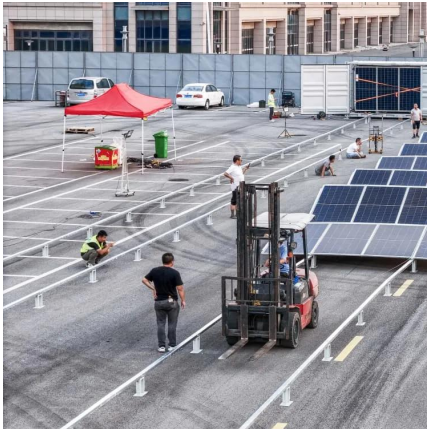
OPERATOR S MANUAL MANUAL DEL USUARIO

minMinute Time Lithium-Ion Battery Recycling Designates that this tool is in compliance with Lithium-Ion battery recycling program requirements Safety Alert Indicates a potential personal ...



One parallel group of cells in a Lithium batterh pack discharged

I built a few large 18650 Lithium battery packs recently, one using smart BMS and the rest using no intelligence BMS. for one battery packs using no intelligence BMS, one ...



Common Problems and Analysis of Lithium Polymer Battery Pack

After the battery pack is fully charged, it is normal, but it is left standing or low voltage immediately after using it for a period. This may be due to the large self-discharge of the battery or the ...



12V Lithium-Ion Battery: What Voltage at Full Charge?

Depending on the specific battery chemistry, a fully charged 12V lithium-ion battery typically reads between 12.6V and 13.6V. This voltage range is narrower and more stable than ...

BU-409: Charging Lithium-ion

Full charge occurs when the battery reaches the voltage threshold and the current drops to 3 percent of the rated current. A battery is also considered fully ...





Craftsman 20V Battery Not Powering Tools?

The front light Contractor's Assistant chat
Customer: I have a 20V lithium battery that is fully charged but won't power my tools. The front light flashes once and ...

What does lithium battery string mean

Whenever possible, using a single string of lithium cells is usually the preferred configuration for a lithium ion battery pack as it is the lowest cost and simplest.



How do I know when the battery is fully charged?

The compatible chargers will have a red light while charging and a green light when charging is complete. You can calculate the charge time by dividing your battery capacity by ...

Lithium-ion Battery and Lithium Iron Phosphate Battery

Charging methods for lithium batteries including slow charge, fast charge and smart charge techniques.



BU-409: Charging Lithium-ion

Full charge occurs when the battery reaches the voltage threshold and the current drops to 3 percent of the rated current. A battery is also considered fully charged if the current levels off

...



What do the lights mean on a Craftsman battery charger?

How long does it take for a new Craftsman battery to charge? 60 minutes This V20* Lithium Ion Charger is compatible with all th CRAFTSMAN V20* power tool and outdoor ...



[Learn About Lithium Ion Battery Six Cell](#)

Learn about six-cell lithium-ion batteries and how they power devices. Discover key features and make informed choices today.





How many strings are 48V20AH lithium battery packs? How to ...

In the lithium battery pack, multiple lithium batteries are connected in series to obtain the required operating voltage. If what is needed is higher capacity and higher current, ...



How Do You Tell If a Lithium-Ion Battery Is Fully Charged?

To determine if a lithium-ion battery is fully charged, check for indicators such as a green LED light on the charger or device, or use a battery management system (BMS) that ...



How to Charge Lithium Batteries: Best Practices for Longevity and

Charging lithium batteries correctly is crucial for maximizing their lifespan and ensuring safety. Following best practices can help prevent damage, enhance performance, ...



[How many strings are 48V20AH lithium battery ...](#)

In the lithium battery pack, multiple lithium batteries are connected in series to obtain the required operating voltage. If what is needed is higher ...



18v 4ah battery fully charged, but won't power any tools. : r/ryobi

I have a 18v battery with indicator light that is fully charged and reads 18v on my multimeter but will not power any tools, I've tried cleaning connectors (which look good). I'm wondering if ...



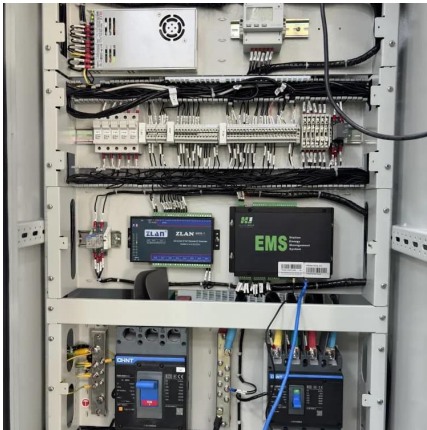
How to know if the li-ion batteries are fully charged?

How close the cell gets to full charge depends on the charger ...

How Do You Tell If a Lithium-Ion Battery is Fully Charged?

There are several ways to tell if your lithium battery is fully charged. Fully charged lithium-ion batteries should measure around 4.2 volts. Remember that this method is not ...





Strings, Parallel Cells, and Parallel Strings

While it seems counter-intuitive, it is possible (in fact, likely) when the charger shuts off due to a fully charged cell in one string, that string may continue to be charged by another parallel ...

Contact Us

For catalog requests, pricing, or partnerships, please visit:
<https://www.talbert.co.za>