

Lithium battery pack fully charged 4 17v





Overview

What is the voltage of a lithium battery?

For example, a fully charged lithium-ion cell typically has a voltage of 4.2V, while a discharged cell may have a voltage of 3.0V or lower. Monitoring voltage is crucial for maintaining lithium batteries, as overcharging or over-discharging can damage the cells and reduce their lifespan.

What is a lithium battery full charge voltage?

The lithium battery full charge voltage range is such that they are deemed wholly charged when the voltage hits about 4.2 V. Some batteries can reach 4.35V at full charge. It's crucial to remember that going beyond this voltage might result in overcharging, which can be dangerous and shorten the battery's life.

What voltage is a 1 cell lithium ion battery?

Lithium-ion batteries are most used in power stations and solar systems, all thanks to the built-in additional layer of security. The popular voltage sizes of lithium-ion batteries include 12V, 24V, and 48V. Let's understand the discharge rate of a 1-cell lithium battery at different voltages. Lithium-ion Battery Voltage Chart:.

How much voltage does a Li-ion battery have?

A Li-ion cell when fully charged at 100%SoC can have nearly 4.2V. As it starts to discharge itself, the voltage decreases, and the voltage remains to be 3.7V when the battery is at half charge, ie, 50%SoC. One can calculate the battery is to be discharged based on the voltage when the SoC is 0%. The voltage of a cell, in this case, is 3.0V.

What is the difference between a lithium ion and a discharged battery?

The chart displays the potential difference between the two poles of the battery, helping users determine the state of charge (SoC). For example, a



fully charged lithium-ion cell typically has a voltage of 4.2V, while a discharged cell may have a voltage of 3.0V or lower.

What happens when a lithium battery is charged?

A lithium battery's full charge voltage rises as it is charged. For instance, when a lithium-ion battery is ultimately charged, the voltage may increase from its nominal value—roughly 3.7 volts for a single cell—to around 4.2 volts. On the other hand, when a battery discharges, the voltage drops as the gadget draws power from the battery.



Lithium battery pack fully charged 4 17v



[The Right Way to Charge a Lithium Battery Pack](#)

This guide will provide you with in-depth, step-by-step instructions on how to charge lithium battery packs properly, covering various types and addressing ...

18650 Can not charge up to 4.2v

But 70% of them get fully charged end at 4.15v, and some at 4.13v, the rest go to fully 4.2v normally. Is it normal ? all harvested cells get about 2000 mAh after test with Opus. ...



[Lithium Battery Charge Time Calculator](#)

Need to know how long it will take to charge your lithium battery? Our Lithium Battery Charge Time Calculator helps you accurately estimate ...



A guide to lithium battery full charge voltage mechanics

A lithium battery's full charge voltage rises as it is charged. For instance, when a lithium-ion



battery is ultimately charged, the voltage may ...



A guide to lithium battery full charge voltage mechanics

A lithium battery's full charge voltage rises as it is charged. For instance, when a lithium-ion battery is ultimately charged, the voltage may increase from its nominal ...

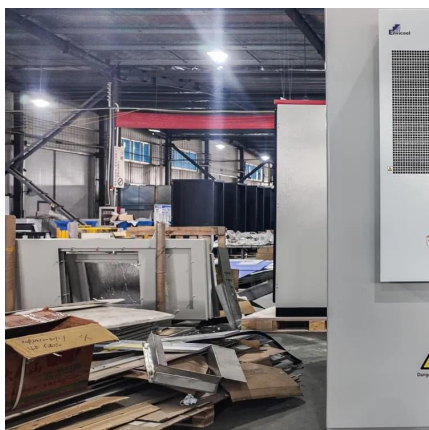
[How to Charge A LiFePO4 Lithium Battery ...](#)

Learn how to safely and effectively charge LiFePO4 lithium batteries (12V, 24V, 36V, 48V) with our comprehensive guide. Ensure optimal performance and ...



How to Charge a 12V Lithium Battery Step by Step Guide

This guide will provide you with all the necessary information to charge a 12V battery effectively and safely.





NiMH Battery Pack 16.8V (17V) 5Ah (84Wh) for ...

16.8V, 5000mAh NiMH battery pack is made of 14 pcs High quality Powerizer brand NiMH C cells. # Capacity: 5000mAh (84 wh) # Max. Discharging rate : ...



Lithium Ion Battery Voltage Explained: Everything You ...

In the discharge cycle, initially, the voltage will be 4.2V. When we continue to utilize the battery, the voltage may drop to the nominal rate of ...

What is the Voltage of a Fully Charged Lithium-Ion Battery?

Knowing the voltage of a fully charged lithium-ion battery is crucial for several reasons: Device Compatibility: Ensures that batteries are compatible with devices designed to operate at ...



Ultimate Guide to Battery Voltage Chart

These battery charging voltages can range from 2.15V per cell to 2.35V per cell, depending on the battery type. You can check or read a battery's voltage using a multimeter. Here's a 12V ...



Battery Basics: Li-ion Cells - Sunforge LLC

Genasun's pre-programmed controllers for Li-ion (LiPo/LiCoO?) have a 2-stage CC-CV* charge profile and a per cell charge voltage of $\sim 4.17V$ in order to minimize stress on the cells without ...



Can You Charge 17V Battery With 12V Charger

Using a 12V charger for a 17V battery can be ineffective. Learn the risks, alternatives, and best practices for safe charging.

Amazon : Lithium Battery Packs

Rechargeable 12V 5600mAh Lithium Battery with Charger, Bare Leads Wire Battery Pack Compatible with 12V Devices, DIY Project, RC Car, Robot, Solar Panels, LED Light Strip, ...





12V Lithium-Ion Battery: What Voltage at Full Charge?

This guide explains 12V lithium-ion battery voltage, what "fully charged" means, and why voltage discrepancies occur, with tips for optimal performance.

Li-Ion: Should I top off the battery cells to 4.2v?

Of course, if you only charge a Li-ion pack to 3.9v, and discharge to 3.6v. the battery will last many more cycles than the same battery charged at the recommended 4.2v ...



Mastering the Art of 3.7V Lithium Battery Charging ...

Unlock the secrets of 3.7V lithium battery charging voltage. Discover optimal methods for longevity and safety in this detailed guide.

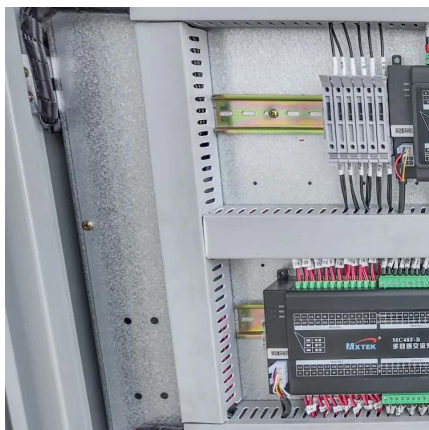
Lithium Ion Battery Voltage Explained: Everything You Need to ...

In the discharge cycle, initially, the voltage will be 4.2V. When we continue to utilize the battery, the voltage may drop to the nominal rate of 3.7V. When used more, the ...



What Should Battery Pack Voltage Be When Fully Charged?

For most common battery types, such as lead-acid and lithium-ion, fully charged voltages vary: lead-acid batteries typically read 12.6V to 12.8V, while lithium-ion batteries can ...



[Battery Basics: Li-ion Cells - Sunforge LLC](#)

Genasun's pre-programmed controllers for Li-ion (LiPo/LiCoO?) have a 2-stage CC-CV* charge profile and a per cell charge voltage of $\sim 4.17V$ in order to ...



Lithium Ion battery to "5V 1A battery pack module" only outputting 4

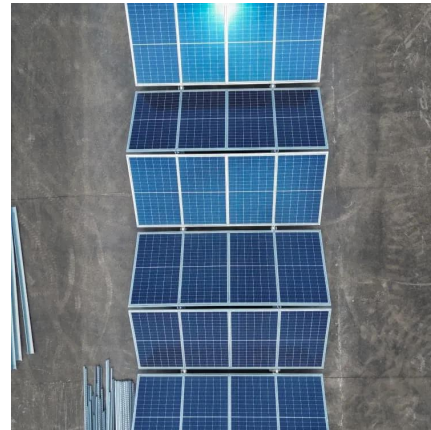
After soldering some jumper wires to the board, then plugging my battery into those and plugging the board into a usb-c charging source there's a blue LED (it's meant to be red ...





[LiFePO4 Voltage Charts \(1 Cell, 12V, 24V, 48V\)](#)

Explore the LiFePO4 voltage chart to understand the state of charge for 1 cell, 12V, 24V, and 48V batteries, as well as 3.2V LiFePO4 cells.



Amazon : Lithium Battery Packs

TalentCell Rechargeable 12V 6000mAh/5V 12000mAh DC Output Lithium ion Battery Pack for LED Strip/CCTV Camera/Telescope/Modem and More, Portable Li-ion Power Bank with 12.6V ...

4 Simple Li-Ion Battery Charger Circuits - Using LM317, NE555, ...

4 Simple Li-Ion Battery Charger Circuits - Using LM317, NE555, LM324 Last Updated on July 16, 2024 by Swagatam 224 Comments In this post I have explained a four ...



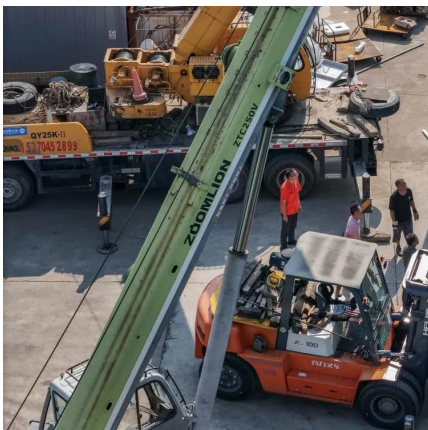
[The Right Way to Charge a Lithium Battery Pack](#)

This guide will provide you with in-depth, step-by-step instructions on how to charge lithium battery packs properly, covering various types and addressing key considerations.



What Is the Minimum Voltage for a 3.7V Lithium Battery?

What Is the Nominal Voltage of a 3.7V Lithium Battery? A 3.7V lithium battery has a nominal voltage of approximately 3.7 volts, representing its average operating voltage during ...



Lithium Ion battery to "5V 1A battery pack module" ...

After soldering some jumper wires to the board, then plugging my battery into those and plugging the board into a usb-c charging source there's a blue LED ...

Lithium Battery Voltage Chart

For example, a fully charged lithium-ion cell typically has a voltage of 4.2V, while a discharged cell may have a voltage of 3.0V or lower. Monitoring voltage is crucial for ...





Charging 18650 4s setup for battery , Electronics Forum (Circuits

Hi all, first post here- just joined for some advice!
Im making a battery pack using 4 lithium ion 18650 cells in series totalling a charged voltage of about 16.8V Im aware with the ...

Contact Us

For catalog requests, pricing, or partnerships, please visit:
<https://www.talbert.co.za>