

Is base station communication engineering reliable Cost





Overview

What is a base station?

What is Base Station?

A base station represents an access point for a wireless device to communicate within its coverage area. It usually connects the device to other networks or devices through a dedicated high bandwidth wire or fiber optic connection. Base stations typically have a transceiver, capable of sending and receiving wireless signals;.

What are the properties of a base station?

Here are some essential properties: Capacity: Capacity of a base station is its capability to handle a given number of simultaneous connections or users. Coverage Area: The coverage area is a base station is that geographical area within which mobile devices can maintain a stable connection with the base station.

Why do we need a base station?

Technological advancements: The New technologies result in evolved base stations that support upgrades and enhancements such as 4G, 5G and beyond, its providing faster speeds with better bandwidth. Emergency services: They provide access to emergency services, so that in case of emergency, people can call through their mobile phones.

Why are base stations important in cellular communication?

Base stations are important in the cellular communication as it facilitate seamless communication between mobile devices and the network communication. The demand for efficient data transmission are increased as we are advancing towards new technologies such as 5G and other data intensive applications.

What happens if a base station receives a stronger signal?



If another base station is receiving the mobile with a stronger signal than the current base station, a signalling message is sent to the mobile on the voice channel from the current base station commanding the mobile to a new voice channel, namely a free voice channel from those allocated to the neighbouring cell.

Why does a base station run in parallel?

The more signals are received in parallel, the more demodulating and decoding agents run in parallel in a base station. Core network implement cognitive algorithm to select base station for downlink transmission. Because of large coverage overlaps, several base stations are in communication range of an object.



Is base station communication engineering reliable Cost



[An Independent UAV-Based Mobile Base Station](#)

We develop a prototype of a proposed mobile base station and test its operation in an outdoor environment. The experimental results provide ...

What Is Base Station Subsystem

The modern world relies heavily on seamless connectivity, enabling communication from instant messaging to critical infrastructure control. This intricate network hinges on a crucial ...



Wireless Communication Base Station Location Selection ...

Abstract: Base station location selection and network optimization are critical to improving the performance of wireless communication networks in terms of latency reduction. ...

What You Should Know About High Power Base Stations

High Power Mobile Base Stations are advanced wireless communication systems designed to



handle the rugged demands of construction sites. Offering robust signals, ...

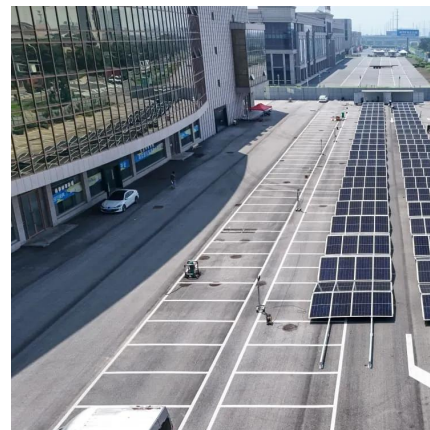


Aerial Base Stations for Global Connectivity: Is It a Feasible and

In addition, we investigate both the coverage probability and the reliability of the communication links via simulations, proving that the integration of ABSs can be quite ...

U.S. Army Corps of Engineers Headquarters > Missions > Cost Engineering

Accuracy is achieved through the cost estimate consisting of two components, the base cost estimate (the cost estimate reflecting the design deliverables at hand) and the contingency ...



Base station performance and costs , Download Table

This paper presents a case study of a single-chip 3G WCDMA/FDD base station implementation based on a circuit-switched network on chip.



Base station performance and costs , Download Table ...

This paper presents a case study of a single-chip 3G WCDMA/FDD base station implementation based on a circuit-switched network on chip.



What is the cost of building and maintaining a communication ...

In conclusion, building and maintaining a communication base station involves significant initial setup costs and ongoing maintenance expenses. These costs can vary widely depending on ...

Aerial Base Stations for Global Connectivity: Is It a Feasible and

Even though achieving global connectivity represents one of the main goals of 5G and beyond wireless networks, exurban areas are still suffering frequent outages because of ...



What is the cost

In conclusion, the cost - effectiveness analysis of using CPRI cables in a base station reveals that they offer significant advantages in terms of performance, reliability, and long - term cost savings.



Reliability prediction and evaluation of communication base stations ...

Abstract One of the primary tasks for effective disaster relief after a catastrophic earthquake is robust communication. In this paper, we propose a simple logistic method based ...

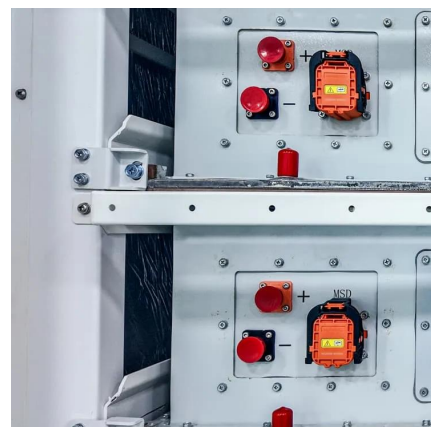


Reliability prediction and evaluation of communication base stations ...

In this paper, we propose a simple logistic method based on two-parameter sets of geology and building structure for the failure prediction of the base stations in post-earthquake.

Base Stations

Base stations form a key part of modern wireless communication networks because they offer some crucial advantages, such as wide coverage, continuous communications and ...





Reliability prediction and evaluation of communication base ...

Abstract One of the primary tasks for effective disaster relief after a catastrophic earthquake is robust communication. In this paper, we propose a simple logistic method based ...

5G Communication Base Stations Participating in Demand ...

However, pumped storage power stations and grid-side energy storage facilities, which are flexible peak-shaving resources, have relatively high investment and operation ...



Communication Base Station Lifecycle Cost , Huijue Group E-Site

Will tomorrow's base stations be invisible, self-powering entities embedded in street furniture? Operators betting on communication base station lifecycle cost optimization today will likely ...

Base Stations

Base stations form a key part of modern wireless communication networks because they offer some crucial advantages, such as wide ...



Optimizing the ultra-dense 5G base stations in urban outdoor ...

The developed model can facilitate the rollout of 5G technology. Due to the high propagation loss and blockage-sensitive characteristics of millimeter waves (mmWaves), ...



What is the Point of an RTK Base Station?

Learn why base stations are essential for reliable, high-precision RTK surveys and how to select the right one for your work.



What You Should Know About High Power Base Stations

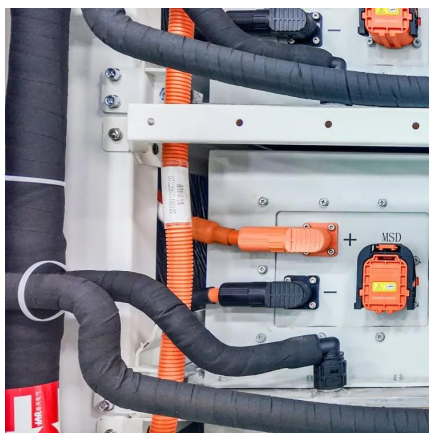
High Power Mobile Base Stations are advanced wireless communication systems designed to handle the rugged demands of ...





Site Energy Revolution: How Solar Energy Systems Reshape Communication

Discover how solar energy is reshaping communication base stations by reducing energy costs, improving reliability, and boosting sustainability. Explore Huijue's solar solutions ...



Basestation

A base station (BS) is defined as a fixed communication facility that manages radio resources for one or more base transceiver stations (BTSs), facilitating radio channel setup, frequency ...

Optimal configuration of 5G base station energy storage ...

The high-energy consumption and high construction density of 5G base stations have greatly increased the demand for backup energy storage batteries. To maximize overall ...



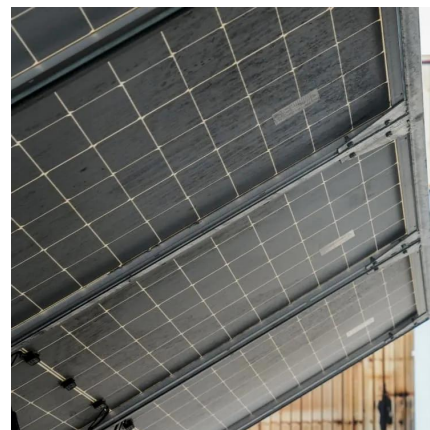
BelFone BF-TR952 Distributed Trunking Base Station , Scalable

BelFone BF-TR952 is a distributed trunking base station designed for seamless, scalable, and reliable communication. With advanced DMR trunking, IP interconnect, and wide coverage, it ...



Aerial Base Stations for Global Connectivity: Is it a Feasible and

Contextually, we focus on one of the most promising solutions to provide sufficient and reliable coverage in far-flung areas: aerial base stations, which consist of unmanned aerial ...



What is the cost of building and maintaining a communication base station

In conclusion, building and maintaining a communication base station involves significant initial setup costs and ongoing maintenance expenses. These costs can vary widely depending on ...

Base Transceiver Stations (BTS)

Conclusion Base Transceiver Stations are the unsung heroes of our wireless world, particularly in ensuring robust, reliable in-building connectivity. As our ...





What Is A Base Station?

A base station is an integral component of wireless communication networks, serving as a central point that manages the transmission and ...

Contact Us

For catalog requests, pricing, or partnerships, please visit:
<https://www.talbert.co.za>