

Ireland Cork Energy Storage Battery Project





Overview

ESB has today opened its latest major battery plant at its Aghada site in Co Cork which will add 150MW (300MWh) of fast-acting energy storage to help provide grid stability and deliver more renewable power onto Ireland's electricity system. What will ESB's new battery plant do for Ireland?

Friday, 15th November 2024 Cork, Ireland ESB has today opened its latest major battery plant at its Aghada site in Co Cork which will add 150MW (300MWh) of fast-acting energy storage to help provide grid stability and deliver more renewable power onto Ireland's electricity system.

How will a new battery plant help Ireland's Electricity System?

Picture: Darragh Kane The Electricity Supply Board has opened a new major battery plant at its Aghada site in County Cork. The project will add 150MW (300MWh) of fast-acting energy storage to provide grid stability and deliver more renewable power to Ireland's electricity system.

What is ESB's first battery project in Ireland?

"This is ESB's first battery project in Ireland – this and four other battery projects now in development by ESB will deliver 300MW of battery capacity within the next two years. These projects will support the delivery of a stable and cleaner electricity grid, which is set to be powered by 80pc renewable generation by 2030," he added.

Where is a new battery storage site in Northern Ireland?

The largest energy storage site in Northern Ireland is located at Drumkee, a townland in Killyman, Co Tyrone. A new battery storage site at this location has been commissioned and will be operational in the first quarter of the new year.

Where is ESB launching a battery energy storage system?

ESB has officially opened a 150MW (300MWh) battery energy storage system



(BESS) at its Aghada site in County Cork, marking a major milestone in Ireland's renewable energy infrastructure.

Which ESB projects are being delivered in Cork & Dublin?

This battery-energy-storage-system (BESS) is the latest in ESB's pipeline of projects to be delivered at sites in Cork and Dublin, which are part of its investment of up to €300m in the technology. In 2022, ESB launched the first of its BESS sites, the 19MW (38MWh) project, which is also in Aghada.



Ireland Cork Energy Storage Battery Project



ESB officially unveils battery storage project in Co Cork

ESB has opened its latest major battery plant at its Aghada site in Co Cork which will add 150MW (300MWh) of fast-acting energy storage to ...

Newly opened Cork battery plant to help Ireland meet its climate

The ESB has partnered with international energy storage company Fluence as well as Irish companies Kirby Group and Powercomm Group to open a fast-acting battery plant in ...



Kestrel Project

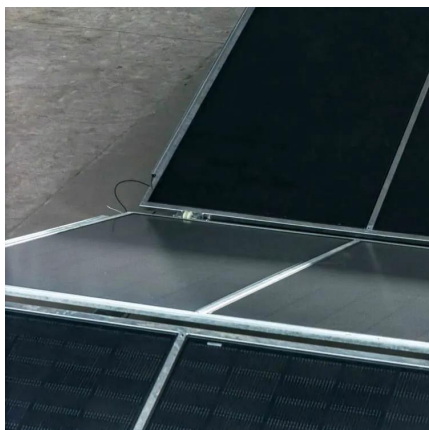
The Kestrel Project has embarked upon an integrated Irish energy system modelling and defined storage requirements for renewable gas and green ...

[ESB eyes new battery sites amid EUR300m spend](#)

ESB built the battery plant at a cost of around EUR75 million, working with New York-listed



energy storage specialist Fluence, Irish engineers Kirby Group and national grid ...

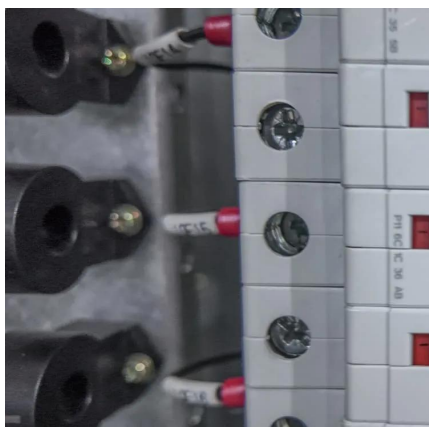


ESB officially opens its latest battery storage project in Co Cork ...

ESB has today opened its latest major battery plant at its Aghada site in Co Cork which will add 150MW (300MWh) of fast-acting energy storage to help provide grid stability ...

ESB Opens New Major Battery Plant In Cork , Irish Construction ...

The latest ESB major battery plant has opened at the company's site in Aghada, Cork. This battery energy storage system (BESS) project, which forms part of ESB's EUR300m ...



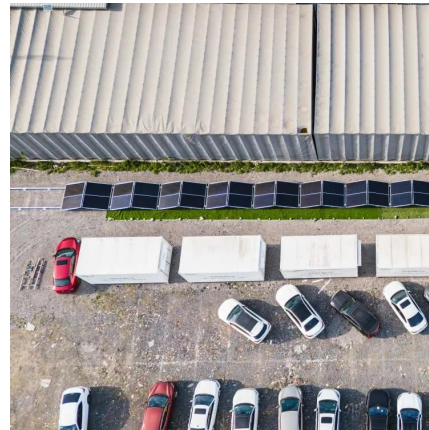
BESS

BESS - Battery Energy Storage Solution One of Ireland's largest C&I Battery Energy Storage Solutions (BESS), seamlessly integrated with on-site solar PV that enables ...



Ireland's largest 75MW/ 150MWh battery storage ...

The Republic of Ireland has recently witnessed the official inauguration of the country's 'largest' grid-scale battery energy storage facility ...



Newly opened Cork battery plant to help Ireland meet ...

The ESB has partnered with international energy storage company Fluence as well as Irish companies Kirby Group and Powercomm Group to ...

BALLYNAHONE LONG ENERGY STORAGE

The Ballynahone Long Duration Energy Storage (LDES) project, proposed by FuturEnergy Ireland Development DAC (the Applicant), aims to provide long-term energy storage to support the ...



Ireland: ESB officially opens its latest battery storage project in Co

This battery energy storage system (BESS) project is the latest in ESB's pipeline of projects delivered at sites in Dublin and Cork which are part of its investment of up to EUR300m ...



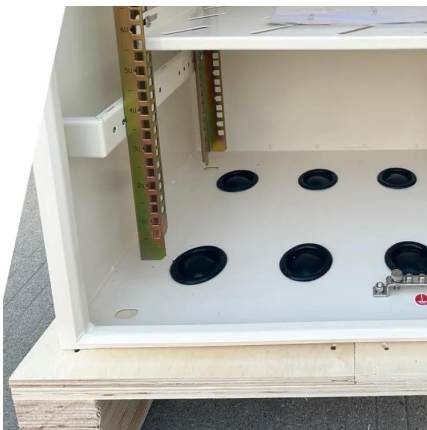
ESB opens major new battery plant at Cork site

The Electricity Supply Board has opened a new major battery plant at its Aghada site in County Cork. The project will add 150MW ...



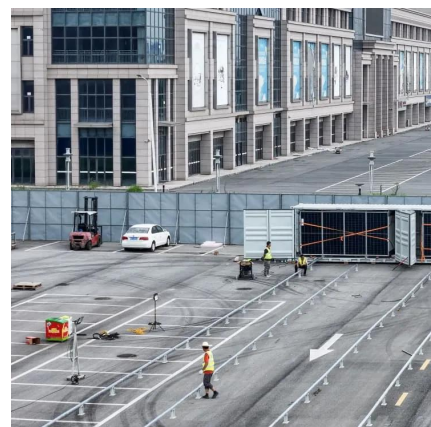
ESB Officially Opens Its Latest Battery Storage ...

ESB has opened its latest major battery plant at its Aghada site in Co Cork, which will add 150MW (300MWh) of fast-acting energy storage to ...



ESB Launches Largest Battery Energy Storage Project in Co Cork

ESB has officially opened a 150MW (300MWh) battery energy storage system (BESS) at its Aghada site in County Cork, marking a major milestone in Ireland's renewable ...





[ESB opens major new battery plant at Cork site](#)

The Electricity Supply Board has opened a new major battery plant at its Aghada site in County Cork. The project will add 150MW (300MWh) of fast-acting energy storage to ...

Battery Energy Storage System Development in Co. Cork

Permission for 1) 1no. enclosed battery storage system compound on a total of c. 2-hectare site, to include; battery storage blocks on concrete support foundations with power conversion ...



ESB announces first battery storage projects in Cork and Dublin

State owned electricity supply company ESB has announced its first major battery projects in Ireland, at sites in Inchicore, Co Dublin and Aghada, Co Cork. Both battery energy storage ...



ESB Officially Opens Its Latest Battery Storage Project in Co Cork

...

ESB has opened its latest major battery plant at its Aghada site in Co Cork, which will add 150MW (300MWh) of fast-acting energy storage to help provide grid stability and ...



[SSE Acquires 120MW/240MWh Battery Storage Project](#)

SSE has acquired the project development rights for a 120MW/240MWh grid-scale battery energy storage system (BESS) project in Ireland's Midlands from UK-based renewable ...



ESB opens massive battery bank in East Cork to store ...

ESB has today opened a major battery plant at Aghada, Co Cork, which will add 19MW (38MWh) of fast-acting energy storage to help provide ...



[ESB Launches Largest Battery Energy Storage ...](#)

ESB has officially opened a 150MW (300MWh) battery energy storage system (BESS) at its Aghada site in County Cork, marking a major ...





ESB officially unveils battery storage project in Co Cork

ESB has opened its latest major battery plant at its Aghada site in Co Cork which will add 150MW (300MWh) of fast-acting energy storage to help provide grid stability and ...

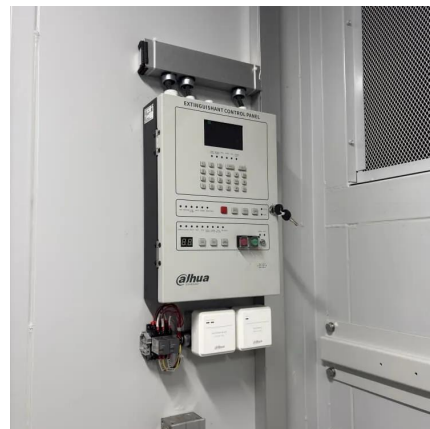


19 MW/38 MWh Aghada battery energy storage project in Cork

The project involves the development of a 19 MW/38 MWh battery energy storage system located in Aghada, Cork County, Ireland.

[ESB opens 150MW battery storage plant in Cork](#)

ESB has opened a major battery plant at its Aghada site in Co Cork, adding 150MW in energy storage to help provide grid stability and deliver more renewable power.



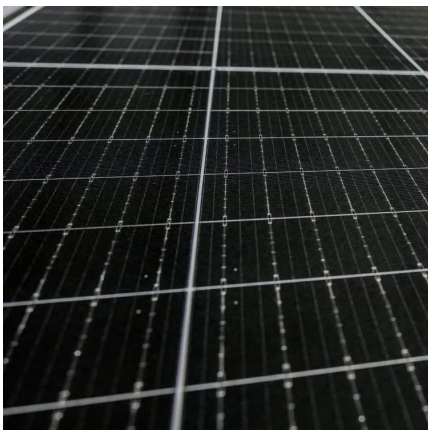
[ESB launches 150MW/300MWh Irish BESS](#)

Irish state-owned electricity company ESB has opened a 150MW/300MWh battery energy storage system (BESS) at its Aghada site in Co Cork. The project is the latest step in ...



Battery Storage

This guide has been produced to accompany the SEAI Single Point of Contact Renewable Energy online tool. It provides a more detailed overview of specific technological, legislative, and ...



SSE receives planning approval for Mullafarry battery ...

SSE has received a grant of planning permission from Mayo County Council for its proposed Mullafarry Battery Energy Storage System ...

ESB Opens New Major Battery Plant In Cork , Irish Construction ...

This battery energy storage system (BESS) project, which forms part of ESB's EUR300m investment in the technology, will add 150MW (300MWh) of fast-acting energy storage ...





[Fluence and Irish state-owned power group ESB](#)

State-owned electricity company ESB and energy storage technology company Fluence have announced two new battery projects in ...

Contact Us

For catalog requests, pricing, or partnerships, please visit:
<https://www.talbert.co.za>