

Inverter works 24 hours





Overview

Yes, you can leave an inverter running 24 hours a day, provided it is properly sized, maintained, and connected to a reliable power source. Inverters are designed to convert DC power from batteries into AC power, which is suitable for running household appliances and electronics. How long can an inverter AC run?

Inverter ACs are designed to run for extended periods of time, usually around 10-12 hours. However, if you have an inverter AC that is only rated for shorter run times, like 6 hours, then it's best to not run it continuously for more than that. Doing so can shorten the lifespan of your AC. What is the best way to use inverter AC?

.

Do inverters run all day?

Inverters are made to run all day . If you just turn it off and on when you want to use it it will work like a stand ac Unit and just work at 100% speed and capacity. Now you can turn the temp up a little bit during the day so it does not have to run too hard when you finally want to drop to your sleeping temps

.

Can a high powered inverter run 24/7?

High powered inverters have been built to run 24/7. As long as you use the inverter correctly there should be no problems. Portable inverters are a different story. With a capacity of under 500 watts, they are designed to run a limited number of appliances and may need shutting down. Refer to the manufacturer website for details.

How to use an inverter AC?

When using an inverter AC, it is important to make sure that the inverter is properly sized for the AC. The inverter must be able to handle the maximum power draw of the AC. If the inverter is too small, it will be overloaded and



could be damaged. Be sure to connect the inverter to the AC using the correct polarity.

Should I Keep my AC inverter on all the time?

Most people believe that they should keep their AC inverter on all the time in order to keep their air conditioner running properly. However, there are a few things that you should keep in mind before making this decision. First, you should know that an AC inverter is designed to convert DC power from your home's electrical system into AC power.

When should I replace my inverter AC?

And, if you notice that your inverter is starting to fail, be sure to replace it as soon as possible to prevent any damage to your air conditioner. How long can inverter AC run continuously?

Inverter ACs are designed to run for extended periods of time, usually around 10-12 hours.



Inverter works 24 hours



Is it okay to use aircon 24 hours (YES and WHY)

Can aircon run 24 hours? Yes! But can you leave aircon on 24/7? We understand how essential air conditioners can be inseparable in our daily lives. Air ...

How a Power Inverter Works: Basic Principles , L& T-SuFin

Explore how inverters work to convert battery power into usable AC electricity. Learn the process behind inverter operation and its role in homes and solar setups.



Powering On: The Pros and Cons of Leaving Your Inverter On All ...

Turning an inverter on and off repeatedly can cause wear and tear on the internal components, leading to a shorter lifespan. Leaving it on continuously can reduce the stress on ...



How Long Can You Run an Inverter Generator?

For extended power outages, you may often run inverter generators in intervals--such as 12-16



hours per day--accumulating 150 to 200 hours over ...



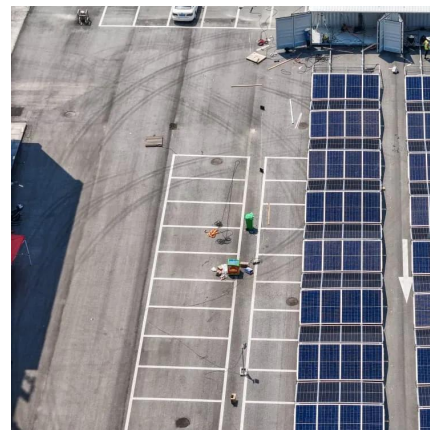
What percentage of inverter capacity can you run continuously?

Like all electronics, the higher load or duty cycle will work but usually affects the lifespan of the device. That being said, I don't see a problem with running at 50%.



Should I Leave My Inverter On All the Time?

Inverters are required to run AC appliances on solar power. From homes to RVs they are fixtures in PV systems. But is it safe to leave an inverter on all the time? Or should you turn it off every ...



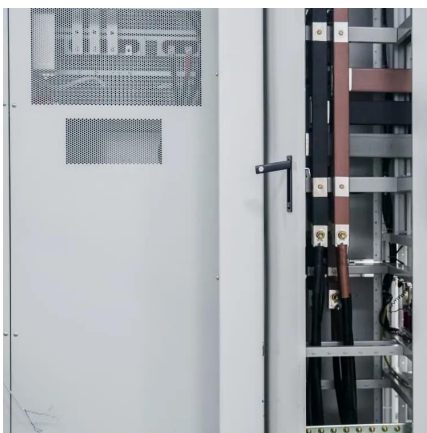
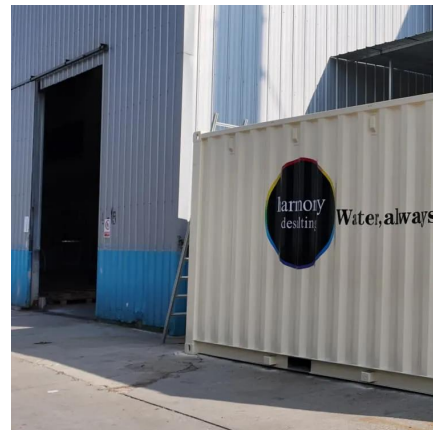
Is it better to leave an inverter AC constantly running or to

I spent maybe 2 hours searching and couldn't find a definitive answer. Is it better (more energy efficient) to leave an inverter AC always running and just lower the power and temperature at ...



Can i leave the solar inverter on all the time?

Regular maintenance and monitoring of the system are essential to ensure that the solar inverter continues to operate seamlessly 24 hours a day. ...



Inverter Runtime: Can It Run 24/7? Discover the Truth! -- ...

Yes, you can leave an inverter running 24 hours a day, provided it is properly sized, maintained, and connected to a reliable power source. Inverters are designed to convert ...

Solar 10.3kW Battery and Inverter

AlphaESS smile5 battery bank with 5kw inverter. Works perfectly. Only changed it to upgrade. Used but like new. 10.3kw battery. Worth \$9000



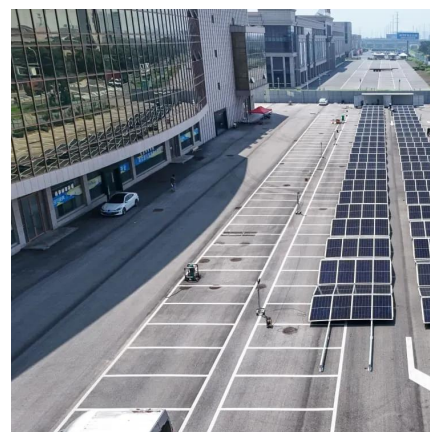
Can the Inverter Run Continuously for 24 Hours?

High quality inverters are fully capable of continuous operation 24 hours a day. The key lies in the design of the inverter to effectively handle the heat and load pressure generated ...



How many units of Kwh does Inverter AC consume overnight and in 24

How many units of Kwh does Inverter AC consume overnight and in 24 hours how do Inverter AC's work Tech Guy Charlie 155K subscribers 3.3K



Get the Best Inverter Battery With 24 Hours Back Up for Your ...

Power cuts can be more than just annoying. When your entire home depends on electricity-be it for work-from-home setups, kitchen appliances, or kids' online classes-a ...

Can power inverter work for 24 hours?

Normally, power inverters work for a long period of time - but it also depends on what appliance or gadget was it used for. For small in-vehicle type of inverters, it can run an equipment for a



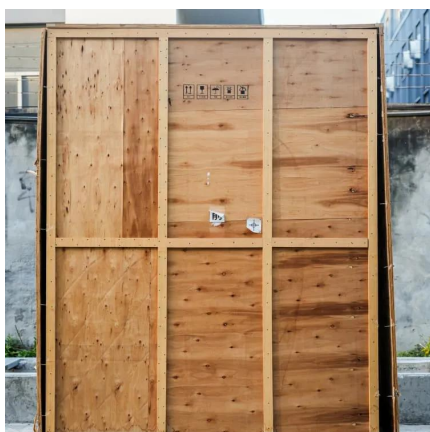
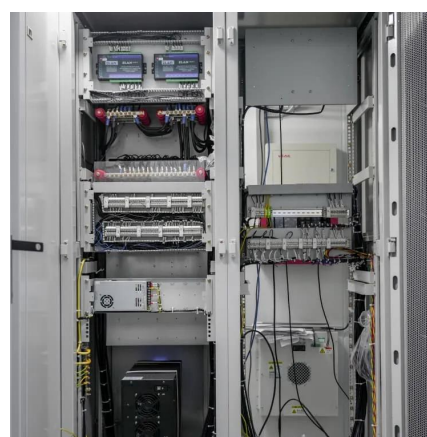


Am I better off leaving split type inverter AC on 24/7? Or

Last week, we had a 2.5hp split-type inverter AC installed in our bedroom. When me and my wife are working from home, we're practically in the room for almost the whole day.

Should I Leave My Inverter Ac On All The Time , Smart AC ...

A common question among inverter AC users is whether to leave the inverter running continuously. The answer depends on the setup of your inverter. If it's dedicated solely ...



Should I Leave My Inverter Ac On All The Time

A common question among inverter AC users is whether to leave the inverter running continuously. The answer depends on the setup of your ...

Can Solar Inverters Operate Continuously?

Can Solar Inverters Run 24 Hours a Day? The short and simple answer is yes. An inverter can run 24 hours a day without any issues. As long as there is a power supply and no ...



Solis Household Consumption Monitoring Solution

Day-Time Generation and Consumption o
Inverter generation and energy flow at grid point
will be uploaded to the monitoring system
through the inverter datalogger. Within the ...



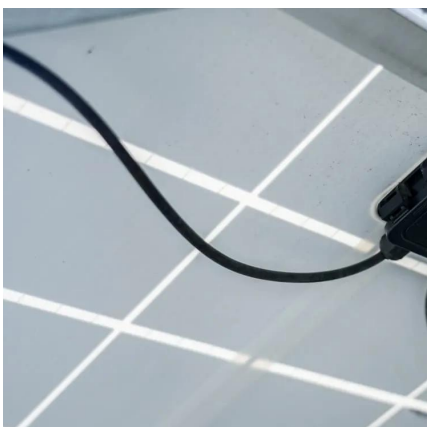
Can an Inverter Run 24 Hours a Day?

Firstly, yes, an inverter can run 24 hours a day.
Inverters are typically designed for long-duration
operation and have efficient cooling systems to
ensure stable performance ...



Can an Inverter Run 24 Hours a Day?

Firstly, yes, an inverter can run 24 hours a day.
Inverters are typically designed for long-duration
operation and have efficient cooling ...





Do Inverter Air Conditioners REALLY Save Electricity?

More and more shops are selling inverter air conditioners only while ditching the traditional non-inverter models. People always say that ...



[Inverter Air Conditioner: A Complete Guide \(for ...](#)

Some technicians may charge more for the installation of inverter air conditioners due to the additional wiring work. Nonetheless, most inverter ...

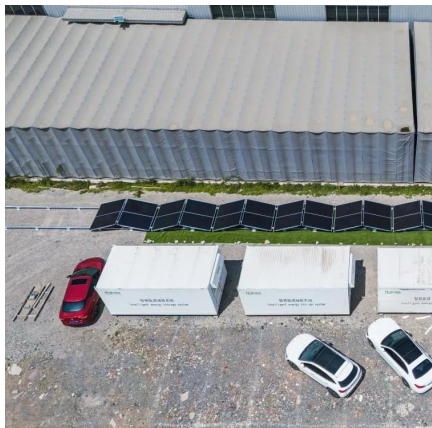
Understanding Battery Capacity and Inverter Compatibility

Understanding the conversion between amp-hours and watt-hours is fundamental in managing energy storage and consumption. Whether you are calculating



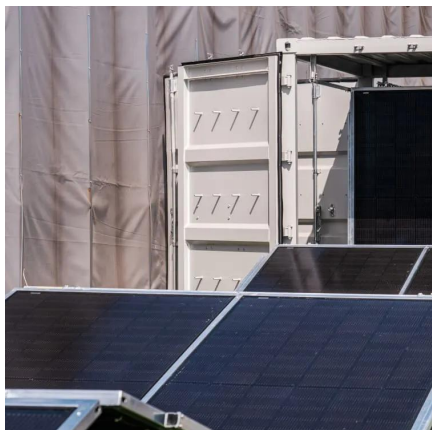
[Can the Inverter Run Continuously for 24 Hours?](#)

High quality inverters are fully capable of continuous operation 24 hours a day. The key lies in the design of the inverter to effectively handle the ...



How Long Can You Run an Inverter Generator? , EcoFlow US

For extended power outages, you may often run inverter generators in intervals--such as 12-16 hours per day--accumulating 150 to 200 hours over a week. However, continuous operation ...



How Many Batteries for 3000w Inverter and What Will ...

This post explores how many batteries and solar panels for a 3000W inverter and outlines what can a 3kw inverter run in different solar setups.

Contact Us

For catalog requests, pricing, or partnerships, please visit:
<https://www.talbert.co.za>