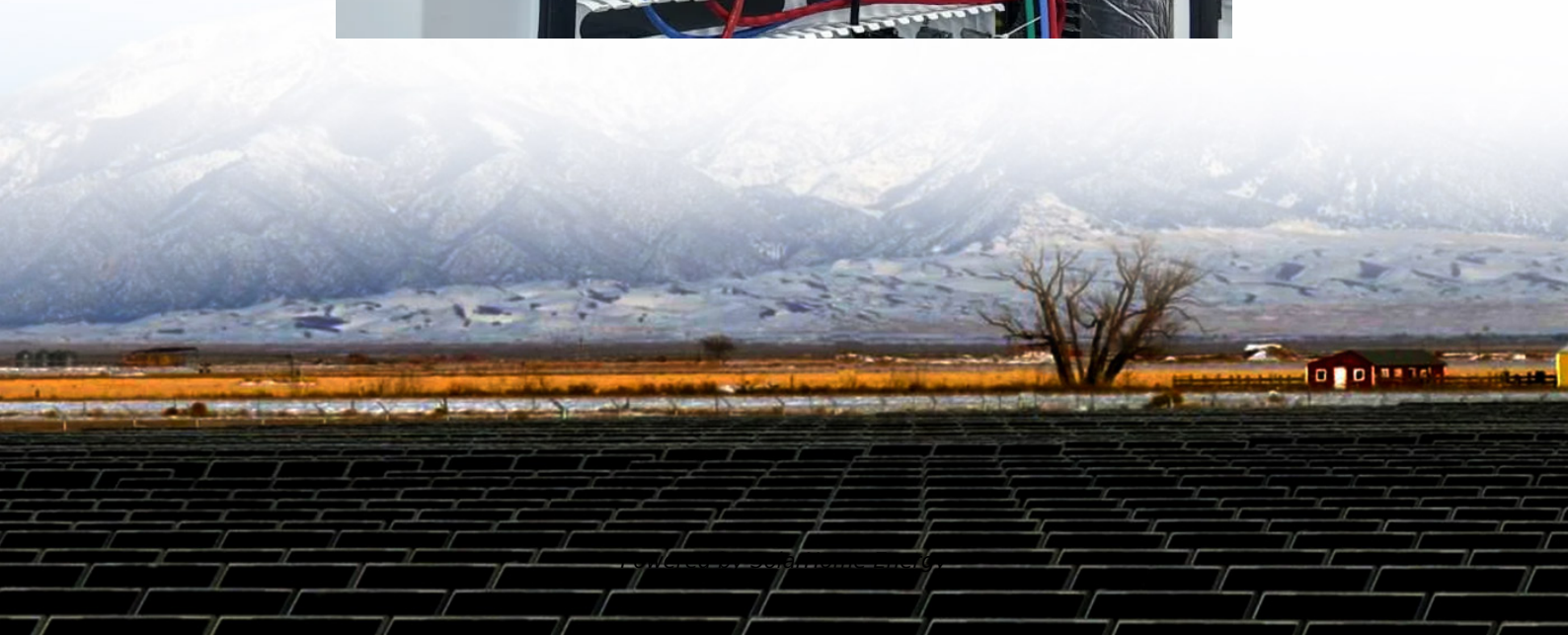
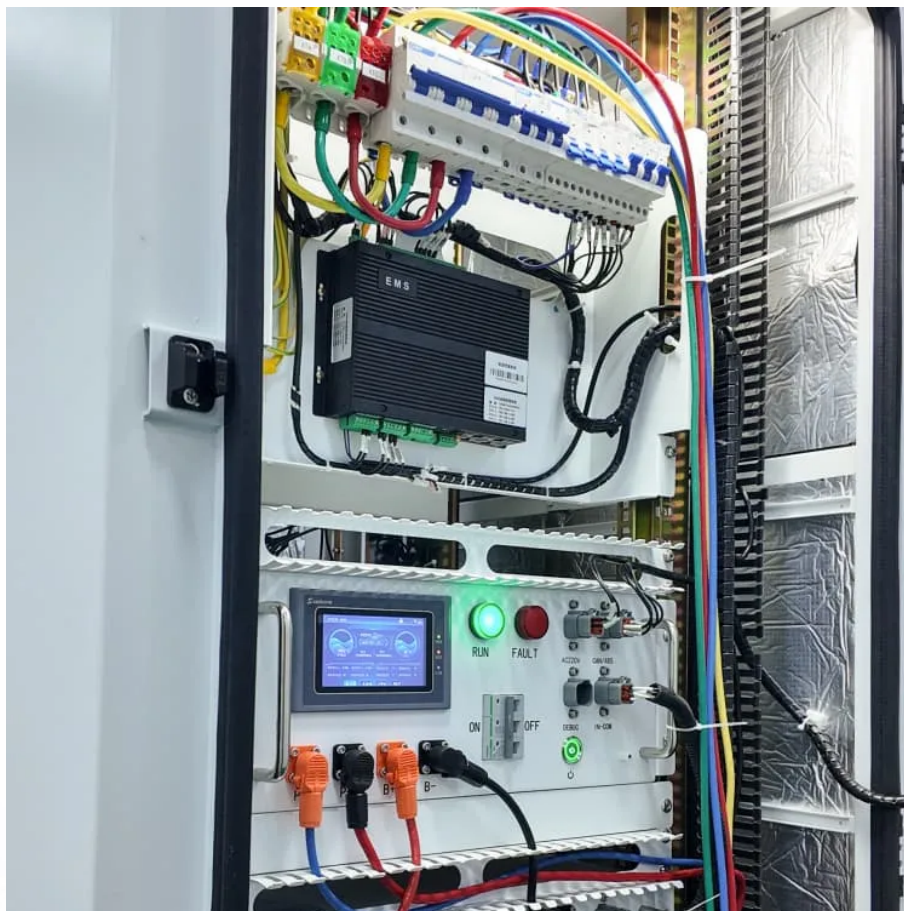


Inverter voltage setting value





Overview

What are inverter settings?

Inverter Settings 1. To set output voltage of inverter - This is normally 230 Vac. Possible values 210V ~ 245V. 2. Used to enable/disable the internal ground relay functionality. Connection between N and PE during inverter operation. - The ground relay is useful when an earth-leakage circuit-breaker is part of the installation.

What are inverter specifications?

Specifications provide the values of operating parameters for a given inverter. Common specifications are discussed below. Some or all of the specifications usually appear on the inverter data sheet. Maximum AC output power This is the maximum power the inverter can supply to a load on a steady basis at a specified output voltage.

How much power does an inverter need?

It's important to note what this means: In order for an inverter to put out the rated amount of power, it will need to have a power input that exceeds the output. For example, an inverter with a rated output power of 5,000 W and a peak efficiency of 95% requires an input power of 5,263 W to operate at full power.

What is the input voltage of an inverter?

Understanding the inverter voltage is crucial for selecting the right equipment for your power system. Inverter voltage typically falls into three main categories: 12V, 24V, and 48V. These values signify the nominal direct current (DC) input voltage required for the inverter to function optimally. What is the rated input voltage of an inverter?

.

How do you classify an inverter based on its power output?



Using the CEC efficiency, the input power to the inverter must be
 $P_{IN} = P_{OUT} / \text{CEC Efficiency} = 3,300 \text{ W} / 0.945 = 3,492 \text{ W}$ Inverters can be classed according to their power output. The following information is not set in stone, but it gives you an idea of the classifications and general power ranges associated with them.

Why is inverter voltage important?

In the realm of power electronics, the inverter voltage is a critical parameter that dictates its performance, compatibility, and safety. Understanding the intricacies of inverter voltage is essential for anyone seeking a reliable and efficient power supply.



Inverter voltage setting value



Tailoring IEEE 1547 Recommended Smart Inverter Settings ...

The proposed methodology aims, by evaluating the impact of the different inverter settings on the eight FPM categories, to answer the question "What is the best, tailored volt-var smart inverter ...

DEYE Charge and Float Voltages in Lead Acid Mode.

Hi all, I noticed on the DEYE 5KW Hybrid Inverter, the Float Voltage is set without the charge Voltage being available (Use Battery V Mode). I assume the Charge Voltage and ...



How to program Victron Inverter/Chargers in 2024

Learn how to program and configure your Victron Inverter/Chargers for optimal performance with our comprehensive guide.

SolarAssistant, SRNE Inverter and low voltage values in battery settings

Many inverters have firmware that can be



configured to operate the inverter at 12, 24 or 48 volts. Same firmware in each inverter with several "Constants" that define if the ...



Voltage Ride-Through

The inverter has five voltage and time setpoints for low voltage ride-through (LVRT), configurable to the following ranges (measured as Line-ground). Table 1. Inverter LVRT Settings.

Power Quality Response Mode Settings

3) Enable the "Reactive Power Regulation Mode" to "Q(U)" and set the reactive power value. it is only possible to enter the value in % Vars in Sungrow inverter. you get the Volt- Var settings ...



9. Inverter Settings

To set the voltage at which the inverter restarts after low voltage shut-down. - To prevent rapid fluctuation between shut-down and start up, it is recommended that this value be set at least ...



Inverter Specifications and Data Sheet

This is the maximum power the inverter can supply to a load on a steady basis at a specified output voltage. The value is expressed in watts or kilowatts. Peak ...



Inverter Specifications and Data Sheet

This is the maximum power the inverter can supply to a load on a steady basis at a specified output voltage. The value is expressed in watts or kilowatts. Peak output power. This is also ...

Voltage Ride-Through

The inverter has three high voltage ride-through setpoints, with one instantaneous trip voltage setting, configurable to the following ranges (measured as line to neutral):



AC Protect Value Setting Manual

The document provides instructions for setting the AC voltage value on an inverter. It describes connecting a laptop to the inverter via USB to RS232 ...



Configuring the Active Power Mode

If the inverter itself is to control the active power at the point of interconnection, select External setting in the Operating mode active power setting drop-down list, select Apply fallback values ...



9. Inverter Settings

It has a few dip switches on it that I can adjust the Voltage output. Settings include: Ships with 110V as default. My Kill-A-Watt reads around 108V. That seems a little low to me so ...

Conext CL125 Inverter

Objective The goal of this application note is to describe the CL125 inverter's active/reactive power control and Low Voltage/High Voltage Ride-Through (LVRT/HVRT) ...





[Volt/VAR Curve & Ride-Through Settings Guidelines](#)

A Volt/Var curve setting is an autonomous grid support function offered by smart inverters in compliance with the IEEE 1547-2018 standard. Volt/VAR settings are the default autonomous ...

[Power Quality Response Mode Settings](#)

3) Enable the "Reactive Power Regulation Mode" to "QU" and set the reactive power value is only possible to enter the value in % Vars in Sungrow inverter. you get the Volt-Var settings ...



Application Note

These inverters include default settings per country, based on the specific requirements in that country, as well as the ability to configure these settings (settings may have to be configured ...

[Inverter Voltage setting recommendation](#)

It has a few dip switches on it that I can adjust the Voltage output. Settings include: Ships with 110V as default. My Kill-A-Watt reads around 108V. That seems a little low to me so ...

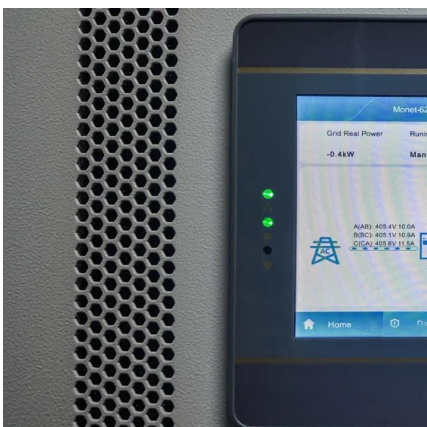


Interpreting inverter datasheet and main parameters , AE 868

Both the maximum voltage value and operating voltage range of an inverter are two main parameters that should be taken into account when stringing the inverter and PV ...

Solar inverter settings

Solar inverter settings If you use solar power and the inverter keeps switching off or reducing output, this means your system is responding to changes in voltage. This does not necessarily ...



Volt/VAR Curve & Ride-Through Settings Guidelines

ous control function for all inverter-based DERs. In "Volt/VAR mode", also referred to as the inverter's autonomous voltage control setting, the reactive power (absorption or injection) of ...



Recommended Settings for Inverters

The inverter shall remain in operation provided that the 10-minute average voltage does not exceed 106% of the nominal voltage and no system faults are detected. If the 10-minute ...



Understanding inverter voltage

Choosing the optimal inverter voltage depends on various factors, including the inverter's design, the power requirements of connected devices, and the available power source.

Regulating Voltage: Recommendations for Smart Inverters

This report from GridLab provides an introduction to voltage regulation concepts, including advantages and disadvantages of various control modes. The authors include ...



044.0069902 ??????????-??-2022

The Smart Energy Manager is located between the inverter, the user load and the grid, and detects the voltage and current of the grid connection point. According to the user's needs and ...



MPI 5KW PLUS Hybrid PV Inverter

er setting of bundled software. When "Emergency power supply control" is enabled and inverter is working in battery mode, it will cut off AC output and remain energy through ...



Contact Us

For catalog requests, pricing, or partnerships, please visit:
<https://www.talbert.co.za>