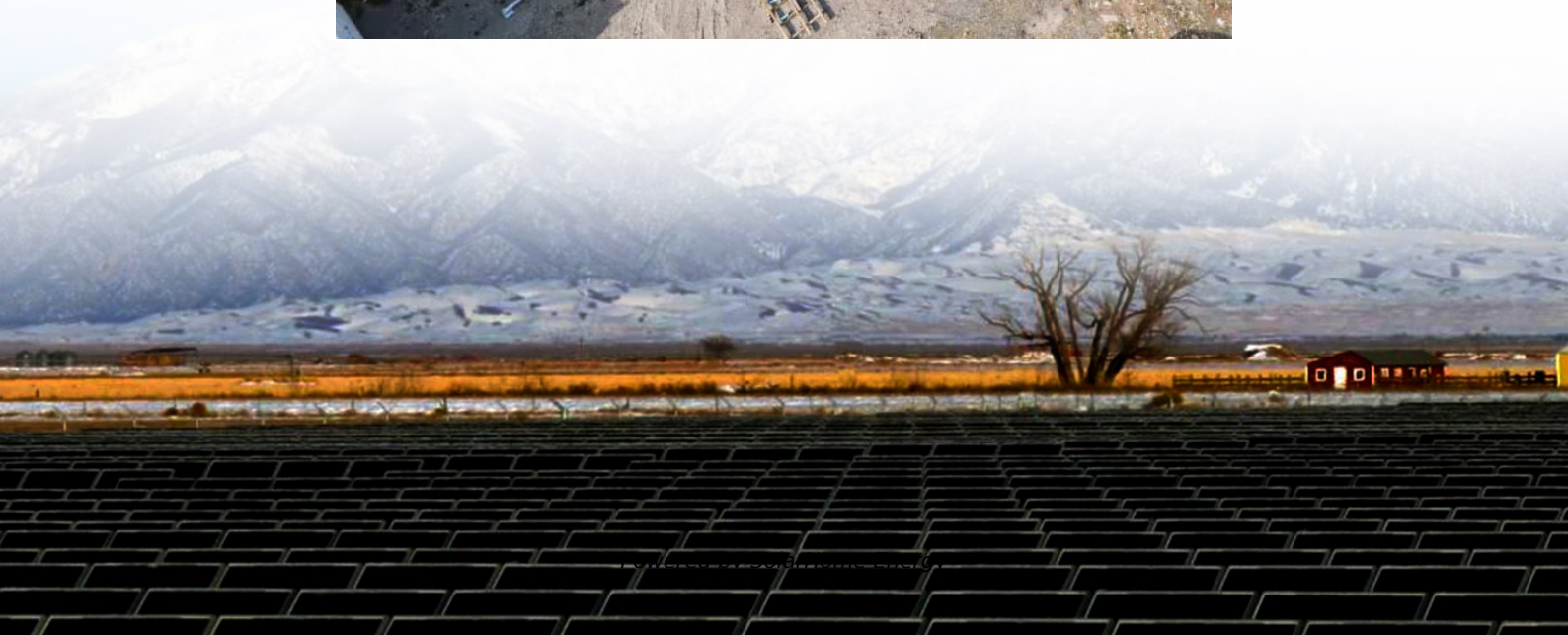


Inverter power limit at noon





Overview

Can an inverter limit power?

Among other things, the inverter can limit power if the grid operator asks (via RRCR or DRED devices), to balance phases, to limit grid exports, or simply because the Power Limit was programmed that way. I have a 7.4 kWh system with a Solaredge SE6000H inverter.

Can maximum inverter power limit grid feed-in?

The values of „maximum inverter power“ have always positive sign. Therefore they only limit the charging values for grid setpoint. They cannot limit the negative values for grid feed in. Using Grid feed-in → Limit system feed-in instead, also cannot solve this problem.

Does maximum inverter power go back if grid setpoint is high?

If „maximum inverter power“ goes back to a higher value, the grid feed in also goes back if grid setpoint is that high. Nevertheless, I expect same behaviour for the “Limit system feed in”. This would allow high inverter power, high self consumption but only low grid feed in.

What is a control state in an inverter?

Each control state is a combination of the following three fields: AC output power limit – limits the inverter’s output power to a certain percentage of its rated power with the range of 0 to 100 (% of nominal active power). CosPhi – sets the ratio of active to reactive power.

Do SolarEdge inverters support advanced grid limitations?

To improve grid stability, many electric utilities are introducing advanced grid limitations, requiring control of the active and reactive power of the inverter by various mechanisms. SolarEdge inverters with CPU version 2.337 and later support these requirements (some features may require later versions; refer to the relevant feature for details).

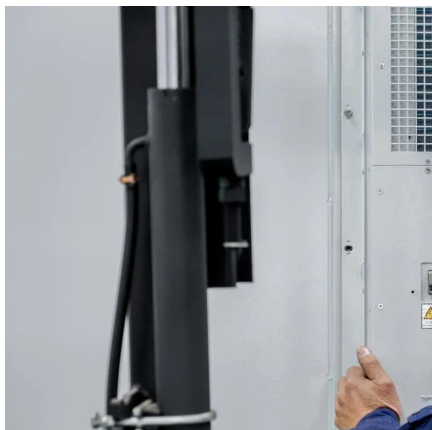


How much power does an inverter produce?

The inverter has a rated AC output of 6 kWh. I would expect to see my system occasionally produce 6 kWh , but it seems to max out at about 5.3 kWh. Today I checked the inverter status via the monitoring app, and noticed the Inverter Status was "Power Limitation". I haven't had much luck figuring out what that means.



Inverter power limit at noon

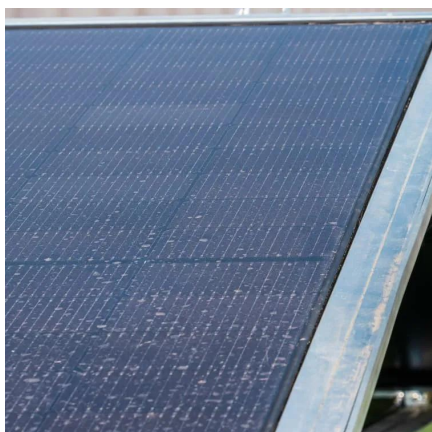
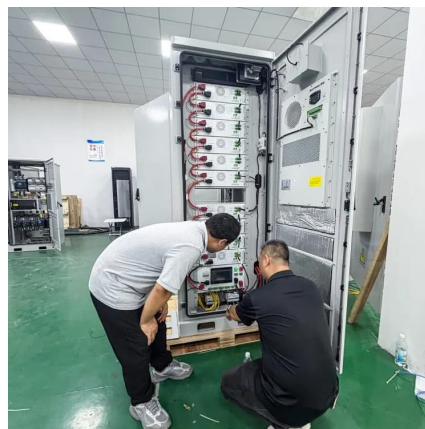


Application Note

One method used for this purpose is limiting the export power: The inverter dynamically adjusts the PV power production in order to ensure that export power to the grid does not exceed a ...

Efficiency Curves Explained: CEC vs EU Weighting in Practice

What an inverter efficiency curve really tells you
An inverter seldom runs at a single operating point. Morning and late afternoon are light-load. Midday pushes toward rated power. ...



Include both power limits: at inverter and at POI

Hello! I am trying to implement power limitations both at the inverter and the POI. While the latter is needed for the contractual injection limit at the POI, the former is needed for ...

I know that switching AC off inverters when they're at peak ...

I know that switching AC off inverters when they're at peak production (at noon) could



damage the inverter. But what about early morning and evening when the power delivered is relatively ...



Configuring Limitation of Active Power Feed-In

If your grid operator only allows a certain active power feed-in into the utility grid, the Sunny Home Manager can monitor and fulfill this requirement by reducing the PV generation of the inverters ...

Max PV input to my 5kva Growatt

Hi I have a Growatt SPF 5000 ES. Spec states Max. PV Array Open Circuit Voltage as 450Vdc. I have ten 605W panels arriving end of July. ...



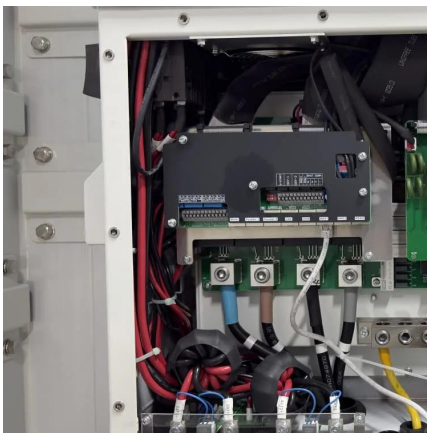
Solaredge Inverter Status: Power Limitation : r/solar

Could it be that the grid power is too high and therefore the inverter throttles back to stay within the limit? For reference in Belgium inverters have to shut down if the grid reaches 253V. You ...



Grid Current Limit with ESS Inverter Power Limit

You're now going to exceed the power limits set so what happens? From my testing it appears that the Inverter Power Limit in ESS is overruled and the Grid Current Limit is ...



Inverter Operating Limits

In normal conditions it will choose the maximum power point (MPPT tracking). However there are limits in power, voltage and current. When attaining one of ...

String inverters, current limiting

For the concerned inputs, the Power limit (determined from the whole inverter capabilities) will displace the operating point towards higher values. Therefore ...



What to do if the solar voltage is high at noon , NenPower

To effectively address high voltage at noon, it's essential to employ a multifaceted approach that combines operational tactics and technological solutions. Load management is ...



Solaredge Inverter Status: Power Limitation : r/solar

Today I checked the inverter status via the monitoring app, and noticed the Inverter Status was "Power Limitation". I haven't had much luck figuring out what that means. I have ...



What Happens If You Overload Your Inverter? Real Dangers and ...

This in-depth guide breaks down the symptoms, dangers, and long-term effects of pushing your inverter too hard. Learn how to calculate load, prevent overload, and fix issues if ...

[Why isn't my solar system producing at full ...](#)

Customers may ask why their system isn't producing maximum power at solar noon. This is often because of a phenomenon called inverter ...





Any explanations for production loss at solar noon?

TL;DR: Is this reduction in peak power a result of my panels getting hotter? I didn't check voltages, so don't know if there was clipping going on at the inverter level. We have ...

Solar Installer is telling me my 10k inverter can supply more

Hoping someone can explain how this would work because it doesn't click for me. He is saying that for my 13k system if I run an appliance, such as a water heater, at the peak production, ...



Solaredge Inverter Status: Power Limitation : r/solar

Today I checked the inverter status via the monitoring app, and noticed the Inverter Status was "Power Limitation". I haven't had much luck figuring out what that means. I have another field, ...

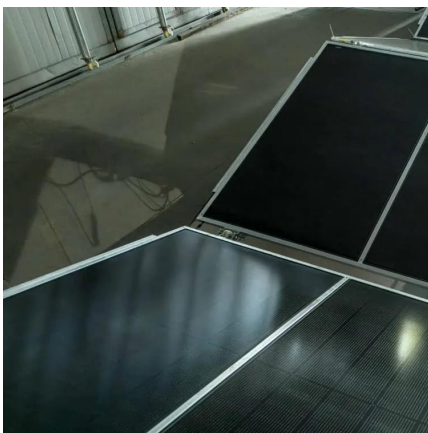
Maximum Inverter Power & Limit Grid Feed In

To avoid triggering the fuse of a week grid connection, I like to limit the maximum inverter power what is available to feed into the grid. The values of „maximum inverter power" ...



Exceeding Inverter Limits

The general rule of thumb is that your inverter Max Input voltage must be greater than $V_{oc} \times 1.2$, otherwise the inverter will shut down (if you are very lucky) or fry (more likely).



[Power Limit Control Strategy for Household ...](#)

To further verify the effectiveness of the proposed power limit control strategy, both simulation and experimental studies are conducted, ...



[Maximum Inverter Power & Limit Grid Feed In](#)

To avoid triggering the fuse of a weak grid connection, I like to limit the maximum inverter power what is available to feed into the grid. The values ...





Inverter Operating Limits

In normal conditions it will choose the maximum power point (MPPT tracking). However there are limits in power, voltage and current. When attaining one of these limits, the inverter will clip the ...



Why isn't my solar system producing at full power--what is inverter

Customers may ask why their system isn't producing maximum power at solar noon. This is often because of a phenomenon called inverter clipping.

"Limit inverter power"

Sometimes I want to limit the power taken from the battery bank and have tried using the "Maximum inverter power" setting, but this doesn't work as expected. The following ...



Power limitation in both, grid and at inverter level

Hello! I am currently trying to understand how to manage the case in which there are two power limitations in my PV Plant: Grid and inverter ...



Configuring the Active Power Mode

In the field Fallback value of the maximum active power enter the value to which the inverter is to limit its nominal power in case of a communication failure to the higher control unit at the end ...



A Guide to Solar Inverters: How They Work & How to ...

Learn what a solar inverter is, how it works, how different types stack up, and how to choose which kind of inverter for your solar project.

Contact Us

For catalog requests, pricing, or partnerships, please visit:
<https://www.talbert.co.za>