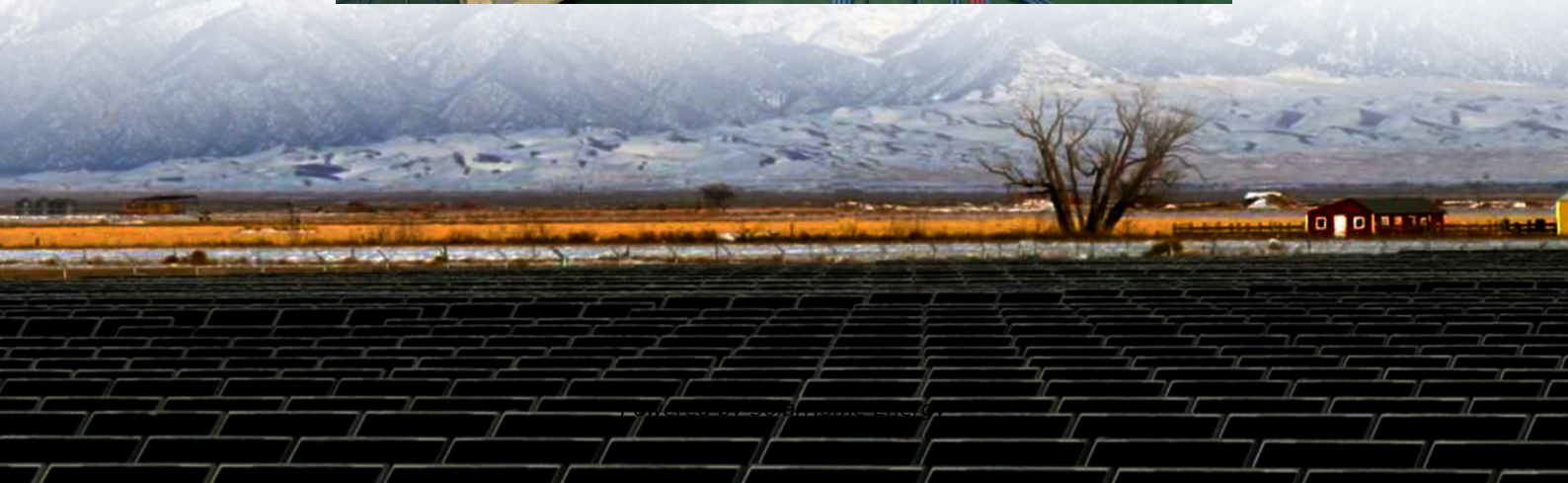


Installation conditions for bifacial monocrystalline photovoltaic panels





Overview

This equipment has been tested and found to comply with the limits applied by the local regulations. These limits are designed to provide reasonable protection against harmful.

NOTE Wear protective headgear, insulating gloves, safety shoes, and insulated tools when installing the modules. Do not install the modules in the rain, snow, or.

NOTE Consult and follow local codes and other applicable laws concerning required permitting as well as installation & inspection requirements, rules, and regulations. Modules and PV systems should be installed by authorized and qualified personnel.

PV modules can produce DC current under illumination, any contact of the exposed metal of the modules connection wires may result in electrical shock or burn. Any contact of 30V or larger DC Voltage can be fatal. In case of no connected load or.

Are bifacial and monocrystalline solar panels better?

When it comes to efficiency, both monocrystalline and bifacial panels have their strengths. Monocrystalline solar panel efficiency rates are around 15-20%, with some high-efficiency models exceeding 22%. They are also suitable for areas with less consistent sunlight.

Are bifacial solar panels better?

Better Performance in Low Light: They perform well even on cloudy days or in low-light conditions. Bifacial solar panels are generally more expensive than other monofacial monocrystalline solar panels. What Are Bifacial Solar Panels?

Bifacial solar panels are a newer innovation in the solar industry.

Do monofacial solar panels require a lot of maintenance?

Monofacial solar panels generally require low maintenance, adding to long-term cost savings. Bifacial solar panels require slightly more complex



maintenance due to their dual-sided nature but still remain relatively low maintenance overall. 4. Installation Monocrystalline Installation:.

What is the general manual for bifacial double glass solar modules?

This general manual provides important safety information relating to the installation, maintenance and handling of bifacial double glass solar modules (BiKu and BiHiKu series). Professional installer must read these guidelines carefully and strictly follow these instructions.

What is a monofacial solar panel & bifacial panel?

Monofacial panels: These solar panels have one side reflecting the sun. The light is reflected on this side and can be generated into energy. The other side has a protective glass sheet facing towards the roof of the building. Bifacial Panels: They absorb sunlight from both ends and generate electricity.

How to install bifacial solar panels?

Panel Placement: Carefully place the bifacial solar panels on the mounting structure according to the predetermined layout and design. Ensure that the panels are aligned correctly based on the orientation and tilt angle determined during the planning phase. Securing Mounting Clamps or Brackets:



Installation conditions for bifacial monocrystalline photovoltaic pan



[Bifacial Vs Monofacial Solar Panels: 6 Differences](#)

Monofacial panels are pocket-friendly, simple, and installed easily, whereas bifacial are newer versions that yield high efficiency but are a bit ...

Renogy 450 Watt Bifacial Monocrystalline Solar Panel ...

Residential Roof Installation Take advantage of the high efficiency of bifacial panels by storing excess energy in batteries for future use or selling it back to ...



PV Module Monocrystalline Bi-Facial Module Installation Guide

This document provides detailed instructions and safety information regarding the installation, electrical connection, and maintenance of the following SolarEdge PV Monocrystalline Bi ...

Bifacial Solar Panels: Working, Advantages & Disadvantages

If you are planning to install solar panels or want to add to your existing system, then you can go



for bifacial PV panels. I have tried my best to explain the construction, working, pros & cons of ...

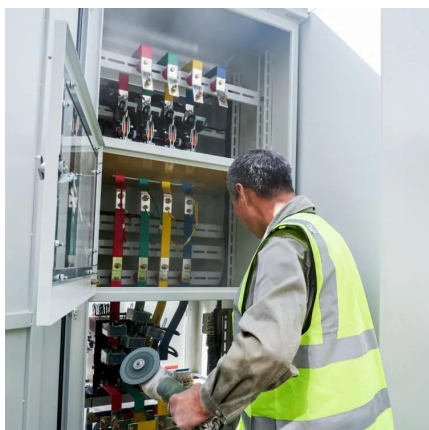


Development and challenges of bifacial photovoltaic technology ...

Bifacial photovoltaic (bPV) modules can both obtain the front and rear light to get higher power output, which has attracted extensive attention and is expected to substitute for ...

A systematic literature review of the bifacial ...

Bifacial modules can absorb radiation on both sides, increasing energy yield per unit area. Climatic conditions, mounting configuration, and ...



Bifacial Solar Panel: What Is It & Its Commercial ...

Bifacial Solar Panel Function, Design & Structure: How it works These double-sided solar panels are designed to harness both direct and ...



550 Watt Bifacial Solar Panels: Complete 2025 Guide & Reviews

3 days ago· 550W bifacial panels typically generate 15-30% more energy than equivalent monofacial panels by capturing light from both sides. In optimal ground-mount installations ...



Installation and Maintenance of Bifacial Solar Panels

To help steer your purchasing decision, we'll cover the three types of bifacial solar panels - monocrystalline, polycrystalline, and thin-film. We'll provide guidance ...

[The Ultimate Guide to Bifacial Solar Panels](#)

Are bifacial solar panels better than traditional panels? Learn all about bifacial solar panels and whether or not they're the right choice for your solar needs in this comprehensive guide.



Bifacial Solar Panels Guide

The property featured a mix of rooftop and ground space, making it ideal for bifacial solar panel installation. The client's primary goals were to maximise ...



Installation and Maintenance of Bifacial Solar Panels

To help steer your purchasing decision, we'll cover the three types of bifacial solar panels - monocrystalline, polycrystalline, and thin-film. We'll provide guidance on how to select the right ...



[JA SOLAR PV MODULES INSTALLATION MANUAL](#)

Installers should follow all safety precautions described in this guide as well as local codes when installing a Module. Installing solar photovoltaic systems requires specialized skills and ...

Cost of Monocrystalline Solar Panels: An In-Depth ...

Unlock pricing secrets with our in-depth guide on the cost of monocrystalline solar panels. Learn installation costs, benefits, and ROI analysis.





Bifacial Solar Panels vs. Monocrystalline: Which Is ...

Discover the differences between bifacial and monocrystalline solar panels. Learn about their efficiency, cost, maintenance, installation, use cases, and future ...

[Bifacial Solar Panel Installation: A Quick Guide](#)

For bifacial solar panel installation, careful consideration of positioning and bifacial solar panel mounting is crucial to maximize energy output. Whether you're installing bifacial ...



[What are monocrystalline solar panels?](#)

What are monocrystalline solar panels? Monocrystalline solar panels are a type of solar panel design that uses a single silicon crystal to capture sunlight and generate energy. ...

[Bifacial vs Monofacial Solar Panels: Working. ...](#)

Learn about the differences, advantages, and disadvantages of monofacial solar panels and bifacial solar panels. Explore which one is better ...



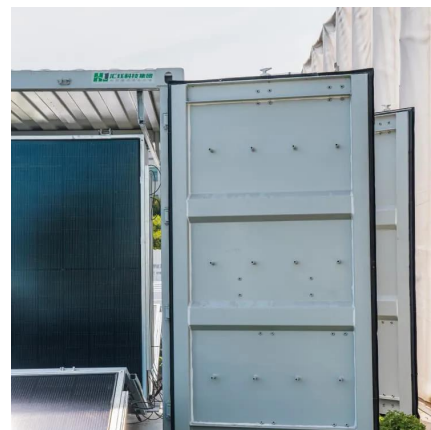
What are the installation requirements for bifacial solar panels on ...

In this blog post, I'll delve into the key considerations and installation requirements for mounting bifacial solar panels on a flat roof. Before installing bifacial solar panels on a flat roof, a ...



Installation_Manual_of_Bifacial_Mod ule

This general manual provides important safety information relating to the installation, maintenance and handling of bifacial double glass solar modules (BiKu and BiHiKu series).



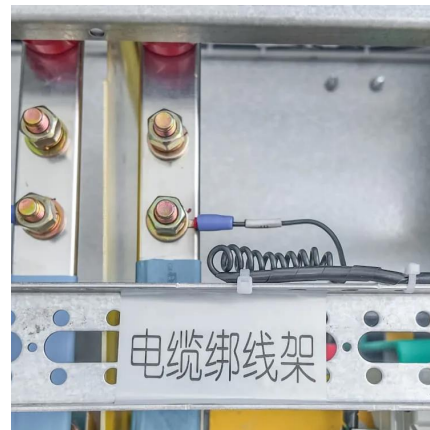
Bifacial Solar Panels vs. Monocrystalline: Which Is Better?

Discover the differences between bifacial and monocrystalline solar panels. Learn about their efficiency, cost, maintenance, installation, use cases, and future trends to determine which ...



Best Practices for Installing Bifacial Solar Panels

Discover the benefits of bifacial solar panels and learn how to optimize their installation for maximum efficiency. This article covers different panel types and essential best practices, ...

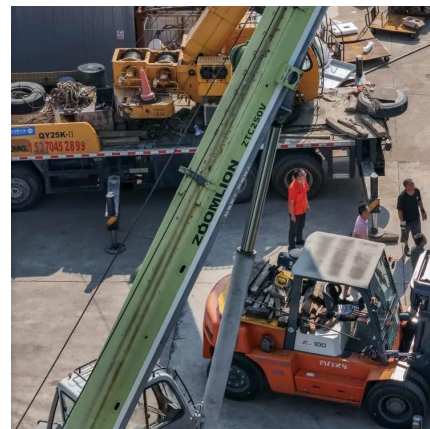


[Bifacial Vs Monofacial Solar Panels: 6 Differences](#)

Monofacial panels are pocket-friendly, simple, and installed easily, whereas bifacial are newer versions that yield high efficiency but are a bit complex. However, the choice you ...

[Bifacial Solar Panel Installation: A Quick Guide](#)

For bifacial solar panel installation, careful consideration of positioning and bifacial solar panel mounting is crucial to maximize energy ...



[Bifacial Solar Panel Installation: A Quick Guide](#)

Bifacial solar panel installation requires careful planning, from site assessment to maintenance, to maximize energy production.



Monocrystalline vs. Polycrystalline Solar Panels - Forbes Home

Unsure about the differences between difference between monocrystalline vs polycrystalline solar panels? Learn the pros and cons of these types of panels.



Bifacial Solar panel installation process: Step by step

Take into account local weather conditions and their potential impact on the solar panel system. Consider factors such as wind snow load and extreme temperatures when ...

What Is a Monocrystalline Solar Panel? Definition, ...

A monocrystalline (mono) solar panel is a type of solar panel that uses solar cells made from a single silicon crystal. The use of a single silicon ...





Contact Us

For catalog requests, pricing, or partnerships, please visit:
<https://www.talbert.co.za>