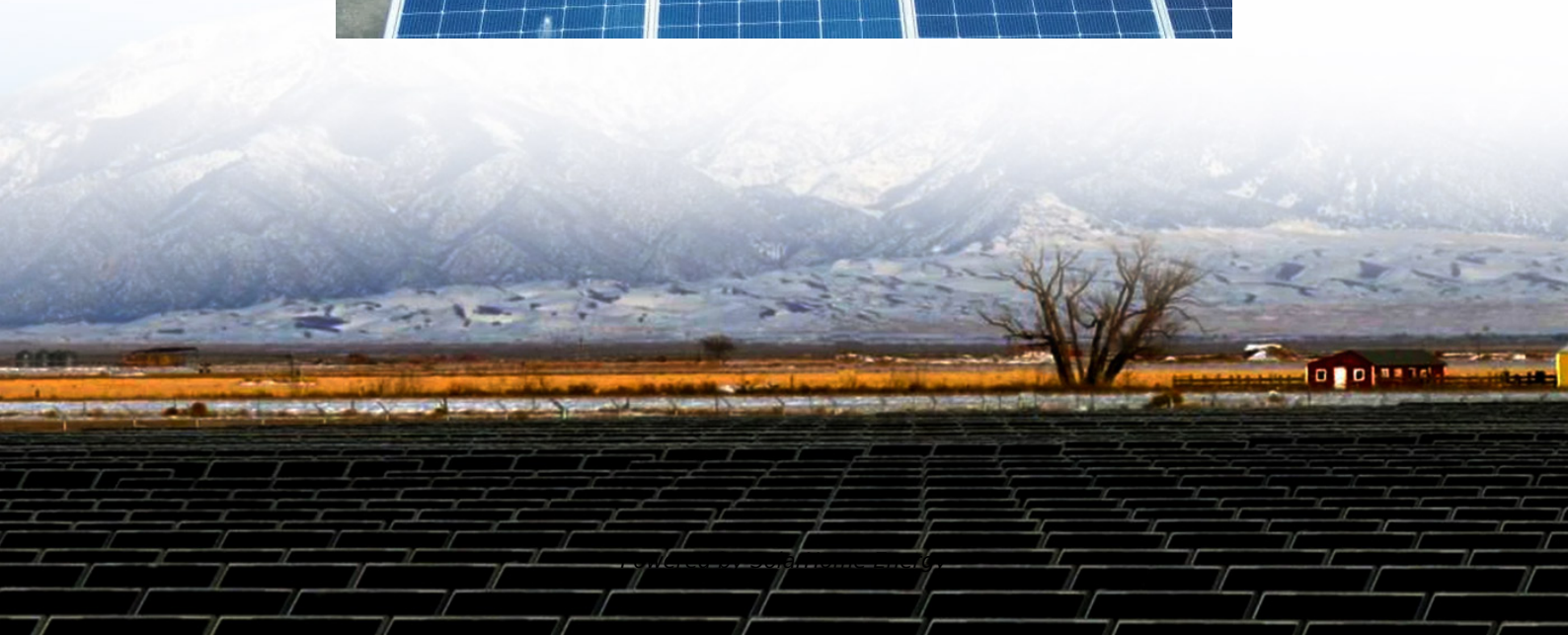


# **Iceland base station power load**





## Overview

---

Who is baseload power Iceland?

At Baseload Power Iceland, we build geothermal heat and power plants for Icelandic communities. As pioneers in our sector, we develop small-scale geothermal heat and power projects that tap into low and medium temperature resources, previously underutilized or ignored. We call it homegrown energy.

How is electricity generated in Iceland?

Nearly all of Iceland's electricity (>99%) is generated from renewables (mainly hydroelectric dams and geothermal). The islands of Grimsey and Flatey rely on diesel as they are not connected to the grid. Over 80% of electricity in Iceland is generated in hydroelectric power stations.

Which hydroelectric power stations are in Iceland?

The hydroelectric power stations, historically all run by Landsvirkjun, are central to the existence of Iceland as an industrialized country. The largest power station by far is Kárahnjúkar Hydropower Plant (690 MW), which generates electricity in the area north of Vatnajökull for the production of aluminum.

How many power stations are there in Iceland?

By 1950, there were 530 small power stations around Iceland. Today, hydroelectric power plays a crucial part in Iceland's society, with 70% of electricity produced by dams.

Who is baseload power?

Our subsidiaries, the Baseload Power companies, build, commission, and operate geothermal heat and power plants funded by Baseload Capital. The U.S. leads the world in geothermal power generation, yet this accounts for less than 1% of the country's total power production.



Does Iceland rely on diesel?

The islands of Grimsey and Flatey rely on diesel as they are not connected to the grid. Over 80% of electricity in Iceland is generated in hydroelectric power stations. The hydroelectric power stations, historically all run by Landsvirkjun, are central to the existence of Iceland as an industrialized country.



## Iceland base station power load

---

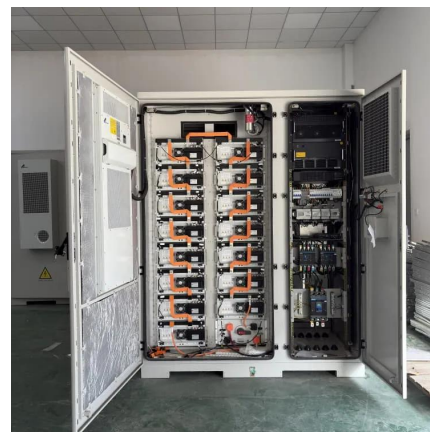


### Baseload Capital

At Baseload Power Iceland, we build geothermal heat and power plants for Icelandic communities. As pioneers in our sector, we develop small-scale geothermal heat and power ...

### Power Consumption Modeling of 5G Multi-Carrier Base ...

However, there is still a need to understand the power consumption behavior of state-of-the-art base station architectures, such as multi-carrier active antenna units (AAUs), as well as the ...



### Renewable Sources

Due to geophysical conditions, Icelandic geothermal power is a reliable base load and a low cost option for electricity generation. Geothermal plants now account for approximately one-quarter ...

### What is Base load?

Learn about base load and why it is important to an electric system. Find out what is peak demand and its future with renewable energy.





## Baseload Power Iceland

Baseload Capital is a specialized investment entity that funds the deployment of heat power worldwide. Our portfolio of companies in Iceland, Japan, Taiwan ...



## Base Load and Peak Load: understanding both concepts

Base load is the minimum level of electricity demand required. Peak load is the time of high demand. Discover examples of both base load and peak load.



## [Baseload Power á Íslandi - Um okkur](#)

Baseload Power á Íslandi vinnur að nýsköpun og uppbyggingu á sviði jarðhitaýtingar - í þágu sveitar og þjóðar. Við nýtum jarðhitaauðlindir við ...



## Baseload Power Iceland , LinkedIn

Baseload Power Iceland , 1,122 followers on LinkedIn. Our mission is simple: we develop and operate sustainable power plants together with local communities. , While Iceland started ...



## Drilling of new well planned for Efri-Reykir geothermal project, Iceland

Baseload Power Iceland and Varmaorka ehf. have announced that they have received all required approval to begin drilling a new well (ER-24) in the Efri-Reykir geothermal ...

## Baseload Power Iceland

Baseload Capital is a specialized investment entity that funds the deployment of heat power worldwide. Our portfolio of companies in Iceland, Japan, Taiwan and the U.S. work with local ...



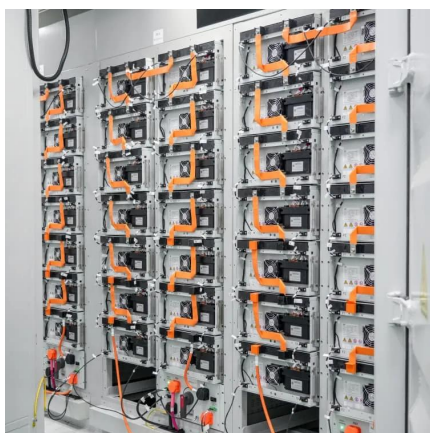
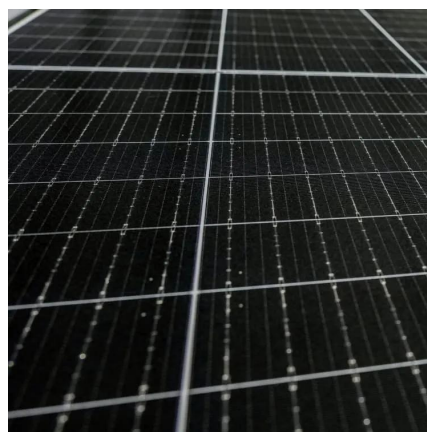
## Baseload Power Iceland

At Baseload Power Iceland, we specialize in unlocking the full potential of Iceland's geothermal resources. As pioneers in our sector, we develop small ...



## Base load power plant

A base load power plant (coal-fired power plant) in Taiwan A base load power plant is a power station that usually provides a continuous supply of electricity throughout the year with some ...



## Base and Peak Load Stations, - ELECTRICAL ...

Base load stations are often powered by sources with low operating costs and long run times, such as coal, nuclear, or hydroelectric power plants. Peak ...

## Baseload Power á Íslandi - Um okkur

Baseload Power á Íslandi vinnur að nýsköpun og uppbyggingu á sviði jarðhitanytingar - í þágu sveitar og þjóðar. Við nýtum jarðhitaauðlindir við lægra hitastig en hefðbundnar virkjanir á ...







## Microsoft PowerPoint

Station Load curve Meeting the Load:  
Interconnecting two power stations, the more efficient plant is assigned the base load, while the less efficient one is assigned the peak load.

## Measurements and Modelling of Base Station Power ...

The real data in terms of the power consumption and traffic load have been obtained from continuous measurements performed on a fully operated base station site.



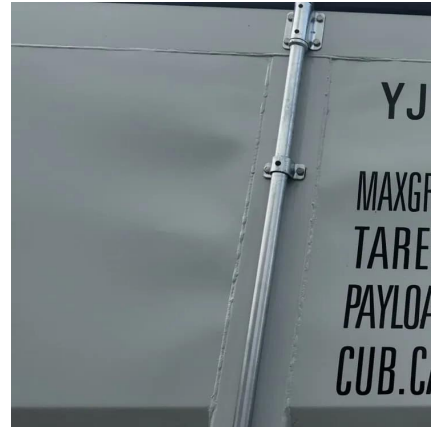
## Renewable Sources

Due to geophysical conditions, Icelandic geothermal power is a reliable base load and a low cost option for electricity generation. Geothermal plants now ...

## Base load , Important Energy for Continuous Power Supply

Base load power guarantees stable energy supply , Reliable Supports energy security & system stability Grid backbone Learn more.





## Baseload Capital

At Baseload Power Iceland, we build geothermal heat and power plants for Icelandic communities. As pioneers in our sector, ...



## Power Plants , Askja Energy

The following list includes all hydro- and geothermal power stations in Iceland, with installed power of 10 MW or more. Dozens of smaller hydropower stations are not included in this list.



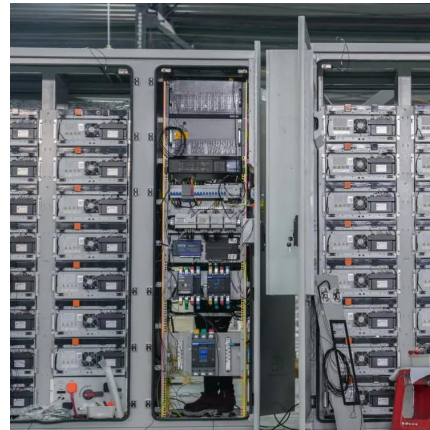
## Baseload Power Iceland

At Baseload Power Iceland, we specialize in unlocking the full potential of Iceland's geothermal resources. As pioneers in our sector, we develop small-scale geothermal heat and power ...



## Baseload Power Iceland Secures EUR53 Million in Series B Funding ...

This strategic funding will enable Baseload Power to focus on developing small-scale, zero-emissions binary power plants that utilize geothermal fluids, an initiative that paves ...



## Power stations

We operate fifteen hydropower stations, three geothermal power stations and two wind turbines for research purposes in five operating areas in Iceland.

## Steingrimsstod Hydroelectric Power Station Iceland

Steingrimsstod Hydroelectric Power Station Iceland is located at Sudhurland, Iceland. Location coordinates are: Latitude= 64.1295, Longitude= -21.0253. This infrastructure ...



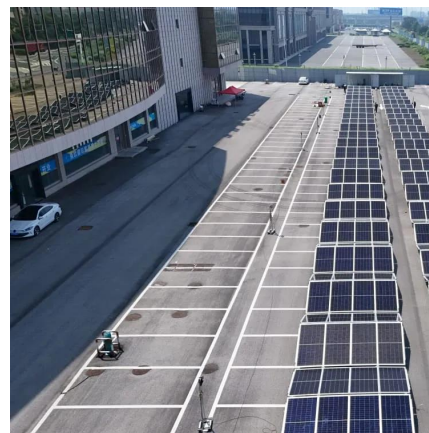
## [Reykjanes Geothermal CHP Power Station Iceland](#)

Reykjanes Geothermal CHP Power Station Iceland is located at Southern Peninsula, Iceland. Location coordinates are: Latitude= 63.825, Longitude= -22.6846. This infrastructure is of ...



## BASE AND PEAK LOAD ELECTRICITY

Base load Base load power stations, largely coal-fired in South Africa, are designed to operate continuously at a steady load. They require a minimum period of 8 hours from cold start-up to ...



## List of power stations in Iceland

Over 80% of electricity in Iceland is generated in hydroelectric power stations. The hydroelectric power stations, historically all run by Landsvirkjun, are central to the existence of Iceland as an ...

## Drilling of new well planned for Efri-Reykir geothermal ...

The partnership of Baseload Capital Iceland and Varmaorka has received the approval for drilling of well ER-24 which will support geothermal ...





## Drilling of new well planned for Efri-Reykir geothermal ...

Baseload Power Iceland and Varmaorka ehf. have announced that they have received all required approval to begin drilling a new well (ER-24) in ...

## Contact Us

---

For catalog requests, pricing, or partnerships, please visit:  
<https://www.talbert.co.za>