

Hungarian photovoltaic roof sloping photovoltaic panels





Overview

Why do solar panels lie flat against the roof?

This angle allows solar panels to lie flat against the roof without requiring additional adjustments, making it easier to install standard racking systems. At this angle, solar panels can capture a substantial amount of sunlight throughout the year, ensuring the highest possible energy output for your solar system.

What is the optimal tilt angle of photovoltaic solar panels?

The optimal tilt angle of photovoltaic solar panels is that the surface of the solar panel faces the Sun perpendicularly. However, the angle of incidence of solar radiation varies during the day and during different times of the year.

How does the slope of a roof affect solar panels?

The slope or pitch of a roof plays a significant role in determining the most efficient installation of solar panels. Roof pitch is usually measured in degrees, and it indicates the angle of the roof relative to the ground. The average roof slope can range between 30° and 40°. Let's explore how this affects solar panel installations:

What is a good roof slope for solar panels?

Roof pitch is usually measured in degrees, and it indicates the angle of the roof relative to the ground. The average roof slope can range between 30° and 40°. Let's explore how this affects solar panel installations: For most residential properties, a roof with a slope between 30° and 40° is considered optimal for solar panel installation.

What is the ideal inclination of photovoltaic panels?

The ideal inclination of the photovoltaic panels depends on the latitude in which we are, the time of year in which you want to use it, and whether or not you have your own generator set. In winter, the optimum angle is close to 50°.



and in summer, the ideal angle is around 15 degrees. However, some conditions can alter this premise.

How does roof space affect solar panels?

The roof space will determine the available surface in which the property defines to locate the PV panels. It will be necessary to ensure that this surface is an easily accessible space for maintenance operations, while this space must be protected from acts of vandalism or falling objects. How does shading affect solar panels?



Hungarian photovoltaic roof sloping photovoltaic panels



New Regulations on Solar Panel Placement: MNNSZ ...

The Hungarian Government's Ministry of Construction and Transportation has introduced a draft regulation that proposes significant ...

Distribution of azimuth angles of Hungarian residential PV ...

Hungary has seen rapid growth in residential rooftop photovoltaic (PV) systems, with installations reaching 2.65 GW- over 35% of the country's total PV capacity in 2023.



The Ultimate Guide To Flat Roof Solar Panels , Deege ...

The ideal pitch for a Solar Panel is around 30 degrees off the horizontal. Simply because this allows the panels to gain more exposure from ...

Frequently asked questions about fixing photovoltaic panels on ...

The most frequently asked questions we receive about installing and fixing solar panels on roofs,



sheds, roofs and ground-mounted photovoltaic systems. Contact us now in complete ...



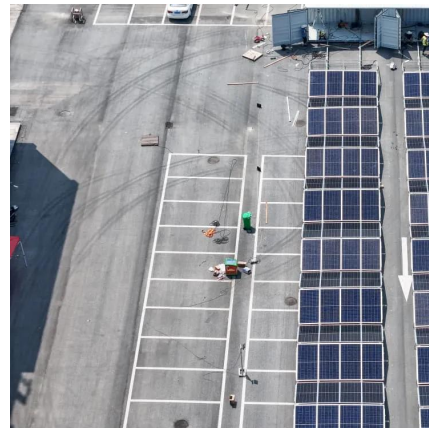
CMS CEE Expert Guide to Solar Panel Installation in Hungary

Are you looking for information about the Solar Panel Installation in Hungary? Read Expert Guide to learn more!



Solar can be installed on uneven, hilly sites with relative ease

When SunModo works a hilly site, the company uses its SunBeam system, a ground-mounted rack, installing clusters of four-by-four landscape panels. Each four-by-four ...



[What Is the Best Roof Pitch for Solar Panels?](#)

Even in less-than-ideal conditions, such as cloudy weather, photovoltaic panels can still operate, producing 10 to 25% of their normal ...



How to Choose a Photovoltaic Structure for a Sloped Roof?

Choosing the right support structure for PV panels on a sloped roof is a crucial step in the installation process. The structure should be tailored to the roof's characteristics, made from ...



[Roof Pitch for Solar Panels Calculator](#)

For most residential properties, a roof with a slope between 30° and 40° is considered optimal for solar panel installation. This angle allows solar panels ...

Fully integrated solar roof fabric Velario wins more ...

A fully-integrated solar roof, installed on the UK's first Passivhaus Premium-certified home and able to generate more than four times the energy ...



Solar panel inclination angle, location and orientation

Optimization of the inclination, orientation and location of photovoltaic solar panels and solar collectors in a solar installation to maximize the use of renewable energy.



What Is the Best Roof Design for Solar Panels and What If Mine's ...

This article explores how your roof can effect solar production and what to do if you don't have the best roof design for solar panels.

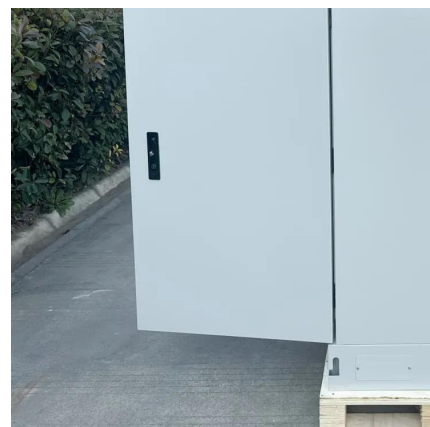


[Rooftop Solar Panel Mounting Structure Design](#)

Compare elevated solar panel structure, roof mounted solar structure & more. Find the best solar structure for your roof based on space, design & material.

Solar panel inclination angle, location and orientation

With this table at hand, you have a ready reference to understand the optimal tilt angles for solar panels across the major cities in the European Union. ...



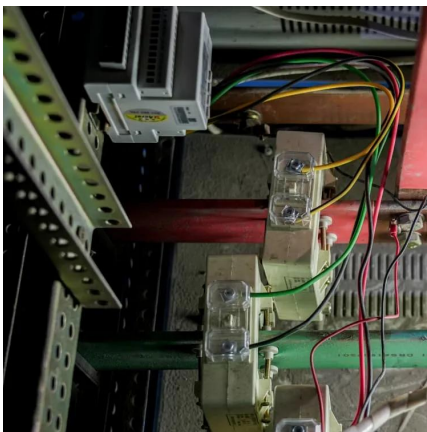


Photovoltaic roof: types, advantages and which one to choose

The photovoltaic roof is now one of the most effective solutions for producing renewable energy at home, reducing utility costs and increasing the value of the property. ...

Installation of Photovoltaic Panels on the ground, roof, balcony or

Panels are arranged in rows, with mounting adapted to the roofing material. Although technically more challenging than flat roof installations, sloped roofs offer easier maintenance, as rainfall ...



Hungary solar pv grid system

Solar System Installers in Hungary Hungarian solar panel installers - showing companies in Hungary that undertake solar panel installation, including rooftop and standalone solar ...

Rules for Rooftop Solar

The PV system is looked at essentially like cladding, and thus the wind-load table for cladding is what is used to determine the load the panel system must resist depending on factors such as ...



Terrán Generon

One unique feature of Generon is the integration of the photovoltaic cells directly onto the surface of the concrete roof tiles - an aesthetic and easy to use way ...



Distribution of azimuth angles of Hungarian residential PV systems ...

Hungary has seen rapid growth in residential rooftop photovoltaic (PV) systems, with installations reaching 2.65 GW- over 35% of the country's total PV capacity in 2023.



[Roof Pitch for Solar Panels Calculator](#)

For most residential properties, a roof with a slope between 30° and 40° is considered optimal for solar panel installation. This angle allows solar panels to lie flat against the roof without ...





Optimal Tilt Angle for Solar Panels by EU Cities

With this table at hand, you have a ready reference to understand the optimal tilt angles for solar panels across the major cities in the European Union. Remember, these angles are estimates ...

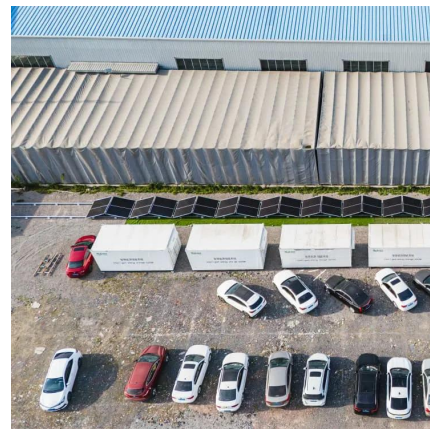


Green Roofs and Solar Energy , ZinCo Green Roof ...

The slope of the panels directs more rainwater to the walkways between the solar panel rows, so that an increased plant growth can be expected there. South ...

Terrán Generon

One unique feature of Generon is the integration of the photovoltaic cells directly onto the surface of the concrete roof tiles - an aesthetic and easy to use way to reduce energy costs.



How to Choose a Photovoltaic Structure for a Sloped ...

Choosing the right support structure for PV panels on a sloped roof is a crucial step in the installation process. The structure should be tailored to the roof's ...



Rooftop Solar PV Systems: Definition, and Different ...

A rooftop solar photovoltaic (PV) system uses solar panels mounted on the roof of a building to convert sunlight into electricity. Rooftop ...



[Solar Panels on a Flat Roof: 5 Things to Know](#)

Can you install solar panels on a flat roof? Yes, you can successfully install solar panels on the flat roof of your home or business. ...

Solar Panels For Flat Roofs: Are They Right for You?

A flat roof solar panel installation is entirely feasible and worth it. You'll just need more racking equipment to ensure your panels face south and ...





New Regulations on Solar Panel Placement: MNNSZ Response

The Hungarian Government's Ministry of Construction and Transportation has introduced a draft regulation that proposes significant restrictions on the installation of solar ...

What is the slope of solar photovoltaic panels?

The slope of solar photovoltaic panels is critical for optimizing energy capture and efficiency. 1. The optimal angle for solar panels varies ...



Contact Us

For catalog requests, pricing, or partnerships, please visit:
<https://www.talbert.co.za>