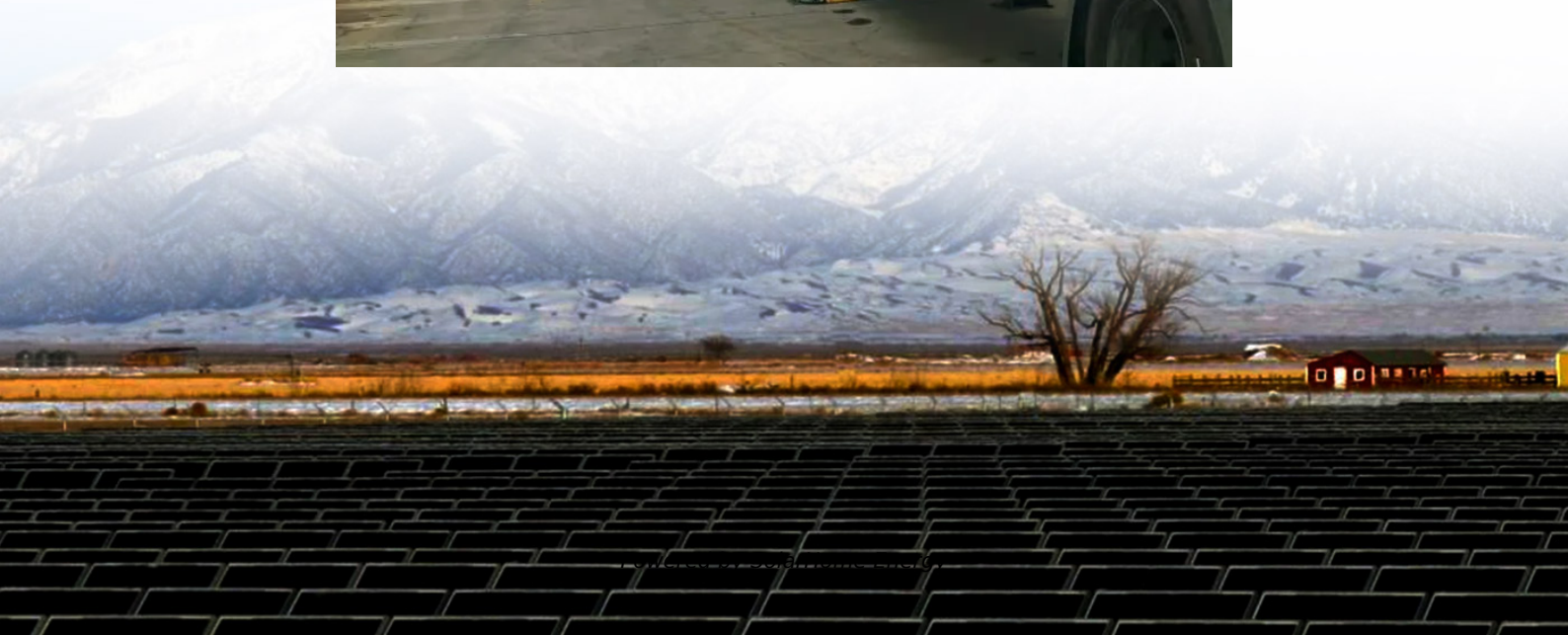


Huawei solar base station installation





Overview

Does Huawei offer fusion solar certification?

Huawei provide FusionSolar certification and professional PV installation training and guidance manuals, videos, knowledge and other materials for PV communities, register installation maps, download installation manuals, watch online PV installation videos, and enjoy point exchange gifts.

How to properly install a solar system?

Here's a step-by-step guide on how to properly install a solar system: 1. Set Up Scaffolding: To ensure a safe installation, erecting scaffolding for installers as they work on the roof is essential. This is a preliminary step to prepare the area for installation. 2.

What is a solar installation system?

Solar installation system presents a sustainable and environmentally friendly solution to energy needs for residential, commercial, and industrial projects.

How nstream solar modules can be installed on a flat roof?

nstream solar modules. The system can be assembled and placed directly onto the flat roof with-out the need of drilling holes into the mounting surface, which ultimately eliminates the risk of water leakage through the roof. LegBALLAST SYSTEM The Ballast Mounting Solution is suitable for.

What should I consider before installing a solar power system?

The first key consideration before installing a solar power system is evaluating your energy needs. An accurate assessment of your home or office's energy consumption helps to choose the correct solar system size. Analyzing your utility bill over the past 12 months can give you an estimate of your annual power consumption.



Huawei solar base station installation

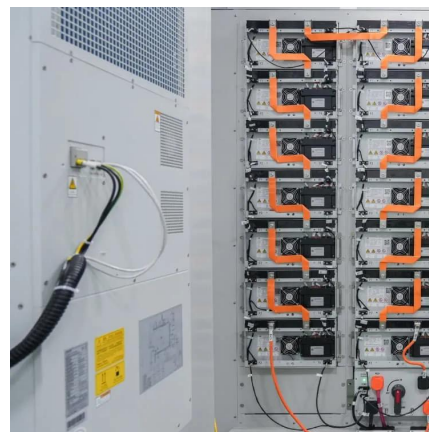


Jazz Partners with Huawei to Solarize 1,000 Telecom ...

Jazz has partnered with Huawei to deploy solar power at 1,000 telecom sites nationwide. This initiative, powered by Huawei's iSolar ...

PRODUCT CATALOGUE 2023

The system can be assembled and placed directly onto the flat roof with-out the need of drilling holes into the mounting surface, which ultimately eliminates the risk of water leakage through ...



From Panel to Power: Solar Installation System Guide

This article delves into various aspects, including components of a solar installation system, major considerations before embarking on the ...



Power-M-5/10/15/20/25/30

Power-M works as an all-in-one energy supplier to fight off blackouts with power generation, energy storage, and seamless switchover in ...



[iSitePower-M \(MAP05A1, MAB05B1\) User Manual](#)

This manual provides guidance on using, installing, and maintaining Huawei iSitePower-M devices for optimal performance and reliability.



Smart PV Management System for Installers , HUAWEI Smart PV ...

Discover the Huawei Smart PV Management System designed for installers. Streamline solar project installation and management with advanced tools and features.



Huawei rolls out ultrafast EV chargers in China, taking ...

Most chargers use cooling fans. While Huawei's mainstay business is telecommunications, it is also involved in cellular base stations ...





HUAWEI commissioning

In the video, we show the steps you need to take to set up a complex Huawei solar system (inverter, battery, backup box). [more](#)



HUAWEI DBS3900 Dual-Mode Base Station Hardware ...

DBS3900 Dual-Mode Base Station is the fourth generation base station developed by Huawei. It features a multi-mode modular design and supports three working modes: GSM mode, ...

Huawei Inverter On Grid Quick Installation in 3 mins

huawei inverter installation Smart Energy Controller (Three Phase)HUAWEI INVERTER SUN2000 Smart PV Solar inverters are generally considered as best Residenti



STS

STS- (3000K 6000K)-H1 Smart Transformer Station Installation Guide - Free download as PDF File (.pdf), Text File (.txt) or read online for free.



Installation Guide

This document describes how to install the JUPITER-3000K-H1, JUPITER-6000K-H1, and JUPITER-9000K-H1 Smart Transformer Stations (STSs). Before installing an STS, read ...

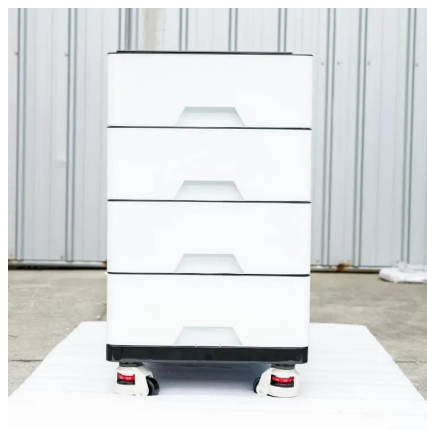


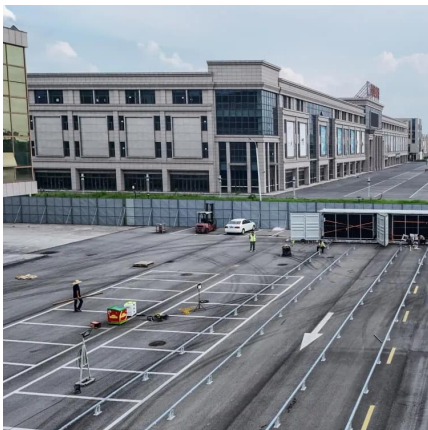
From Panel to Power: Solar Installation System Guide

This article delves into various aspects, including components of a solar installation system, major considerations before embarking on the installation process, a detailed step-by ...

Huawei Solar Inverter Configuration Guide , Easy Setup Tutorial

Need help setting up your Huawei inverter? This step-by-step guide walks you through the configuration process, ensuring smooth installation and optimal performance.





Base Station Backhaul Microwave Solution , Huawei Enterprise

Based on leading wireless, transmission, and datacom technologies, Huawei base station backhaul microwave solution provides fiber-level broadband wireless backhaul capabilities, ...

User Manual

Do not install, use, or operate outdoor equipment and cables (including but not limited to moving equipment, operating equipment and cables, inserting connectors to or removing connectors ...



[Complete Guide: 650 kW Grid-Tied Solar System ...](#)

In this video, we cover everything from initial setup to final connections, featuring Huawei inverters and JA panels.

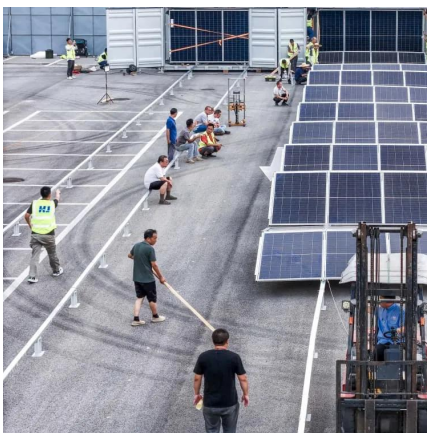
HUAWEI Smart PV Community

Huawei provide FusionSolar certification and professional PV installation training and guidance manuals, videos, knowledge and other materials for PV communities, register installation ...



Solar Installation System: The Future of Eco-Friendly Energy

Install Solar Panel Mounts: This stage involves installing the base that will support the solar panels. The mounting structure should be set at an appropriate tilt, usually between ...



[iSitePower-M \(MAP05A1, MAB05B1\) Quick Guide](#)

This quick guide provides essential information on Huawei's iSitePower-M system, including installation, operation, and maintenance.



Rural Star Solution: 28 Nov 2018 Huawei Technologies ...

Rural Star is a solution for rural coverage using LTE relay transmission. It uses a donor eNodeB and relay base transmission stations connected by antennas and poles up to ...





Solar powered cellular base stations: current scenario, issues and

Cellular base stations powered by renewable energy sources such as solar power have emerged as one of the promising solutions to these issues. This article presents an ...



Wall-mounted Installation

This document describes the SUN2000-8KTL-M2, SUN2000-10KTL-M2, SUN2000-12KTL-M2, SUN2000-15KTL-M2, SUN2000-17KTL-M2 and SUN2000-20KTL-M2 in terms of their ...

SUN2000-(25KTL, 30KTL)-US Quick Installation Guide 0

Before installing the device, read the SUN2000-(25KTL, 30KTL)-US User Manual for knowledge of product information and safety precautions.



PRODUCT CATALOGUE 2023

The Tilt Systems are quick and easy to install, allowing solar panels to be installed in the angle ranges from 10 to 15 degrees, 15 to 30 de-grees and 30 to 60 degrees.



Complete Guide: 650 kW Grid-Tied Solar System Installation with Huawei

In this video, we cover everything from initial setup to final connections, featuring Huawei inverters and JA panels.



[Smart PV Management System for Installers](#)

Discover the Huawei Smart PV Management System designed for installers. Streamline solar project installation and management with advanced tools and ...



Contact Us

For catalog requests, pricing, or partnerships, please visit:
<https://www.talbert.co.za>