

Huawei single-sided double-glass modules





Overview

Are double-glass modules better than single-sided glass panels?

However, advancements in glass technology have mitigated this issue to some extent. Weight: Double-glass modules are generally heavier than single-sided glass panels due to the additional glass layer. Applications: Double-glass modules are well-suited for environments with harsh weather conditions, high humidity, or corrosive elements.

What is the difference between double-glass solar panels and single-sided solar panels?

The main difference between double-glass photovoltaic modules and single-sided glass solar panels lies in their construction and design, which can impact their durability, performance, and applications. Construction: Double-glass modules consist of two layers of glass sandwiching the solar cells and other components.

How do double glass solar panels work?

Construction: Double-glass modules consist of two layers of glass sandwiching the solar cells and other components. The glass layers are sealed together, encapsulating the solar cells and protecting them from environmental factors.

What is the difference between Raytech double glass solar modules?

Whereas for Raytech double-glass solar modules, with the increased strength brought by two layers of glass, a lot less deformation will happen in the solar cells, the possibility of microcracks formed on the solar cells will decrease significantly.

What is a dual-glass module?

Dual-glass type modules (also called double glass or glass-glass) are made up of two glass surfaces, on the front and on the rear with a thickness of 2.0 mm each. Some manufacturers, in order to reduce the weight of the modules,



have opted for a thickness of 1.6 mm. DualSun has chosen to stay with a thickness of 2.0 mm for reasons explained below.

What is a single sided glass panel?

Weight: Single-sided glass panels are lighter than double-glass modules, which can be advantageous for certain installation scenarios. **Applications:** Single-sided glass panels are commonly used in residential and smaller commercial installations where aesthetics and cost-effectiveness are important factors.



Huawei single-sided double-glass modules



The Difference Between Double-glass and Single-sided Glass ...

The main difference between double-glass photovoltaic modules and single-sided glass solar panels lies in their construction and design, which can impact their durability, ...

What is the difference between single-sided and double-sided ...

Memory modules play a critical role in the performance of computers, and choosing the right type can impact overall efficiency. Two common terms you'll encounter when selecting memory are ...



Double the strengths, double the benefits

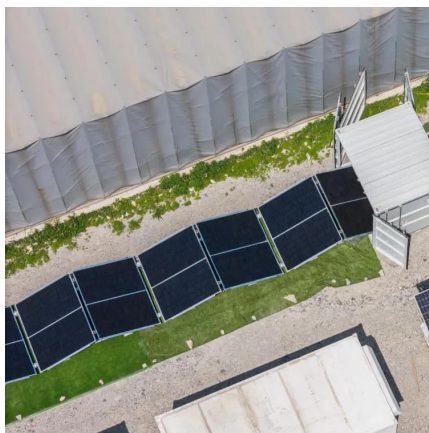
Generally, the front and back glass layers in these modules have the same thickness, contributing to their balanced structural integrity. This design not only enhances the ...

Double glass solar module , Maysun Solar

Their dual-glass structure ensures superior durability, extends system lifespan, and reduces



maintenance costs. With glass-glass modules, you benefit not ...



Double the strengths, double the benefits

Generally, the front and back glass layers in these modules have the same thickness, contributing to their balanced structural integrity. This ...

What are the differences between single-glass and double-glass ...

As a high-quality manufacturer and supplier of Double Glass Solar Panels, solar modules, and Solar Panels, we provide you with high-quality products and PV module ...



What are the differences between single-glass and ...

As a high-quality manufacturer and supplier of Double Glass Solar Panels, solar modules, and Solar Panels, we provide you with high-quality ...



Double glass solar module , Maysun Solar

Why Choose Double Glass Solar Modules? Glass-glass solar modules (bifacial modules) increase energy production by approximately 2% to 5% compared to ...

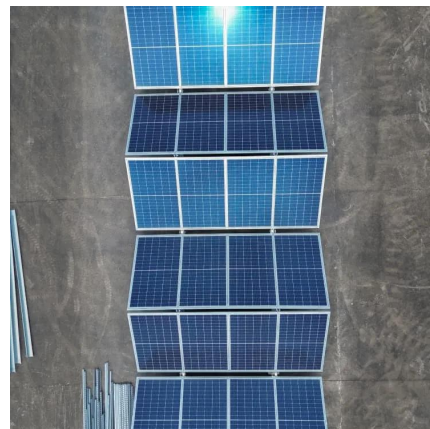


Double glass solar module , Maysun Solar

Their dual-glass structure ensures superior durability, extends system lifespan, and reduces maintenance costs. With glass-glass modules, you benefit not only from enhanced efficiency ...

Double the strengths, double the benefits

In the ever-evolving world of photovoltaic technology, double glass solar modules are emerging as a game-changer. By encapsulating solar cells ...



How durable is the double-sided double-glass n-type ...

In ground photovoltaic power stations, double-sided modules can reduce land occupation and increase power generation per unit area
summary, double-sided double-glass n-type ...



Single Vs. Double Glass Solar Panels

To add a bit of complexity in purchase choices for solar panel buyers, there can be a toss-up between single and double/dual glass panels. So, which is better? Back in November we ...



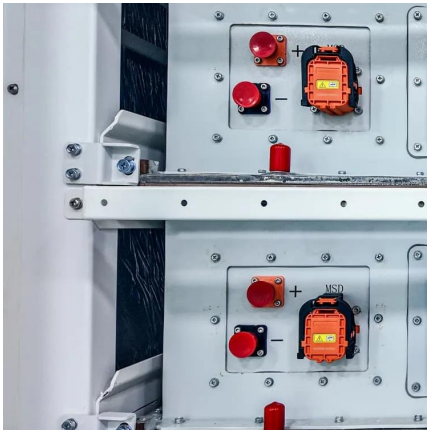
Single-glass versus double-glass: a deep dive into module ...

Double-glass modules, with their performance in the face of salt mist, high temperatures and high humidity, have won the market's favour. However, this trend is not ...

Study on the comprehensive ratio of power generation capacity of ...

This paper conducted a comparative power generation capability test of N-type bifacial double-glass photovoltaic modules under multiple scenarios in Yinchuan, Ningxia (north ...





What are Double Glass Solar Panels?

To add a bit of complexity in purchase choices for solar panel buyers, there can be a toss-up between single and double/dual glass panels. So, which is ...

The Future of Bifacial Modules: Why Bifacial Glass to

Power Generation: Double-sided single-glass modules with transparent backsheet have an average 1.29% higher power generation than double-sided double-glass modules.



Difference between single glass and double glass ...

In contrast to single glass panels, double glass solar panel, or bifacial solar panels, have taken fame for their new design. These panels have ...

TOPCon Bifacial Single Glass Encapsulation Solution

single glass modules with fully-tempered front glass have higher impact resistance and mechanical strength, and are less possibility to burst when used outdoors;



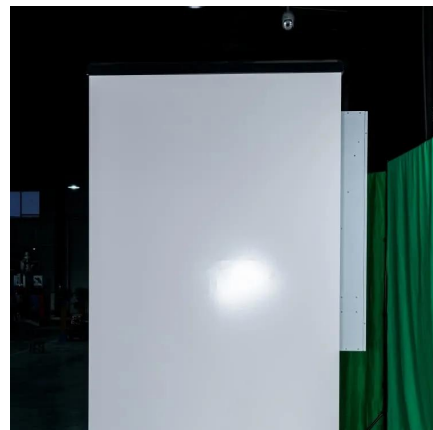
What are Double Glass Solar Panels?

Double-glass solar modules are made up of two layers of tempered glass that cover both sides of the solar panel. As snow accumulates on a typical solar panel or people ...



?????

Double-sided Power Generation The dual-glass module has a double-sided ratio of up to 80% and a power generation gain of 5%-25% on the back side.



The Performance of Double Glass Photovoltaic Modules under ...

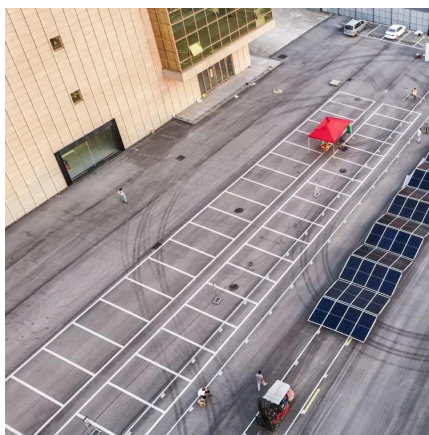
In recent years, with the rapid development of the photovoltaic industry, double glass module as a high reliability and high weather resistance product is favored by many PV ...





Why Dual-Glass is the best solar panel technology for ...

This is reflected in the extended power warranty of 30 years that Trina Solar grants for all Vertex dual-glass modules, for peace of mind of ...



Reliability & Value Analysis of n-type TOPCon Bifacial Single ...

Single-glass module can release acetic acid produced by the encapsulation film inside the module because of its breathing function, and the outdoor use reliability is better;

Double-glass PV modules with silicone encapsulation

These modules use a sheet of tempered glass at the rear of the module instead of the conventional polymer-based backsheet. There are several reasons why this structure is ...



Difference between Single-glass and Double-glass ...

Single-glass Solar Modules vs. Double-glass Solar Modules The traditional single-glass solar panels or modules had just a single layer of glass at the ...



Current Status And Future Development Trends of ...

In the future, the technological development and market share trends of single- and double-sided modules may have a certain impact on the ...



What are the advantages of dual-glass Dualsun modules?

Double glass modules, due to the hermeticity of their structure, present less risk of PID. This phenomenon can be avoided by the use of an appropriate encapsulation material and by ...

For N-type Bifacial Technology, Dual Glass Structure is Preferred

A glass/backsheet structure works well with conventional PERC modules due to its lightweight, whereas a glass/glass structure has the potential to generate additional energy for ...





Contact Us

For catalog requests, pricing, or partnerships, please visit:
<https://www.talbert.co.za>