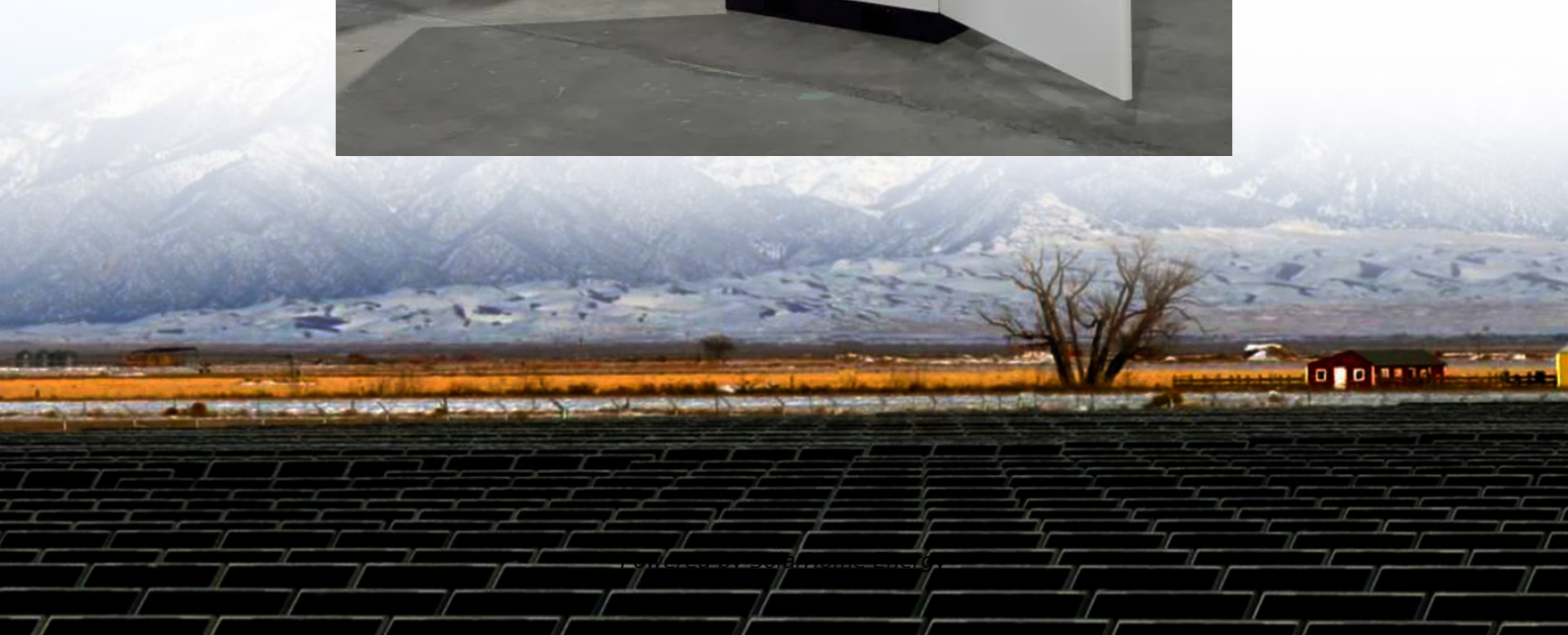


# **Huawei Tong Communication Base Station Wind and Solar Complementary Module**





## Huawei Tong Communication Base Station Wind and Solar Complem

---



### 5kw Wind-Solar Complementary System for Communication Base Station

5kw Wind-Solar Complementary System for Communication Base Station, Find Details and Price about 5kw Hybrid Solar Wind System 5kw Hybrid Solar Wind System for Home Use from 5kw ...

### Huawei FusionSolar Smart PV Solution

Huawei FusionSolar provides new generation string inverters with smart management technology to create a fully digitalized Smart PV Solution.



### Telecom Energy Solution

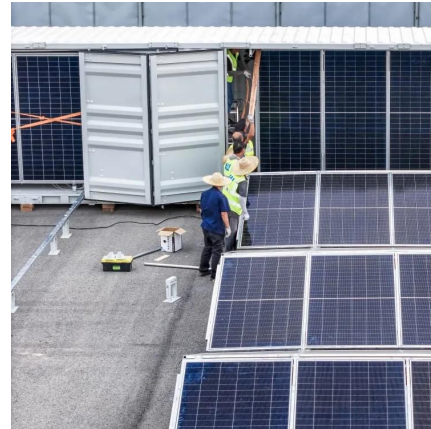
Huawei telecom power products adapt easily to a variety of telecommunication networks. We also offer integrated power solutions for intelligent video surveillance systems and solutions for site ...

### Telecom Base Station PV Power Generation System Solution

The communication base station installs solar panels outdoors, and adds MPPT solar controllers



and other equipment in the computer room. The power generated by solar energy is used by ...



## Base Station Backhaul Microwave Solution , Huawei ...

Based on leading wireless, transmission, and datacom technologies, Huawei base station backhaul microwave solution provides fiber-level broadband ...

## Optimal Solar Power System for Remote

...

This paper aims to address both the sustainability and environmental issues for cellular base stations in off-grid sites. For cellular ...



## Communication Base Station Smart Hybrid PV Power Supply ...

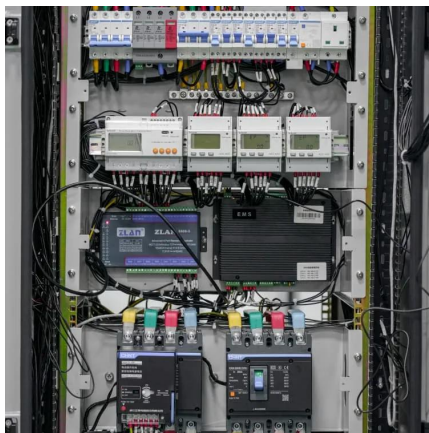
The Ipandee hybrid PV Direct Current (DC) Power Supply System is a green energy power supply solution specifically designed for communication operators to save energy, reduce carbon ...





### Smart Dongle-4G , HUAWEI Smart PV Global

Huawei Smart Dongle-4G supports the communication between the inverters and your solar management system via 5G connection and hassle-free plug and ...



### Application of wind solar complementary power ...

To solve the problem of long-term stable and reliable power supply, we can only rely on local natural resources. As inexhaustible ...

### **How to make wind solar hybrid systems for telecom stations?**

At present, wind and solar hybrid power supply systems require higher requirements for base station power. To implement new energy development, our team will continue to conduct ...



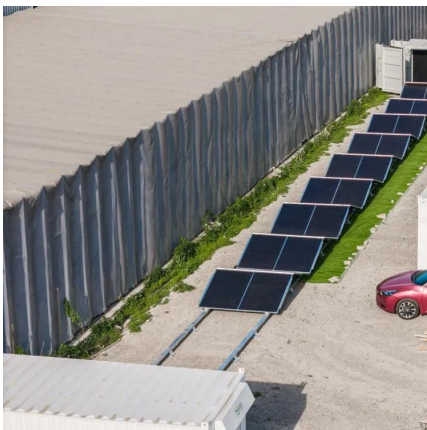
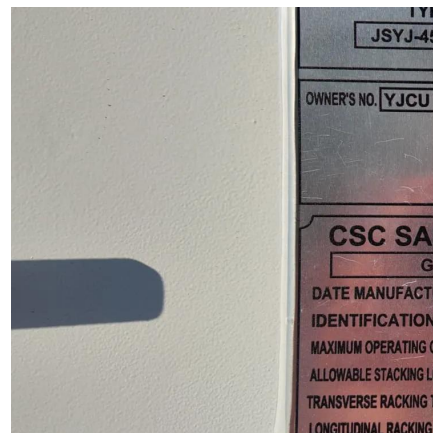
### **Huawei AI's Green Telecom Towers**

The telecom sustainability solution allocates power and integrates renewables, to which Huawei claims this model could save the telecom industry \$18 billion annually - if ...



## Communication base station wind-solar complementary power ...

RETURN TO LIST » ?Prev?Wind and solar complementary billboard power supply system  
?Next?Wind-solar complementary hydrological monitoring system



## 5kw Wind-Solar Complementary System for Communication ...

It can control the wind turbine to run or stop by testing the environment wind speed and system working voltage. When the environment wind speed or system voltage is over the set value, it ...

## How the Sun Revitalized This Landscape, Community & Economy

A timespan of just ten years saw the development of the world's first 100% clean energy UHV power transmission line as well as the world's largest renewable energy base, PV power ...



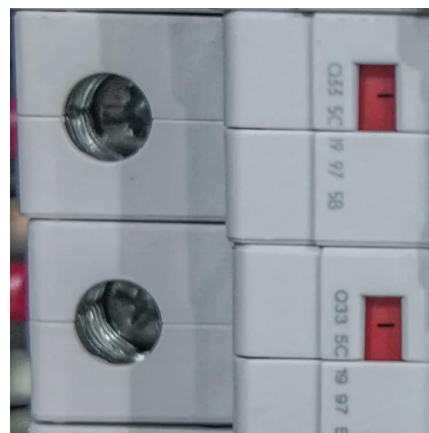


## HUAWEI PLC Module

A PLC module consists of the station (STA) and central coordinator (CCO), The PLC CCO can connect to SUN2000 inverters that support power line ...

## Huawei Tong

Huawei Tong (Student Member, IEEE) received the B.S. degree in communication engineering from TianGong University, Tianjin, China. He is currently working toward the Ph.D. degree with ...



## Leading Solar Solutions for a Greener Future

HUAWEI FusionSolar advocates green power generation and reduces carbon emissions. It provides smart PV solutions for residential, commercial, ...

## CN202249000U

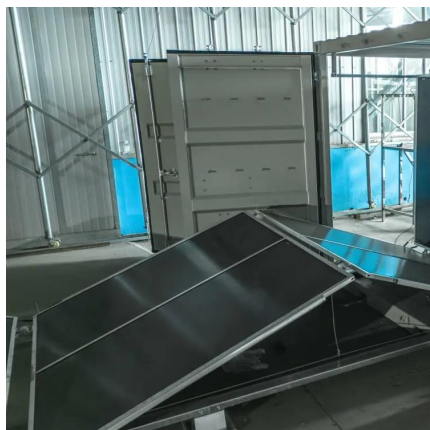
The invention relates to a wind-solar complementary integrated base station with a tower room structure, which comprises a tower mast, a base station machine room, a solar power ...





### **5kw Wind-Solar Complementary System for Communication Base Station**

It can control the wind turbine to run or stop by testing the environment wind speed and system working voltage. When the environment wind speed or system voltage is over the set value, it ...



### **Communication base station power station based on wind-solar**

The communication base station power station based on wind-solar complementation comprises a foundation base, a communication tower mast, a base station machine room, a wind power ...



### **Introduction of wind solar complementary power supply system for**

The wind solar complementary power supply system of communication base station is composed of wind turbine generator, solar cell module, communication integrated ...





## forum.huawei

We're sorry but web site doesn't work properly without JavaScript enabled. Please enable it to continue. Loading



## Huawei

Huawei is a leading global provider of information and communications technology (ICT) infrastructure and smart devices.

### Application of wind solar complementary power generation ...

In addition, solar energy and wind energy are highly complementary in time and region. The island scenery complementary power generation system is an independent power ...



### Application of wind solar complementary power generation ...

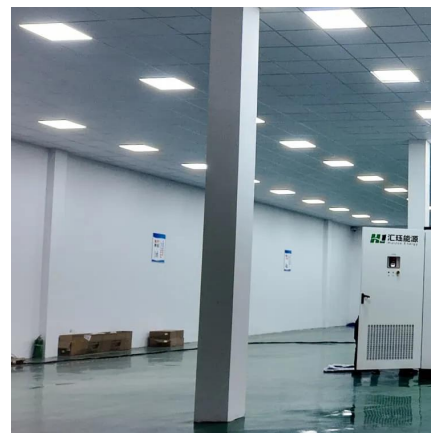
To solve the problem of long-term stable and reliable power supply, we can only rely on local natural resources. As inexhaustible renewable resources, solar energy and wind ...





## Communication Base Station Energy Power Supply System

The wind-solar-diesel hybrid power supply system of the communication base station is composed of a wind turbine, a solar cell module, an integrated controller for hybrid energy ...



## Contact Us

---

For catalog requests, pricing, or partnerships, please visit:  
<https://www.talbert.co.za>