

Huawei 5G communication base station





Overview

How many 5G base stations does Huawei have?

The contracts have been split into two projects, with the first covering 63,800 base stations using 2.6GHz to 4.9GHz spectrum, while the second covers 23,141 in the 700MHz band. Huawei is estimated to have secured 45,426 5G base stations worth an estimated 4.1 billion yuan (US\$574 million).

What is a Huawei base station?

Let's dive into a technical explanation. A base station, also known as an eNodeB (for 4G LTE) or gNodeB (for 5G NR) in Huawei's terminology, is a piece of equipment that facilitates wireless communication between user equipment (UE) like smartphones, tablets, and IoT devices, and the core network of the telecommunications provider.

What is a 5G network architecture?

The following describes the concepts needed to understand 5G network architectures: Evolved Packet Core (EPC): an LTE core network. EPC is classified into two types: traditional LTE core network (supporting access through LTE base stations) and upgraded LTE core network (also called EPC+, supporting access through 5G base stations).

What is a standalone 5G network?

Standalone (SA): standalone networking. SA uses an end-to-end 5G network architecture, where 5G standards are used on terminals, base stations, and core networks. SA supports a variety of 5G new services, including eMBB, URLLC, and mMTC, and is applicable to the middle and later stages of 5G network construction.

How much will Huawei spend on 5G?

The operator, which ended Q1 with 983 million mobile subscribers, expects to spend 83.1 billion yuan (\$11.6 billion) on 5G networks this year. Huawei



previously won 57 percent of China Mobile's previous 5G tender process back in 2020.

What is a 5G modem?

5G modem: is built into a router to implement the 5G function and maintain compatibility with the LTE and 3G functions. User equipment (UE): a terminal device used by a user to access a wireless network. On a WAN, a UE is a router. A UE has two roles: terminal equipment (TE) and mobile station (MS).



Huawei 5G communication base station

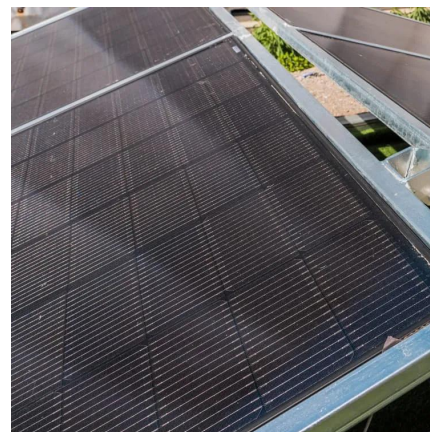


Huawei wins huge share of China Mobile's 5G base ...

In total, Huawei has won 52 percent of China Mobile's 5G base station work, as part of the largest portion of the contracts put out for tender ...

How many countries have deployed Huawei's 5G base stations, ...

Finally, Huawei's 5G base stations have helped enhance coverage in areas where traditional wireless communication networks may struggle to reach. This includes rural areas, dense ...



Base Station Huawei BBU5900 Series 5G LTE UBBPF1 ...

The Huawei BBU5900 Series Base Station, equipped with essential modules like UBBPF1, UBBPG2D, UMPTE3, UMPTE5, and UPEUE, stands out as a powerful, flexible, and energy ...

Top 5G Base Station gNodeB Manufacturers & Vendors

Explore the leading manufacturers of 5G gNodeB base stations, including Nokia, Ericsson, Huawei,

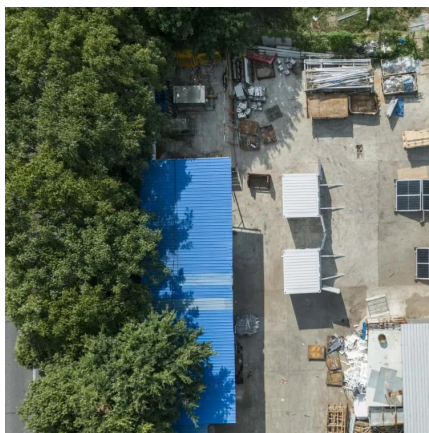


Samsung, and ZTE, and their contributions to the telecom industry.



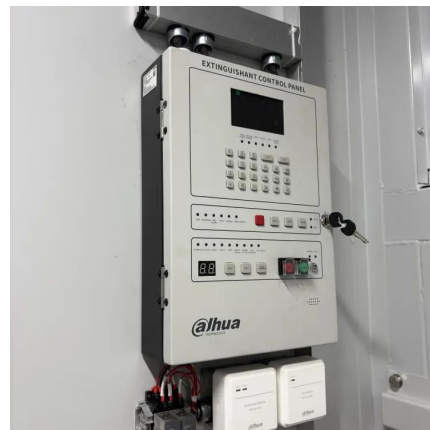
DBS3900 Distributed Base Stations -- Huawei products

Huawei's DBS3900 base stations feature eLTE mobile broadband access, modular design, simple installation, flexible deployment, low power consumption



5G RAN Architecture: Nodes And Components

4. Base Station Base Station (BS) is a key component of the 5G Radio Access Network (RAN) architecture that serves as an access point for wireless connections between ...



DBS5900 Distributed Base Stations -- Huawei Enterprise

The DBS5900 can meet the needs of industry users for wireless broadband access and multimedia critical communication, and obtain better coverage and user experience. The ...





Huawei Breaks Barriers with World's Highest 5G ...

The 5G Advanced base station on Mount Everest is a marvel of engineering. It leverages Huawei's latest advancements in technology to deliver ultra-fast, ...



[Base Station Huawei BBU5900 Series 5G LTE ...](#)

The Huawei BBU5900 Series Base Station, equipped with essential modules like UBBPF1, UBBPG2D, UMPTE3, UMPTE5, and UPEUE, stands out as a ...

[5G Huawei BTS5900 , PDF , Internet , Computing](#)

The document outlines the evolution of target networks in the 5G era, focusing on the transition from 4G to 5G through various technological advancements. It emphasizes the importance of ...



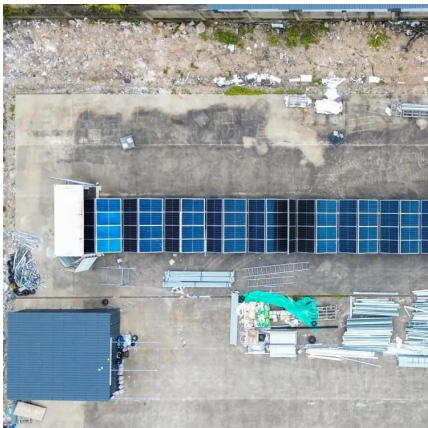
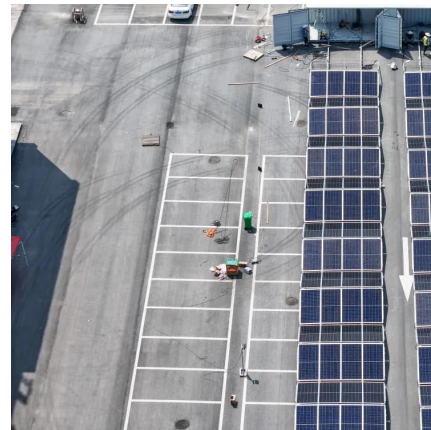
5G Technology Market Size , Growth Trends 2025-2037

The 5G technology market size was over USD 29.8 billion in 2024 and is set to cross USD 4.1 trillion by the end of 2037, witnessing a CAGR of ...



How many countries have deployed Huawei's 5G base stations, ...

Huawei has deployed its 5G base stations in several countries worldwide, including China, South Korea, UAE, Switzerland, and Canada. The deployment has had a significant impact on ...



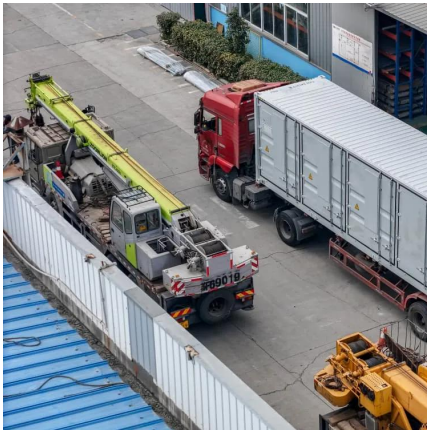
Machine Learning and Analytical Power Consumption ...

Abstract--The energy consumption of the fifth generation (5G) of mobile networks is one of the major concerns of the telecom industry. However, there is not currently an accurate and ...

[Global 5G Base Station Industry Research Report](#)

The 5G base station is the core device of the 5G network, providing wireless coverage and realizing wireless signal transmission between the wired ...





Base station

In radio communications, a base station is a wireless communications station installed at a fixed location and used to communicate as part of one of the ...

Huawei Breaks Barriers with World's Highest 5G Advanced Base Station ...

The 5G Advanced base station on Mount Everest is a marvel of engineering. It leverages Huawei's latest advancements in technology to deliver ultra-fast, low-latency connectivity at ...

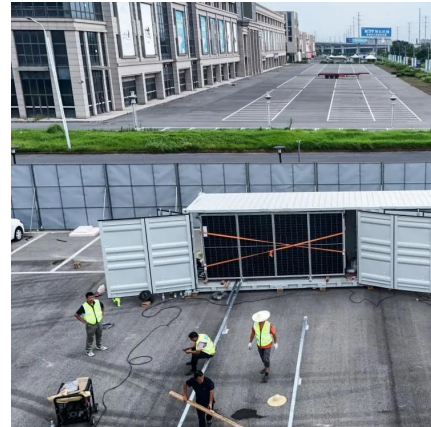


Huawei's 5G Base Station Shipments Exceed 1.2 Million

During the convention of "2022 World Telecommunications and Information Society Day" held recently, Jiang Yafei, Senior Vice President of Huawei Technologies Co., Ltd., ...

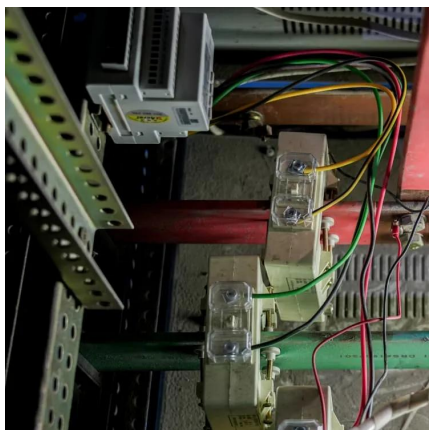
Huawei wins huge share of China Mobile's 5G base station ...

In total, Huawei has won 52 percent of China Mobile's 5G base station work, as part of the largest portion of the contracts put out for tender this year, according to Yicai Global.



Service innovation: Accelerating 5G development

At MWC Shanghai 2019, Huawei Deputy Chairman Ken Hu gave an update on Huawei's progress in 5G deployment, sharing concrete ...



What is huawei base station

Huawei's base stations, such as the DBS5900 and DBS3900, are advanced wireless access devices designed to support various network technologies, including 4G LTE and 5G NR.



5G-A Receivers to Supplement 5G Base Stations, Huawei ...

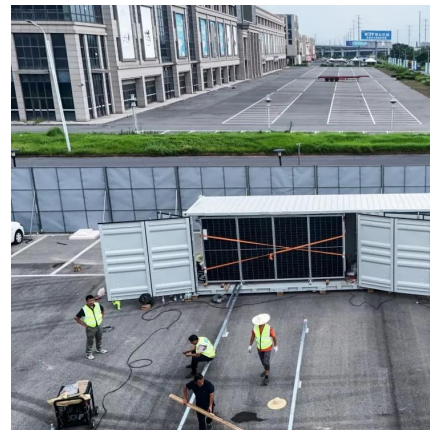
Shenzhen-based Huawei and China Mobile deployed nearly one thousand 5G-A base stations in Beijing, Shanghai, Hangzhou, and Shenzhen in the first half of this year, Sun ...





Huawei Releases 5G Series Products to Expand Multi ...

At the 2021 Mobile World Congress (MWC 2021) in Barcelona, Huawei launched a series of 5G products and solutions oriented to "1+N" 5G ...



huawei base station

A Huawei base station is a critical component in modern telecommunications networks, specifically in cellular networks like 4G LTE and 5G NR. Let's dive into a technical ...

5G Network Architectures and Technologies

eNodeB (eNB): an LTE base station. Two types of eNBs are available: One is the conventional LTE eNB, supporting connections to an LTE core network, and the other is the enhanced LTE ...



How Huawei's 5.5G Solutions Unlock the Low Altitude ...

Its 5.5G synaesthesia solution uses a 4.9GHz frequency band, a transmitter, and a receiver to test the base station functionalities and aims to ...



5G-A Receivers to Supplement 5G Base Stations, ...

Shenzhen-based Huawei and China Mobile deployed nearly one thousand 5G-A base stations in Beijing, Shanghai, Hangzhou, and Shenzhen ...



Contact Us

For catalog requests, pricing, or partnerships, please visit:
<https://www.talbert.co.za>