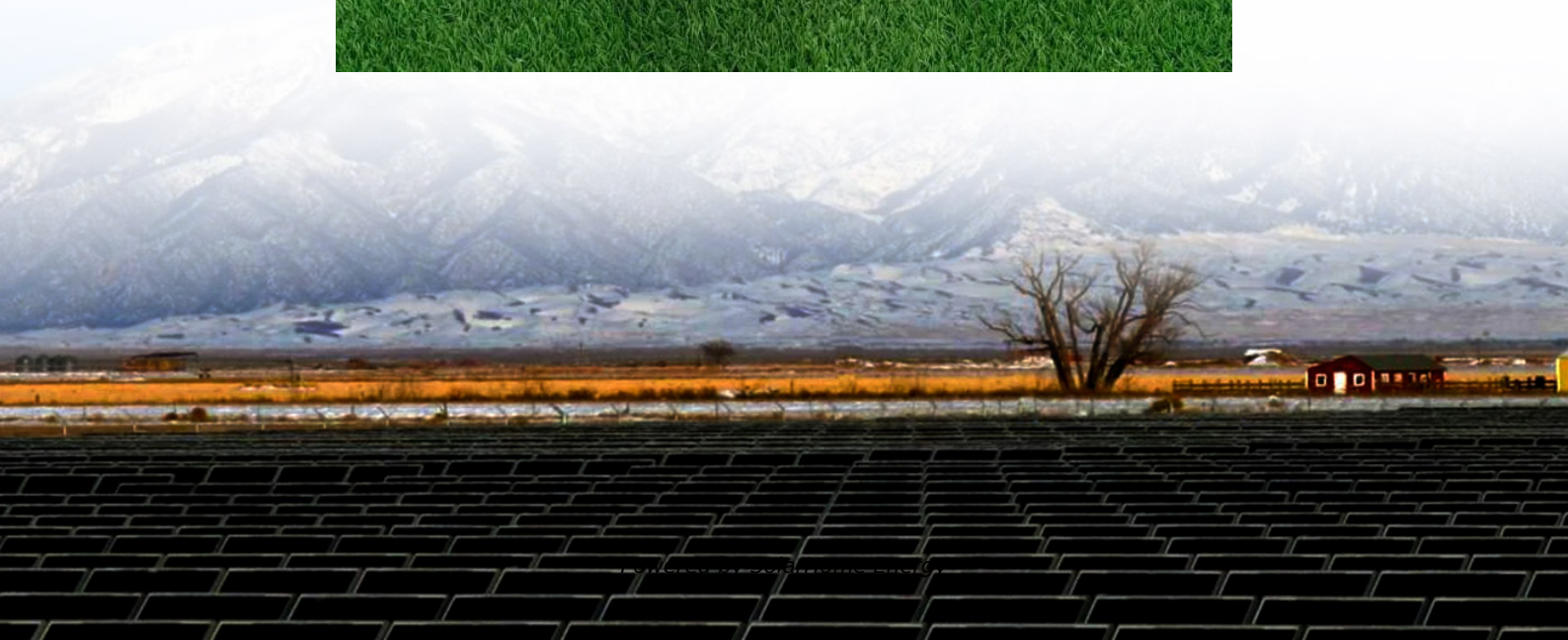


Huawei 5G base stations consume a lot of power





Overview

In Hangzhou, the 5G Power solution deployed by China Tower and Huawei supports one cabinet for one site and boasts smart features like intelligent peak shaving, intelligent voltage boosting, and intelligent energy storage.

China Tower is a world-leading tower provider that builds, maintains, and operates site support infrastructure such as telecommunication towers, high-speed rail, subway systems.

China Tower and Huawei conducted joint pilot verification in 2018 and found that the 5G Power solution could support effective 5G site deployment without changing the grid, power distribution or cabinets. This in turn could cut retrofitting costs for a single site by more than.

How much power does a 5G station use?

The power consumption of a single 5G station is 2.5 to 3.5 times higher than that of a single 4G station. The main factor behind this increase in 5G power consumption is the high power usage of the active antenna unit (AAU). Under a full workload, a single station uses nearly 3700W.

Are 5G base stations causing more energy consumption?

However, Li says 5G base stations are carrying five times the traffic as when equipped with only 4G, pushing up power consumption. The carrier is seeking subsidies from the Chinese government to help with the increased energy usage.

Why does 5G use more power than 4G?

The data here all comes from operators on the front lines, and we can draw the following valuable conclusions: The power consumption of a single 5G station is 2.5 to 3.5 times higher than that of a single 4G station. The main factor behind this increase in 5G power consumption is the high power usage of the active antenna unit (AAU).

Does China Mobile have a 5G base station?



China Mobile has tried using lower cost deployments of MIMO antennas, specifically 32T32R and sometimes 8T8R rather than 64T64R, according to MTN. However, Li says 5G base stations are carrying five times the traffic as when equipped with only 4G, pushing up power consumption.

How will 5G affect the energy consumption of mobile operators?

Edge compute facilities needed to support local processing and new internet of things (IoT) services will also add to overall network power usage. Exact estimates differ by source, but MTN says the industry consensus is that 5G will double to triple energy consumption for mobile operators, once networks scale.

What is a 5G base station?

A 5G base station is mainly composed of the baseband unit (BBU) and the AAU — in 4G terms, the AAU is the remote radio unit (RRU) plus antenna. The role of the BBU is to handle baseband digital signal processing, while the AAU converts the baseband digital signal into an analog signal, and then modulates it into a high-frequency radio signal.



Huawei 5G base stations consume a lot of power

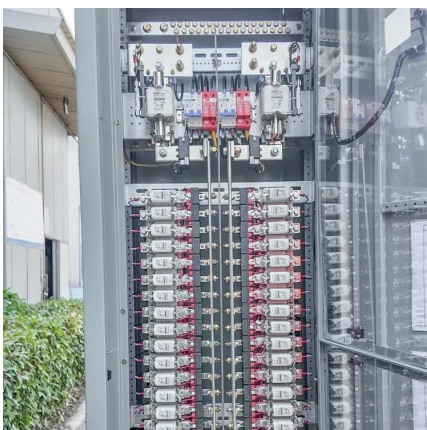


Digitalizing site power for green connectivity and ...

This approach opens up base station resources, transforming them from communication stations into social stations that maximally utilize resources. In ...

Modelling the 5G Energy Consumption using Real-world ...

This paper proposes a novel 5G base stations energy consumption modelling method by learning from a real-world dataset used in the ITU 5G Base Station Energy Consumption Modelling ...



[How Much Power Does 5G Base Station Consume?](#)

Have you ever wondered how much energy our hyper-connected world is consuming? 5G base stations, the backbone of next-gen connectivity, now draw 3-4 times more power than their 4G ...

Why does 5g base station consume so much power and how to ...

5G base stations use high power consumption and high RF signals, which require more signal



processing for digital and electromechanical units, and also put greater pressure ...



Power Consumption Modeling of 5G Multi-Carrier Base ...

However, there is still a need to understand the power consumption behavior of state-of-the-art base station architectures, such as multi-carrier active antenna units (AAUs), as well as the ...

5G network deployment and the associated energy consumption ...

The simulation results show that 700 MHz and 26 GHz will play an important role in 5G deployment in the UK, which allow base stations to meet short-term and long-term data ...



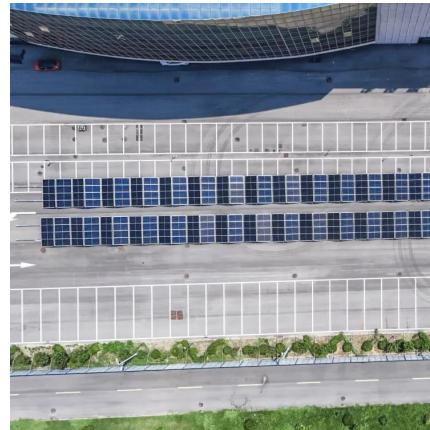
How much power does 5G consume?

When base stations, data centers and devices are added together, telecommunications will consume more than 20% of the world's electricity by ...



Huawei's 5G base stations consume 20% less power than the ...

Huawei's 5G Simplified Solution, such as the Super Blade Site, is a full-outdoor modular design, requires no air conditioning for base stations



[Front Line Data Study about 5G Power Consumption](#)

The power consumption of a single 5G station is 2.5 to 3.5 times higher than that of a single 4G station. The main factor behind this increase in 5G power consumption is the high power ...



[5G Power - IEEE ComSoc Technology Blog](#)

Look at this test data, this is already the world's top-level base station, produced by the world's top suppliers, using the most advanced chips from Japan and the United States. ...



5G base stations use a lot more energy than 4G base ...

A typical 5G base station consumes up to twice or more the ...



China Mobile Anhui & Huawei Join

PRESS RELEASE: On May 24th, 2024, Anhui Mobile, in partnership with Huawei, has taken the lead in accomplishing the pilot commercial verification of the built-in intelligence ...



5G base stations use a lot more energy than 4G base stations: MTN

A typical 5G base station consumes up to twice or more the power of a 4G base station, writes MTN Consulting Chief Analyst Matt Walker in a new report entitled " Operators ...

How much power does 5G consume?

When base stations, data centers and devices are added together, telecommunications will consume more than 20% of the world's electricity by 2025, says Huawei analyst Dr. Anders ...





5G Power: Creating a green grid that slashes costs, emissions

The 5G Power solution has a fully modular design and leverages advanced high-density technology, delivering a fourfold increase in power density compared with traditional power

...

Case Study: China Tower & Huawei

As the deployment of 5G continues, the energy consumption of base stations increased significantly and the number of base stations soars. These lead to a sharp increase in ...

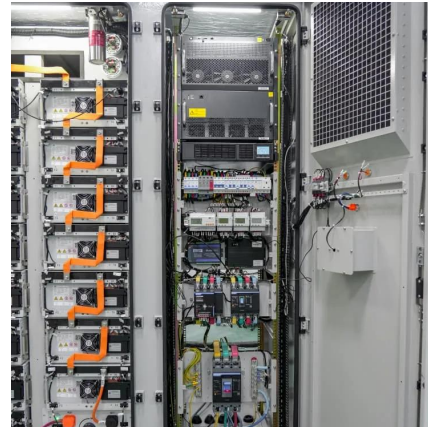


CARBON FOOTPRINT OF 5G

2. Energy Use & Carbon Emissions 5G uses many times the power of 4G According to Ofgem for 2020 (a year mostly in lockdown) the average ...

5G-oriented Site Evolution

Huawei's 5G indoor blade and BoostLi power supplies can provide stable 57 V DC power and reduce voltage drop and loss during transmission. These ...



Why does 5g base station consume so much power ...

5G base stations use high power consumption and high RF signals, which require more signal processing for digital and electromechanical units, ...



Case Study: China Tower & Huawei

As the deployment of 5G continues, the energy consumption of base stations increased significantly and the number of base stations soars. These lead to a ...



What is the Power Consumption of a 5G Base Station?

These 5G base stations consume about three times the power of the 4G stations. The main reason for this spike in power consumption is the addition of massive MIMO and ...





Technical Requirements and Market Prospects of 5G Base Station ...

5G networks use a broader range of spectrum resources, particularly the millimeter-wave bands (24 GHz and above). Base station chips must be capable of efficiently ...

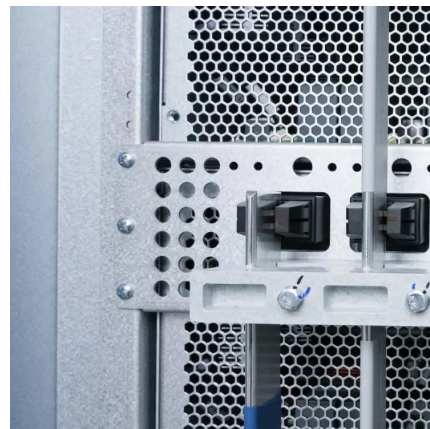


China Unicom Beijing and Huawei Announce World's First Large ...

The 10-gigabit 5G-Advanced low-altitude economy innovation base drives low-altitude economic development in Yanqing At the Great Wall scenic area, the Beijing Yanqing ...

Power Consumption Modeling of 5G Multi-Carrier Base ...

We demonstrate that this model achieves good estimation performance, and it is able to capture the benefits of energy saving when dealing with the complexity of multi-carrier base stations ...



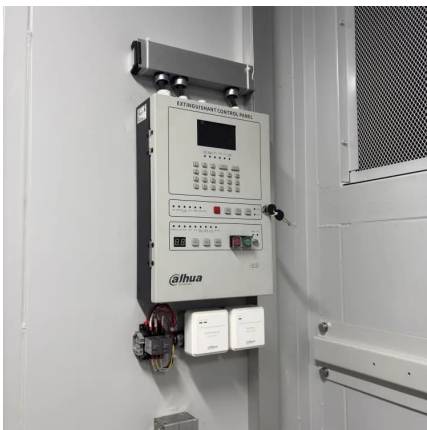
How energy-efficient are Huawei's 5G base stations compared to ...

Power Consumption: Huawei's 5G base stations have significantly lower power consumption compared to their 4G counterparts. This is achieved through advanced power management ...



Power a Green 5G Era with Huawei 5G Power

The 5G Power solution jointly innovated by Huawei and China Tower is a comprehensive power supply solution for 5G sites. It focuses on improving the ...



5G Base Station Growth: How Many Are Active? , PatentPC

Explore the rise of 5G base stations worldwide. Get key stats on active installations and how they impact network coverage.

5G useless technology Hype by Huawei but useless ...

Cuz shorter range Need a lot Base station The shorter wavelength means 5G can carry a lot of data much faster than 4G, but it also means a ...





Contact Us

For catalog requests, pricing, or partnerships, please visit:
<https://www.talbert.co.za>