

# **Huawei 5G base station power supply equipment**





## Overview

---

What is a Huawei base station?

Let's dive into a technical explanation. A base station, also known as an eNodeB (for 4G LTE) or gNodeB (for 5G NR) in Huawei's terminology, is a piece of equipment that facilitates wireless communication between user equipment (UE) like smartphones, tablets, and IoT devices, and the core network of the telecommunications provider.

How much power does a 5G base station use?

Each nation has a different 5G strategy. For 5G, China uses 3.5GHz as the frequency. Then, a 5G base station resembles a 4G system, but it's on a much larger scale. For sub-6GHz in 5G, let's say you have a macro base station. The power levels at the antenna range from 40 watts, 80 watts or 100 watts.

What are 5G power solutions?

Based on the concept of Bit Manages Watt, 5G power solutions use AI and Cloud technologies to implement multi-level intelligent collaboration between power supply and site devices, as well as power supply and network devices. Functional power supplies develop into intelligent ones, which greatly reduce the CAPEX and OPEX of sites.

What are the 3 principles of 5G power design?

Based on a deep understanding of 5G networks, Huawei proposes three principles for 5G Power design; be simple; intelligent; and efficient. 5G power solutions need to be simple. That means the devices require less space, the installation is simple, the deployment is fast, and O&M is easy.

What systems does Huawei offer?

Huawei provides comprehensive management and control systems, such as Huawei's U2000 or Huawei's Cloud BTS. These systems enable operators to monitor, configure, and manage base stations remotely, ensuring optimal



network performance and reliability.

Will 5G sites need a new battery?

As the power consumption of 5G sites increases, the traditional backup power strategies, systems and carriers will also need to be revamped. In addition, while the density of the traditional lead-acid battery is low, they are heavy and large in size. Some sites may have difficulty in accommodating the large weight and size of the lead-acid battery.



## Huawei 5G base station power supply equipment

---



### [HUAWEI 5G Base Station Embedded Power Supply ...](#)

High quality HUAWEI 5G Base Station Embedded Power Supply ETP48200-C5E1 AC to DC from China, China's leading product market ETP48200-C5E1 ...

### **Base Station Huawei BBU5900 Series 5G LTE UBBPF1 ...**

With its advanced features and energy-efficient design, the Huawei BBU5900 base station is a scalable and future-proof solution, ideal for deployment across various environments, including ...



### **Power Amp Wars Begin For 5G**

Demand is increasing for power amplifier chips and other RF devices for 5G base stations, setting the stage for a showdown among ...

### **Power Amp Wars Begin For 5G**

Demand is increasing for power amplifier chips and other RF devices for 5G base stations, setting the stage for a showdown among



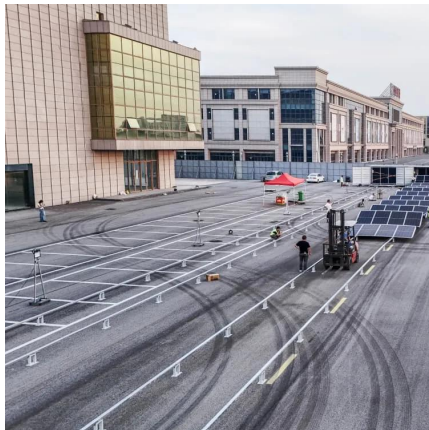


different companies and technologies.



## How energy-efficient are Huawei's 5G base stations compared to ...

Huawei's 5G base stations are more energy-efficient than previous generation equipment due to advanced power management, efficient hardware designs, and the use of smaller cells. They ...



## 5G Power Whitepaper

The high-density power sub rack is used to replace the original power supply, and the high-density lithium battery to replace the lead-acid battery to implement the simple reconstruction ...



## Powering 5G

Power supply arrangements are fundamental to meeting these requirements and suitable isolated DC-DC converters, PoL modules and AC-DC power supplies from leading ...



## Base Station Backhaul Microwave Solution , Huawei ...

Based on leading wireless, transmission, and datacom technologies, Huawei base station backhaul microwave solution provides fiber-level broadband ...



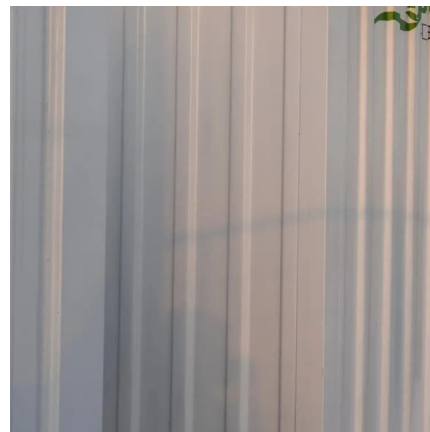
## [Base Station Huawei BBU5900 Series 5G LTE ...](#)

With its advanced features and energy-efficient design, the Huawei BBU5900 base station is a scalable and future-proof solution, ideal for ...



## Selecting the Right Supplies for Powering 5G Base Stations

These tools simplify the task of selecting the right power management solutions for these devices and, thereby, provide an optimal power solution for 5G base stations components.



## [HUAWEI 5G Base Station Embedded Power Supply ...](#)

A: We are a professional supplier of Huawei, Emerson and ZTE power supply modules, embedded power systems and rectifier modules with ...



## Power Supply for Base Station Strategic Insights for 2025 and ...

The global power supply market for base stations is experiencing robust growth, driven by the widespread deployment of 5G networks and the increasing demand for higher ...



## Power consumption based on 5G communication

At present, 5G mobile traffic base stations in energy consumption accounted for 60% ~ 80%, compared with 4G energy consumption increased three times. In the future, high-density ...

## 5G Network Architectures and Technologies

gNodeB (gNB): a 5G base station. gNBs are base stations deployed based on 5G standards to provide wireless access to 5G networks. 5G modem: is built into a router to implement the 5G ...





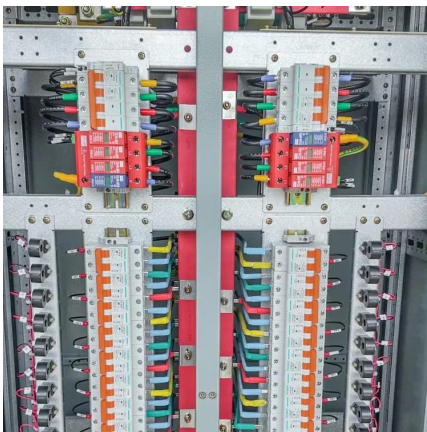
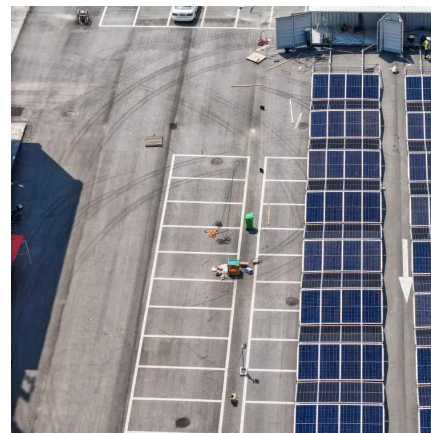


## Selecting the Right Supplies for Powering 5G Base Stations

These tools simplify the task of selecting the right power management solutions for these devices and, thereby, provide an optimal power solution for 5G base stations components.

## Huawei Releases New-Generation 5G-oriented Base ...

At the 2017 Global Mobile Broadband Forum in London, Huawei, the world's leading global information and communications technology (ICT) ...



## Powering 5G

This figure is for one amplifier, and in a typical 5G base station site, according to Huawei, the total power consumption can be over 11.5kW ...

## Site Power Facility

Huawei Site Power Facility offers energy-efficient, low-carbon power supply solutions, enabling carriers to build environmentally sustainable, resilient networks for modern ...





### **HUAWEI 5G Base Station Embedded Power Supply ETP48200 ...**

A: We are a professional supplier of Huawei, Emerson and ZTE power supply modules, embedded power systems and rectifier modules with original packaging and technical service ...



### **Huawei IEC-48-OH outdoor integrated communication power supply ...**

Huawei IEC-48-OH outdoor integrated communication power supply cabinet 5G base station equipment cabinet integrated cabinet from Chinese supplier, Shandong Luyuan ...



### **[On-site energy reductions: Methods & concerns](#)**

Huawei's green GSM base station uses multi-density carrier and RF broadband technology, with each module supporting four to six carrier waves. Its ...





## A technical look at 5G energy consumption and performance

How can 5G increase performance and ensure low energy consumption? Find out in our latest Research blog post.



## Huawei IEC-48-OH outdoor integrated communication power ...

Huawei IEC-48-OH outdoor integrated communication power supply cabinet 5G base station equipment cabinet integrated cabinet from Chinese supplier, Shandong Luyuan ...

## The United States-China 'tech war': Decoupling and ...

The company appears to have maintained its position as one of the world's leading innovators in 5G technology and remains a leading ...



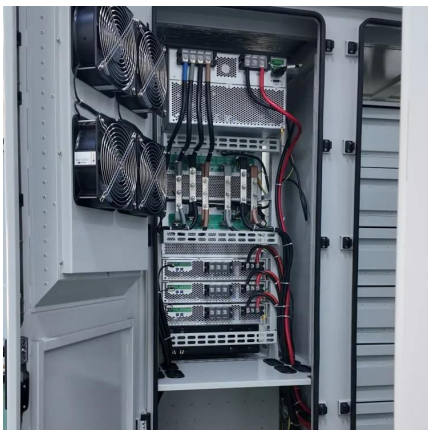
## Powering 5G

Power supply arrangements are fundamental to meeting these requirements and suitable isolated DC-DC converters, PoL modules and AC ...



## huawei base station

Power Supply Unit (PSU): This provides the necessary electrical power to operate the base station components. It ensures that all parts of the base station have a consistent ...



## Power Consumption Modeling of 5G Multi-Carrier Base ...

However, there is still a need to understand the power consumption behavior of state-of-the-art base station architectures, such as multi-carrier active antenna units (AAUs), as well as the ...

## BTS5900 Hardware Description

Explore the BTS5900 base station hardware, including cabinet components, specifications, and configurations. A comprehensive guide for telecom engineers.





## Contact Us

---

For catalog requests, pricing, or partnerships, please visit:  
<https://www.talbert.co.za>