

How to tell the power supply size of the base station





Overview

What is a portable power station size calculator?

This Portable Power Station Size Calculator is a simple yet powerful tool that helps you determine the ideal power station capacity for your needs. By inputting your devices' total power consumption, desired runtime, and power station efficiency, you'll get an accurate estimate of the required capacity in Watt-Hours (Wh).

How to choose a portable power station?

The next step is to consider the capacity of the portable power station. The capacity of the power station will determine how long it can run your devices. Capacity is measured in watt-hours (Wh) and indicates how much electricity the portable power station can store.

How to calculate portable power station wattage?

You can calculate this value by a simple method: Take the wattage each device you wish to power requires and multiply it by the number of hours they are used. After figuring out what size portable power station I need, you are probably asking yourself: Which one should I choose?

.

How do I calculate the required power station size?

The calculator uses the following formula to determine the required power station size: $\text{Required Capacity (Wh)} = \frac{\text{Device Power (W)} \times \text{Runtime (hours)}}{\text{Efficiency}}$
 $\text{Required Capacity (Wh)} = \frac{\text{Device Power (W)} \times \text{Runtime (hours)}}{\text{Efficiency}}$ Where: Device Power (W): The total power consumption of all devices in watts.

What size power station do I Need?

Example 2: "You need a power station with at least 1466.67 Wh capacity.



Determine the appropriate size of a power station to run lights, fans, and small appliances overnight during camping trips. Ensure you have a power station capable of running essential devices, like CPAP machines or communication devices, during extended outages.

What are the different types of portable power stations?

Regardless of the energy source, portable power stations come in various sizes. These sizes range from small models to support small electrical devices to heavy-duty models to keep your devices running for several hours. HOW DOES A PORTABLE POWER STATION WORK?

A portable power station stores electricity within a battery.



How to tell the power supply size of the base station



[What Size Portable Power Station Do I Need?](#)

In this guide, we'll guide you through the key considerations and help you determine the perfect portable power station size for your needs.

PC Power Supply Calculator - PSU Wattage Calculator , Newegg

Why do you need to calculate the wattage of a PSU (Power Supply Unit)? And how can you use the Newegg power supply calculator to determine the right wattage for you? Calculating the ...



[How to Size a Portable Power Station](#)

Luckily, there are formulas to help. Here are all the tools you need to help you find the right size portable power station for your needs.

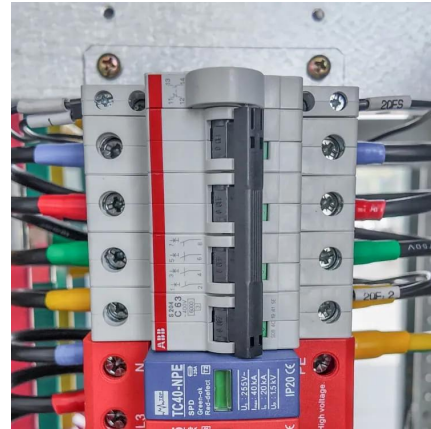


ADT Smart Home Security

The ADT Base is the main in-home controller for your ADT Smart Home Security system. It communicates with your security sensors and



devices and is used to arm and ...



[How to SIZE A BACKUP BATTERY POWER](#)

...

This article covers how to size a home battery backup power system. The article goes step by step on battery backup without solar.

[NCE Power Pro and the P 515 power supply system](#)

*NCE Power Pro is complete with its own booster inside the command station's black box and to give power to the Power Pro System, you need a 5 amp power supply. (A ...



[Emergency/Backup Power for Ham Stations](#)

DETERMINE STATION POWER REQUIREMENTS
How much auxiliary power do I need during a power outage?? Type of operation: Monitoring? Net control? Net Participation? DXing? ...



Size, weight, power, and heat affect 5G base station ...

Engineers designing 5G base stations must contend with energy use, weight, size, and heat, which impact design decisions.

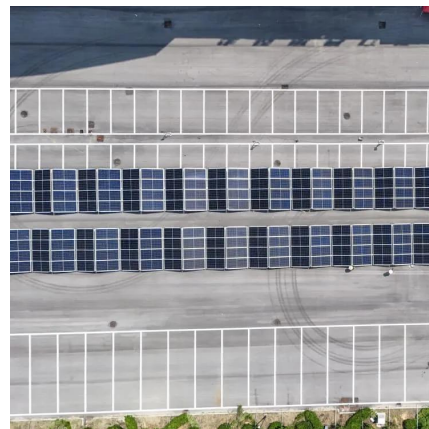


How to Determine the Right Size Portable Power Station for Your ...

Once you have calculated your energy usage for all devices you want to power, you can determine the size of the portable power station you need. Power stations are rated in ...

What Size Portable Power Station Do I Need? An ...

Learn how to calculate your energy needs and choose the perfect power station for home, outdoor, or emergency use.



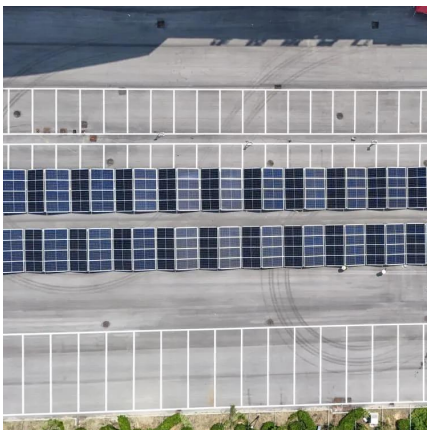
5G Base Station

The main energy consumption of 5G base stations is concentrated in the four parts of base station, transmission, power supply and computer ...



[Portable Power Station Size Calculator](#)

The Portable Power Station Size Calculator is a powerful and user-friendly tool designed to help users determine the ideal size of a portable power station they need.



How Do You Select the Right Size a Portable Power Station?

Selecting the right size power station can seem like a confusing task, we lay out the steps in this article to make it simple.

Guide to GNSS Base stations

Introduction This guide describe and advice how to set up the reference receiver for the base station.





How Do I Know What Size Portable Power Station I Need?

Therefore, the first question you will ask yourself about portable power stations is: What size do I need to fulfill my power requirements? Then, from here, follow your decision-making process.

...

What Size Portable Power Station Do I Need? An Ultimate Guide

Learn how to calculate your energy needs and choose the perfect power station for home, outdoor, or emergency use.



How to Select the Right Size Portable Power Station For Your ...

Sizing a portable power station is far more simple than you might imagine. Below is our six-step process we walk everyone through when trying to determine the best power device for their ...

[Portable Power Station Size Calculator](#)

The Portable Power Station Size Calculator is a powerful and user-friendly tool designed to help users determine the ideal size of a portable ...



How to Calculate Your Power Requirements for a ...

Selecting the right Uninterruptible Power Supply (UPS) system is crucial to ensuring that your critical equipment remains operational during ...



Spectralink IP-DECT Base Station

The Spectralink IP-DECT Base Stations can be powered by Power Over Ethernet (POE) IEEE 802.3af or via an external power supply. Each Spectralink IP-DECT Base Station has 12 ...



How Do You Select the Right Size a Portable Power ...

Selecting the right size power station can seem like a confusing task, we lay out the steps in this article to make it simple.





The Perfect Size Portable Power Station Selection Guidelines

Determining the size of a portable power station is easier than commonly perceived. Here's our six-step process guiding everyone in choosing the ideal power device ...



[Electric Meter Inspection, Reading, Problem...](#)

Electric meter inspection & repair home page. This article discusses the visual inspection of electrical meters & meter bases & explains how to estimate the ...



How Do I Know What Size Portable Power Station I ...

Therefore, the first question you will ask yourself about portable power stations is: What size do I need to fulfill my power requirements? Then, from here, follow ...



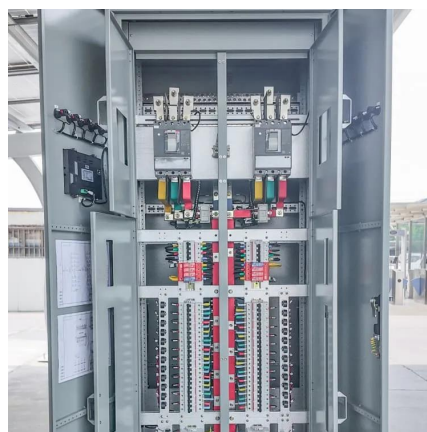
What Size Portable Power Station Do I Need: Expert Tips Revealed

Deciding on the right size portable power station depends on your device needs and usage duration. Calculate the wattage of your devices and how long you'll use them to ...



Power supply unit (computer)

A power supply unit (PSU) converts mains AC to low-voltage regulated DC power for the internal components of a desktop computer. Modern personal computers universally use switched ...

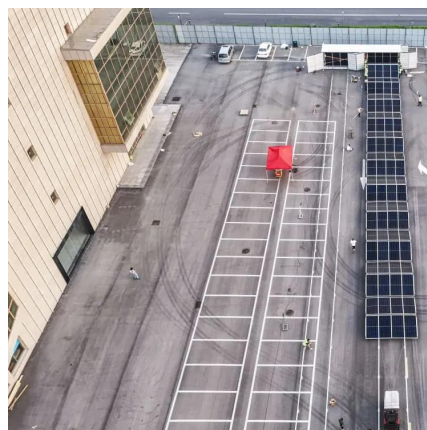


5G macro base station power supply design strategy and ...

For macro base stations, Cheng Wentao of Infineon gave some suggestions on the optimization of primary and secondary power supplies. "In terms of primary power supply, we ...

Best portable power station of 2025: My top-rated power

Best portable power station for RVs and home back-up A heavyweight beast of a power station, this unit boasts battery expansion, loads of ports, and the high battery capacity ...





What Size Portable Power Station Do I Need: Expert ...

Deciding on the right size portable power station depends on your device needs and usage duration. Calculate the wattage of your devices and ...

Contact Us

For catalog requests, pricing, or partnerships, please visit:
<https://www.talbert.co.za>