

How to install the circuit breaker in the battery cabinet





Overview

How do I connect a battery to a cabinet?

requirements, see paragraph 3.2.3 on page 15, Table 4-1, and Figure 4-8. In the first battery cabinet, locate the battery-cabinet-to-battery-cabinet Shunt Trip and Aux battery interface cable with connector P3. Route this connector into the next cabinet and mate with the matching J3 connector in that cabinet (see Figure 4-8).

How do I connect a battery cabinet to a ups?

1.7 For More Information, for UPS cabinet terminal locations. Route the battery cabinet ground wiring from the UPS through the top of the IBC to the wiring channel on the left side of the IBC (see Figure 13). Route the wiring along the wiring channel to the IBC ground terminal block.

Where do I install a line-up and match Battery Cabinet?

Line-up-and-match battery cabinets are installed adjacent to the UPS. The recommended installation location is on the right side of the UPS cabinet as viewed from the front of the cabinet. See Figure 2 for line-up-and-match configuration view. Figure 2. Eaton 93PM 50 kW or 100 kW UPS and Two 93PM Integrated Battery Cabinets.

How do I wire a 93pm integrated battery cabinet?

Remove the IBC conduit landing plates to drill or punch conduit holes, or remove knockouts in the conduit plate. Use this procedure to wire standalone 93PM Integrated Battery Cabinets to the 93PM UPS cabinet. Verify the UPS system is turned off and all power sources are removed.

How is a battery system installed?

installed on a level floor suitable for computer or electronic equipment. Each cabinet in the battery system is placed in its correct location. A cabinet ground g/mounting kit is installed between any cabinets that are bolted together. A



ground wire is installed between all cabinets. All conduits and cables are properly routed to the battery.

How do I install a UPS battery?

the UPS: Create an installation plan for the battery cabinet (Chapter 3). Prepare your site for the battery cabinet (Chapter 3). Inspect and unpack the battery cabinet (Chapter 3). Unload and install the battery cabinet, and wire the system (Chapter 4). Complete the Installation Checklist (Chapter 4). Have authority



How to install the circuit breaker in the battery cabinet

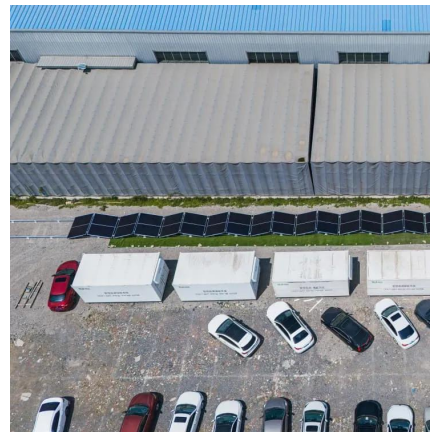


Battery Cabinet

This manual contains information on Atlantic Battery Systems battery cabinets. The information in this manual is intended for Qualified Installers, Equipment Engineers, and Field Support ...

How To Wire A Battery Backup UPS To An Electrical Panel

How To Wire A Battery Backup UPS To An Electrical Panel The following UPS systems are UL listed and can have their output wired directly to an electrical panel to provide uninterrupted ...



BC58 Battery Cabinet Installation, Operation, & Maintenance ...

The option provides functional access to the equipment circuit breaker via a handle located on the exterior of a cabinet door that is physically connected to the circuit breaker in the cabinet's ...

BC58 Battery Cabinet Installation, Operation, & Maintenance ...

Connect main cables from the UPS or charger source to the battery cabinet output. The battery



cabinet output connection point will vary depending on the cabinet configuration. The main ...



[Vertiv™ Liebert® ITA2 Battery Cabinet](#)

Install the Battery Insulating Plates NOTE: Only on UPS models with terminal block battery connectors. Do not reverse the polarity of the battery cables. IMPORTANT! Before connecting ...



[Brady Clamp-On Breaker Lockout , How To Install](#)

Easy to install - without a screwdriver! Learn how to use Brady's Clamp-On Breaker Lockout device on a variety of types and sizes of electrical breakers. Learn



Microsoft Word

Connect main cables to the circuit breaker, when applicable, inside the cabinet from the UPS or charger source. All cables should be sized per NEC and any other local codes pertaining to ...



Powerware 9395 Integrated Battery Cabinet (Model IBC-L) ...

The battery cabinet is installed in a standalone configuration. The term standalone refers to battery cabinets that may be installed adjacent to the UPS or in a separate location, are wired with ...



[How to use Circuit Breaker Lockout for Safety](#)

Q: How do I install and remove a circuit breaker lockout device? A: Follow the manufacturer's instructions for proper installation and removal of circuit ...

Installation Procedure

Remove the Empty Classic Battery Cabinet from the Pallet. Position the Empty Classic Battery Cabinet. Mechanical installation. Follow one of the procedures: Mechanical Installation for ...



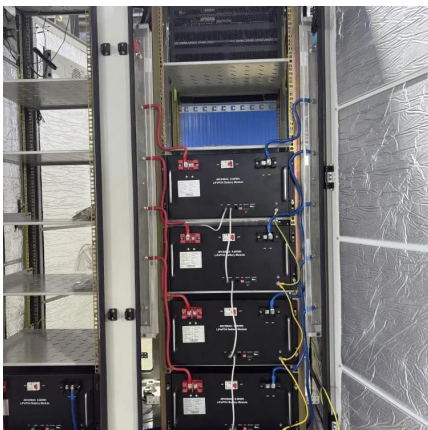
Mitsubishi Electric Power Products, Inc. BC43 Battery ...

Battery cabinets that are not supplied with an incorporated DC output disconnect device must have an appropriate disconnect device provided external to the cabinet.



-48 VDC Battery Cabinet Installation and User Manual ...

battery cabinet are battery disconnect circuit breaker alarm lead assemblies. Refer to the power system installation manual to use these alarm leads to connect the battery cabine



UBC80 Battery Cabinet Installation, Operation.

Putting the circuit breaker in its Closed/On position by using an external handle located on the battery cabinet door accomplishes the following;

Constructing the Battery Shed Electrical Cabinet, Breakers & Bus ...

Mounting the main battery breaker, charge controller breakers, PV breakers, and combiner bus bars in a custom-built electrical cabinet.





ZincFive BC Series UPS Battery Cabinets

When the battery cabinet is configured with an UVR access, the circuit breaker cannot be turned on until UPS outputs its rated UVR voltage. When the battery cabinet is configured with a ...

How to Attach a Circuit Breaker To a Marine Battery?

When a circuit breaker is tripped, it simply has a switch flipped and needs to be reset -- some even reset themselves automatically. Circuit ...



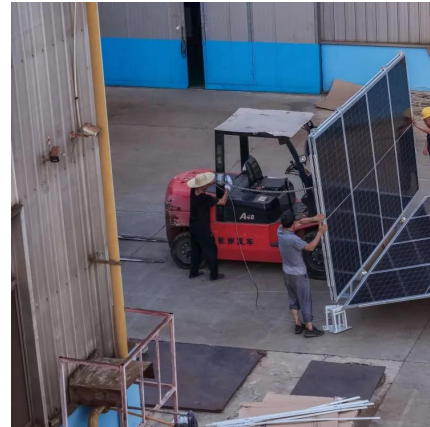
Eaton 93PM Integrated Battery Cabinet-Small Installation ...

This manual contains important instructions that should be followed during installation and maintenance of the UPS and batteries. Read all instructions before operating the equipment ...



Powerware 9395 Integrated Battery Cabinet (Model IBC-L) ...

Use this procedure to install the battery cabinet. The battery cabinet shown in Figure 4-2 is located adjacent to the UPS cabinet, but may be located in a separate location.



[Simple installation manual of DC cabinet](#)

Simple installation manual of DC cabinet 1. Basic components The DC cabinet mainly collects and distributes current to each battery cluster to realize charge and discharge management ...



-48 VDC Battery Cabinet Installation and User Manual ...

Connect the power system's battery cable terminated in an Anderson connector to the first battery cabinet's battery cable terminated in a mating Anderson connector.



[UBC87 Battery Cabinet Installation. Operation.](#)

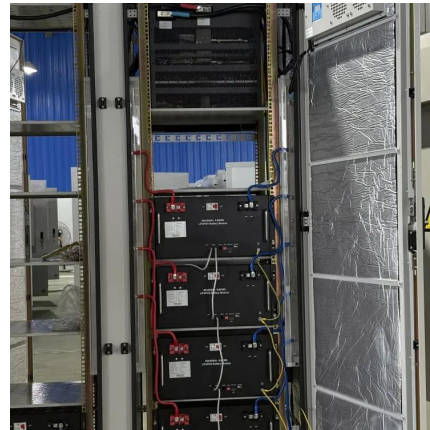
Install the main POS and NEG cables from the output circuit breaker to the correct battery posts on the designated battery units shown in the provided battery system schematic.





How to Install a Circuit Breaker: A Step-by-Step Guide

Learn How to Install a Circuit Breaker with this step-by-step guide, ensuring proper electrical protection in your home. Read Now!



UPS Tech cycled battery cabinet breakers and blew every fuse

UPS Tech cycled battery cabinet breakers and blew every fuse in each cabinet - Anyone have insight into why this would happen? So I do building maintenance for a data center and the ...

4400 SERIES BATTERY CABINET

Connect main cables to the circuit breaker, when applicable, inside the cabinet from the UPS or charger source. All cables should be sized per NEC and any other local codes pertaining to ...



Contact Us

For catalog requests, pricing, or partnerships, please visit:
<https://www.talbert.co.za>