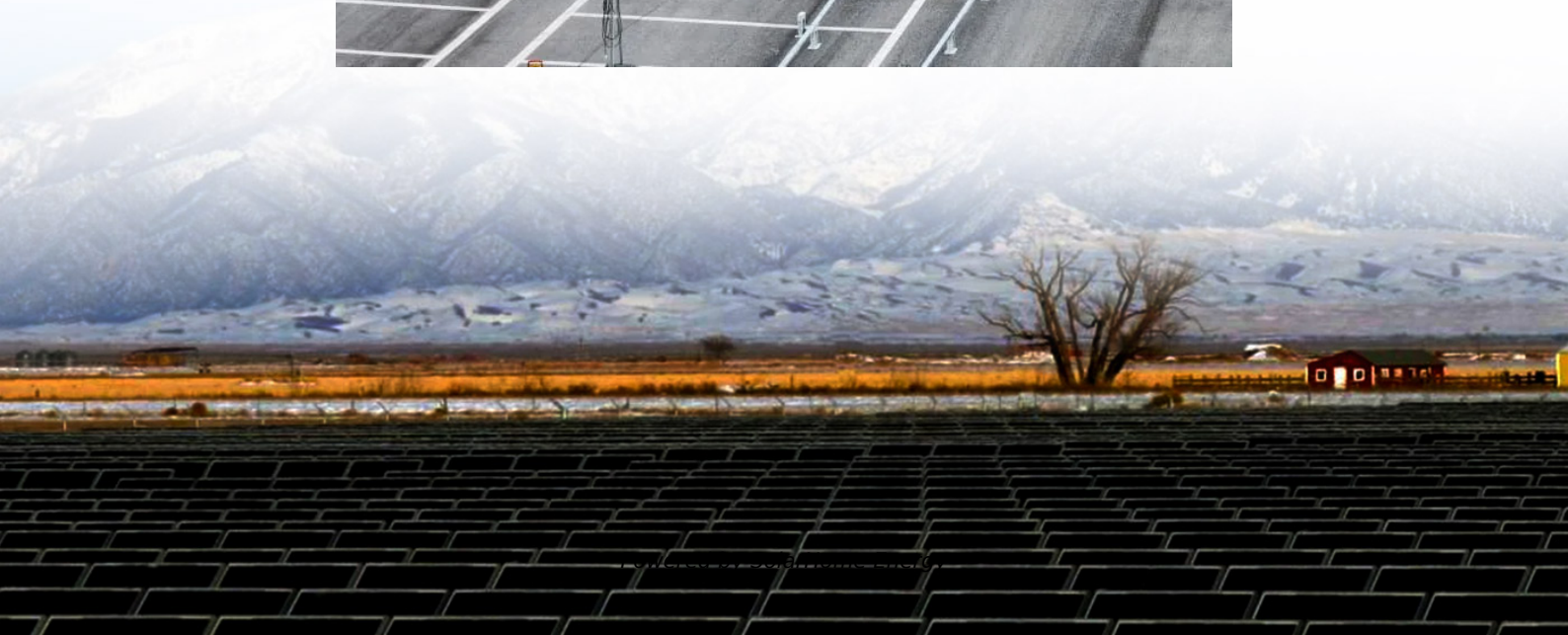
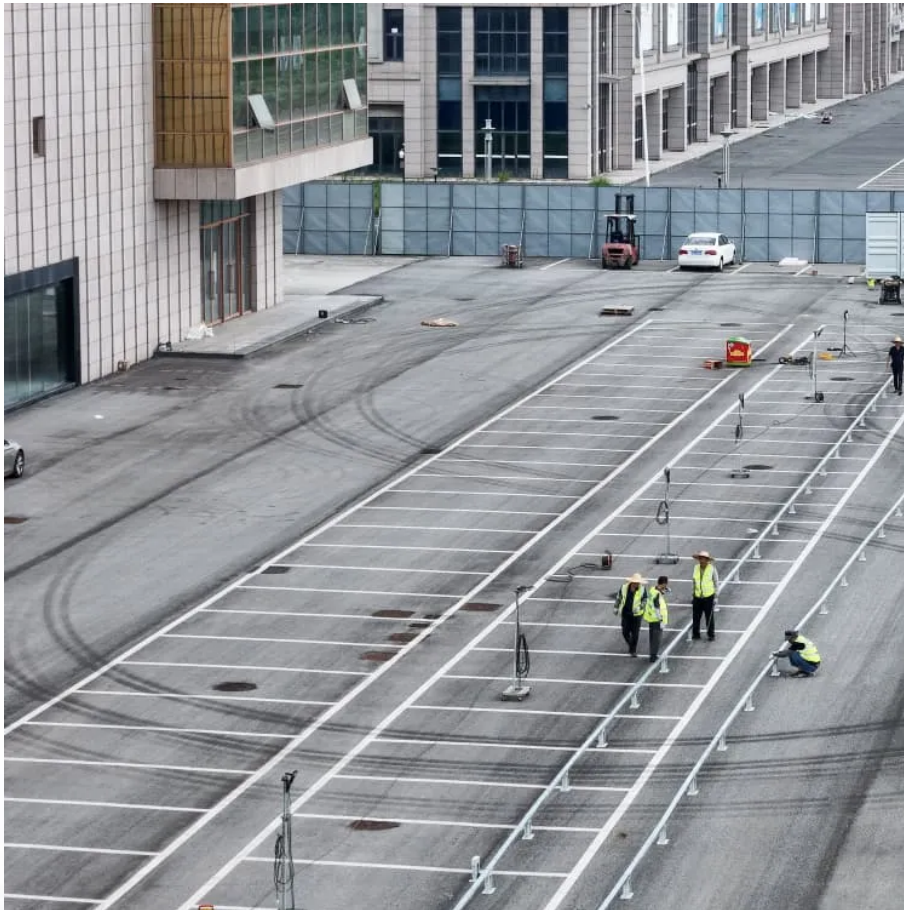


How to find the base station equipment location outdoors





Overview

What is base station operation?

This topic introduces the concept of base station operation, provides information to help you identify good setup locations, describes best practices for setting up the equipment, and outlines the precautions that you need to take to protect the equipment.

Where should a base station be installed?

The location is the actual environment in which the base station will be installed. Typically, this means outside in an open sky environment (e.g. on the roof of a building or in an empty field). Figure 2 shows a typical fixed installation of several antennas, including a VeraChoke and a VeraPhase 6000, on a roof.

Are base stations a good way to stay connected?

Base stations are a great way to stay connected, especially during an emergency. We have base station radios, antennas, and microphones! Same with a vehicle antenna, the longer and higher the antenna is, the more range you will get.

How much does a base station CB cost?

HOA and Zoning: Check local regulations and homeowner association rules before installing visible antennas. How much does a complete base station CB setup cost?

Basic setups start around \$300-500, including radio, antenna, coax, and power supply. Mid-range systems run \$500-1000, while premium installations can exceed \$2000.

How do I start a base station setup?

Before starting a base station setup, the user needs to know and understand



basic concepts of the base-rover setup. The location is the actual environment in which the base station will be installed. Typically, this means outside in an open sky environment (e.g. on the roof of a building or in an empty field).

How does a base station work?

A base station consists of a receiver that is placed at a known (and fixed) position. The receiver tracks the same satellites that are being tracked by the rover receiver, at the same time that the rover is tracking them.



How to find the base station equipment location outdoors

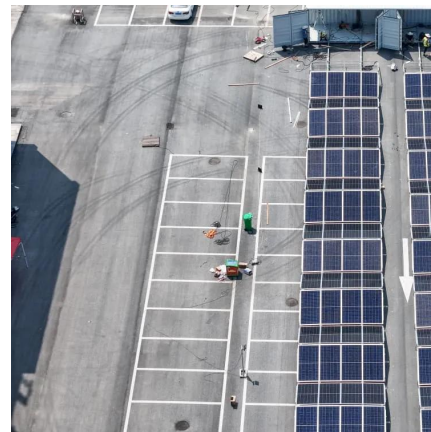


Step-by-Step Guide to Setting Up an RTK Base Station

Follow our detailed guide to correctly set up an RTK base station for accurate surveying. Simplify your workflow with expert tips and best practices.

Base stations and networks

Base station output power is relatively low. The antenna output power level is typically between 20 watts and a few hundred watts for an outdoor base station. Television transmitters, by ...



Setting Up a Base Station CB Radio for Long Range ...

Learn to set up a base station CB radio for long-range communication. Explore key components and expert tips for clear, reliable signals.

[How to Set Up a Base Station CB System: A ...](#)

This guide will walk you through the basic understanding of Base Station CB System, how



to install them and how to do that right



Base Station Antenna Mounts , Antenna Mounts for House

Provide stability to your base station antenna with mounts from Walcott Radio. They are designed to endure mechanical tilting, vibrations and harsh weather.



How to set up a base station - Chapter 1: Introduction ...

This is the first of a series of articles dealing with how to correctly set up a base station. In this article, we give a brief introduction and explain the most ...



[A Beginners Guide To CB Base Station Setups](#)

Erik from Farpoint Farms Goes over everything you'll need to know about buying and setting up a Base station in your home or cabin.





Base station operation guidelines

This topic introduces the concept of base station operation, provides information to help you identify good setup locations, describes best practices for setting up the equipment, and ...



What is RRU in Telecom?

A Remote Radio Unit (RRU), commonly referred to as a Remote Radio Head (RRH), is a transceiver that you'll find on wireless base stations. These ...

Creating The Perfect Outdoor Grill Prep Station: A ...

Creating the perfect outdoor grill prep station is essential for a successful grilling experience. This step-by-step guide will help you design ...



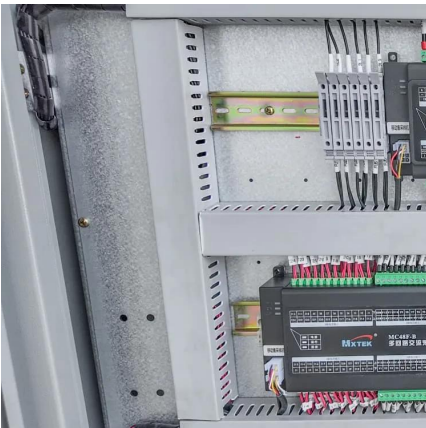
06

You can find the setup instructions for the Base Station here. If you need to use the Base Station in multiple locations, we recommend that you survey and mark locations so you ...



How to Find a Way Into the Base

How to Find a Way Into the Base - Research Station 57 The Droidsmith Quest , Star Wars Outlaws PerfectParadox 68.4K subscribers Subscribed



Microsoft Word

Second, the equipment used within a P25 base station now includes commercial-grade switches, routers, firewalls, trunking repeaters, Rx multi-couplers, and Tx combiners. Much of the P25 ...

How to set up a base station - Chapter 1: Introduction

This is the first of a series of articles dealing with how to correctly set up a base station. In this article, we give a brief introduction and explain the most important concepts.





Base Station Equipment

Base stations are a great way to stay connected, especially during an emergency. We have base station radios, antennas, and microphones! Same with a vehicle antenna, the longer and ...

Base transceiver station

A base transceiver station (BTS) or a baseband unit[1] (BBU) is a piece of equipment that facilitates wireless communication between user equipment (UE) and a network. UEs are ...



Best Ham Radio Base Station Kits for Effective ...

Explore the best ham radio base station kits for effective communication. Find top-rated options to enhance your amateur radio experience and connectivity.

Mobile communication base station , Shanghai Warner Telecom ...

Outdoor cabinet solution with base station equipment, power supply equipment, lead-acid batteries, temperature control system, transmission and other ancillary equipment. The ...



Guide to GNSS Base stations

Introduction This guide describe and advice how to set up the reference receiver for the base station.



[REI Store Locator: Find an REI Store Near You](#)

Find an REI store near you to shop for clothing, gear and footwear. Sign up for classes and events or talk to an REI outdoor expert.



WBS510 , 5GHz 300Mbps Outdoor Wireless Base Station , TP-Link

TP-LINK's 5GHz 300Mbps * Outdoor Wireless Base Station is specifically designed to provide an effective solution for outdoor wireless networking applications. With its ...





[Base Stations for Outdoor Radio , Intelbras](#)

Browse the Outdoor Radio Base Stations line and find quality equipment for professional wireless connections. Know more!



How to Set Up a Base Station CB System: A Complete ...

This guide will walk you through the basic understanding of Base Station CB System, how to install them and how to do that right



Microsoft Word

Our outdoor enclosures enable our customer to meet their exact needs for equipment mounting, thermal management, cable management, power and battery backup while saving substantial ...

Contact Us

For catalog requests, pricing, or partnerships, please visit:
<https://www.talbert.co.za>