

# How to connect the 5G base station power supply





## Overview

---

What is a 5G power supply?

The equipment ensures that devices across the infrastructure stack receive reliable power from the mains network, wherever they happen to reside. With it, individuals and organizations can continue to render services to both themselves and their customers. Overviews The 5G network architecture uses multiple types of power supplies.

How does a 5G base station reduce OPEX?

This technique reduces opex by putting a base station into a “sleep mode,” with only the essentials remaining powered on. Pulse power leverages 5G base stations’ ability to analyze traffic loads. In 4G, radios are always on, even when traffic levels don’t warrant it, such as transmitting reference signals to detect users in the middle of the night.

How will 5G affect power supply design?

Higher bandwidths and compression techniques will let 5G networks shuttle more data through systems in a given period, leaving more power-saving idle time. In light of this, the move to 5G infrastructure is necessitating new power supply design considerations.

What is the access side of the 5G stack?

The access side of the 5G stack includes user equipment such as smartphones, tablets, laptops, and desktop devices. Devices in this part of the stack require power supply equipment that can operate at room temperatures indoors and protect sensitive electronics - already a well-developed area.

What is a 5G backhaul power supply?

The backhaul part of the 5G network connects the access interface - including masts, eNodeB, and cell site gateway - to the mobile core and internet beyond. And just like the access equipment, it too has specific power supply



requirements. Backhaul power supplies must cater to aggregation routers and core routers.

Do 5G small cells need a power supply?

Experts widely believe that 5G small cells need to be able to continue running in the event of electrical anomalies. Pairing them with integrated power supply devices costs more, but it also protects small cells if there are dramatic changes in voltage.



## How to connect the 5G base station power supply

---



### [What is 5G CPE: Features and Comparison \[2025\]](#)

What is 5G CPE? 5G CPE (Customer Premise Equipment) is a device designed to bring 5G connectivity to users, whether in urban, ...

### Recommendations for 5G small base station power supply design

Circuit diagram and introduction to Recommendations for 5G small base station power supply design



### Collaborative optimization of distribution network and 5G base stations

In this paper, a distributed collaborative optimization approach is proposed for power distribution and communication networks with 5G base stations. Firstly, the model of 5G ...

### 5G communication challenge to switching power supply-VAPEL

For the popular networking mode of 5G base station: 3 sectorAAU + 1 BBU, assuming that the



AAU efficiency is 20%, the output power of the switching power supply supplying power to 5G ...



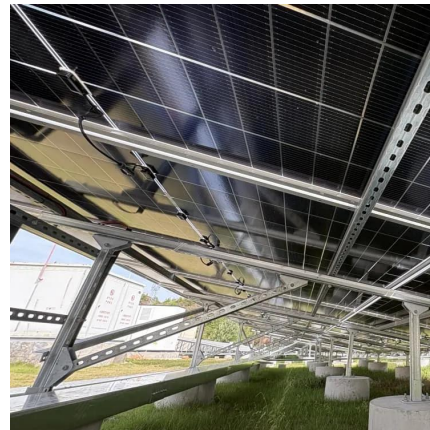
## Building better power supplies for 5G base stations

Building better power supplies for 5G base stations  
Authored by: Alessandro Pevere, and  
Francesco Di Domenico, both at Infineon  
Technologies Infineon Technologies - Technical ...



## Designing to Protect 5G Macro Base Stations for High ...

In this article, learn about protecting three major base station systems, the baseband unit, the power supply, and the backup battery system.



## A Voltage-Level Optimization Method for DC Remote Power Supply of 5G

Unlike the concentrated load in urban area base stations, the strong dispersion of loads in suburban or highway base stations poses significant challenges to traditional power ...





## 5g base station power supply solution

Under the impact of these problems, 5g base station power supply with maintenance free, high reliability, diverse installation methods and high IP protection level is one of the best solutions ...

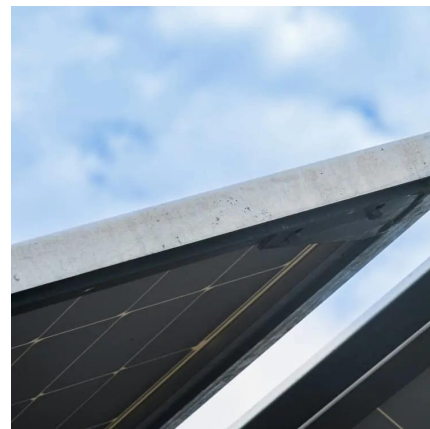


## **The power supply design considerations for 5G base stations**

Infrastructure OEMs and their suppliers see "pulse power" as a potential solution. This technique reduces opex by putting a base station into a "sleep mode," with only the ...

## **Power Management of Base Transceiver Stations for Mobile ...**

A Base Transceiver Station (BTS) is a piece of equipment consisting of telecommunication devices and the air interface of the mobile network. It is referred to as the ...



## **Power Supply Solutions for Wireless Base Stations Applications**

Power supplies can be employed in each of the three systems that compose wireless base stations. These three systems are known as the environmental monitoring system, the data ...



## 5G Base Station Power Supply System: NextG Power's Cutting ...

The 5G rollout is changing how we connect, but powering micro base stations--those small, high-impact units boosting coverage in cities and beyond--is no small feat. These stations need ...



## The power supply design considerations for 5G base ...

Infrastructure OEMs and their suppliers see "pulse power" as a potential solution. This technique reduces opex by putting a base station into a ...

## Size, weight, power, and heat affect 5G base station ...

Engineers designing 5G base stations must contend with energy use, weight, size, and heat, which impact design decisions.





## 5G infrastructure power supply design considerations (Part I)

Building better power supplies for 5G base stations  
Authored by: Alessandro Pevere, and Francesco Di Domenico, both at Infineon Technologies  
Infineon Technologies - Technical ...

### Building a Better -48 VDC Power Supply for 5G and Next

Figure 3 shows a typical high level block diagram of the power supply for a 5G macro or femto RRU board. A hot swap controller is almost universally placed in front of the -48 V DC converter.



### Building a Better -48 VDC Power Supply for 5G and ...

Figure 3 shows a typical high level block diagram of the power supply for a 5G macro or femto RRU board. A hot swap controller is almost universally placed ...

### 5G Base Station Power Supply System: NextG Power's Cutting ...

At NextG Power, we're tackling this challenge with our Reliable & Scalable Power for Next-Generation 5G Networks solution, featuring IP65 waterproof power modules (2000W or ...





### [Telecom Battery Backup System , Sunwoda Energy](#)

A telecom battery backup system is a comprehensive portfolio of energy storage batteries used as backup power for base stations to ensure a reliable and stable power supply. As we are ...



### **base station in 5g**

A 5G base station, also known as a gNodeB (gNB), is a critical component of a 5G network infrastructure. It plays a central role in enabling ...



### **5G infrastructure power supply design considerations (Part I)**

Discover the factors that telecoms organizations need to consider for 5G infrastructure power design in the network periphery.





## 5G Power Supply

The 5G rollout is changing how we connect, but powering micro base stations--those small, high-impact units boosting coverage in cities and beyond--is no small feat. These stations need ...



## Selecting the Right Supplies for Powering 5G Base Stations

These tools simplify the task of selecting the right power management solutions for these devices and, thereby, provide an optimal power solution for 5G base stations components.

## 5G Base Station 48V Rectifier Outdoor Power Supply

The Soetec Switch Mode Power Supply is a highly integrated outdoor 5G micro base station power supply system, it combines AC input power distribution, lightning protection, switching ...



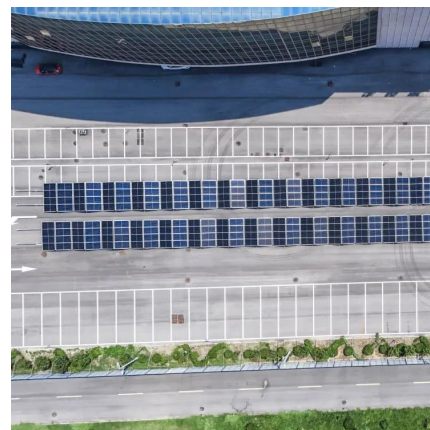
## 5G macro base station power supply design strategy and ...

First, it is necessary to use devices with higher voltage resistance. If it is to be more compact, the number of components that can accept EMI will be reduced, because EMI ...



## Selecting the Right Supplies for Powering 5G Base Stations

These tools simplify the task of selecting the right power management solutions for these devices and, thereby, provide an optimal power solution for 5G base stations components.



## Understanding 5G FWA CPE Technology: The Future ...

Power Supply: Ensures the CPE device remains operational. Direct Power Supply: Utilizes a direct connection to the electrical grid via an AC ...

## Contact Us

For catalog requests, pricing, or partnerships, please visit:  
<https://www.talbert.co.za>