

How to check where the photovoltaic current is in the battery cabinet





Overview

How do I know if my solar panel is current?

Find the panel's current at maximum power (I_{mp}) on the label on the back of your solar panel. Contrast the panel's I_{mp} value with the present reading from the clamp meter. Your current reading should roughly match the I_{mp} of the panel, but it need not be exact. Try the following if your current reading is much below the I_{mp} of the panel:.

How to check if solar panel is charging battery?

If the multimeter shows a reading around 12-20v during peak sunlight times, the solar panel is working and charging the battery. Before we get into how to check if solar panel is charging the battery, you should first understand the underlying principles.

How do you measure a solar panel current?

Remove the towel and read the current on your multimeter. Adjust the tilt angle of your solar panel until you find the max current reading and compare this number to the short circuit current (I_{sc}) listed on the back of your panel. The short circuit current you're measuring should be close to the one listed on the back of the panel.

How do I measure PV current?

Note: You can more easily measure PV current by using a clamp meter, which I discuss below in method #2. That's right — you can use a multimeter to measure how much current your solar panel is outputting. However, to do so your solar panel needs to be connected to your solar system.

How do I check my solar panel wattage?

Remove the towel and place your solar panel outside in direct sunlight, if it isn't already. Once you do, the watt meter will automatically turn on and start measuring your solar panel's power output. 4. Check the wattage and



compare it to the panel's max power, or P_{max} .

How do you test a solar panel?

Measure the solar panel's voltage by connecting the red probe to the positive wire and the black probe to the negative wire coming out from the panel. During peak daylight, you should observe a power rating nearly equal to the solar panel's wattage. A functional solar charge controller is critical for the system's efficiency.



How to check where the photovoltaic current is in the battery cabin



How To Check If The Solar Panel Is Charging Battery

For current, a positive reading (e.g., five mA or 0.5 A) indicates that the solar panel is delivering current to the load or battery. If you see no voltage or current readings, there may ...

A Guide to Battery Energy Storage System Components

EVESCO's battery systems utilize UL1642 cells, UL1973 modules and UL9540A tested racks ensuring both safety and quality. You can see the build-up of the battery from cell to rack in the ...



Installation and Owner's Manual

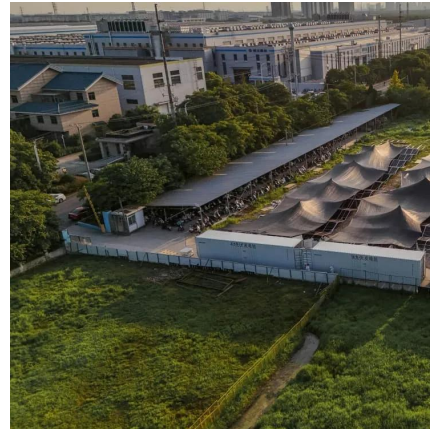
This installation manual provides instructions and recommendations for installing and commissioning the Generac PWRcell® Battery. The PWRcell Battery is designed to house ...

PVWatts Calculator

NREL's PVWatts ® Calculator Estimates the energy production of grid-connected photovoltaic (PV) energy systems throughout the world. It



allows homeowners, small building owners, ...

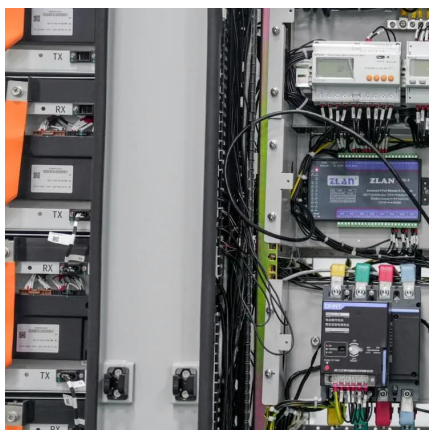
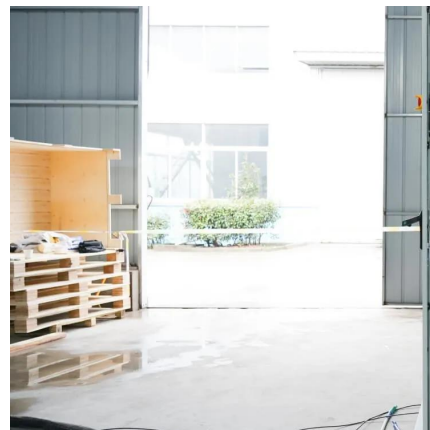


Grid Connected Photovoltaic Systems

3.1 Grid-connected photovoltaic systems Grid-connected PV systems are typically designed in a range of capacities from a few hundred watts from a single module, to tens of ...

A Step-by-Step Guide of Debug PV Grid-Tied Cabinet

Whether you're an installer, engineer, or PV system owner, this article provides clear and actionable steps to ensure your grid-tied PV cabinet operates flawlessly.



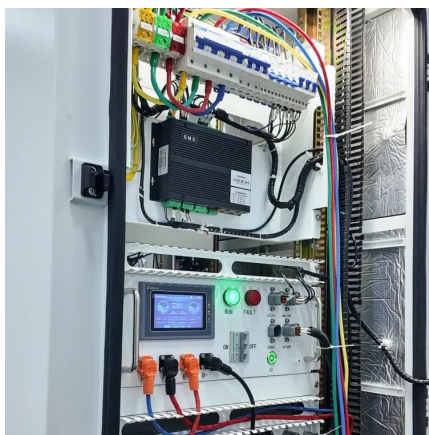
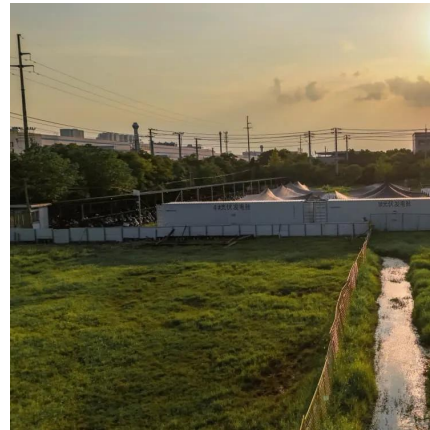
Generac PWRcell

The battery can be used for grid- connected solar applications, such as self-supply, rate arbitrage, and clean backup power. The chart below describes the color and strobing interval of the LED ...



HOW TO TEST A PV MODULE WITH A VOLTMETER?

Testing your PV module with a voltmeter is an essential skill for maintaining your solar system. By regularly measuring the open-circuit voltage and short-circuit current, you can ...



How to Check Solar Panel Polarity (Reverses + Fixes)

Let's check how easy it is to check the polarity of a solar panel, plus some essential solar knowledge. How to check solar panel polarity: To ...

How to Check if Solar Panel is Charging Battery: A ...

Learn how to check if solar panel is charging battery in this in-depth guide. Expert tips for solar energy users to ensure efficient power supply.



Fire Safety Procedures for Photovoltaic Systems and ...

This includes how to handle any fire emergency at a structure with solar photovoltaic panels and battery storage; basic electrical and photovoltaic ...



Testing Solar Panels - 4 Ways ,Output, Amps & Wattage

To determine how near to the maximum output the measured current is, compare it to the panel's maximum power current (I_{mp}). Remember that panels normally produce ...



[How to Test Solar Panels: Output, Amps & Watts](#)

Adjust the tilt angle of your solar panel until you find the max current reading and compare this number to the short circuit current (I_{sc}) listed on the back of your panel.

How to Check if Solar Panel is Charging Battery: A Complete ...

Learn how to check if solar panel is charging battery in this in-depth guide. Expert tips for solar energy users to ensure efficient power supply.





How to read PV voltage and current

In order to read the solar panel Voltage and Current values on the Enlighten, you will have to navigate to the graph view and have to select a particular ...

6. Troubleshooting Guide

The voltage of the battery or the PV terminals needs to be above the minimum voltage as specified in the technical specifications chapter. For instructions on ...



[How to Test a Solar Panel Voltage and Current](#)

See how to test your solar panel for open voltage and current reading. Results will vary depending on sun strength, time of day, angle of light and temperature.

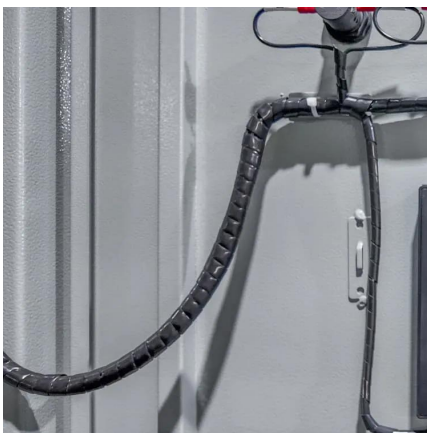
[HOW TO TEST A PV MODULE WITH A VOLTMETER?](#)

Testing a photovoltaic (PV) module with a voltmeter is a straightforward process that ensures your solar panels are functioning correctly and efficiently. Regular testing can ...



[How to Test Solar Panels: Output, Amps & Watts](#)

See how to test your solar panel for open voltage and current reading. Results will vary depending on sun strength, time of day, angle of light and temperature.



HOW TO TEST A PV MODULE WITH A ...

Testing your PV module with a voltmeter is an essential skill for maintaining your solar system. By regularly measuring the open-circuit voltage ...



[Solar Panel Diagram and Its Components Explained](#)

Photovoltaic cells are at the core of the system, responsible for capturing light and transforming it into direct current (DC) electricity. These cells are typically made from silicon, chosen for its ...





How to Test a Solar Panel: A Simple Step by Step ...

When checking the current output, adjust the multimeter setting to measure DC amps and connect the leads properly to measure the current ...



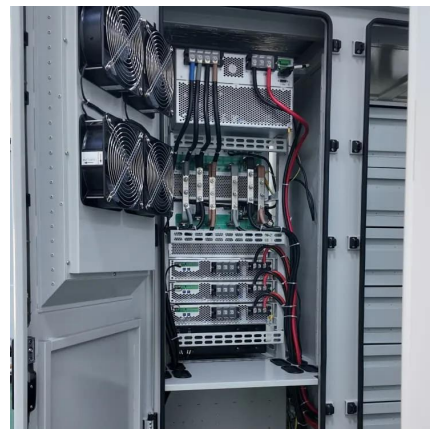
A Step-by-Step Guide of Debug PV Grid-Tied Cabinet

Whether you're an installer, engineer, or PV system owner, this article provides clear and actionable steps to ensure your grid-tied PV cabinet ...



How to read PV voltage and current

In order to read the solar panel Voltage and Current values on the Enlighten, you will have to navigate to the graph view and have to select a particular microinverter to see its DC Voltage ...



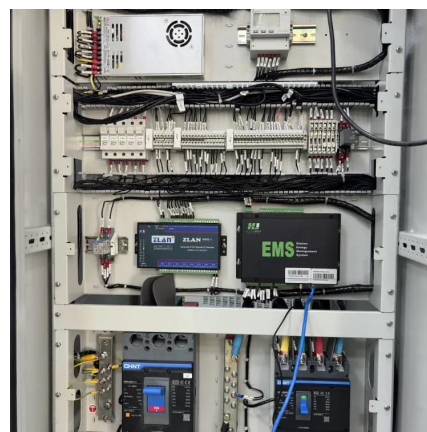
An Introduction to Inverters for Photovoltaic (PV) ...

An Introduction to Inverters for Photovoltaic (PV) Applications This article introduces the architecture and types of inverters used in photovoltaic ...



[How to Test Solar Panels: Output, Amps & Watts](#)

Learn how to test solar panels with and without a multimeter. We cover testing and measuring solar panel output, watts, amps, and voltage.



Calculating Current Ratings of Photovoltaic Modules

In my previous article on photovoltaic (PV) systems ("The Highs and Lows of Photovoltaic System Calculations" in the July 2012 issue), I went ...

How To Check Your Solar Panel & Regulator/Controller , Select ...

Measure the operating current by connecting the +ve from the multimeter to the positive cable from the regulator, and the -ve from the meter to the positive battery terminal. This measures ...



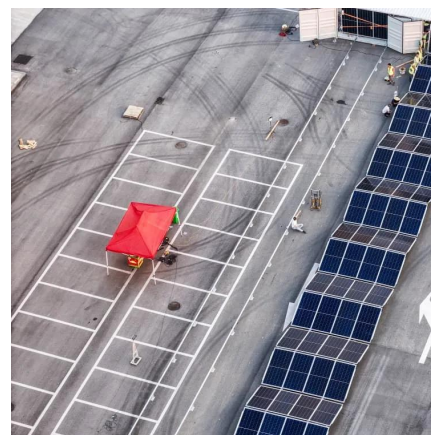


How To Check If The Solar Panel Is Charging Battery

For current, a positive reading (e.g., five mA or 0.5 A) indicates that the solar panel is delivering current to the load or battery. If you see no ...

Production line of Silent Power Off-Grid Cabinets

Silent Power cabinet is the first solar photovoltaic cabinet that is delivered fully assembled with all the protection and monitoring devices ...



Contact Us

For catalog requests, pricing, or partnerships, please visit:
<https://www.talbert.co.za>