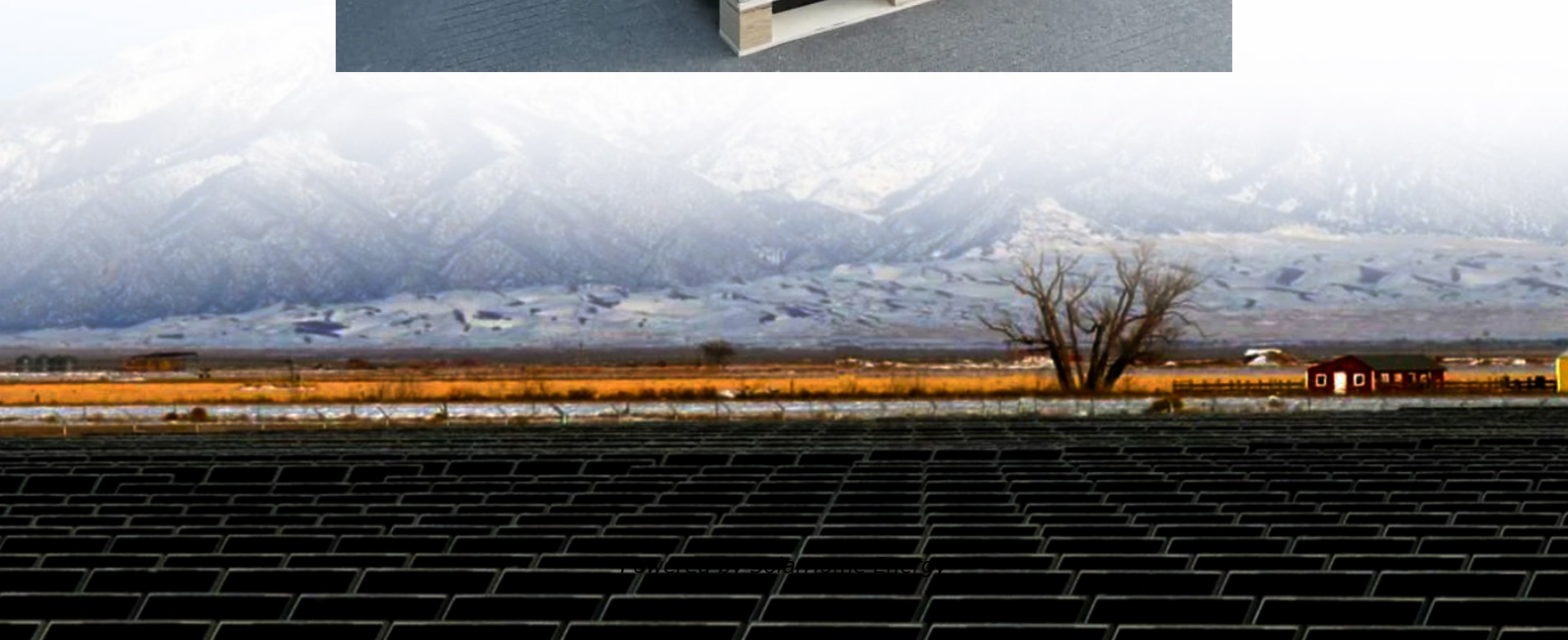


How to check the production time of battery cabinet





Overview

How do I know if a battery has a manufacturing date?

The manufacturing date code can be found on the battery label or packaging, usually in the form of alphanumeric characters. The format of the code may vary depending on the manufacturer, but it typically follows a similar pattern. The first character often represents the month of production, with a letter assigned to each month.

How do you know if a battery has a manufacturing code?

The manufacturing code for batteries can typically be found on the battery itself or on its packaging. It is usually a combination of letters and numbers that indicate the date of production. By decoding this code, you can determine when the battery was manufactured. What does the battery expiration date code mean?

.

What is a manufacturing date code on a battery?

The manufacturing date code on a battery provides information about the date it was produced. This code is typically a combination of letters and numbers that signify the manufacturing plant and the date of production. By checking the manufacturing date code, you can determine how fresh or old the battery is.

How do I find the date code on a battery?

While different manufacturers may have different coding systems, there are some common ways to find the date code on a battery. One way to find the date code on a battery is to look for a shipping or production date. This information is often printed on the battery's label or etched onto its casing.

How does a battery date code work?



Manufacturers use specific coding systems to indicate the date of production, ensuring that consumers can easily identify the age and lifespan of the battery. The manufacturing date code can be found on the battery label or packaging, usually in the form of alphanumeric characters.

Where do you find a battery manufacturer date?

Where to find it: For smaller household batteries, such as AA or AAA, the manufacturing date is usually found on the bottom of the battery or wrapped around the side near the barcodes. Some batteries also have it printed directly on the wrapper or the packaging if it's a fresh batch.



How to check the production time of battery cabinet



Eaton 93PM Integrated Battery Cabinet-Large and Large ...

Read all instructions before operating the equipment and save this manual for future reference. Ce manuel comporte des instructions importantes que vous êtes invité à suivre lors de toute ...

Understanding the Lithium

In the realm of lithium - battery production and quality control, the lithium - battery aging cabinet plays a crucial role. But what exactly is it? A lithium - battery aging cabinet, also ...



Mass production of battery swapping cabinets!

Hexup Battery Replacement Cabinet Production Factory is a highly modern manufacturing environment that focuses on the production and assembly of battery replacement cabinets for electric vehicles

BC Series UPS Battery Cabinets

The cabinet should be placed where it will be mounted, holes marked and 0.75 size bolts placed for anchoring the cabinet. It may be



necessary to remove the bottom tray with batteries from ...



Batteries4pro

Learn how to decipher battery ship, manufacturing, expiration, and production date codes for better battery management and performance.



Battery Ship Date Code

Learn how to decipher battery ship, manufacturing, expiration, and production date codes for better battery management and performance.



Battery cells to high-voltage battery cabinets! Factory live production

??Explore the core production line of the energy storage factory! ?From battery cell sorting, module welding to cabinet integration, the precision manufact





Prevent fire damage caused by lithium-ion batteries , Batteryguard

Batteries of e-bikes and tools can spontaneously catch fire , Charge lithium-ion batteries in a safe battery cabinet , Batteryguard

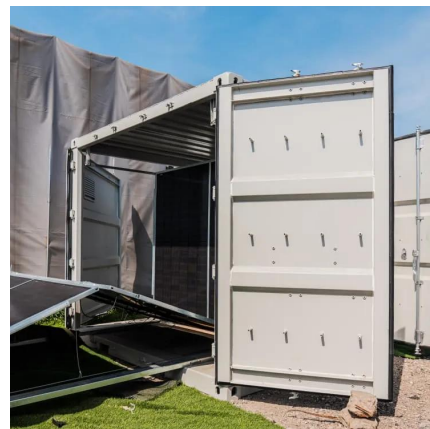


The Ultimate Guide to Battery Charging Cabinets: ...

Understanding the Importance of Battery Charging Cabinets Lithium-ion batteries power many of our everyday devices, from industrial machinery to personal ...

[how can I determine battery production date?](#)

I have batteries (12V 110Ah gel deep cycle) labeled "BAT412101100" and "1410" can I determine production date from these numbers?



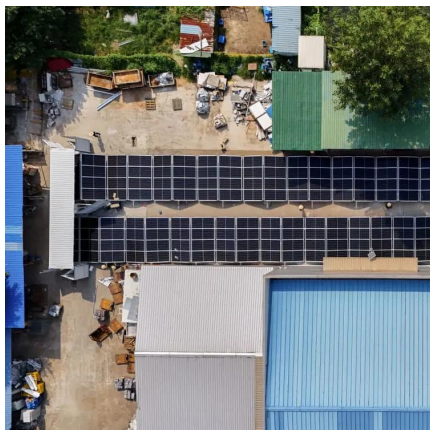
How to check the battery production time in the communication ...

Why do we need a battery test procedure? Embracing these methods and procedures allows the user to obtain maintenance and test data indicating the current battery system condition and ...



UPS Battery Cabinet Upgrade, Retrofit, Replacement

UPS Battery Upgrade, Retrofit, and Replacement
At Mitsubishi Electric, we have the products and expertise to guide you through battery and battery cabinet/rack decisions to promote the life ...



[How to Check Battery Manufacturing Date](#)

Learn how to check the manufacturing date of your battery to ensure reliability and optimal performance in this guide.

[How Are Cabinets Made? Unveiling the Full Process](#)

The cabinet manufacturing process starts with meticulous planning and design. Using advanced CAD software, designers create detailed layouts that ...





[How to Create a Workshop Setup for Batch ...](#)

Create the perfect workshop for cabinet batch production. Our guide shows how to organize your space, select tools, and implement quality ...

How To Check Car Battery Manufacture Date? - Guide

Conclusion A car's battery plays a significant role in its performance. And choosing the one that goes on for a long time is a difficult task in itself. Mostly, ...



[Universal Battery Date Code Chart, Battery Tools](#)

What is a Universal Battery Date Code Chart? A universal battery date code chart is a system used by manufacturers to indicate the date a battery was produced. The code is a series of ...



[UBC87 Battery Cabinet Installation, Operation.](#)

Whether the Battery Cabinet is empty or partially assembled, it should be located, mounted and properly grounded prior to final assembly as instructed in this manual in sections 6.2.1, 6.2.2 ...



How to correctly install lithium battery energy storage ...

Choose the correct installation location for your lithium battery energy storage cabinet First of all, we must determine the environmental ...



Understanding the Lithium

Modern lithium - battery aging cabinets are capable of continuously monitoring and recording key battery parameters during the aging process. Parameters like voltage, current, ...



lithium batteries How to check the production date

First, through the battery shell to check the production date. The production date of lithium batteries can usually be found on the battery casing. Some battery manufacturers will ...





Data Sheet

The ZincFive UPS Battery Cabinet is the world's first NiZn (Nickel-Zinc) BESS (Battery Energy Storage Solution) product with backward and forward compatibility with megawatt class UPS ...



Batteries4pro

The date of manufacture is noted in most cases with the month and year, preceded by "PD" Production date. These dates are engraved or printed on the side of the battery.

Choosing the Right Battery Storage Cabinet: A ...

Discover essential considerations when selecting a battery storage cabinet for lithium-ion batteries. Learn about ventilation, fire safety, ...



Battery cabinet with extra options

Battery cabinet with extra options Batteryguard battery cabinets are actually solid fire-resistant safes, so you can be certain that any battery fire will never be ...



Contact Us

For catalog requests, pricing, or partnerships, please visit:
<https://www.talbert.co.za>