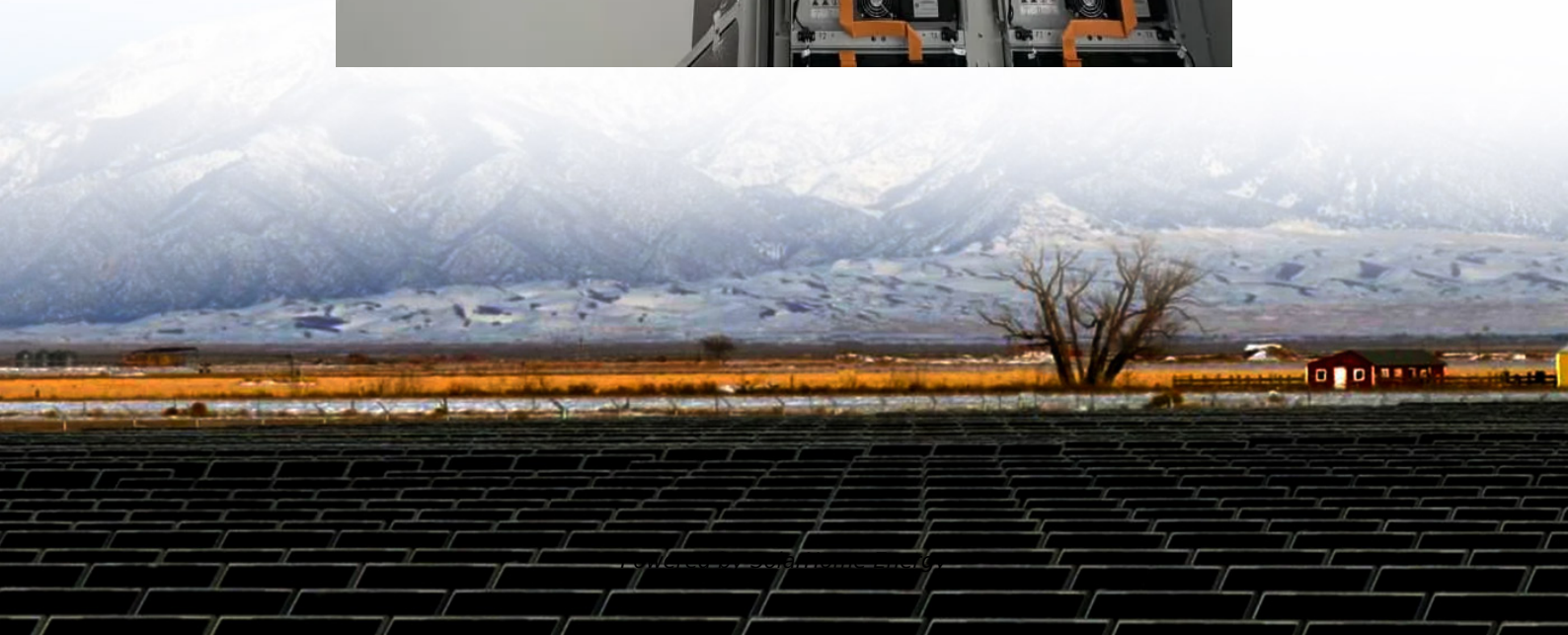


How to check the power supply size of the base station





Overview

What is a portable power station size calculator?

This Portable Power Station Size Calculator is a simple yet powerful tool that helps you determine the ideal power station capacity for your needs. By inputting your devices' total power consumption, desired runtime, and power station efficiency, you'll get an accurate estimate of the required capacity in Watt-Hours (Wh).

How to choose a portable power station?

The next step is to consider the capacity of the portable power station. The capacity of the power station will determine how long it can run your devices. Capacity is measured in watt-hours (Wh) and indicates how much electricity the portable power station can store.

How do I calculate the required power station size?

The calculator uses the following formula to determine the required power station size: $\text{Required Capacity (Wh)} = \frac{\text{Device Power (W)} \times \text{Runtime (hours)}}{\text{Efficiency}}$
 $\text{Required Capacity (Wh)} = \frac{\text{Efficiency} \times \text{Device Power (W)} \times \text{Runtime (hours)}}{\text{Efficiency}}$ Where: Device Power (W): The total power consumption of all devices in watts.

What size power station do I Need?

Example 2: "You need a power station with at least 1466.67 Wh capacity. Determine the appropriate size of a power station to run lights, fans, and small appliances overnight during camping trips. Ensure you have a power station capable of running essential devices, like CPAP machines or communication devices, during extended outages.

How do I know if my PSU is a power supply?

Once you can see the PSU, locate the label attached to the outside of the PSU housing. The label will display various technical specifications. Look for



information such as the wattage (expressed in watts), input voltage range (e.g., 100-240V), and amperage ratings for each voltage rail (3.3V, 5V, and 12V).

What should you consider when buying a power station?

Aside from the capacity and output wattage, you'll also need to consider portability and other features of the power station. Some power stations are designed to be lightweight and portable, making them easy to carry around. Others may have additional features such as built-in AC outlets, USB ports, and even solar panels.



How to check the power supply size of the base station

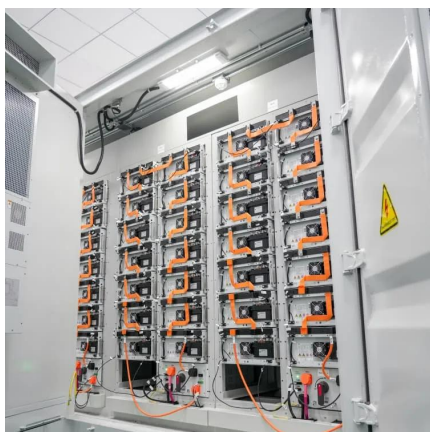


Getting Started in Ham Radio

Safe and Convenient Power for your First Amateur Radio Station There's a lot to learn in the hobby of Amateur Radio but one of the first considerations should be how to power your ...

How Do I Connect Steam Base Stations? A Step-by-Step Guide

Check the power requirements: Before connecting the base stations, make sure you have the necessary power supply. Steam Base Stations typically require an outlet with a ...



How Do I Know What Size Portable Power Station I Need?

Therefore, the first question you will ask yourself about portable power stations is: What size do I need to fulfill my power requirements? Then, from here, follow your decision-making process. ...

Power Adapter Answers : r/Vive

A: For the most part, the important bit is the last measurement, which is the barrel connector's interior diameter (also called the-size-of-the-



hole). A "5.0mm x 2.1mm" will work ...



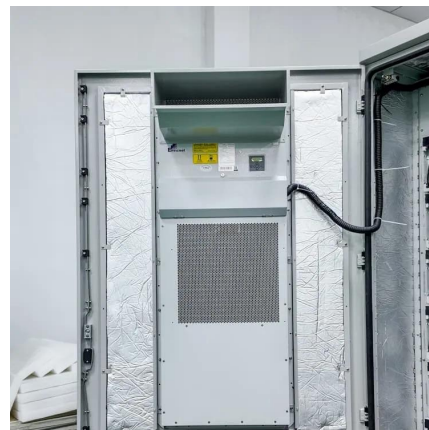
Choosing the right size power supply for your radio

How do you power a mobile radio for use as a base station? Get a power supply. But this isn't a cut and dry, one-size-fits-all sort of thing. Here's ...



Power supply for base station.

I want to power a 25 watt radio I already have a power supply for my radio . I just want a back up supply that way I have a way to run my radio when the electric goes out. I ...



MTR3000 Base Station/Repeater and Satellite Receiver

The Power Supply module in the base station/repeater provides DC power to the Receiver, Exciter, SCM and Power Amplifier module via one or more of the three DC output taps; 28.6 ...





Spectralink IP-DECT Base Station

The Spectralink IP-DECT Base Stations can be powered by Power Over Ethernet (POE) IEEE 802.3af or via an external power supply. Each Spectralink IP-DECT Base Station has 12 ...



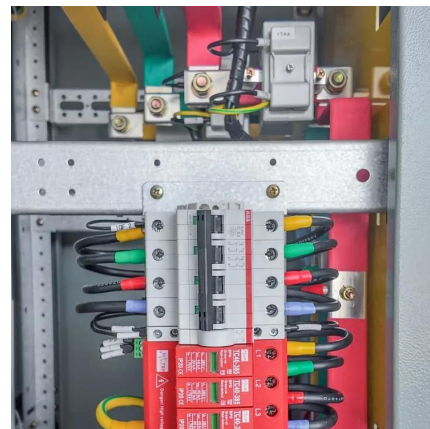
[Portable Power Station Size Calculator](#)

The Portable Power Station Size Calculator is a powerful and user-friendly tool designed to help users determine the ideal size of a portable power station they need.

[How To Tell PSU Without Opening The Case](#)

Fortunately, there are several methods you can use to identify your PSU without having to physically access the internals of your computer.

...



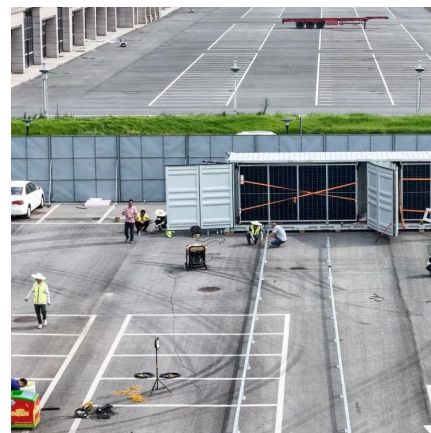
Power Station sizing and buying guide , ELECTRICBIKE

The Portable Power Station Size Calculator is a powerful and user-friendly tool designed to help users determine the ideal size of a portable ...



How to Select the Right Size Portable Power Station For Your ...

Sizing a portable power station is far more simple than you might imagine. Below is our six-step process we walk everyone through when trying to determine the best power ...

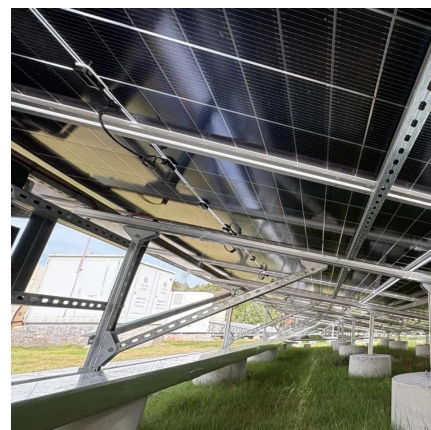


How Do I Know What Size Portable Power Station I ...

Therefore, the first question you will ask yourself about portable power stations is: What size do I need to fulfill my power requirements? Then, from here, follow ...

Power Adapter Answers : r/Vive

A: For the most part, the important bit is the last measurement, which is the barrel connector's interior diameter (also called the-size-of-the-hole). A "5.0mm x 2.1mm" will work just as well as ...



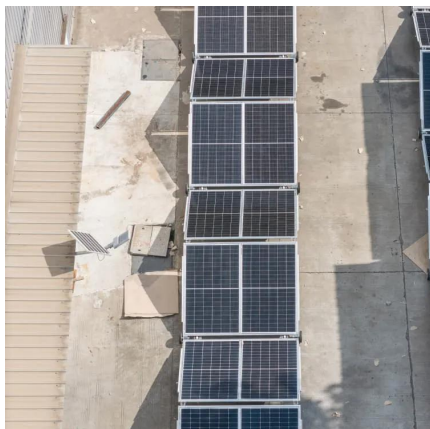


Power Station sizing and buying guide , ELECTRICBIKE

This article is a mildly technical article on how to correctly size your power station and how many solar panels you will need to keep the power station from draining too low.

Power Supply Solutions for Wireless Base Stations Applications

For this reason, battery backups and generators are installed in a wireless base station's power supply system to allow continuous operation under all circumstances.



Guide Reference Station NEU

It is advisable to consider installing a UPS (Uninterruptible Power Supply) unit to provide backup power for the computer running the reference station software.

CB Radio Base Station Equipment Recommendations and Advice

Keep in mind that, regardless of size, all CB radios have a power output of 4 watts as allowed by the FCC. If you select a radio without a built-in SWR meter, you will need an external SWR ...



How to Select the Right Size Portable Power Station For Your ...

Sizing a portable power station is far more simple than you might imagine. Below is our six-step process we walk everyone through when trying to determine the best power device for their ...



Power supply for base station.

Mobile radios are typically designed to operate on a 13.8 volt electrical system, which is what you have when the car's alternator is charging the battery. The range is usually ...



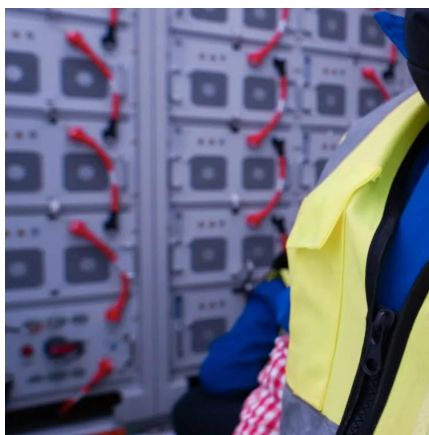
What is a Base Station?

The electromagnetic waves emitted by base stations and mobile phones are like air, filling us all around. Everyone knows mobile phones, however, the base station, the hero ...



How To Tell PSU Without Opening The Case

Fortunately, there are several methods you can use to identify your PSU without having to physically access the internals of your computer. These methods range from ...



How to Determine the Right Size Portable Power Station for Your ...

The first step in determining the right size portable power station is understanding your power needs. Portable power stations are designed to supply power to various devices, ...

How To Replace Base Station Batteries , SimpliSafe Support Home

Once you have acquired the necessary NiMH rechargeable batteries, you can follow the steps below to replace them: Ensure your system is disarmed Unplug your Base Station from power ...



5G Base Station

The main energy consumption of 5G base stations is concentrated in the four parts of base station, transmission, power supply and computer ...



How to Size a Portable Power Station

Luckily, there are formulas to help. Here are all the tools you need to help you find the right size portable power station for your needs.

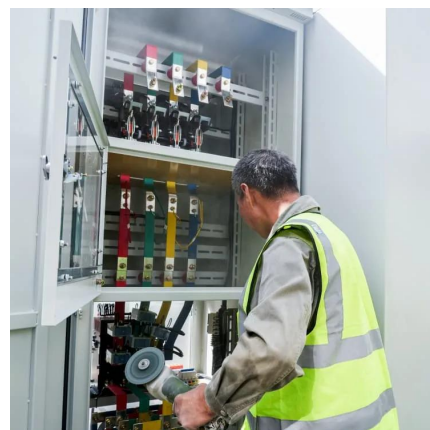


?Changing batteries in base station , SimpliSafe Support Home

You have to remove the power cord which will reveal a single screw on the base station. Unscrew that and the bottom of the base station will turn freely and unlock.

How to See What Power Supply I Have on Windows 11: A Guide

Struggling to identify your PC's power supply on Windows 11? Our guide walks you through simple steps to quickly find out what you need to know.





Communication Base Station Energy Solutions

The Importance of Energy Storage Systems for Communication Base Station With the expansion of global communication networks, especially the ...

Contact Us

For catalog requests, pricing, or partnerships, please visit:
<https://www.talbert.co.za>