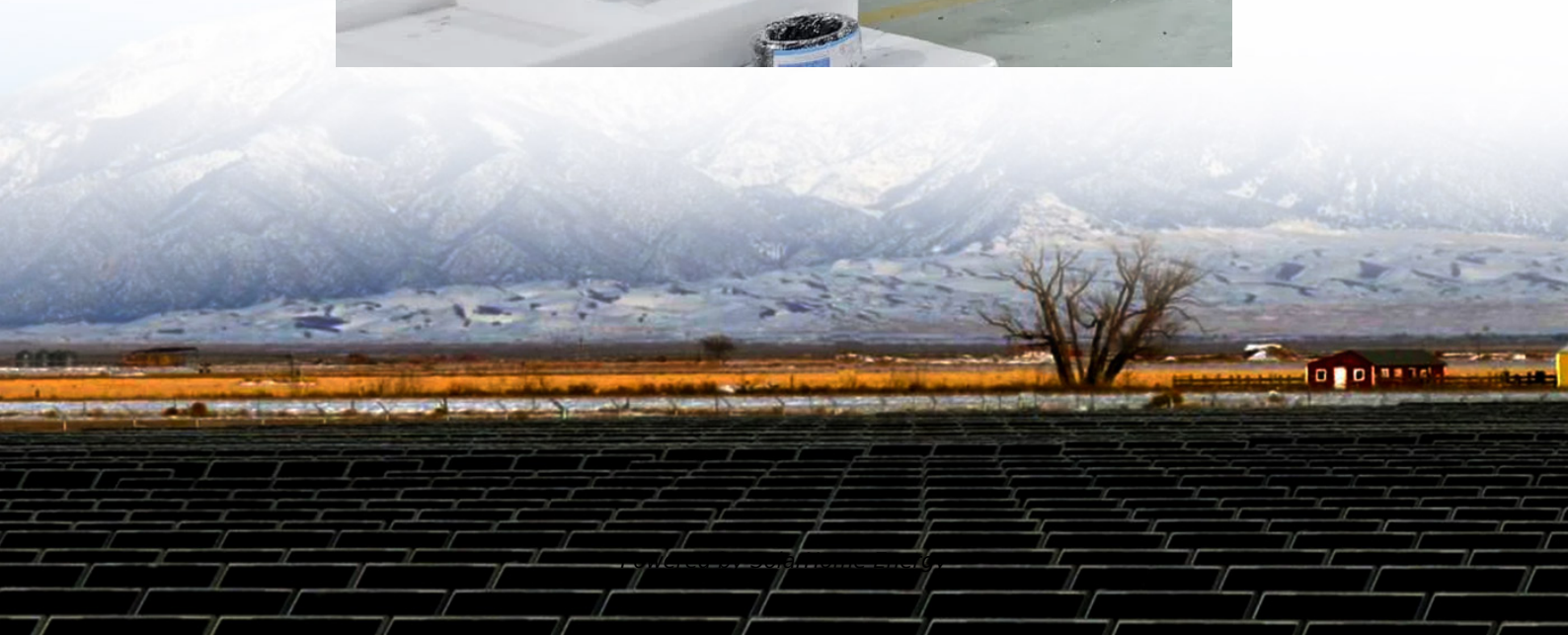


How to change the output power of the battery cabinet





Overview

How do I connect a battery cabinet to my ups?

If external battery cabinets are attached, close the breakers on the rear of each cabinet. Power-on the UPS by pressing and holding the power button on the operation and display panel until the confirmation dialog appears. Use the Up/ Down arrows to select YES, then press Enter.

How do you connect a battery to a cabinet?

Route the ground bond wiring from the battery cabinet's ground bond bolt, through the cabinet-to-cabinet wiring pass through to the adjacent cabinet's ground bond bolt. 9. Connect the ground bonding wiring to the bolt and torque the ground bond wiring bolts to 10 Nm (7.38 lb-ft).

What is the difference between a ups and a battery cabinet?

The UPS is available in 50 or 60 Hz with various output power ratings while the battery cabinet is available with 16 battery modules. The table below depicts the system model numbers and the stored energy capacity of the system. The End of Discharge Voltage limit for each battery cabinet for all models is 400.8V DC. Table 3.

Where should a battery cabinet be installed?

If the battery cabinet is installed adjacent to the UPS, the recommended installation location for the battery cabinet is on the right side of the UPS cabinet. This location will allow for future expansion using an external module. Cabinets can be permanently bolted to the floor or left standing on leveling feet.

How do I move the Eaton Samsung Gen 3 Battery Cabinet?

For the Eaton Samsung Gen 3 Battery Cabinet, insert the forklift or pallet jack forks between the supports on the bottom of the pallet. If the cabinets must be moved using the cabinet front or rear fork lift slots, see the caution



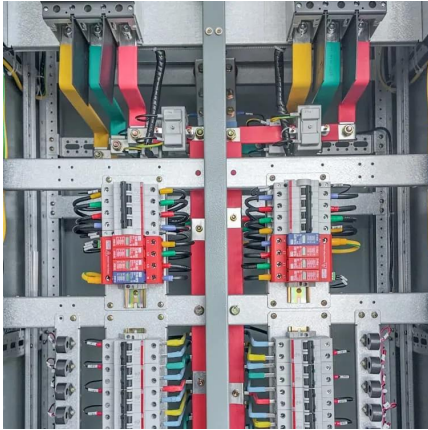
statement at the beginning of this procedure.

What clearances are required around a battery cabinet?

The clearances required around the cabinets are to be followed from UPS ("Installation Plan" section) and battery cabinet manuals ("Installation Plan and Unpacking" section). As a result of the connected loads high leakage current is possible. Connection to earth ground is required for safety and proper product operation.



How to change the output power of the battery cabinet

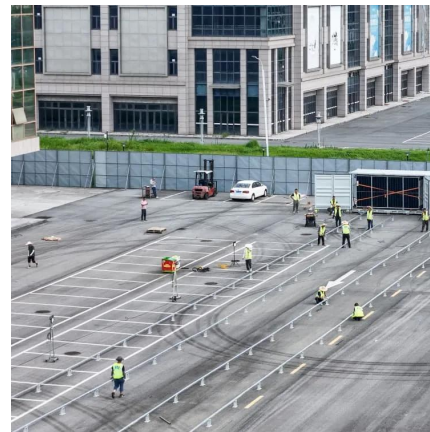


[Battery cabinets , Legrand Data Center Solutions](#)

Battery cabinets Legrand offers universal battery cabinets for all three-phase Legrand Uninterruptible Power Supply (UPS) models ranging from 10kVA to 800kVA power output. ...

Battery Cabinets

Battery Cabinets Battery Cabinets Outdoor custom battery cabinets Available 24V, 48V, and 120V solutions For flooded and VRLA batteries Ground mount or pole mount options available ...



[Parallel Redundant Uninterruptible Power Supply](#)

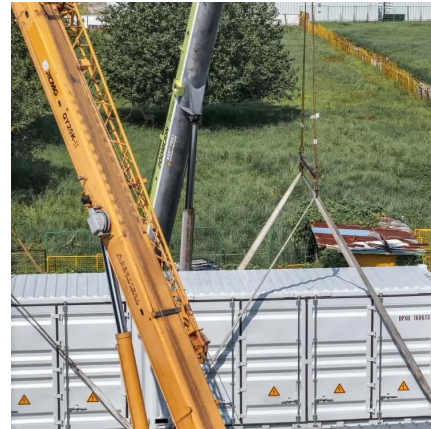
The parallel redundant system refers to the parallel cabinet in conjunction with the UPS modules. The parallel redundant system consists of one parallel cabinet, two identical UPS cabinets, ...

User's Guide UPS 20

A parallel UPS system means the linking together of two or more UPS units in parallel so that in the unlikely event one fails the other can



automatically take up the load. Traditionally a parallel ...



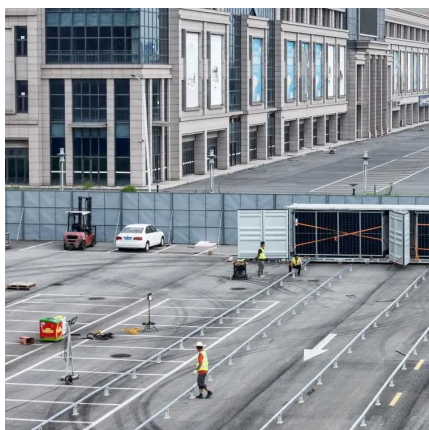
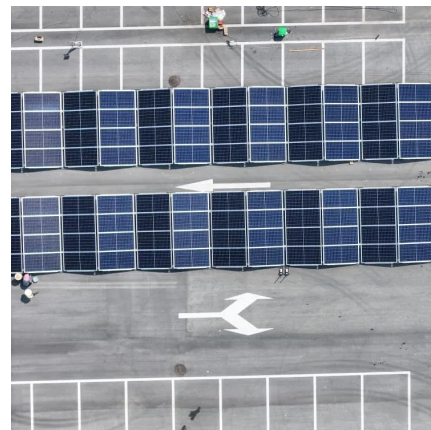
[UBC87 Battery Cabinet Installation, Operation.](#)

Install the main POS and NEG cables from the output circuit breaker to the correct battery posts on the designated battery units shown in the provided battery system schematic.



How to Change USB Power Settings in Windows 11: A Step-by ...

How to Change USB Power Settings in Windows 11 In this section, we will walk you through the steps required to change the USB power settings on your Windows 11 device. ...



4400 SERIES BATTERY CABINET

The battery cabinet is equipped with narrow pallet jack or forklift access openings in the front and rear of the cabinet. Move the equipment into the desired location and set in place.



Eaton 93PM L (208V) UPS and Samsung Gen 3 Battery ...

This manual contains important instructions that you should follow during installation and maintenance of the UPS. Please read all instructions before operating the equipment and save ...



Liebert® GXT5 Installer/User Guide

If mains/utility power is present, the UPS control circuit remains active even though output power is disabled. To remove all mains/utility power, disconnect the external main-input MCB.



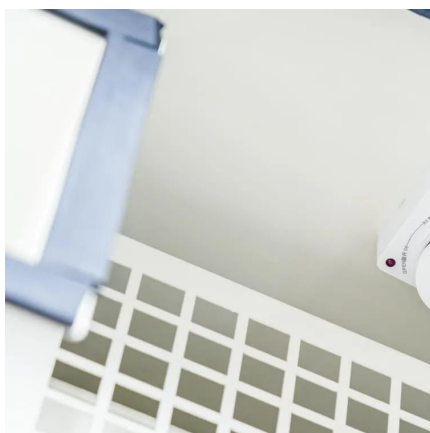
[Vertiv™ Liebert® ITA2 Battery Cabinet](#)

For detailed installation, operating, maintenance and troubleshooting information visit the Liebert ITA2 product page for the Liebert ITA2 Battery Cabinet Installer/User Guide available at ...



Mitsubishi Electric Power Products, Inc. BC43 Battery ...

Battery cabinets that are not supplied with an incorporated DC output disconnect device must have an appropriate disconnect device provided external to the cabinet.



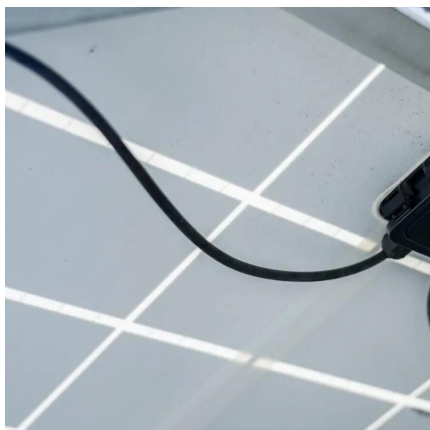
Eaton 93PM L (208V) UPS and Samsung Gen 3 Battery ...

Disclaimer: Battery cabinet by itself is under the guarantee of Samsung which also has battery management system. The battery management system (BMS) is one component which ...

[Vertiv Liebert® APM2 Modular EBC User Manual](#)

After the battery cabinet and the UPS power cabinet are aligned, open the front door panel of the UPS power cabinet. Use M10 x 30 screws (2 quantity) to connect and fasten the battery ...



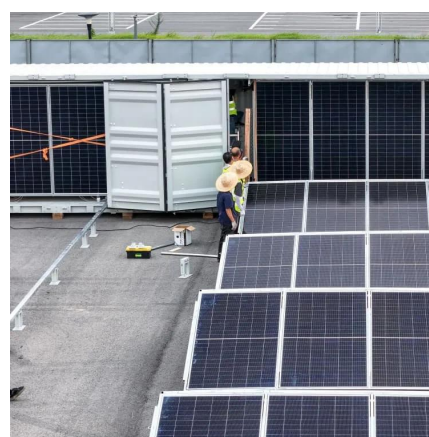


Liebert® Maintenance Bypass Cabinet Installer/User Guide

4 PREPARATION These installation instructions provide all the information needed for positioning the Maintenance Bypass Cabinet (including environmental requirements) and for connecting ...

164201687_1085_Rev_4_Web

This manual contains important instructions that you should follow during installation and maintenance of the UPS and batteries. Please read all instructions before operating the ...



Liebert® EXS External Battery Cabinet Installer/User Guide

After replacing battery jars in a battery cabinet, replace the retaining straps that hold the jars in place on the shelves. This will limit accidental movement of the jars and connectors should the ...

4400 SERIES UPS Battery Cabinets

Verify the Battery Cabinet MCCB is OPEN and there is no voltage on the + / - output terminals before connecting the power cables between the UPS and Battery Cabinet.



Installer/User Guide

The Liebert APS MBC (maintenance bypass cabinet) is designed for commercial/industrial use only. It is not intended for use with life-support or other designated critical devices. Maximum ...



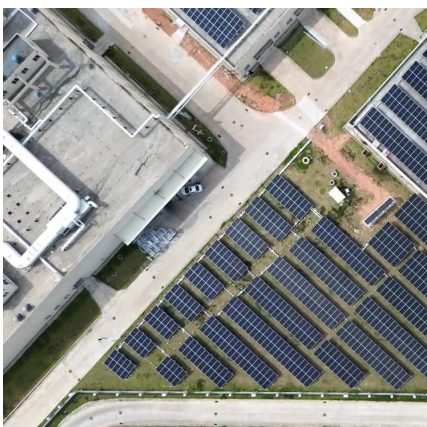
Battery Cabinet

When replacing batteries, replace with the same type and number of batteries or battery packs. Note: Atlantic Battery uses several battery manufacturers. Contact Atlantic Battery when ...



BC58 Battery Cabinet Installation, Operation, & Maintenance ...

When installing this power system, follow all applicable federal, state and local regulations as well as industry guidelines to insure proper system installation.





Eaton 9390 Integrated Battery Cabinet (Models IBC-S and ...

The Integrated Battery Cabinet (IBC) systems are housed in single free-standing cabinets. Two models are available: Model IBC-S (small cabinet) and Model IBC-L (large cabinet). Each ...

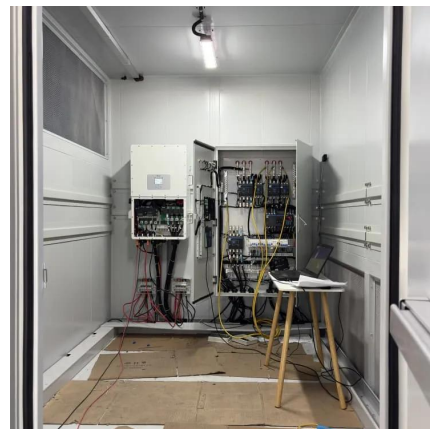


Battery Cabinet

This manual contains information on Atlantic Battery Systems battery cabinets. The information in this manual is intended for Qualified Installers, Equipment Engineers, and Field Support ...

Liebert® EXS External Battery Cabinet Installer/User Guide

This manual contains important instructions that should be followed during installation of your Vertiv™ Liebert® EXS Battery Cabinet and accessories. Read this manual thoroughly, paying ...



Contact Us

For catalog requests, pricing, or partnerships, please visit:
<https://www.talbert.co.za>