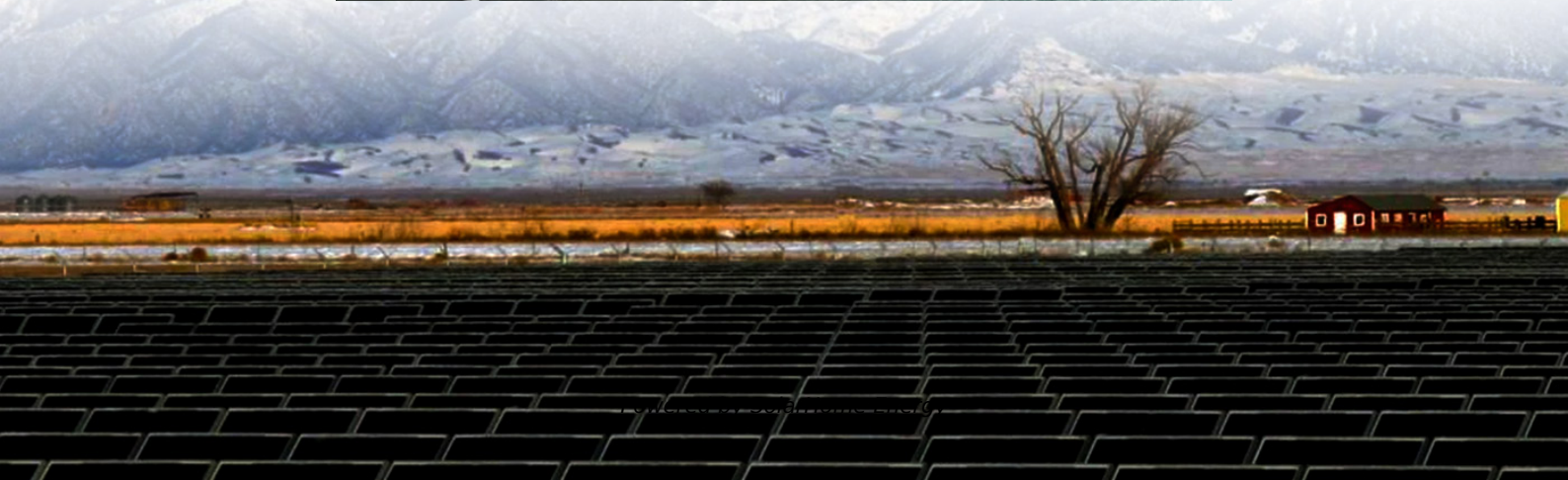
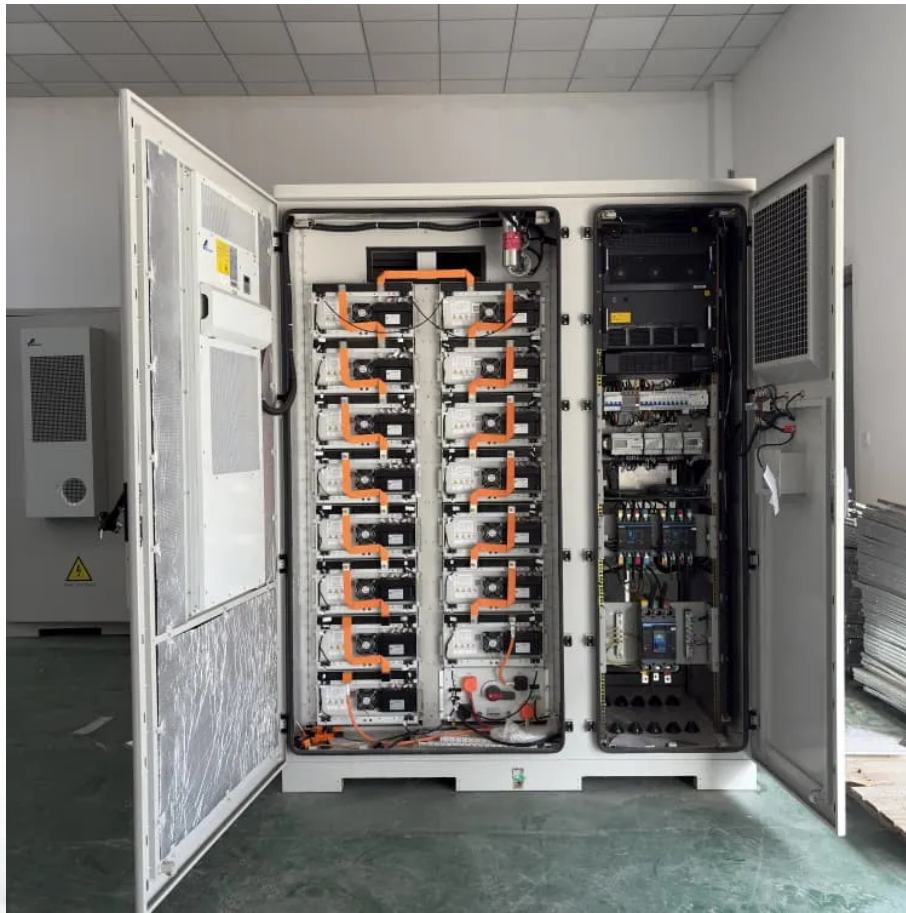


How much voltage should a 7 4v lithium battery pack be charged with





Overview

What voltage is a 7.4 volt LiPo battery fully charged?

A 7.4 volt LiPo battery is a 2-cell battery, and its nominal voltage when fully charged is 8.4 volts. However, its actual voltage when fully charged can vary between 7.6 volts and 8.4 volts, depending on the type and capacity of the battery. How many volts can a life battery pack charge?

The charging circuit is only designed to charge 2x 3.7V Li-ion 18650 or 2x 3.7V Li-Poly batteries (2s 7.4v Lipo battery pack), the nominal battery voltage is 3.7V, the charged voltage is 4.2V/Cell. Do not use LiFE battery packs or 18650 lithium-ion batteries with a nominal voltage of 3.6v with a fully charged voltage of 4.10V.

What is the voltage range of a 7 4 volt lithium battery?

The voltage range of a 7.4 V lithium battery is generally as follows: Nominal voltage: 7.4V. This is the voltage output by the battery under ideal conditions, usually marked on the battery. Full voltage: about 8.4V. When the battery is fully charged, the voltage will reach its highest value, generally around 8.4V. Low voltage: about 6V.

How many volts does a battery need?

When fully charged, the voltage reaches 8.4V (4.2V per cell), while discharging below 6.0V (3.0V per cell) can damage the battery.

What voltage should a lithium battery be charged at?

Discover the optimal charging voltages for lithium batteries: Bulk/absorb = 14.2V–14.6V, Float = 13.6V or lower. Avoid equalization (or set it to 14.4V if necessary) and temperature compensation. Absorption time: about 20 minutes per battery. Ensure safe and efficient charging to master battery care and optimize performance.

Can I use a lithium ion battery pack?



Do not use LiFE battery packs or 18650 lithium-ion batteries with a nominal voltage of 3.6v with a fully charged voltage of 4.10V. Charging the incorrect type of battery may damage the charger or cause a fire.

What is a 7.4v Li-ion battery?

A 7.4V Li-ion battery is also a rechargeable battery that uses lithium-ion chemistry. Li-ion batteries are similar to LiPo in voltage and capacity but have a more rigid, cylindrical shape. The 7.4V nominal voltage is typically achieved by connecting two 3.7V Li-ion cells in series.



How much voltage should a 7 4v lithium battery pack be charged with

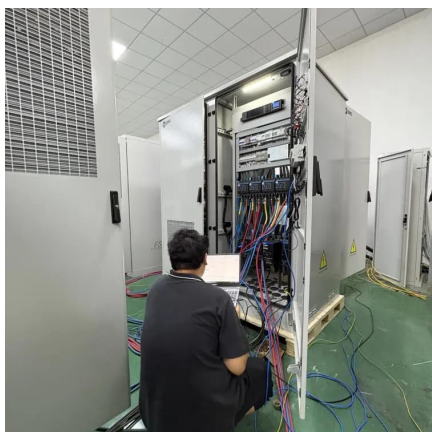


What is the minimum required voltage for charging a 3.7 V Li-ion

But that's probably not the answer you're looking for, from Lithium-ion battery on Wikipedia: Lithium-ion is charged at approximately 4.2 ± 0.05 V/cell except for "military long ...

7.4V LiPos and cutoff voltage

A 7.4V lipo is basically fully discharged when it reaches 6V; full charge is 8.4V. For longest battery life, it should be no lower than 7.4V (3.7V per cell) after running your model ...



[What Should a 6-Volt Battery Read When Fully ...](#)

A fully charged 6-volt battery should read between 6.3V and 6.4V when measured with a multimeter. This slight increase above the nominal 6V ...

Optimal Charging Voltage for Lithium Batteries Guide

Discover the optimal charging voltages for lithium batteries: Bulk/absorb = 14.2V-14.6V,



Float = 13.6V or lower. Avoid equalization (or set ...



Understanding LiPo Battery Voltage for Optimal ...

Understand LiPo battery voltage ranges (3.0V-4.2V per cell) to enhance performance, extend lifespan, and ensure safety with proper ...



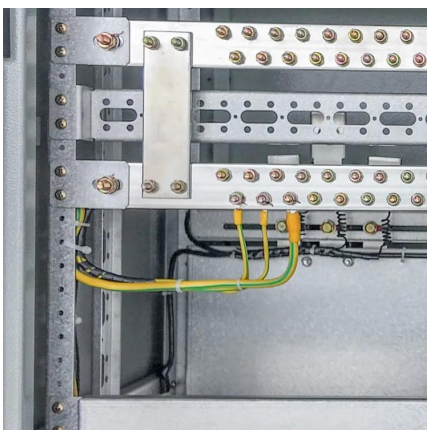
Everything About of 7.4V Battery

Fully Charged Voltage: About 8.4V. The voltage of each lithium cell of a 7.4V battery is about 4.2V when fully charged. Therefore, the fully charged voltage of a 7.4V battery ...



Comprehensive Guide to Lithium Battery Cell Voltage ...

Understand lithium battery cell voltage during charging and discharging, including safe ranges, cutoff limits, and how voltage impacts ...





Everything About of 7.4V Battery

Fully Charged Voltage: About 8.4V. The voltage of each lithium cell of a 7.4V battery is about 4.2V when fully charged. Therefore, the fully ...



[Lipo Battery Voltage Chart , Battery Tools](#)

What voltage is a 7.4 volt LiPo battery fully charged? A 7.4 volt LiPo battery is a 2-cell battery, and its nominal voltage when fully charged is 8.4 volts. However, its actual voltage when fully ...

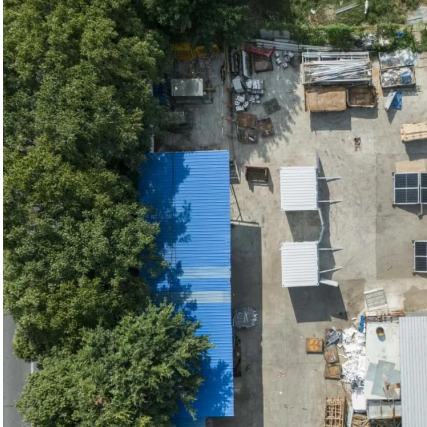
What is the right voltage for a Radiomaster battery 2S 7.4V

Do not use LiFE battery packs or 18650 lithium-ion batteries with a nominal voltage of 3.6v with a fully charged voltage of 4.10V. Charging the incorrect type of battery may ...



[All About LiPo 2S Batteries: A Comprehensive Guide](#)

What Are the Key Specifications of LiPo 2S Batteries? Key specs include voltage (7.4V nominal, 8.4V fully charged), capacity (measured in mAh), discharge rate (C-rating), and ...



What cell voltage should I use to charge a 2S 7.4 V LiPo battery?

7.4V is the nominal voltage, LiPo will drop voltage quickly and stabilize at 3.7V when in use. The 7.4V or a multiple of 3.7V label must be used if you want to sell it in the US ...



[Charging 7.4V Li-Ion \(Transmitter\) Battery pack](#)

Again, cell voltage for any li-ion/lipo battery is 3.7V nominal (or storage voltage, though anything between 3.7-3.85V is fine) and 4.2V fully charged. The only exception to this ...

[How to charge 7 4 lithium ion battery](#)

What is a 7.4v Li-ion battery? A 7.4V Li-ion battery is also a rechargeable battery that uses lithium-ion chemistry. Li-ion batteries are similar to LiPo in voltage and capacity but have a ...





What cell voltage should I use to charge a 2S 7.4 V ...

7.4V is the nominal voltage, LiPo will drop voltage quickly and ...

What Voltage Should I Charge a Lithium-Ion Battery? Safe Levels ...

Lithium-ion batteries typically charge to 4.20V per cell, with a tolerance of $\pm 50\text{mV}$. Nickel-based varieties usually charge to 4.10V per cell. For high-capacity lithium-ion batteries, ...



What is the right voltage for a Radiomaster battery 2S 7.4V

Do not use LiFE battery packs or 18650 lithium-ion batteries with a nominal voltage of 3.6v with a fully charged voltage of 4.10V. Charging the incorrect type of battery may damage the charger ...

[Everything You Need to Know About 7.4V Battery](#)

When fully charged, the voltage reaches 8.4V (4.2V per cell), while discharging below 6.0V (3.0V per cell) can damage the battery.



Optimal Charging Voltage for Lithium Batteries Guide

Discover the optimal charging voltages for lithium batteries: Bulk/absorb = 14.2V-14.6V, Float = 13.6V or lower. Avoid equalization (or set it to 14.4V if necessary) and ...



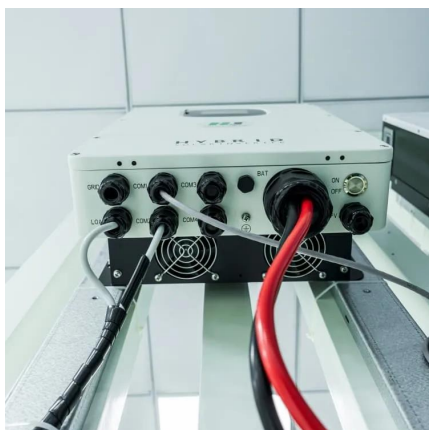
[Lipo Battery Voltage Chart , Battery Tools](#)

When fully charged, the voltage reaches 8.4V (4.2V per cell), while discharging below 6.0V (3.0V per cell) can damage the battery.



[Rechargeable 9V Batteries , 9 Volt Battery FAQ](#)

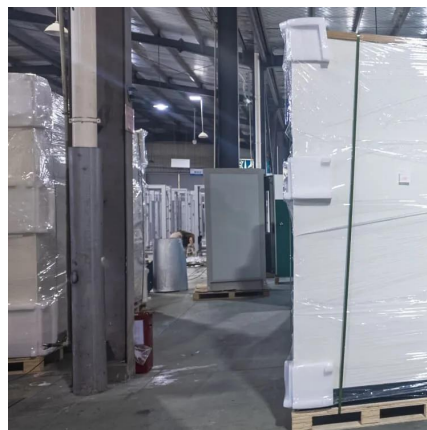
An alkaline 9V is really 9 volts, but a rechargeable "9V" battery is initially 9.6V, 8.4V, 7.4V, or 7.2V, depending on the model in question. In the rest of this discussion, "9V" refers to the 9V ...





7.4 V 3000 mA LiPo battery charging

I have a 7.4 volt 3 amp Lithium Polymer battery. Has three wires, Red (+), Black (-) and White (?). What's the white for? What's the proper way of charging it? Does the white ...



Charge a 7.4 Li-ion battery through micro USB port

No. USB is 5V; not high enough for charging a 7.4V lithium battery. That's a 2S battery which should be charged with a dedicated 2S balanced charger for safety. Such a ...

How much voltage do my batteries actually have?

Unloaded, 3.7V would be less than 50% charge, but at or about 50% under a load. Normally, the nominal voltage is always specified for batteries.
- Not the final charging voltage! ...



6V Battery Voltage Chart

For a fully charged 6v battery, you should see a voltage between 6.4V and 7.2V. Following these steps helps prevent common issues and ...



2S LiPo Battery: A Comprehensive Guide for Beginners

Voltage (V): A 2S battery has a nominal voltage of 7.4V. Capacity (mAh): Determines the battery's run time. C-Rating: Indicates the discharge rate. A higher C-rating ...



Ultimate LiPo Battery Guide: How to Safely Charge, ...

This LiPo battery guide shows how to handle, charge, store and dispose of your LiPos. Avoid dangerous mistakes that can lead to a damaged ...

What voltage should a 48V 50Ah LiFePO4 battery be when fully charged

A fully charged 48V LiFePO4 battery pack will typically reach a voltage of around 58.4V. It is critical to follow the instructions of the battery manufacturer, and to use a quality BMS and ...





[Lithium Battery Voltage Chart: Why Voltage Matters](#)

See why voltage matters and how to measure it for optimal performance on all lithium batteries with our guide on the lithium battery voltage chart.

Contact Us

For catalog requests, pricing, or partnerships, please visit:
<https://www.talbert.co.za>