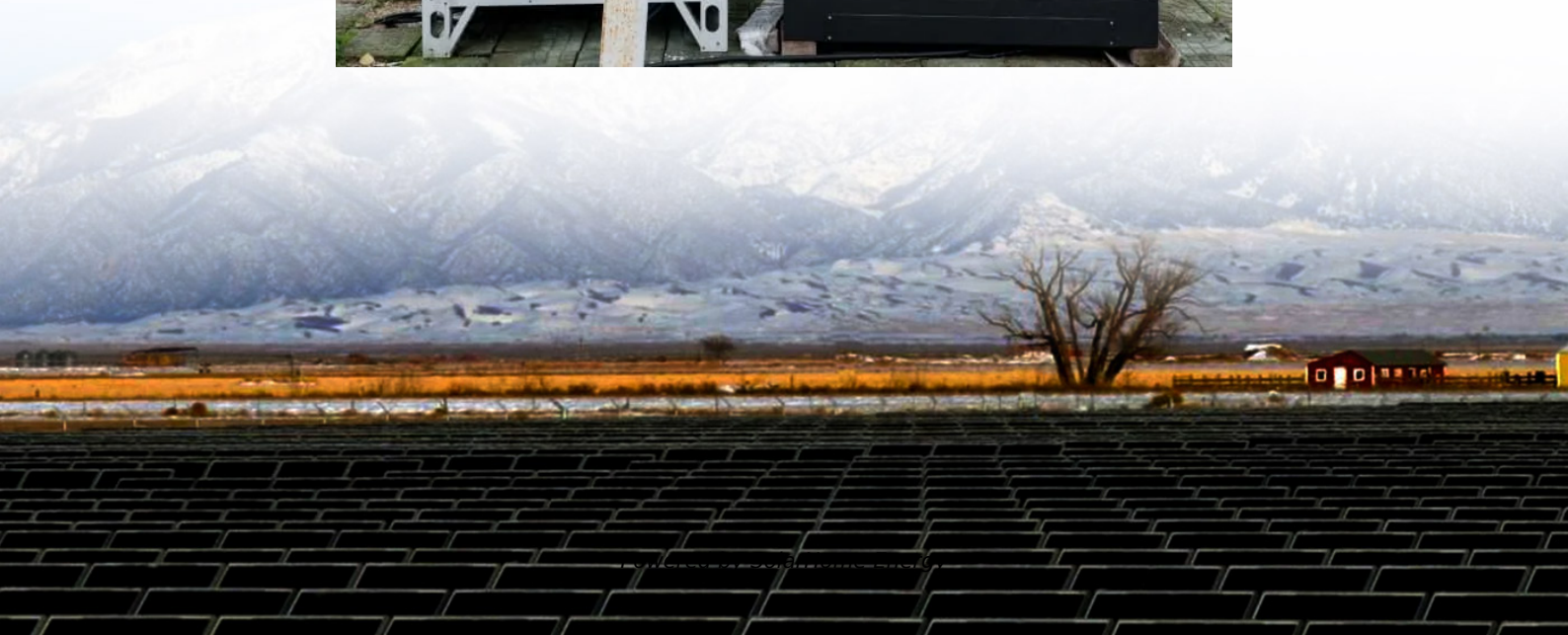


How much power does a 25 kW inverter have





Overview

Before we go any further, we highly recommend that you choose a pure sine wave inverter. This type of inverter delivers high-quality electricity, similar to your utility company. This way, none of your appliances run the risk of being damaged. Now, when it comes to sizing your inverter, you always need to check.

We have summarized the appliances that inverters from 300W to 3000W can run depending on their rated maximum power. Note to our readers: Use the above formula to determine.

The 25kW rating refers to the maximum power output capacity of the inverter, which indicates the amount of electricity it can convert and supply at any given time. There are several key features and considerations to keep in mind when choosing a 25kW off-grid solar inverter. Is a 10 kVA inverter enough?

For example, an inverter rated at 10 kVA with a power factor of 0.8 can only deliver 8 kW of real power. That means if your total appliance load is 10 kW, this inverter will not be enough.

How much power does a 5 kW inverter use?

If your system pushes 5,000 watts, a 5,000-watt (or 5 kW) inverter is usually the move. But it's not always one-to-one. Some setups undersize the inverter a bit—say, 4.6 kW for 5 kW of panels—to save cash without losing much power. It's a balancing act between cost, performance, and when you actually use electricity.

Why should you choose a solar inverter rated in kW?

Inverters must handle peak solar input, battery charging, and load output—all at once. Choosing an inverter rated in kW (not just kVA) gives you a clearer view of real usable power. This prevents undersizing and keeps your solar-storage system running efficiently.

Can a 25kW solar array be put on an inverter?

A 25kW solar array can be put with an inverter with an AC output of 18.75kW.



What you "can" do is not what you "should" do. All inverters have different specs. And based on those specs you might be able to put a LOT more panels on than the rated inverter capacity. That does not mean you should.

How big should a solar inverter be?

Choose wisely. Here's the cheat code: your inverter size should match your solar panel output. If your system pushes 5,000 watts, a 5,000-watt (or 5 kW) inverter is usually the move. But it's not always one-to-one. Some setups undersize the inverter a bit—say, 4.6 kW for 5 kW of panels—to save cash without losing much power.

What is the power factor of a solar inverter?

Most hybrid and solar inverters operate at a power factor between 0.8 and 1.0. The power factor directly impacts how much usable energy (kW) you can get from your inverter. If your inverter has a power factor of 0.9, then a 10 kVA inverter will deliver only 9 kW of real output. This means the inverter can only handle 10.2 kW of actual load—not 12.



How much power does a 25 kW inverter have



25kW Solar System Information - Facts & Figures

Inverters can be sized differently to your overall panel array. While your panel array might be 25kW, the inverter could be either less or more than this size. Normally it is bad to have a ...

How much power does a solar inverter have? , NenPower

A solar inverter typically has power ratings that range significantly, usually between 1 kW to over 10 kW. This variability depends on the inverter type, application, and the solar ...



Understanding Inverter Power Ratings: kW vs kVA ...

kW refers to the real or usable power output of an inverter. kVA represents the total power capacity it can carry, including power lost in phase difference ...

How Much Power Does Solar Inverter Use and How to Create the

...

Learn how much power a solar inverter uses and



get practical tips on designing the ideal solar power project. From understanding inverter efficiency to system sizing, this ...



Solar DC to AC Conversion Calculator: How Does It ...

This is what's stored in their batteries. The type of power used by our appliances, however, is AC, or alternating current. You need to do some conversion maths ...



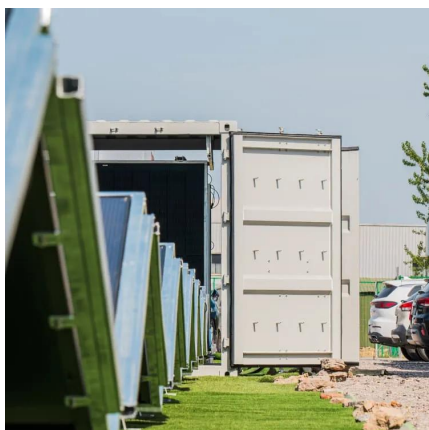
What Size Inverter Do I Need?

Learning how to calculate inverter size for your needs can be a tricky task, especially if you're unfamiliar with how an inverter works or how much power ...



Breaking Down kW in Solar System Sizes: 5kW, 8kW, ...

Curious about the differences between 5kW, 8kW, and 10kW solar systems? Learn about the kW in solar system sizes and how they can work for ...





10kW Solar Inverter

How Much Power Does a 10kW Solar Inverter Produce? The actual power output of a 10kW solar inverter depends on several factors, including the amount of sunlight your ...



[25kW Solar System Information - Facts & Figures](#)

It is usually good to have an inverter that is less than the array size. A 25kW solar array can be put with an inverter with an AC output of 18.75kW. What you "can" do is not what you "should" ...

25kW Off Grid Inverter Pure Sine Wave , Energetech ...

Volume discounts for 25kW off grid inverter pure sine wave. Order at Energetech Solar.



How much power does an Inverter use just sitting there idling?

Generally a 3 kW sinewave high freq inverter is 30 to 50 watts of full idle power. A high frequency inverter has two primary stages. First stage is high frequency DC to DC ...



Inverter Amp Draw Calculator

The current drawn by a 1500-watt inverter for a 48 V battery bank is 37.5 amps. as per the inverter amp draw calculator.



10 Questions You Should Know About 6kW Inverter Solar Systems

Here, we'll explore the essential details surrounding 6kW inverter solar systems, addressing common questions and concerns. ### What is a 6kW Inverter Solar System? A ...

Understanding Inverter Power Ratings: kW vs kVA Explained

kW refers to the real or usable power output of an inverter. kVA represents the total power capacity it can carry, including power lost in phase difference (reactive power). For example, ...





[7.5kW Solar System Information - Facts & Figures](#)

On This Page: How Much Energy Does a 7.5kW System Produce? How Much Space Will It Take Up? How Much Does a 7.5kW System Cost? How Much Energy Does It Produce? Other solar ...

Inverter Efficiency: Understanding How Much Power You're ...

Have you ever wondered how much power you're actually getting from your inverter? Many people think that once they connect their solar panels and batteries to an ...



What Size Solar Inverter Do I Need? Experts Break It ...

But before you start soaking up the sun, you'll need the right inverter to match your system. This guide breaks down what size solar ...

What Size Solar Inverter Do I Need? Experts Break It Down

But before you start soaking up the sun, you'll need the right inverter to match your system. This guide breaks down what size solar inverter you actually need--so your setup ...



1 Ton, 2 Ton, 3 Ton, 4 Ton, 5 Ton, 6 Ton AC Wattage

Knowing AC wattage will help you determine power requirements and estimate cooling costs. A lot of homeowners are interested in how many watts does a 3-ton or 5-ton air conditioner use, ...

[How much power does a solar inverter have?](#)

A solar inverter typically has power ratings that range significantly, usually between 1 kW to over 10 kW. This variability depends on the inverter ...



The Ultimate Guide to 25kW Off-Grid Solar Inverters: Everything ...

For a 25kW system, a hybrid inverter may be the best option as it can work with both the solar panels and the battery bank, providing greater flexibility and control over the system. Another ...



Frequently Asked Questions about Inverters

How much power does an inverter consume? Mastervolt sine wave inverters have an output efficiency of more than 92 %, which is the maximum that can be achieved with modern ...



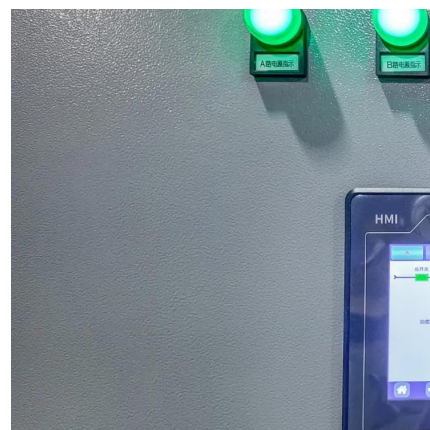
25kW Off Grid Inverter Pure Sine Wave , Energetech Solar

Volume discounts for 25kW off grid inverter pure sine wave. Order at Energetech Solar.



How Much Electricity Does A Mini Split Use? (Watts, ...

Do mini-splits use a lot of electricity? Well, that's relative. To answer this question adequately and fully, we have to calculate the mini-split power consumption. ...



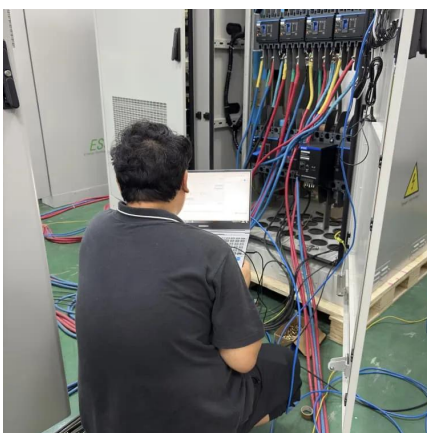
What Size Inverter Do I Need?

Learning how to calculate inverter size for your needs can be a tricky task, especially if you're unfamiliar with how an inverter works or how much power you need to produce.



How Much Does a 25kW Solar System Cost?

A 25kW solar system can generate 25 kilowatts of power under ideal conditions, typically comprising around 62-82 solar panels depending on ...



How Much Power Does a 12kw Solar System ...

If you're considering installing a solar energy system, you're probably wondering how much electricity it will generate. A 12 kW system is a ...

The Only Inverter Size Chart You'll Ever Need

During our research, we discovered that most inverters range in size from 300 watts up to over 3000 watts. In this article, we guide you through the different inverter sizes. ...





PVWatts Calculator

NREL's PVWatts ® Calculator Estimates the energy production of grid-connected photovoltaic (PV) energy systems throughout the world. It allows homeowners, small building owners, ...

Contact Us

For catalog requests, pricing, or partnerships, please visit:
<https://www.talbert.co.za>