

How much electricity does a 5G base station use per day





Overview

One 5G base station is estimated to consume about as much power as 73 households (6), and 3x as much as the previous generation of base stations (5), (7). When base stations, data centers and device.

How much power does a 5G base station consume?

That's almost a threefold increase compared to 4G (5). One 5G base station is estimated to consume about as much power as 73 households (6), and 3x as much as the previous generation of base stations (5), (7).

Are 5G base stations causing more energy consumption?

However, Li says 5G base stations are carrying five times the traffic as when equipped with only 4G, pushing up power consumption. The carrier is seeking subsidies from the Chinese government to help with the increased energy usage.

Why does 5G use more power than 4G?

The data here all comes from operators on the front lines, and we can draw the following valuable conclusions: The power consumption of a single 5G station is 2.5 to 3.5 times higher than that of a single 4G station. The main factor behind this increase in 5G power consumption is the high power usage of the active antenna unit (AAU).

How much power will a 5G base station use in 2025?

The Small Cell Forum predicts the installed base of small cells to reach 70.2 million in 2025 and the total installed base of 5G or multimode small cells in 2025 to be 13.1 million. "A 5G base station is generally expected to consume roughly three times as much power as a 4G base station.

How much power does a 5G network consume?

In China, for example, total power consumption by telecoms networks exceeds 50 billion kWh. Once 5G networks are deployed, the power consumption of telecoms networks in China will exceed an estimated 100 billion kWh,



generating annual carbon emissions of 27.2 billion kg.”.

How much energy does a 5G small cell BS consume?

Simulation results reveal that more than 50% of the energy is consumed by the computation power at 5G small cell BS's. Moreover, the computation power of 5G small cell BS can approach 800 watt when the massive MIMO (e.g., 128 antennas) is deployed to transmit high volume traffic.



How much electricity does a 5G base station use per day



Energy Consumption of 5G, Wireless Systems and the Digital ...

"A 5G base station is generally expected to consume roughly three times as much power as a 4G base station. And more 5G base stations are needed to cover the same area," -IEEE ...

How Much Power Does a 5G Base Station Consume? - Smart Solar

On average, a 5G base station consumes between 1,000 to 3,000 watts. This is significantly higher than 4G base stations, which typically consume 500 to 1,500 watts.



5G base stations use a lot more energy than 4G base stations: MTN

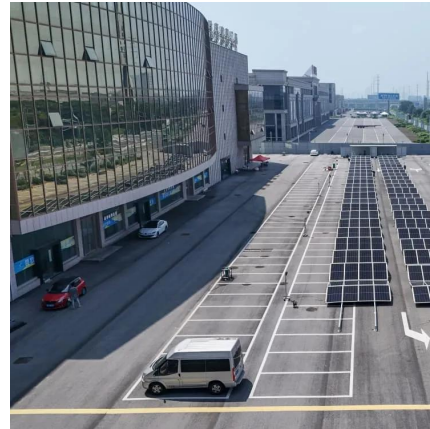
A typical 5G base station consumes up to twice or more the power of a 4G base station, writes MTN Consulting Chief Analyst Matt Walker in a new report entitled " Operators ...

Power Base Station

Base station power refers to the output power level of base stations, which is defined by specific maximum limits (24 dBm for Local Area



base stations and 20 dBm for Home base stations) ...



5G base stations use a lot more energy than 4G base ...

A typical 5G base station consumes up to twice or more the power of a 4G base station, writes MTN Consulting Chief Analyst Matt Walker in a ...

[Do Cell Phone Towers Cause Cancer? American ...](#)

Base station antennas use higher power levels than other types of land-mobile antennas, but much lower levels than those from radio and television ...



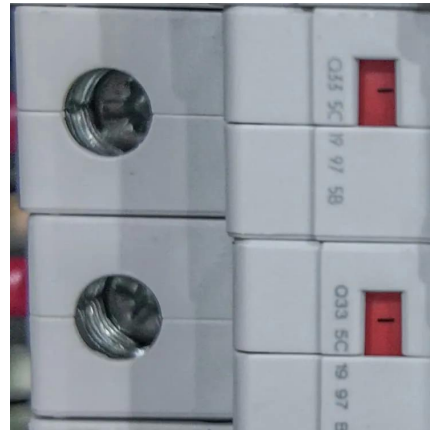
5G base station saves energy and reduces consumption

In 5G communications, base stations are large power consumers, and about 80% of energy consumption comes from widely dispersed base stations. It is predicted that by ...



How Much Power Does 5G Base Station Consume? , Huijue ...

Decoding the Power Drain The average 5G base station consumes 2.5-4 kW daily - equivalent to powering 40 refrigerators simultaneously. Three factors amplify this:



What is the Power Consumption of a 5G Base Station?

Ericsson has been able to innovate a 5G base station that consumes only 20% energy when the traffic is low compared to a normal setup. This achieves through advanced ...

[\(PDF\) 5G network deployment and the associated ...](#)

By 2026, 5G base stations will account for 2.1% of total electricity consumption [3], and the high electricity cost will become the burden of the ...



[Front Line Data Study about 5G Power Consumption](#)

The power consumption of a single 5G station is 2.5 to 3.5 times higher than that of a single 4G station. The main factor behind this increase in 5G power consumption is the high power ...



base station in 5g

The base station in a 5G network is designed to provide high data rates, low latency, massive device connectivity, and improved energy ...



antenna

I want to know how much power is radiated by cell towers of GSM (1.8 GHz), 3G (2.1 GHz), 4G (2.6 GHz.) I want links to references if possible.



How much energy will 5G consume?

The challenge with 5G energy consumption is a function of the design: larger antennas, larger bandwidths, and higher base station density (Han & Bian, 2020). However, ...



Measurements and Modelling of Base Station Power Consumption under Real

Abstract Base stations represent the main contributor to the energy consumption of a mobile cellular network. Since traffic load in mobile networks significantly varies during a working or ...

5G Base Station

The main energy consumption of 5G base stations is concentrated in the four parts of base station, transmission, power supply and computer room air conditioner, and the ...



5G towers: everything you need to know about 5G cell ...

Are 5G towers safe? Has Covid-19 stopped the roll-out of 5G? How do 5G cell towers operate? Here we demystify 5G's most controversial ...

Energy Consumption of 5G, Wireless Systems and ...

"A 5G base station is generally expected to consume roughly three times as much power as a 4G base station. And more 5G base stations are needed to cover ...



How much power does 5G consume?

One 5G base station is estimated to consume about as much power as 73 households (6), and 3x as much as the previous generation of base stations (5), (7). When base stations, data centers ...

Does 5G require electricity?

One 5G base station is estimated to consume about as much power as 73 households (6), and 3x as much as the previous generation of base stations (5),(7). Takedown request , View ...



What is 5G Energy Consumption?

5G Base Station Power Consumption: With each base station carrying at least 5X more traffic and operating over more frequency bands, 5G base station power consumption is at least twice ...



The power supply design considerations for 5G base stations

An integrated architecture reduces power consumption, which MTN Consulting estimates currently is about 5% to 6 % of opex. This percentage will increase significantly with ...



How Many kWh per Day Is Normal? Understanding ...

Average Daily kWh Consumption Now that you know what a kWh is, how much energy does the average household use per day? According to ...

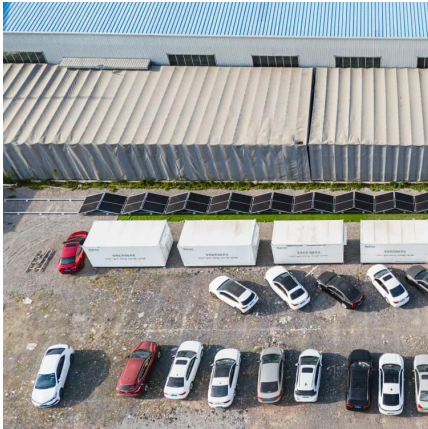
A technical look at 5G energy consumption and performance

To understand this, we need to look closer at the base station power consumption characteristics (Figure 3). The model shows that there is significant energy consumption in the ...



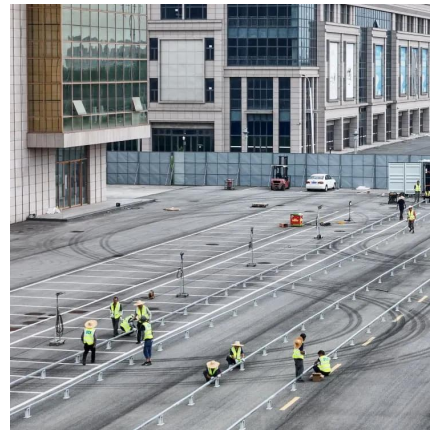
Power to the 5G people

Figures from MTN Consulting estimate that telcos already spend around six percent of their operating expenditure (excluding depreciation and ...



How much power does a 5G base station consume? It is rumored ...

As the two leading companies in the construction of 5G base stations in China, Huawei and ZTE have previously announced the power consumption data of 5G equipment, ...



Contact Us

For catalog requests, pricing, or partnerships, please visit:
<https://www.talbert.co.za>