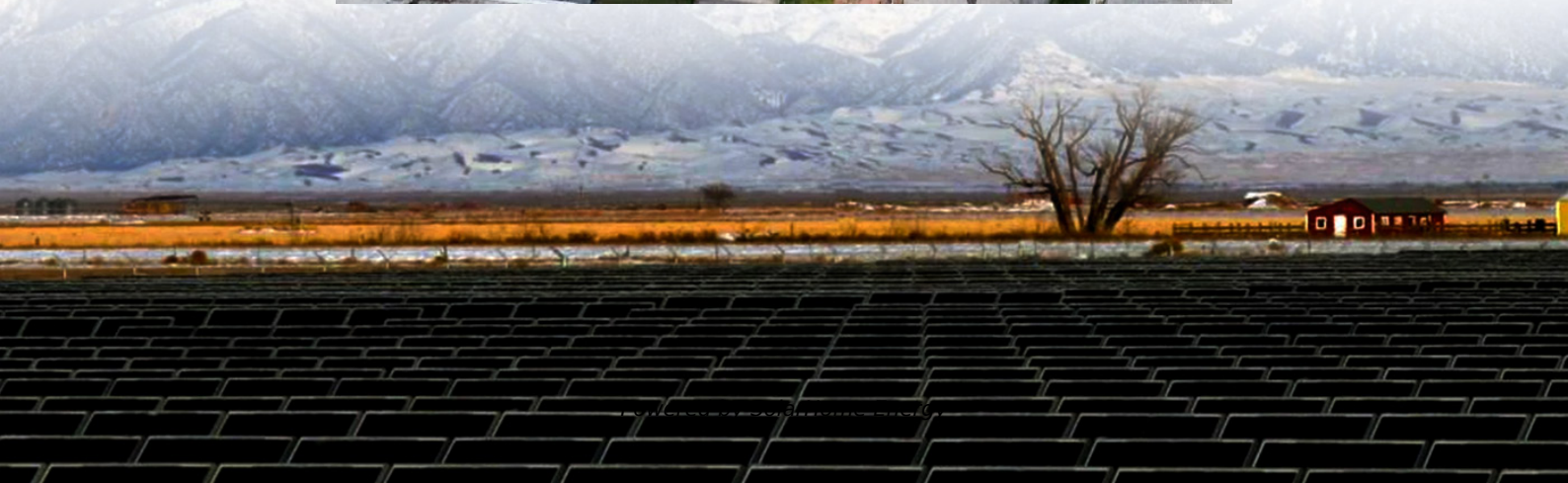


# **How much does the outdoor power supply need to be discharged to recharge**





## Overview

---

### How to charge a portable power station?

To charge a portable power station, you can mainly use four types of outlets - home outlets, car outlets, solar panels and a generator. Let's take a look at each one in turn. The easiest and most common way to charge your portable power station is with a wall outlet.

### Can You charge a portable power station with a wall outlet?

Most portable power stations have an input port for use with a wall outlet, including the Anker SOLIX F2000 Portable Power Station, which can charge up its 2048Wh Capacity in only 2 hours - making it an ideal choice for those who enjoy charging stations for camping. Here is how to charge your portable power station with outlets:.

### How long does it take to charge a portable power station?

On a clear, sunny day, a solar panel may take several hours to charge the power station fully. However, this method is ideal for long-term outdoor use or in emergencies when traditional power sources are unavailable. The speed at which a portable power station charges is influenced by several factors.

### How often should a power station battery be recharged?

It is recommended to operate and recharge it if necessary every three months to keep the power station active. Like a car battery, you should warm up the battery every so often to keep it active before it becomes dormant. You can recharge it at any time, however, we recommend that you do not let the battery level drop down below 20%.

### How many Watts Does a portable power station charge?

Depending on the capacity, portable power stations can range from a few hundred watt-hours (Wh) to several thousand Wh, enabling them to charge laptops, smartphones, power tools, and even small refrigerators. Charging a



portable power station is the process of replenishing the energy in its internal battery.

Should you charge a power station while driving?

**Charge While Driving:** To avoid draining the car battery, it's best to charge the power station while the vehicle is running. This ensures a continuous power supply without risking your vehicle's battery.



## How much does the outdoor power supply need to be discharged to

---



### How to Calculate Power Needs for Camping Equipment

Explore our comprehensive guide on how to calculate power needs for camping equipment. From fridges to lanterns, learn the essential tips for ensuring you have the right portable power ...

### [How to Charge a Portable Power Station?](#)

In this comprehensive guide, we will walk you through all you need to know about how to charge a portable power station.



### [How Do You Charge A Portable Power Station?](#)

There are several ways to charge a portable power station, each offering its own benefits and limitations. The most common methods are wall outlet charging, car charging, ...



### Does Firestick Need to be Plugged in for Power? Find ...

Wondering does Firestick need to be plugged in for power? Learn whether your Fire TV Stick





requires a constant power source, how it work.



## How Long Does It Take to Charge a Solar Battery? A ...

Understanding Solar Battery Basics The time it takes to charge a solar battery depends on a few factors such as the size of the battery, the ...



## Should I fully discharge upon receipt

I wouldn't do a heavy discharge. LIFEPO4 will last much longer, if one never goes below 10 percent and if practical charge up to 90 percent at most. If you find that your display ...



## 6 Portable Power Station Dos and Don'ts to Maximize Efficiency

Overcharging occurs when the power station remains connected to a charger beyond its full capacity, which can degrade battery cells and shorten their lifespan. On the ...





## How long does it take to recharge a car battery after starting?

Assuming a typical lead-acid, 12 V car battery (typically at 13 V or so fully charged), and that it takes roughly 500 A over 3 seconds to start an engine, how long will it take to ...



## Tips and Tricks on How to Charge a Ryobi Battery Efficiently

Hello, and thank you for joining us on this journey to master the art of charging your Ryobi battery! If you're a fan of Ryobi's range of power tools, you know that the heart of their ...

## Is it safe to charge power station to 100 when it is discharged to ...

I have a few power stations (e.g. Yose Power and Flashfish) to use for blackouts. As blackouts are often and not long, power stations are usually discharged from 100 to 80-95%. Then I ...



## Is it possible to revive a dead battery by passing a ...

A lab power supply works just fine, and if you have an adjustable lab power supply, the best choice is to set its voltage to the regular charging ...



## At What Amperage Should I Charge My Deep Cycle ...

For example, if you have a small 35 amp-hour deep cycle battery, and it is only about 40 to 50 percent discharged, it may be better to recharge it ...



## How to Charge an AGM Battery and Why It's Different

Make sure you use the AGM or Absorbed setting. If you're not sure, don't risk it. How long does it take an AGM battery to recharge? About two ...

## How Long to Drive to Charge a Car Battery , Batteries ...

Once it drops down to 11.6 volts, the battery is almost completely discharged, the dreaded dead battery. For more information on how car ...





## How to store and how often to charge my power station if I don't ...

It is recommended to operate and recharge it if necessary every three months to keep the power station active. Like a car battery, you should warm up the battery every so often to keep it ...

## How much electricity can an outdoor power supply store

The lifespan of an outdoor power supply is influenced by several factors, including the type of battery, frequency of use, and how well it is maintained. An average lithium-ion ...



## 6 Portable Power Station Dos and Don'ts to Maximize ...

Overcharging occurs when the power station remains connected to a charger beyond its full capacity, which can degrade battery cells and shorten ...

## [Does a New AC Capacitor Need to Charge?](#)

Explore the Charging Process of a New AC Capacitor. Find Out if a New AC Capacitor Needs to Charge and the Factors That Affect Its Readiness.





### [Quick Guide to PHEV Chargers & Fast Charging](#)

Charging a PHEV requires a standard outlet or Level 2 PHEV charger, but the vehicle can still use gasoline when that battery is discharged.



### **Battery Discharge Time Calculator**

In today's fast-paced world, our electronic devices are key to our daily lives. The battery's discharge time is a big factor in how long they last. It's the time a fully charged battery ...



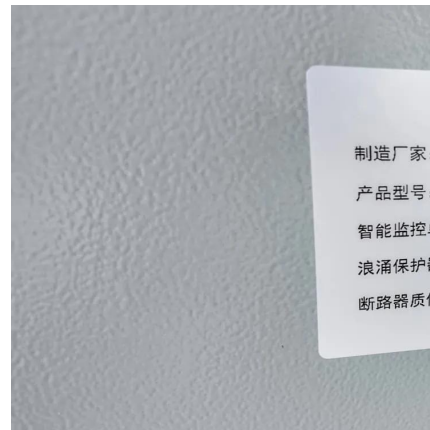
### **Is it safe to charge power station to 100 when it is discharged to ...**

I have a few power stations (e.g. Yose Power and Flashfish) to use for blackouts. As blackouts are often and not long, power stations are usually discharged from 100 to 80-95%.



## 4 Best Ways on How to Charge/Recharge a Portable ...

To charge a portable power station, you can mainly use four types of outlets - home outlets, car outlets, solar panels and a generator. Let's take ...



## Fully Discharge Lithium Battery: Damage & Prevention

Do power banks need different discharge protocols? Yes - multi-cell packs require balanced discharge. Imbalanced cells can reverse-charge ...

## [How to Calculate Power Needs for Camping ...](#)

Explore our comprehensive guide on how to calculate power needs for camping equipment. From fridges to lanterns, learn the essential tips for ensuring you ...



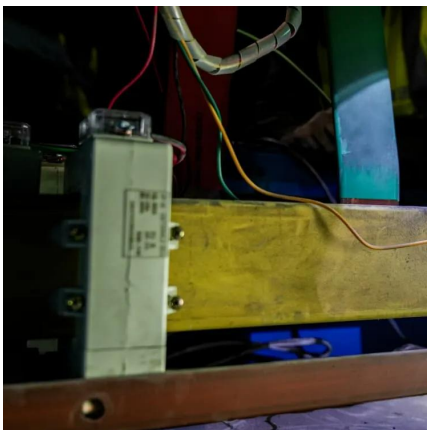
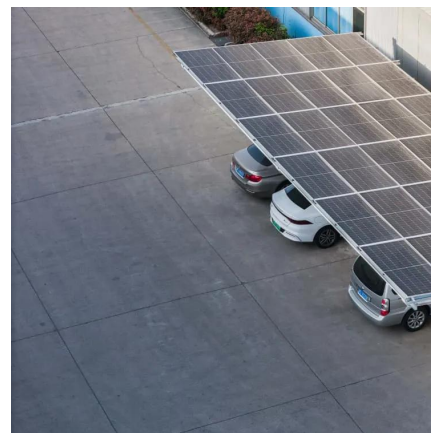
## What Size of a Portable Power Station Do I Need for Camping?

Discover how to choose the perfect portable power station size for your camping needs. From basic overnight trips to weeklong off-grid adventures, find the ideal capacity and ...



## 4 Best Ways on How to Charge/Recharge a Portable Power Station

To charge a portable power station, you can mainly use four types of outlets - home outlets, car outlets, solar panels and a generator. Let's take a look at each one in turn. The ...



## Ultimate LiPo Battery Guide: How to Safely Charge, ...

LiPo batteries need to be discharged and stored with cell voltages near nominal, at 3.8v. If you haven't used your battery in a few days, and are ...

## At What Amperage Should I Charge My Deep Cycle Battery?

For example, if you have a small 35 amp-hour deep cycle battery, and it is only about 40 to 50 percent discharged, it may be better to recharge it at a lower rate-between 2 ...





## Contact Us

---

For catalog requests, pricing, or partnerships, please visit:  
<https://www.talbert.co.za>