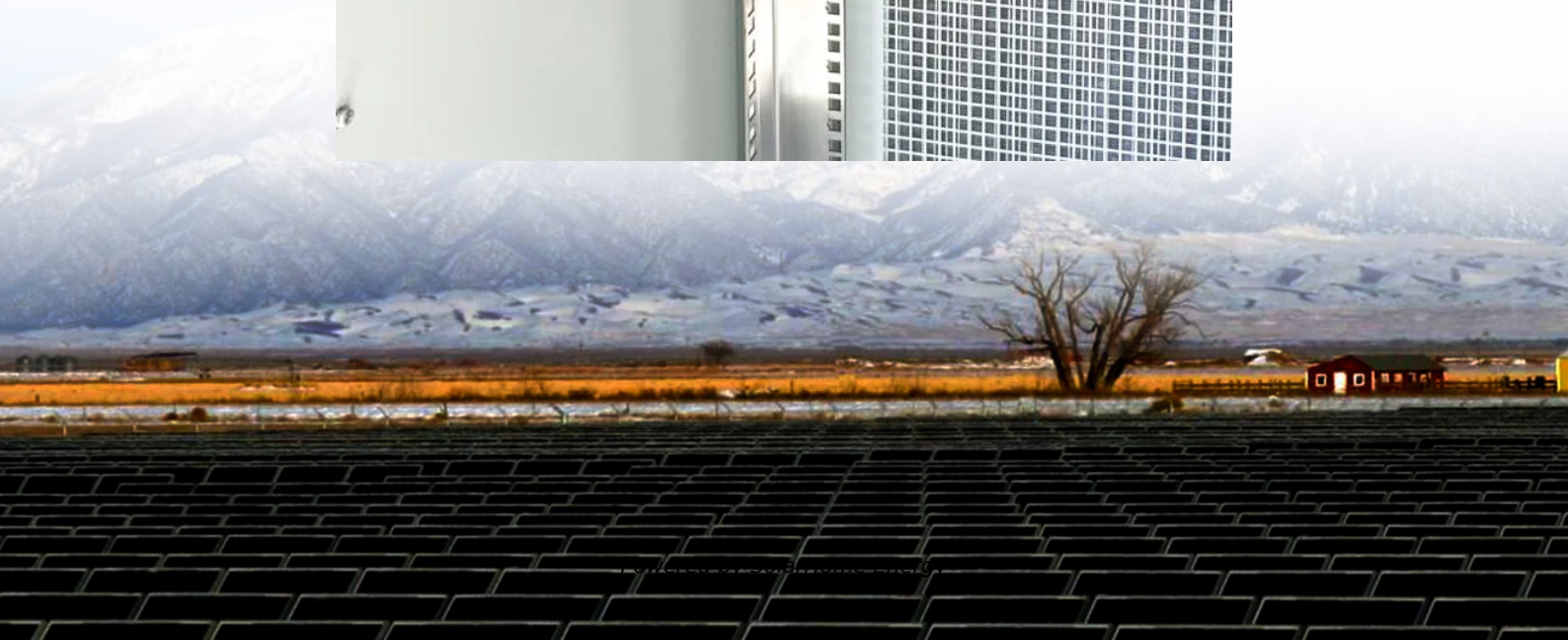


# **How much does the lithium iron phosphate battery station cabinet weigh**





## Overview

---

Which power station brands use LiFePO4 batteries?

The most popular power station brand that uses LiFePO4 batteries is Bluetti.

What is a lithium-ion power station?

A lithium-ion power station typically uses one of two battery types: LCO or NMC. Lithium-ion power stations are often NMC, as seen in Goal Zero and Jackery products. LCO batteries are more common but many manufacturers are transitioning to NMC.

What temperature should a lithium ion power station be charged at?

The max charging temperature for most Lithium-ion power stations is 104-113F. Above that, and your system will likely stop charging to protect the batteries. This is especially important when charging the power station, as that's when there's a greater risk of thermal runaway.

How many cycles do lithium-ion power stations provide?

Lithium-ion power stations, both LCO and NMC, generally last at least 500 cycles before their storage capacity degrades to 80% of listed capacity. For both Li-ion and LiFePO4 power stations, lifespan depends on the depth of discharge.

What is a LiFePO4 power station?

A LiFePO4 power station is a portable energy storage system that uses LiFePO4 batteries. These stations provide a reliable power source for a variety of applications, ranging from outdoor recreational activities to backup power for homes. Unlike gasoline generators, they are quiet, emit no pollutants, and can be used indoors.

How are LiFePO4 batteries safer than Li-ion?



LiFePO<sub>4</sub> batteries are safer than Li-ion because they are more stable and less likely to experience thermal runaway. Thermal runaway occurs when the battery heats quickly, causing the battery to ignite or explode. Because Li-ion batteries contain hydrogen gas, any leak can cause a catastrophic fire. NMC batteries are marginally safer, but still not as stable as a LiFePO<sub>4</sub> battery.



## How much does the lithium iron phosphate battery station cabinet v

---



[EcoFlow Blog , Guides, Reviews, and News](#)

You agree to receive newsletters and marketing emails from EcoFlow.

### **LiFePO4 Power Station: All You Need to Know - VTOMAN**

This article aims to throw light over the details of LiFePO4 batteries, comparing them with traditional lithium-ion counterparts and explore the benefits and best LiFePO4 power ...



### **Deep Cycle Lifepo4 Battery Powerwall 10KWH 48v 200AH ...**

It is based on 16S2P 3.2v 100Ah Lithium iron phosphate battery cells. Battery system design for wall mounted installation. They system is ESS module & racks are a great dynamic possibility ...

### [Compare Energy Cost of Battery Chemistries](#)

The answer is simple; it delivers much more cycles and costs substantially less over its life





span. Our engineers have studies and tested ...



## How Does LiFePO4 Battery Weight Compare to Other Battery ...

LiFePO4 (lithium iron phosphate) batteries weigh less than lead-acid counterparts but more than other lithium-ion types due to their robust cathode structure. Key factors include ...



## What is a LiFePO4 Power Station and How Does It ...

LiFePO4 power stations store energy safely and are eco-friendly. They work well for home use or outdoor trips. These stations use strong lithium iron ...



## Deep Cycle Lifepo4 Battery Powerwall 10KWH 48v 200AH ...

This article aims to throw light over the details of LiFePO4 batteries, comparing them with traditional lithium-ion counterparts and explore ...





## The LiFePO<sub>4</sub> (LFP) Battery: An Essential Guide

What LiFePO<sub>4</sub> Batteries Offer That Other Batteries Don't We keep calling this battery LiFePO<sub>4</sub>, but what does that mean? LiFePO<sub>4</sub> is short for Lithium Iron Phosphate. A ...



### **Lithium-Ion Battery Weight: How Heavy It Is, Energy Density, And**

A lithium-ion battery's weight depends on its size and capacity. A typical small battery weighs 40-50 grams, while larger batteries, like those used in electric vehicles, can ...



### **How much does a string of lithium iron phosphate batteries ...**

How much does a lithium ion battery weigh? higher power density for more battery life in a lighter package. The weight of a Lithium-ion battery depends on the size, chemistry, and the amount of ...



### **Lithium Iron Phosphate**

Lithium Iron Phosphate abbreviated as LFP is a lithium ion cathode material with graphite used as the anode. This cell chemistry is typically lower energy ...



## 1MW Battery Energy Storage System

The MEGATRON 1MW Battery Energy Storage System (AC Coupled) is an essential component and a critical supporting technology for smart grid and renewable energy (wind and solar).



## What is a LiFePO4 Power Station and How Does It Work?

LiFePO4 power stations store energy safely and are eco-friendly. They work well for home use or outdoor trips. These stations use strong lithium iron phosphate batteries. These batteries last ...

## [EVERVOLT® Home Battery , Panasonic North ...](#)

The EVERVOLT® home battery system integrates a powerful lithium iron phosphate battery and hybrid inverter with your solar panels, generator and ...





## Everything You Need to Know About LiFePO4 Battery Cells: A

Discover the benefits, applications, and best practices of LiFePO4 battery cells. Learn how they power everything from EVs to renewable energy systems.

## Lithium Battery Weight and Energy Density Comparison

Why does lithium battery weight matter? The weight of a lithium battery influences both performance and efficiency, especially in motion-based systems. Here's why: Electric ...



## Can LiFePO4 Batteries Catch Fire? Unveiling the

Among the diverse battery landscape, Lithium Iron Phosphate (LiFePO4) batteries have earned a reputation for safety and stability. But even with their stellar track record, the ...

## Iron Phosphate: A Key Material of the Lithium-Ion Battery Future

Beyond the current LFP chemistry, adding manganese to the lithium iron phosphate cathode has improved battery energy density to nearly that of nickel-based ...





## How Much Does A Car Battery Weight

Therefore, this guide will help you understand the types of car battery weights and their impact on car performance. How Much Does a Car Battery Weigh? Common types of ...



## Lithium Iron Phosphate batteries - Pros and Cons

For every 15°F above 75°F the cycle life of a lead acid battery is reduced by half. At only 30lbs each, a typical LFP battery bank (5) will weigh 150lbs. A typical lead acid battery ...



## Do Lithium Batteries Need Ventilation?

Yes, lithium batteries generally require ventilation, especially during charging. Proper airflow helps dissipate heat and prevents the buildup of gases that can occur during ...





## The Cost of Lithium Iron Phosphate Energy Storage: What You ...

But how much does this workhorse actually cost today? Buckle up--we're diving into the dollars, trends, and sneaky factors that'll make or break your storage budget.



## [Lithium Iron Phosphate batteries - Pros and Cons](#)

For every 15°F above 75°F the cycle life of a lead acid battery is reduced by half. At only 30lbs each, a typical LFP battery bank (5) will weigh ...

## Lithium-ion vs LiFePO4 Power Stations: Pros, Cons & Which One ...

In it, we compare traditional lithium-ion batteries vs. the newer LiFePO4 power stations on the factors and features that matter most to any solar power system owner. Here's a quick look at ...



## How Much Do Li-Ion Batteries Weigh? Factors & Data

In contrast, batteries for portable electronics prioritize compactness and lightness. By considering these factors, manufacturers and consumers can better understand and ...



## Lithium Battery Weight and Energy Density Comparison

Why does lithium battery weight matter? The weight of a lithium battery influences both performance and efficiency, especially in motion-based ...

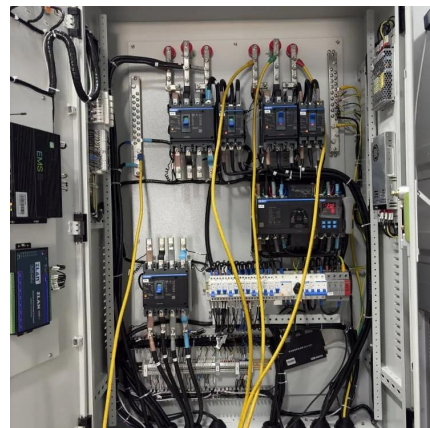


## [How Much Does a Lithium-Ion Battery Cost in 2024?](#)

Lithium-ion batteries are dominating the consumer market, be it for powering electric vehicles, energy storage solutions, power tools, or basic electronics. The lithium technology continues ...

## [FranklinWH Whole Home battery and Home Power ...](#)

The battery unit holds 15 kWh of lithium iron phosphate (LFP) battery cells. The unit can output 10 kW of continuous power and surge to 15 kW for 10 seconds. ...





## Contact Us

---

For catalog requests, pricing, or partnerships, please visit:  
<https://www.talbert.co.za>