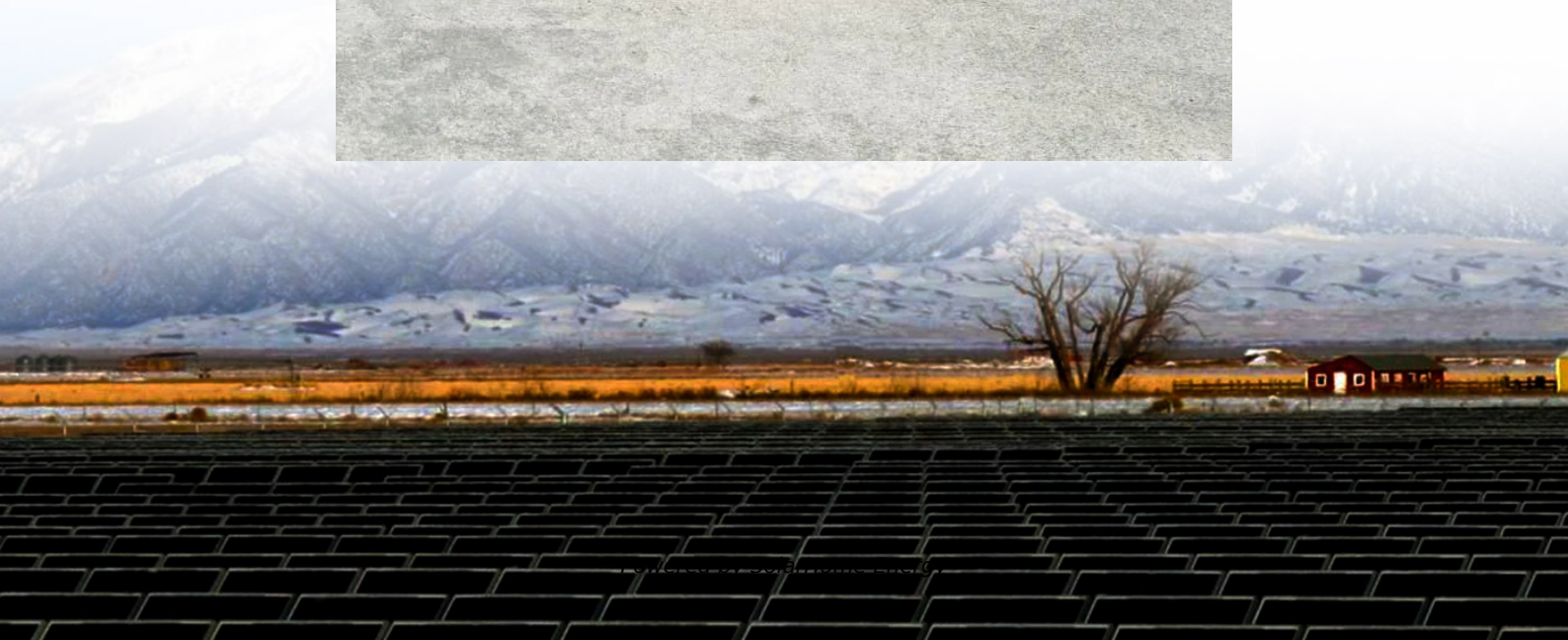


How much current should a combiner box be used for photovoltaic power generation





Overview

When should I use a combiner box in my solar power system?

You should use a combiner box in your solar power system when you have more than three strings of solar panels. It is essential for enhancing the protection of your inverter and providing a rapid shutdown mechanism in case of sudden voltage fluctuations. A combiner box simplifies the wiring to the inverter.

What is a photovoltaic combiner box?

Photovoltaic combiner boxes play a crucial role in solar panel systems, especially in larger installations. They serve as a centralized point where wirings from multiple panels are combined. This allows for a more organized and safer electrical setup.

What is a solar combination box?

A Solar Combiner Box is an essential electrical device used in photovoltaic (PV) power generation systems. Its primary function is to combine the output currents of multiple solar panel strings (PV strings) into a single output, which is then sent to the inverter for DC to AC conversion.

How does a solar combiner box work?

If every string were wired directly to the inverter, it would result in complex cabling, higher costs, and increased risk of electrical faults. The solar combiner box solves this problem by consolidating the current from all strings into one streamlined output.

What is a solar combiner box & junction box?

A solar combiner box and a junction box serve distinct purposes in a photovoltaic system. The combiner box consolidates electrical outputs from multiple solar panel strings into a single output. It includes protective components like fuses, circuit breakers, and surge protection devices.



Can you put a photovoltaic combiner box in direct sunlight?

Placing a photovoltaic combiner box in direct sunlight can cause the internal wiring to overheat. You'll also want to mount the box in a location that is relatively well-protected from the natural elements. To extend their lifespan, place PV combiner boxes in locations less exposed to the elements.



How much current should a combiner box be used for photovoltaic p



How much do you know about photovoltaic combiner boxes?

Classification and composition of photovoltaic combiner boxes: The photovoltaic combiner box is one of the important components of the photovoltaic power generation system, as well as an ...

How to Choose the Right PV Combiner Box for Your Solar Project

Learn how to choose the right PV combiner box, including string count, current, voltage, and protection devices. Step-by-step guide with examples.



The Ultimate Guide to Solar Combiner Boxes: From ...

Maximum Current: Select a combiner box with a current rating that can handle the maximum current produced by your solar panel strings. ...

What You Should Know about PV Combiner Box

You should use a combiner box in your solar power system when you have more than three

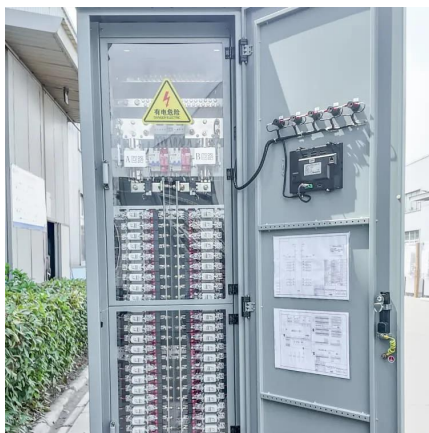


strings of solar panels. It is essential for enhancing ...



Photovoltaic AC combiner box detailed explanation

For a huge photovoltaic power station, the amount of the combiner box only accounts for 1%, but 100% of the current passes through it. During commissioning, operation and maintenance, ...



PV Combiner Box for Efficient Solar Energy Systems

A PV combiner box is essential for optimizing solar power systems by consolidating multiple panel strings into a single output, enhancing efficiency, ...



How To Size Solar Combiner Box?

Learn how to size a solar combiner box by considering the number of strings, current, and voltage ratings. Proper sizing ensures optimal performance, ...





What is a Combiner Box as Used in PV System

The combiner box should match the voltage and current ratings of these components. For example, if your panels operate at 1000V DC, the box must support this ...



Trying to understand Combiner Box sizing / restrictions

Using the combiner box, you can connect 4 panels into one string. If you put two panels on one string, you either get 25 amps (parallel), or 48v (series). 25 amps exceeds the ...

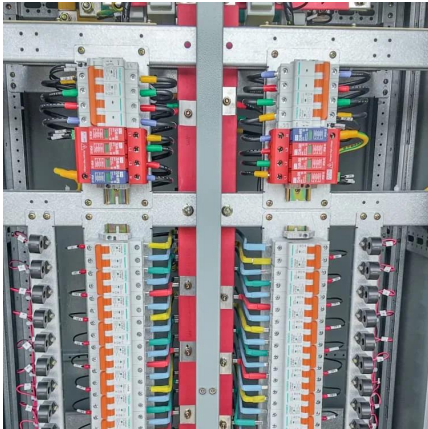
What Are The Key Components Of A PV Combiner ...

In the realm of solar energy systems, photovoltaic (PV) combiner boxes play a crucial role in streamlining the operation and safety of solar ...



The Ultimate Guide to Solar Combiner Boxes: From Basics to ...

Maximum Current: Select a combiner box with a current rating that can handle the maximum current produced by your solar panel strings. Common ratings are typically below ...



How to connect photovoltaic power generation to the ...

Cable entry device or conduit entry port: These openings allow cables from the strings of solar panels and output cables to enter the combiner box while maintaining waterproof sealing. Peel ...



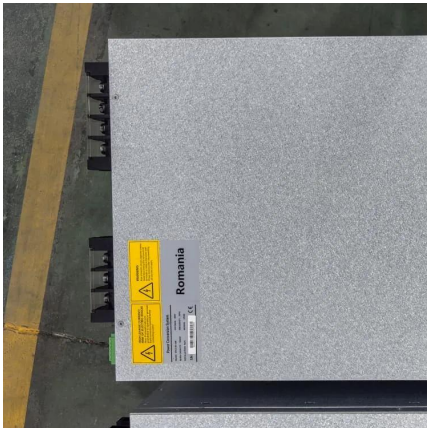
[Photovoltaic AC combiner box detailed explanation](#)

For a huge photovoltaic power station, the amount of the combiner box only accounts for 1%, but 100% of the current passes through it. During ...

[What You Need to Know About PV Combiner Boxes](#)

In electrical and solar power systems, PV combiner boxes and junction boxes are common terms. Each component plays a crucial role in ensuring the efficiency and safety of ...





[AC combiner box for photovoltaic power generation](#)

The photovoltaic AC combiner box is used in a photovoltaic power generation system with string inverters and is installed between the AC output side of the inverter and the grid connection ...

[How Does a PV Combiner Box Work? , Power Home](#)

The working principle of the PV combiner box can be imaginatively understood as the "current collection station", and its main task is to unify the ...



Micro inverter combiner box: functions, purchase ...

The micro inverter in micro inverter combiner box itself works by converting the direct current generated by the photovoltaic panel into ...

How To Size Solar Combiner Box?

Learn how to size a solar combiner box by considering the number of strings, current, and voltage ratings. Proper sizing ensures optimal performance, safety, and reliability for your PV system.



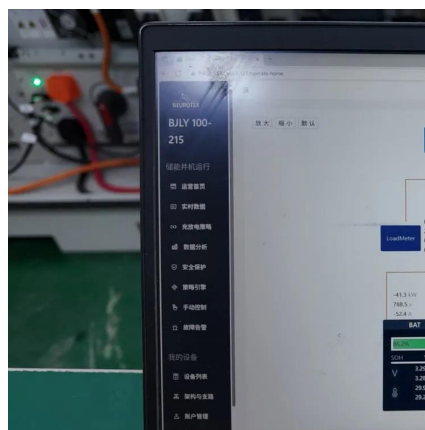
What You Should Know about PV Combiner Box

Components of a PV Combiner Box A typical PV combiner box has several essential components, such as: DC Molded Case Circuit Breakers ...



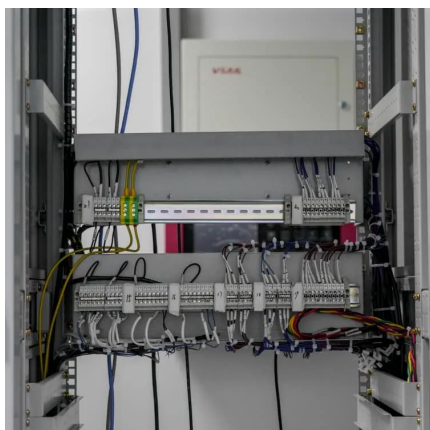
Electrical Parameters to Consider When Designing a Combiner Box

Since the current output from PV strings may not be uniform, it is important to consider how to effectively manage current distribution when designing the combiner box to prevent excessive ...



What is a Combiner Box as Used in PV System

The combiner box should match the voltage and current ratings of these components. For example, if your panels operate at 1000V DC, the box ...





PHOTOVOLTAIC AC COMBINER BOX DETAILED EXPLANATION

What is a photovoltaic AC combiner box? The photovoltaic AC combiner box is used in a photovoltaic power generation system with string inverters and is installed between the AC ...



A Comprehensive Guide to Combiner Boxes in Photovoltaic ...

Combiner boxes play an important role in photovoltaic (PV) installations. This comprehensive guide aims to shed light on the importance, functions, types and best practices of combiner ...

A Comprehensive Guide to Combiner Boxes in ...

Combiner boxes play an important role in photovoltaic (PV) installations. This comprehensive guide aims to shed light on the importance, functions, types ...



How much current should a combiner box be used for in ...

When selecting PV combiner boxes, several factors should be taken into consideration: Capacity: The combiner box should have the capacity to handle the maximum current and voltage of the ...



What You Should Know about PV Combiner Box

You should use a combiner box in your solar power system when you have more than three strings of solar panels. It is essential for enhancing the protection of your inverter ...

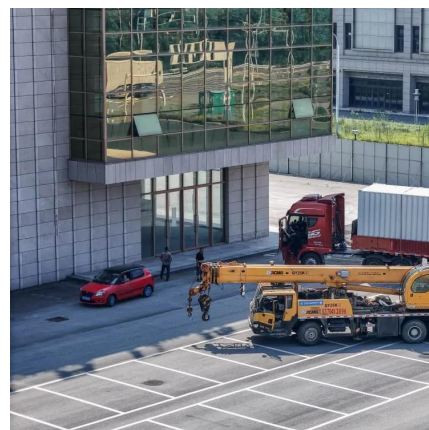


A COMPREHENSIVE GUIDE TO COMBINER BOXES IN PHOTOVOLTAIC

What is a photovoltaic AC combiner box? The photovoltaic AC combiner box is used in a photovoltaic power generation system with string inverters and is installed between the AC ...

PV Combiner Box, Solar Combiner Box, Power Home

Unique and innovative 3 string combiner box with maximum output switching current of 63A for 500V solar system, wall mounted to ensure a solid and ...





Contact Us

For catalog requests, pricing, or partnerships, please visit:
<https://www.talbert.co.za>