

How much angle should solar photovoltaic panels be installed at





Overview

This angle, usually between 30 and 45 degrees, ensures your solar panels catch the most sunlight throughout the year. So, tilt your panels to the same angle as your latitude for optimal performance and savings. What angle should solar panels be installed?

This is done by tilting your solar panels at the same angle as the latitude of your home. For most homeowners, the ideal angle for a solar panel installation is close to or equal to the latitude of your home. This angle is typically between 30 degrees and 45 degrees.

What is the optimal tilt angle of photovoltaic solar panels?

The optimal tilt angle of photovoltaic solar panels is that the surface of the solar panel faces the Sun perpendicularly. However, the angle of incidence of solar radiation varies during the day and during different times of the year.

What is solar panel angle?

Solar panel angle is simply the vertical tilt of your solar panels. It can be a little more tricky to understand since the proper tilt will vary with geographic location and time of year. In terms of geographic location, the angle of your panels will increase the further you move from the equator.

What is the ideal inclination of photovoltaic panels?

The ideal inclination of the photovoltaic panels depends on the latitude in which we are, the time of year in which you want to use it, and whether or not you have your own generator set. In winter, the optimum angle is close to 50°, and in summer, the ideal angle is around 15 degrees. However, some conditions can alter this premise.

Should solar panels be angled on a low angled roof?

Flush-mounting solar panels on a low-angled roof will produce less electricity and reduce solar savings. To receive exceptional solar savings, you'll want



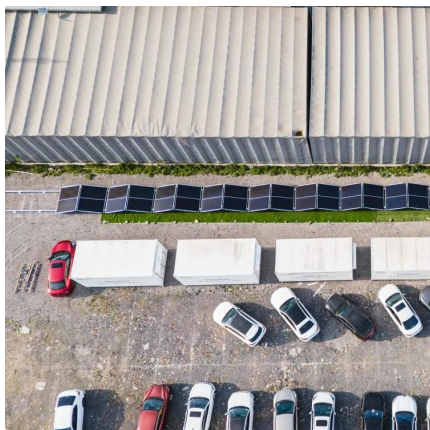
your solar panels to be angled in a way that optimizes the sunlight exposure for that location. This is done by tilting your solar panels at the same angle as the latitude of your home.

What is the best angle for solar panels in San Diego?

Since most parts of the US get a mix of sun and clouds, the most productive angle is actually flatter than the angle of latitude. So, at 33 degrees of latitude in San Diego, the ideal tilt for solar panels is 30 degrees. (For reference: The southern tip of Florida sits at about 25 degrees of latitude, while the top of Minnesota sits at 49 degrees.



How much angle should solar photovoltaic panels be installed at

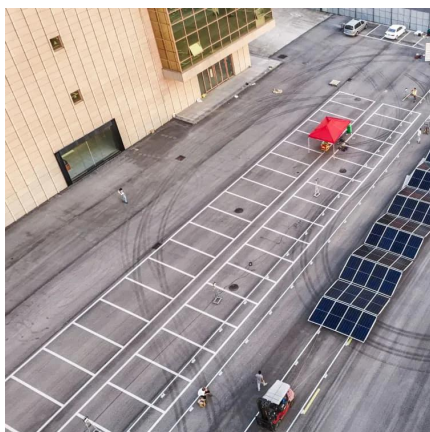


Solar Panel Tilt Angle Calculator

Simply enter your address and it will provide the optimal angles for each season, as well as a year-round average angle for your specific location. An example ...

What's the Best Angle for Solar Panels? , EnergySage

For maximum output, the sweet spot for solar panels in the continental U.S. is facing roughly south and tilted between 15 and 40 degrees, according to the Department of ...



Solar Panel Angle: Definition, and How to Calculate

The solar panel angle is the tilt at which a solar panel is installed, calculated relative to the horizontal plane of the equator. The solar panel ...

What's the Best Angle for Solar Panels? , EnergySage

For maximum output, the sweet spot for solar panels in the continental U.S. is facing roughly



south and tilted between 15 and 40 degrees, ...



Optimal Solar Panel Angle: Maximizing Efficiency and ...

This angle, usually between 30 and 45 degrees, ensures your solar panels catch the most sunlight throughout the year. So, tilt your panels to the ...

Solar Panel Tilt Angle Calculator

Simply enter your address and it will provide the optimal angles for each season, as well as a year-round average angle for your specific location. An example of the calculator results.



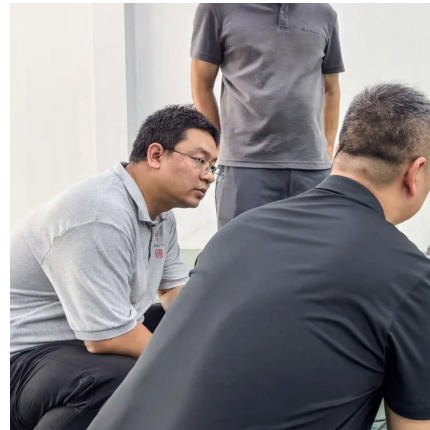
Solar Panel Angle: Definition, and How to Calculate

The solar panel angle is the tilt at which a solar panel is installed, calculated relative to the horizontal plane of the equator. The solar panel angle needs to be perpendicular ...



[North-facing vs south-facing panels \[UK, 2025\]](#)

We explore the difference in output between north-facing and south-facing solar panels, and discuss whether it's worth having a north-facing ...



[What Is The Best Angle For Mounting Solar Panels?](#)

The best angle depends on where you live. In general, solar panels work best when they face the sun directly. NYSSF solar experts can look at your roof and figure out the ...



To Tilt or No tilt: The best angle for your Solar Panels ...

When preparing for a solar panel installation, many people wonder whether they should tilt the panels or keep them flat. "What's the best angle ...



Solar Panels on a Flat Roof: 5 Things to Know

Can you install solar panels on a flat roof? Yes, you can successfully install solar panels on the flat roof of your home or business. ...



Solar panel inclination angle, location and orientation

In winter, the optimum angle is close to 50°, and in summer, the ideal angle is around 15 degrees. However, some conditions can alter this ...

Optimal Solar Panel Angle: Maximizing Efficiency and Energy ...

This angle, usually between 30 and 45 degrees, ensures your solar panels catch the most sunlight throughout the year. So, tilt your panels to the same angle as your latitude ...





How to Determine the Best Solar Panel Angle by ...

For instance, a PV system installed at a 0° tilt can generate an impressive annual output of 3,403 kWh at 90% projection rates, while a ...

[The Best Angle For Solar Panels: How To Boost ...](#)

Before getting your rooftop solar panels installed, you may ask "Why does the solar panel angle matter?" Ensuring your solar panels are set at the correct ...



What Is the Ideal Positioning for Solar Panels? Rooftop Tilt, Solar

Finding the Optimal Solar Panel Tilt with the Global Solar Atlas You can use the Global Solar Atlas to check the solar resources available in any part of the world, and this ...

What is the best angle for solar panels - Expert Tips

Panels tilted closer to vertical can grab more low winter sun, while a flatter angle works better in summer. If adjusting isn't your thing, just stick with the latitude rule and you'll ...



What is the Best Angle for Solar Panels? Maximizing the Efficiency

For most locations, solar panels installed at a fixed tilt equal to the site latitude +/- 15 degrees will capture reasonable sunlight year-round. However, calculating precise annual and seasonal tilt ...



Solar Panel Angle: Unlock Maximum Efficiency

Solar Panel Angle: Unlock Maximum Efficiency Introduction Solar panels are a popular and sustainable way to generate electricity from the sun's energy. However, to maximize their ...



What Angle Should My Solar Panels Be?

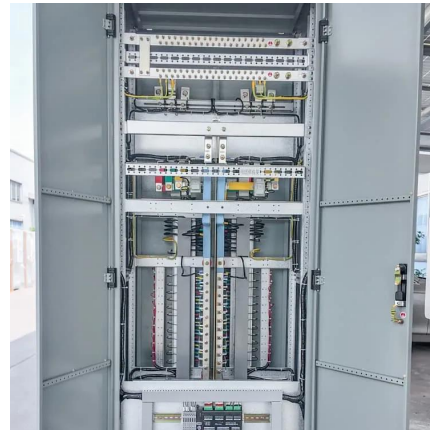
Conclusion The angle at which solar panels are installed is a vital element in maximizing their efficiency and energy output. By understanding ...





Best Angle And Orientation For Solar Panels - Forbes Home

For most locations, solar panels installed at a fixed tilt equal to the site latitude ± 15 degrees will capture reasonable sunlight year-round. However, calculating precise annual and seasonal tilt ...

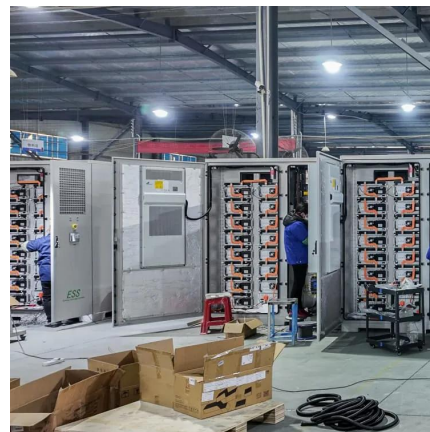


Best Angle And Orientation For Solar Panels - Forbes Home

Typically, an ideal angle for your solar panels will be equal or close to the latitude of your home. However, proper solar panel angle will fluctuate over the course of the year. For

What Angle Should My Solar Panels Be? Understanding the Basics of Solar

Recent research emphasizes that determining what angle should my solar panels be at for optimal positioning can enhance power generation by 7-8% annually compared to ...



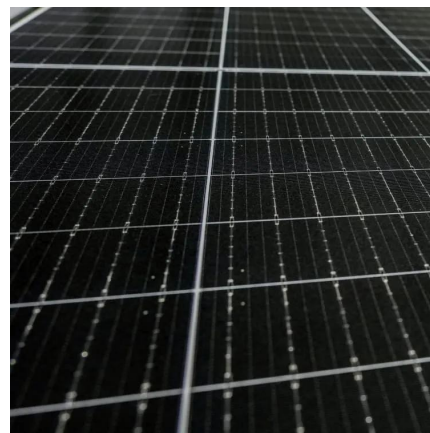
What is the Suggested Tilt Angle of a Photovoltaic Solar Panel?

When designing a photovoltaic solar panel system, one of the most critical factors to consider is the tilt angle of the panels. The tilt angle, or the angle at which the panels are inclined relative ...



The Best Angle for Solar Panel Installation

In general, solar panels should be installed so the sunlight hits them at as close to a perpendicular 90-degree angle for as long as possible ...



What Is The Best Angle/Direction To Install Solar ...

A solar panel's energy production can be positively or negatively affected by its orientation to the sun, and understanding how the angle impacts performance ...

The Best Angle for Solar Panel Installation

In general, solar panels should be installed so the sunlight hits them at as close to a perpendicular 90-degree angle for as long as possible during the day. To achieve that goal, ...





Optimum Solar Panel Angle - Best Angle For Solar ...

The optimum solar panel angle to maximize power output depends on the system geophysical location and the season. In Summer the angle can ...

What Angle Should My Solar Panels Be?

Recent research emphasizes that determining what angle should my solar panels be at for optimal positioning can enhance power generation ...

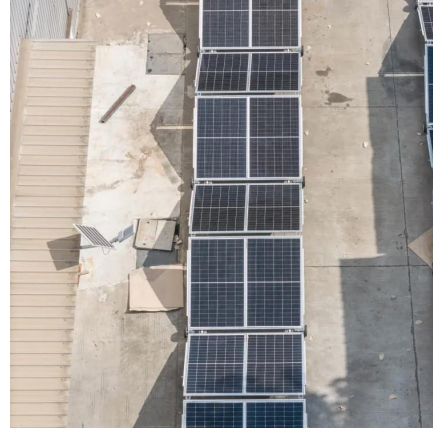


Solar panel inclination angle, location and orientation

In winter, the optimum angle is close to 50°, and in summer, the ideal angle is around 15 degrees. However, some conditions can alter this premise.

Solar Panel Orientation and Tilt: Getting the Most Out of Your ...

Maximise your solar output in Australia! Learn about optimal tilt angle and solar panel placement for your system. Get solar expert advice from Energy Matters and boost your ...



Contact Us

For catalog requests, pricing, or partnerships, please visit:
<https://www.talbert.co.za>