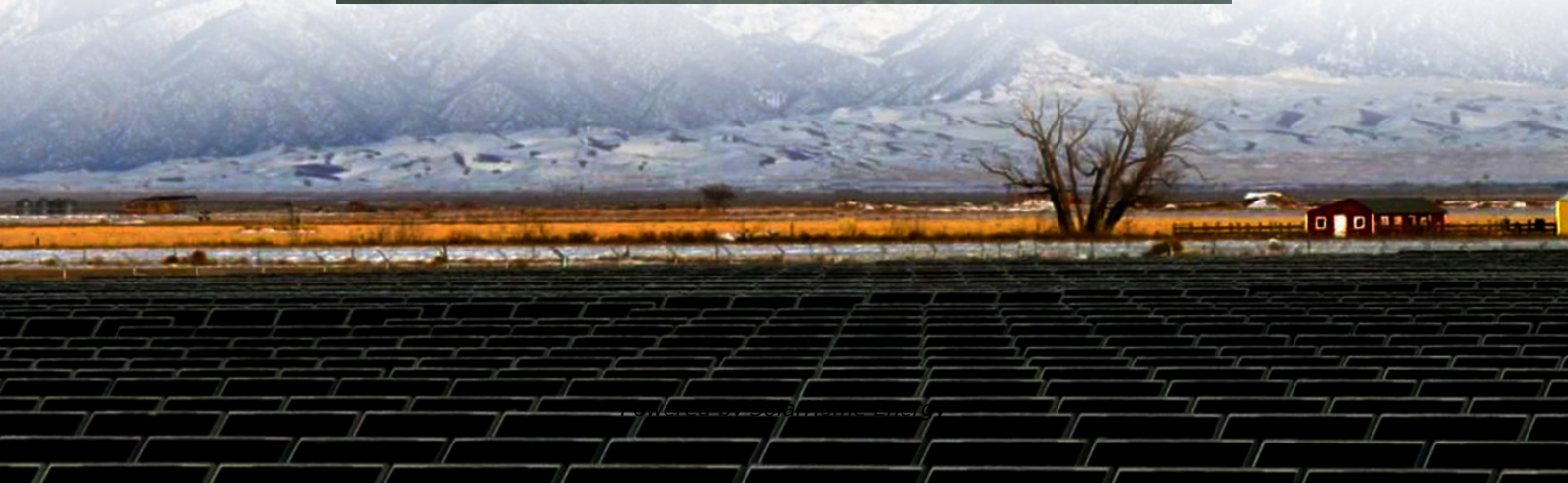


How many watts should I choose for a mobile outdoor battery cabinet





Overview

It depends on your devices and usage—but most users require 300W to 2,000W for reliable power. Imagine being halfway through a camping trip when your fridge and phone die, or losing work during a blackout because your laptop battery drained. How to choose a portable power station?

The next step is to consider the capacity of the portable power station. The capacity of the power station will determine how long it can run your devices. Capacity is measured in watt-hours (Wh) and indicates how much electricity the portable power station can store.

How to calculate portable power station wattage?

You can calculate this value by a simple method: Take the wattage each device you wish to power requires and multiply it by the number of hours they are used. After figuring out what size portable power station I need, you are probably asking yourself: Which one should I choose?

.

What wattage does a portable power station need?

For example, if you plan to power a device that requires 1,000 watts, you'll need a portable power station with an output wattage of at least 1,000 watts. Remember: some devices may have a higher startup or surge wattage, which is the extra wattage required when the device is first turned on. AC Output: This is the standard household outlet type.

How much power does a power station need?

This formula calculates the minimum capacity (in Wh) your power station needs to deliver enough power to the devices over the specified runtime.
Example 1: "You need a power station with at least 705.88 Wh capacity.
Example 2: "You need a power station with at least 1466.67 Wh capacity.

How many Watts Does a power station use?



Watt-hours measure the energy capacity of a power station. For example, a 1000 Wh power station can provide 1000 watts of power for 1 hour or 500 watts for 2 hours. 2. How do I find my device's power consumption?

.

How much power do you need for a camping trip?

Our simplest recommendations are: Small portable power station (at least 300 watt-hours): Sufficient for a family of four looking to camp for a long weekend with a typical amount of electronics (one smartphone each, one to two tablets total, and one to two laptops total).



How many watts should I choose for a mobile outdoor battery cabin

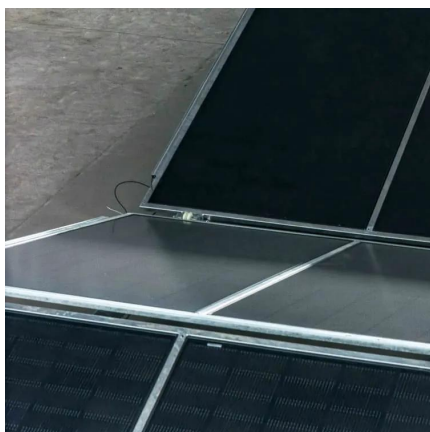
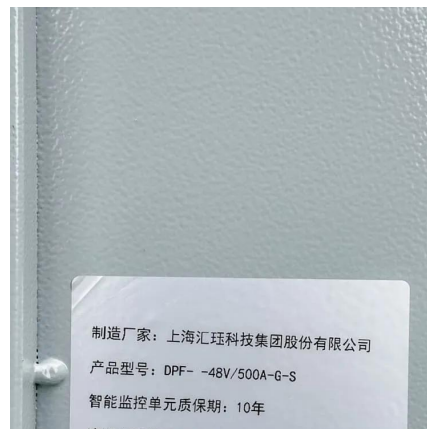


How Big Of A Portable Power Station Do I Need?

The key to determining your needs is knowing the wattage requirements of the devices you intend to power. Portable power stations are typically rated in watt-hours (Wh), ...

How Many Watts Do I Need for a Portable Power Station

Determining the right wattage for your portable power station requires understanding both continuous power needs and startup surges. Most devices list their ...



How do I choose a portable power station?

Well, how many drones and for how many hours? I mean, you could just power the lot with DC, take a battery with you and recharge it at home.
- Two drones for 4 days, about 3 ...

Choose the Right Charger and Power Your Gadgets ...

A PC USB charger delivers 2.5 Watts of power (5 volts at 500 mA). An iPhone charger delivers 5



Watts (5 volts at 1000 mA). A Retina iPad ...



How many watts should an outside light be?

How bright should outdoor lights be? How bright should exterior lights be? A: How bright should the lights be? A: In the dark, a small amount of light is needed. The 25 to 40 watt ...



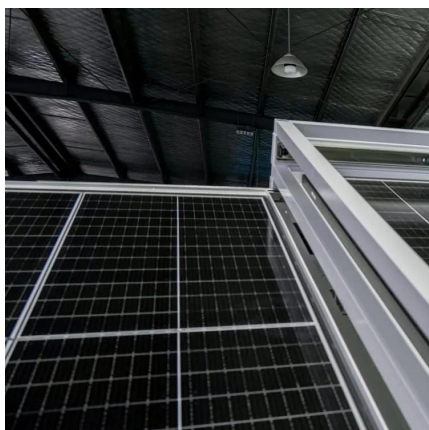
ESTEL Outdoor Battery Cabinet Buying Guide for 2025

Find tips to choose the best outdoor battery cabinet for your energy needs, focusing on size, cooling, durability, and future expansion options.



How to Select the Right Size Portable Power Station For Your ...

To select the correct portable power station for your needs, the capacity should be greater than the total wattage required. However, it's important to note that the capacity of the portable ...





How to choose the best portable power station for you ...

But, in general, portable power stations refer to the larger (typically 200 watt-hours or more) units designed for serious power backup. These are ...



[How to Calculate Power Needs for Camping ...](#)

Explore our comprehensive guide on how to calculate power needs for camping equipment. From fridges to lanterns, learn the essential tips for ensuring you ...

How Many Batteries for Off Grid: Your Comprehensive Guide to ...

Conclusion Understanding how many batteries for off grid living you need is crucial for ensuring your energy independence and sustainability. By assessing your daily energy consumption, ...



Beginner's Guide to Portable Power for Camping (2025)

I've been using battery-based setups for years across deserts, forests, and campgrounds -- and in this guide, I'll walk you through everything I wish I'd known starting ...



Wattage For Outdoor Lights: Options To Consider

Even as you choose the right watts for outdoor lights, it is important to consider: Light efficiency
- So far, LED lights for outdoor are more energy
...



How much power do you need to fill a venue with sound?

Small venues need small amplifiers. Large venues need racks and racks of amps. But how do you know how much power is enough?



Portable Power Station Size Calculator

By inputting your devices' total power consumption, desired runtime, and power station efficiency, you'll get an accurate estimate of the required capacity in Watt-Hours (Wh). ...



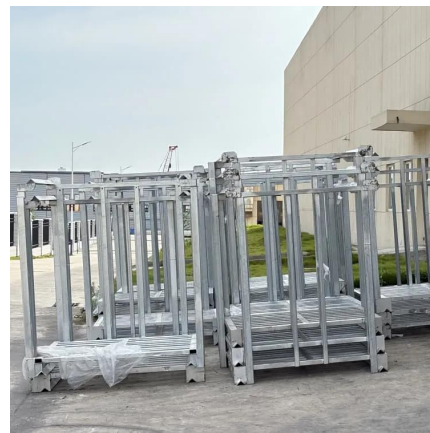


What Size Portable Power Station Do I Need? An ...

Learn how to calculate your energy needs and choose the perfect power station for home, outdoor, or emergency use.

UPS Calculator

The UPS Calculator assists users in selecting a UPS system that matches their power backup needs by calculating the required capacity.



How to Choose the Right PA System

Exactly how many watts you need hinges on a number of variables. The most obvious of these is the performance location (room size, indoor/outdoor, acoustics). However, ...

Battery Run Time Calculator

Calculate battery run time for 12V, 24V, and 48V batteries based on battery capacity & power consumption.



How to Select the Right Size Portable Power Station For Your ...

To select the correct portable power station for your needs, the capacity should be greater than the total wattage required. However, it's important to note that the capacity of the ...



What Is A Good Wattage For Outdoor Speakers?

If you're looking to upgrade your outdoor sound system, wattage is one of the most important things to consider. But what is wattage, exactly?
...



What Size of a Portable Power Station Do I Need for Camping?

Discover how to choose the perfect portable power station size for your camping needs. From basic overnight trips to weeklong off-grid adventures, find the ideal capacity and ...





[Portable Power Station Size Calculator](#)

By inputting your devices' total power consumption, desired runtime, and power station efficiency, you'll get an accurate estimate of the ...



How to choose the best portable power station for you

But, in general, portable power stations refer to the larger (typically 200 watt-hours or more) units designed for serious power backup. These are the kinds you would more likely ...

What Size Portable Power Station Do I Need? An Ultimate Guide

Learn how to calculate your energy needs and choose the perfect power station for home, outdoor, or emergency use.



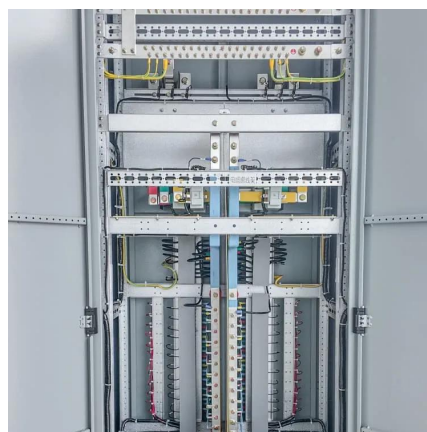
Calculate Your Power Needs

A power outage can be an inconvenience for many, however for people who depend on life-saving medical equipment, even small power outages can be life threatening. Thoughtfully ...



What Size Portable Power Station Do I Need

Choosing the right size involves balancing your power needs with portability and budget. If you need to power several devices for a weekend camping trip, a medium-sized ...



How to Easily Calculate Wattage Needs for Portable ...

Selecting the right portable generator for your needs ensures a reliable power supply. Whether preparing for emergencies, planning an ...

How to Buy the Best Power Bank

Consider a mobile hotspot if maintaining a consistent and secure internet connection is as important as keeping your devices charged. A mobile hotspot can connect multiple devices to ...





How to Calculate Power Needs for Camping Equipment

Explore our comprehensive guide on how to calculate power needs for camping equipment. From fridges to lanterns, learn the essential tips for ensuring you have the right portable power ...

Contact Us

For catalog requests, pricing, or partnerships, please visit:
<https://www.talbert.co.za>