

How many watts of solar inverter





Overview

Before we go any further, we highly recommend that you choose a pure sine wave inverter. This type of inverter delivers high-quality electricity, similar to your utility company. This way, none of your appliances run the risk of being damaged. Now, when it comes to sizing your inverter, you always need to check.

We have summarized the appliances that inverters from 300W to 3000W can run depending on their rated maximum power. Note to our readers: Use the above formula to determine.

In typical residential installations, inverters are generally rated between 1,000 watts to 7,000 watts, catering to average household energy consumption requirements. For commercial applications, the figures often increase with inverters in the range of 10,000 to 100,000 watts. How to size a solar inverter?

The right way to size an inverter is to check the wattage. The inverter wattage must be the same or greater than your solar panel's watts. Here is a chart that shows the watts consumption of various appliances and what inverter size you will need. Note that this guide includes a 20% safety margin for the inverter watts.

How many watts a solar inverter do I Need?

A 200 watt portable unit such as the NDDI Direct Power Inverter will be sufficient for that. If you are going to run an air conditioner or a refrigerator in your RV, a more powerful inverter and battery are required. Ready to size your solar system the smart way?

.

What size inverter do I Need?

Inverters come in different sizes starting from as little as 125 watts. The typical inverter sizes used for residential and commercial applications are between 1 and 10kW with 3 and 5kW sizes being the most common. With such an array of options, how do you find the right size for you?



An inverter works best when close to its capacity.

How is inverter size measured?

As we mentioned, inverter size is measured in watts. There are two ways this measurement is carried out, continuous watts and surge watts. It is important that you consider this since many people make mistakes, assuming running/continuous watts is peak/surge watts and vice versa.

What is a solar inverter?

Solar inverters are the brains of the operation when it comes to solar systems. The inverter is the central meeting point for the power coming from the solar panels, grid power in and out, battery power in and out, and sometimes a generator port.

Is a 3000 watt inverter enough?

If your devices require 400 watts and you have 300 continuous / 200 surge inverter, it is not enough. A 3000 watt inverter usually has 6000W surge power, or double the running watts. Most of the attention in solar power is focused on solar panels, but do not neglect the inverter.



How many watts of solar inverter



What Size Inverter Needed for Solar Panels?

The size of the inverter will be determined by the watts of your solar panels. A general rule of thumb is that you will need a 1,000 watt (1kW) ...

How Many Solar Panels Can One Inverter Handle?

How many solar panels for a 2000-watt inverter? For a 2000-watt inverter, the number of solar panels depends on panel wattage, but a general ...



How many watts does a solar inverter have? , NenPower

In typical residential installations, inverters are generally rated between 1,000 watts to 7,000 watts, catering to average household energy ...

A Guide to Solar Inverters: How They Work & How to ...

Learn what a solar inverter is, how it works, how different types stack up, and how to choose



which kind of inverter for your solar project.



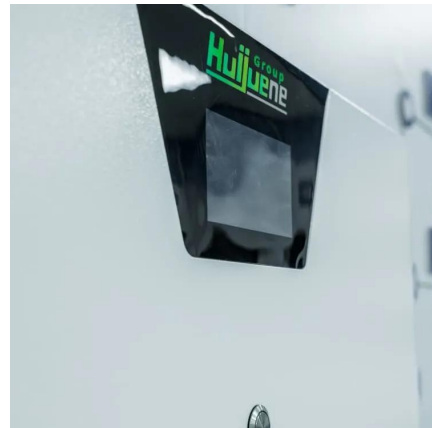
How many solar panels can I use with a particular inverter?

To determine the minimum number of solar panels you can use with an inverter, take the inverter's minimum input voltage (aka start voltage) and divide by your solar panel's Open ...



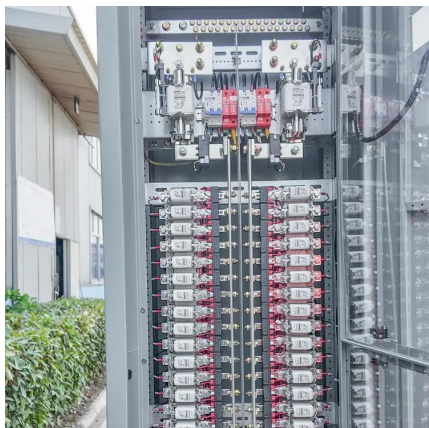
What Inverter Size Do I Need to Run a Laptop?

$100 + 20\% = 120$ So a 100 watt laptop needs 120 watts of inverter power to run. That is the minimum requirement though, and it won't hurt to use a larger inverter. If you add a modem ...



Inverter Amp Draw Calculator: Let's Simplify It

Short on Time? Here's The Article Summary The article discusses the importance of monitoring the amp draw of an inverter in a solar power system to manage ...





[Watts, Volts, Amps Calculator - self2solar](#)

Learn about Watts, Volts, Amps unit conversion, estimate whether your solar inverter and battery match certain appliances.

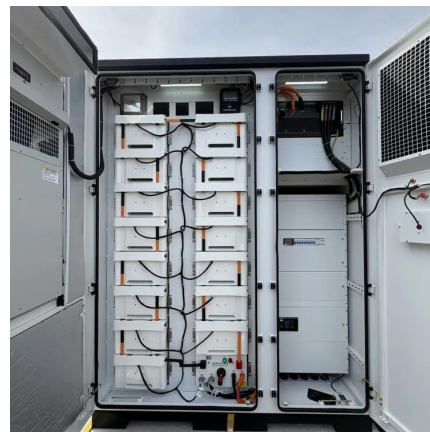


How many watts does a solar inverter have? , NenPower

In typical residential installations, inverters are generally rated between 1,000 watts to 7,000 watts, catering to average household energy consumption requirements. For ...

[The Only Inverter Size Chart You'll Ever Need](#)

During our research, we discovered that most inverters range in size from 300 watts up to over 3000 watts. In this article, we guide you through the different inverter sizes.



[How To Size An Inverter for Solar and Off Grid](#)

In order to determine what size inverter you need, you have to know how much power your load draws. If you use an inverter that is not ...



How Much Power Does a Solar Inverter Use: An ...

Solar inverters can consume up to 40 watts of power even when not in use, impacting the overall energy output of your solar system. Inverter ...



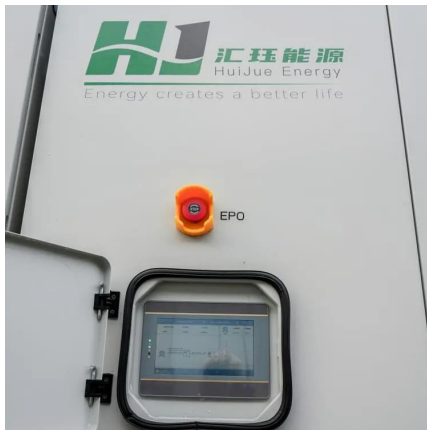
How To Size An Inverter for Solar and Off Grid

In order to determine what size inverter you need, you have to know how much power your load draws. If you use an inverter that is not capable of providing enough current ...

How Many Solar Panels Do I Need For a 1000 Watt ...

As renewable energy gains increasing attention, solar panels have become a popular choice for power generation. When preparing to install a ...





[How Many Solar Panels Do I Need For 4000 Watts?](#)

You may be wondering how many solar panels you need to power your home. The answer may surprise you - you can generate a lot of power with just a few solar panels. In ...

[How To Size A Solar Inverter in 3 Easy Steps](#)

Solar inverters come in a range of sizes. What Size Solar Inverter Do I Need? Inverters come in different sizes starting from as little as 125 watts. The typical ...



[What Size Inverter Needed for Solar Panels?](#)

The size of the inverter will be determined by the watts of your solar panels. A general rule of thumb is that you will need a 1,000 watt (1kW) inverter for every 1 kilowatt (kW) ...

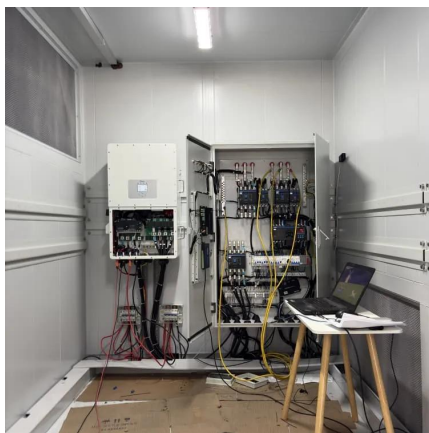
RV Solar Calculator + Essential Guide to RV Solar Power

Learn the basics of RV solar and how the solar panels, batteries, charge controller, and inverter work together to give you off-grid power. Use this free RV solar calculator tool to ...



[How To Size A Solar Inverter in 3 Easy Steps](#)

Solar inverters come in a range of sizes. What Size Solar Inverter Do I Need? Inverters come in different sizes starting from as little as 125 watts. The typical inverter sizes used for residential ...



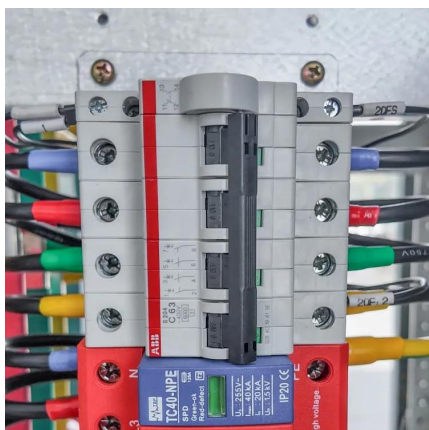
Solar Panel Output Calculator , Get Maximum Power ...

Use Solar Panel Output Calculator to find out the total output, production, or power generation from your solar panels per day, month, or in ...



How Many Watt Inverter Do I Need? , Click to Learn More

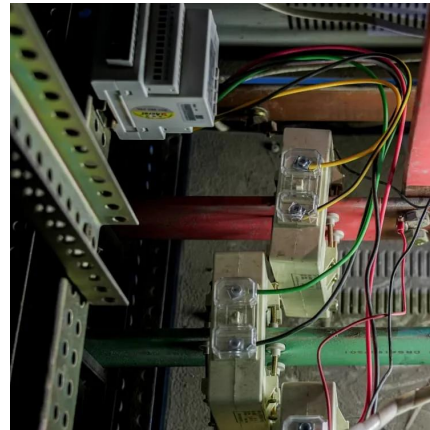
If the total power requirement is 800W, an inverter rated to support 1000W or higher is highly suggested. Many choose inverters that can support the maximum load or the ...





How Many Solar Panels Do I Need For a 6000 Watt ...

Power Up with Solar Panels: Optimize Your 6000W Inverter! Take charge of your energy future and go solar for a brighter tomorrow!

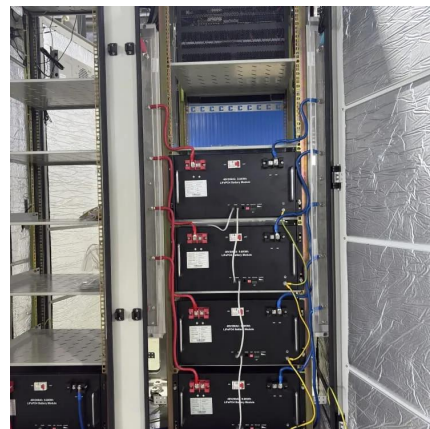


Solar Inverter Size Chart

The inverter wattage must be the same or greater than your solar panel's watts. Here is a chart that shows the watts consumption of various appliances and what inverter size you will need.

1500 Watt Heater: What Size Inverter & Solar Panel ...

What size inverter for 1500 watt heater? To run a 1500-watt heater you need at least 2000 watt pure sine wave inverter. The inverter will convert ...



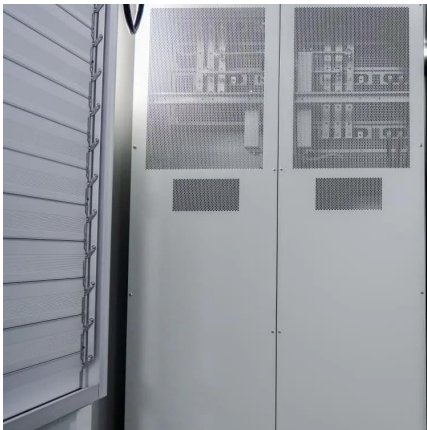
How to Calculate Solar Panel, Battery, and Inverter Size

In general, your inverter capacity should be approximately the same size as the total wattage of your solar panels.



A Guide To Solar Inverter Sizing

Should the home draw, for example, 2500 watts at peak consumption, the inverter should have a continuous power output rating of at least 2500 watts.



[Inverter Size Calculator - self2solar](#)

Determining the Inverter Size to Match the Solar Panel Array Determining the correct inverter size depends on your solar array's capacity ...

How many watts does a solar inverter have? , NenPower

The power rating of a solar inverter is contingent on various factors, including its design, intended application, and the specific solar power system ...





How Much Power Does a Solar Inverter Use: An Overview

Solar inverters can consume up to 40 watts of power even when not in use, impacting the overall energy output of your solar system. Inverter efficiency, size, and ...

Contact Us

For catalog requests, pricing, or partnerships, please visit:
<https://www.talbert.co.za>