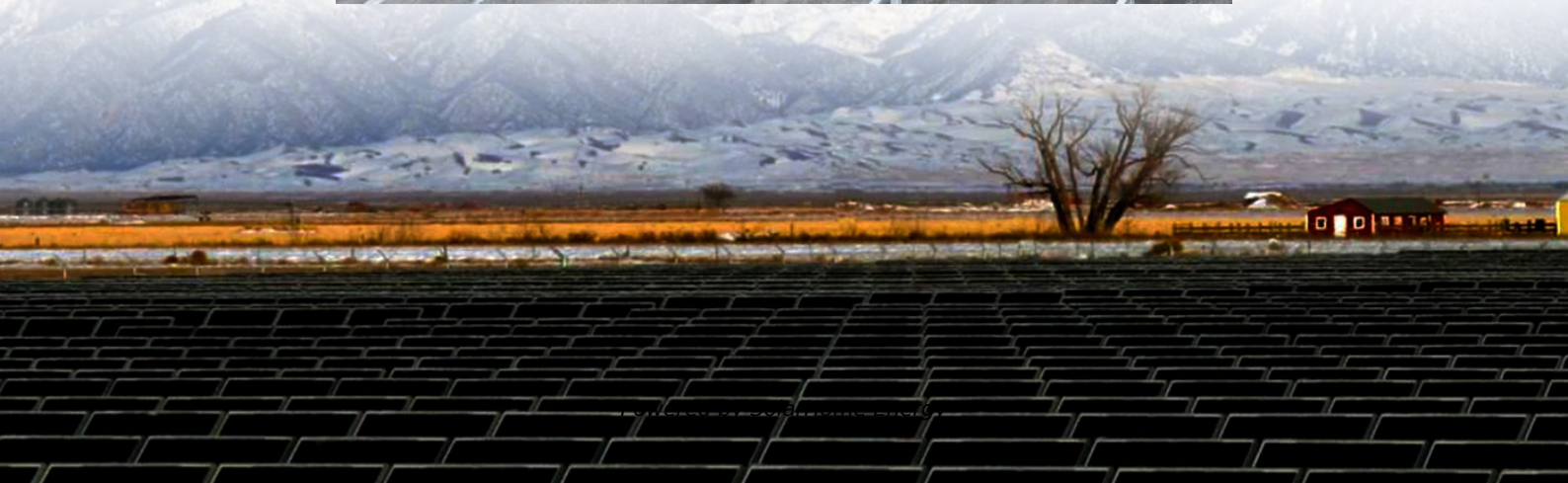
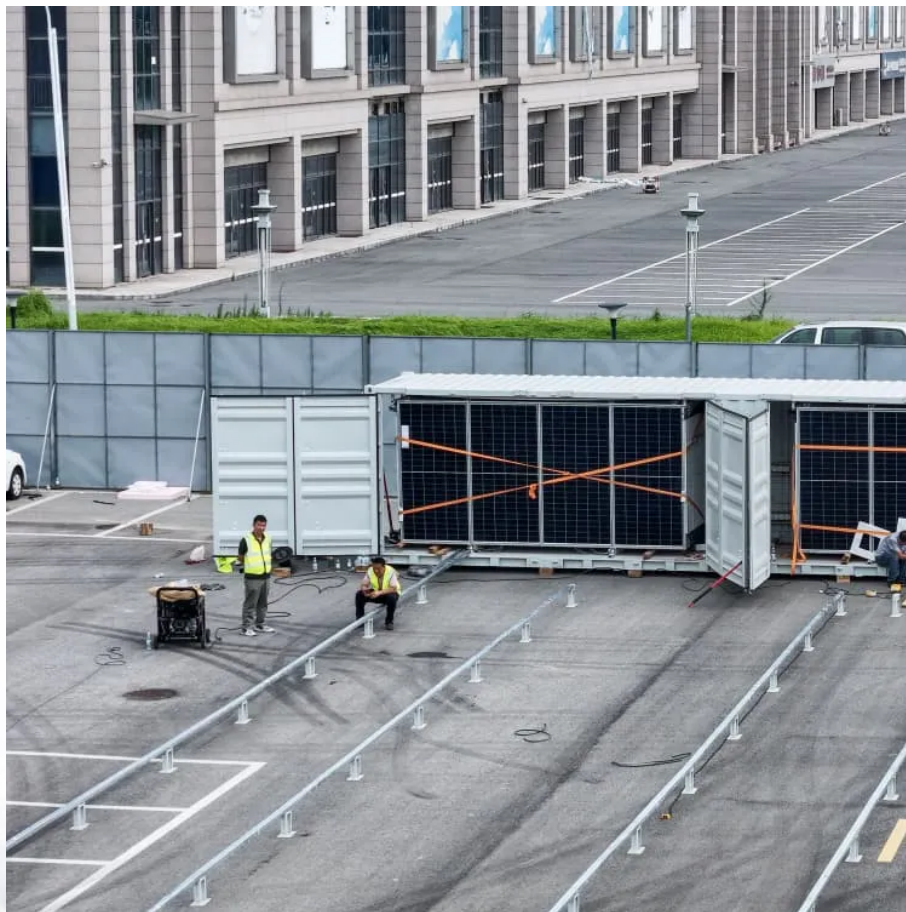


How many watts of solar energy can be installed in 6 square meters





Overview

The conversion of 6 square meters of solar panels can produce around 1,500 to 2,000 watts of solar energy, depending on various factors. These factors include the efficiency of the solar panels, the geographical location, and the specific sunlight conditions at different times of the year. What is solar panel watts per square meter (W/M)?

Solar panel watts per square meter (W/m) measures the power output of a solar panel based on its size. Compare solar panels to see which generates most electricity per square meter. A higher W/m value means a solar panel produces more power from a given area. This can help you determine how many solar panels you need for your energy needs.

How many watts can a solar panel generate?

This means that for every square meter of this solar panel, you can generate 180 watts of power under optimal conditions. Panel Orientation and Tilt: The angle at which the panel is installed can significantly affect its efficiency. Solar panels should be oriented to face the sun as directly as possible throughout the day.

How much energy does a solar panel produce per square meter?

Given Egypt's high solar irradiance levels, which can reach up to 2200 kWh/m² annually, the potential power output per square meter of a solar panel can be quite significant. For a solar panel with an efficiency of 18%, this translates to an annual energy production of about 396 kWh/m².

What is a solar power per square meter calculator?

It also includes wiring, inverter, charge controller, and battery bank (if used). A solar power per square meter calculator takes details regarding these factors and then gives the accurate output generated by the solar panel per square meter. After this, it's time to learn about solar panel output calculators.



How many solar panels can fit on a 600 sq ft room?

You can put a 7.763 kW solar system on a 600 sq ft room. If you use only 100-watt panels, you will be able to fit 77 of them on the roof. If you use only 300-watt panels, you will be able to fit 25 of them on the roof. If you use only 400-watt panels, you will be able to fit 19 of them on the roof.

How many watts can a 400 watt solar panel produce?

A 100-watt panel can produce 100 watts per hour in direct sunlight. A 400-watt panel can generate 400 watts per hour under the same conditions. This doesn't mean they'll produce that amount all day, output varies with weather, shade, and panel orientation. Solar Power Meter Digital Solar Energy Meter Radiation Measuremen.



How many watts of solar energy can be installed in 6 square meters



How Many Solar Panels Needed For 1 MW POWER ...

Here You Will Learn How Many Solar Panels Are Needed For 1 MW. Accordingly, to set up solar panels of 1 megawatt, you need over 6000 ...

How Many Solar Panels Fit on an Acre?

An acre of land can fit anywhere from 1,500 to 2,000 solar panels. The exact number will depend on the model of the photovoltaic panel, the type ...



Calculate Rooftop Area for Solar Panel Installation

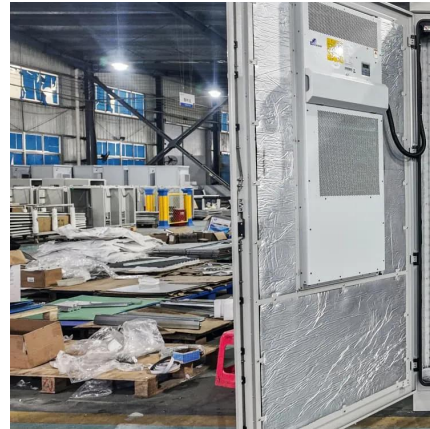
Navitas Solar offers a guide on calculate rooftop area for solar panels, ensuring efficient space usage and optimal solar energy generation.

How much Photovoltaics in 1 Hectare?

1. The Greatness of an Hectare One hectare corresponds to about 10,000 square meters, or 2.47 acres. This expanse of land can be exploited



in a variety of ...



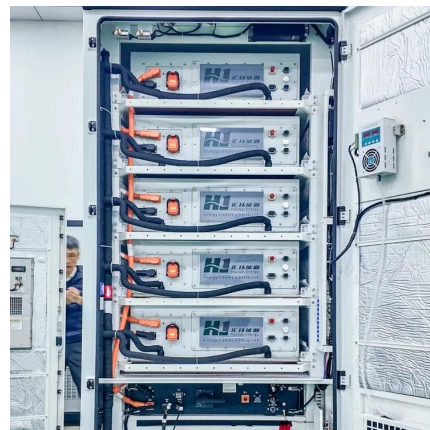
Solar Panel Power Per Square Meter: How to Calculate Efficiency

Power Output= $0.18 \times 1000 \text{ W/m}^2 = 180 \text{ W/m}^2$. This means that for every square meter of this solar panel, you can generate 180 watts of power under optimal conditions. Panel ...



Solar Panel kWh Calculator: kWh Production Per Day, ...

Solar Output = Wattage \times Peak Sun Hours \times 0.75 Based on this solar panel output equation, we will explain how you can calculate how many kWh per day ...



Solar Panel Wattage Explained: How Many Watts Do You Need?

On average, a solar panel produces around 150 to 200 watts per square meter. This can vary due to: Example: A 1.7 m² panel with 20% efficiency will produce about 340W in full ...





[How Many Solar Panels to Power a House?](#)

We will also look at how much power solar panels can produce, the number of panels required based on your home's square footage, and the ...

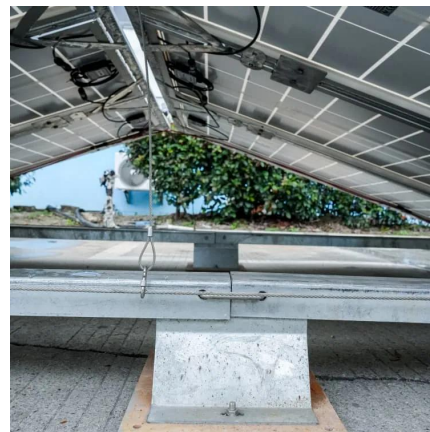


[How much solar power can my roof generate?](#)

In a perfect world, the average roof in the U.S. can generate around 21,840 kilowatt-hours (kWh) of solar electricity annually--that's more than most homes need. But ...

How Many Solar Panels Per Acre

If you want to know how many solar panels per acre you need to set up you're own solar farm, you're in the right place. We cover all the calculations you ...



Solar Rooftop Calculator: How Many Solar Panels Can

We have calculated how many of either 100-watt, 300-watt, or 400-watt solar panels you can put on roofs ranging from very little 300 sq ft roof to huge 5,000 sq ft roof, and summarized the ...



Solar Panel Calculator: How Many Do You Need?

Solar panel sizes are measured in Watts (W), which is a rate of electrical flow. We'll use your energy use in Watt-hours to determine how many Watts of solar panels you ...



How Many Solar Panels Needed To Power Average House

Panel Size: Standard solar panels are about 1.6m x 1m (1.6 square meters). Calculate the total roof space required by multiplying the number of panels by the area of one ...

Solar Power per Square Meter Calculator

A solar power per square meter calculator takes details regarding these factors and then gives the accurate output generated by the solar panel per square meter.



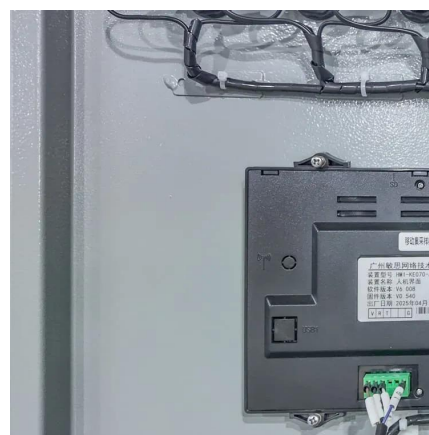


[Solar Power Roof Area Calculator , Roof Space ...](#)

She uses the Solar Power Roof Area Calculator to determine if her roof can accommodate a 7 kW system. By inputting her panel efficiency of ...

[Solar Power per Square Meter Calculator](#)

We have calculated how many of either 100-watt, 300-watt, or 400-watt solar panels you can put on roofs ranging from very little 300 sq ft roof to huge ...



How to Calculate the Surface Area Required by Solar Panels

Lets assume that you want to install 10 solar panels rated at 100 Watts each and having a conversion efficiency of 18%. The total power output of the solar system can be ...

Total Area Required for Solar Panel Installation Calculator

Calculate the total area needed for your solar panel installation quickly and accurately with our easy-to-use solar panel area calculator.



Solar Panel Output per Square Meter: Efficiency Factors & Future

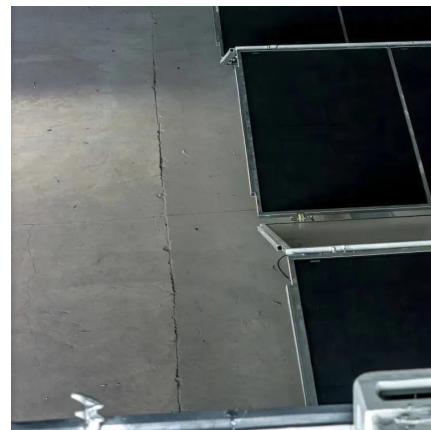
...

When panel efficiency reaches 30%, a 100m² roof could generate 50,000kWh/year - enough to power 20 average homes. The solar revolution isn't coming; it's already here. Solar panels ...



Solar Panel Wattage Explained: How Many Watts Do ...

On average, a solar panel produces around 150 to 200 watts per square meter. This can vary due to: Example: A 1.7 m² panel with 20% ...



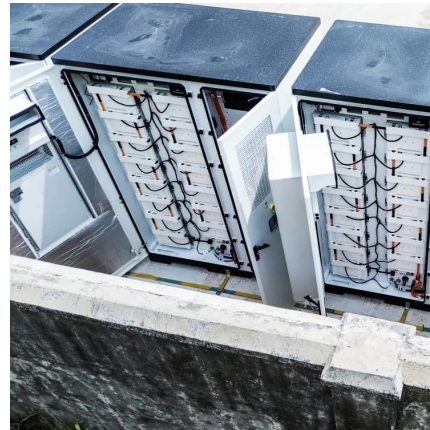
Solar Panel Output Calculator

Use this solar panel output calculator to find out the total output, production, or power generation from your solar panels per day, month, or in ...



PVWatts Calculator

NREL's PVWatts ® Calculator Estimates the energy production of grid-connected photovoltaic (PV) energy systems throughout the world. It allows homeowners, small building owners, ...

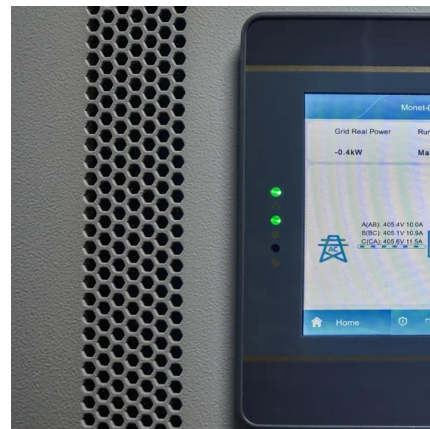


Solar Calculator , Calculator.now

Estimate solar panel size, energy output, savings, and environmental impact with this easy-to-use solar energy calculator for homes and businesses.

How many watts of solar energy can produce 6 square meters

The conversion of 6 square meters of solar panels can produce around 1,500 to 2,000 watts of solar energy, depending on various factors. These factors include the efficiency ...



Solar Panel Power Per Square Meter: How to ...

Power Output= $0.18 \times 1000 \text{ W/m}^2 = 180 \text{ W/m}^2$. This means that for every square meter of this solar panel, you can generate 180 watts of power ...



Total Area Required for Solar Panel Installation ...

Calculate the total area needed for your solar panel installation quickly and accurately with our easy-to-use solar panel area calculator.



How Many Solar Panels Per Acre?

Discover how many solar panels per acre of land and factors influencing the number. Learn about solar panel size.

[How much solar power can my roof generate?](#)

In a perfect world, the average roof in the U.S. can generate around 21,840 kilowatt-hours (kWh) of solar electricity annually--that's more ...





[Solar Panel Calculator: How Many Do You Need?](#)

Solar panel sizes are measured in Watts (W), which is a rate of electrical flow. We'll use your energy use in Watt-hours to determine how ...

[Solar Panel Watts Per Square Meter Explained](#)

Learn how to measure solar panel efficiency using solar panel watts per square meter with this comprehensive guide.



Solar Panel Output per Square Meter: Efficiency ...

When panel efficiency reaches 30%, a 100m² roof could generate 50,000kWh/year - enough to power 20 average homes. The solar revolution ...

Contact Us

For catalog requests, pricing, or partnerships, please visit:
<https://www.talbert.co.za>