

# **How many watts of solar energy are required per square meter**





## Overview

---

The average power output of a solar panel is approximately 150 to 400 watts per square meter, depending on various factors including the technology used and the angle of sunlight. 2.How many Watts Does a solar panel produce per square meter?

On average, a solar panel produces around 150 to 200 watts per square meter. This can vary due to: Example: A 1.7 m<sup>2</sup> panel with 20% efficiency will produce about 340W in full sun. Note: Monocrystalline panels lead in efficiency, making them ideal for rooftops with limited space.

How do you calculate solar panel output in watts per square meter?

The formula to calculate the solar panel output and how much energy solar panels produce (in watts) using watts per square meter is as follows: Solar Panel Output (W) = Watts per Square Meter (W/m<sup>2</sup>) × Area of Solar Panel (m<sup>2</sup>).

How much solar energy is received per square meter?

The amount of solar intensity received by the solar panels is measured in terms of square per meter. The sunlight received per square meter is termed solar irradiance. As per the recent measurements done by NASA, the average intensity of solar energy that reaches the top atmosphere is about 1,360 watts per square meter.

What is a solar power per square meter calculator?

It also includes wiring, inverter, charge controller, and battery bank (if used). A solar power per square meter calculator takes details regarding these factors and then gives the accurate output generated by the solar panel per square meter. After this, it's time to learn about solar panel output calculators.

How much power does a solar panel system generate?



Scenario: A solar panel system generates 1,500 watts of power and covers an area of  $10 \text{ m}^2$ . Practical impact: The system generates 150 watts of power per square meter, which helps assess its efficiency and potential upgrades. Scenario: A lighting system consumes 300 watts and illuminates an area of  $50 \text{ m}^2$ .

How many watts can a 400 watt solar panel produce?

A 100-watt panel can produce 100 watts per hour in direct sunlight. A 400-watt panel can generate 400 watts per hour under the same conditions. This doesn't mean they'll produce that amount all day, output varies with weather, shade, and panel orientation. Solar Power Meter Digital Solar Energy Meter Radiation Measuremen.



## How many watts of solar energy are required per square meter

---

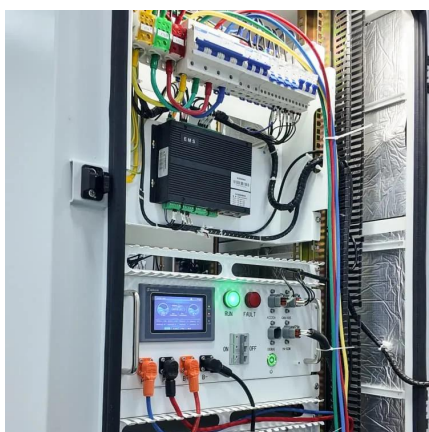


### Solar Panel Calculator

It takes into account factors such as the daily energy needs of a household or business, the efficiency of the solar panels, the average peak sun hours per day in the location where the ...

### How Much Solar Power Is In One Square Kilometer Muller

5 days ago· How Much Solar Energy Is Received Per Square Meter? The intensity of solar energy received by solar panels is quantified in watts per square meter, termed solar ...



### How Much Solar Energy Hits The Earth Per Square Meter

The amount of solar energy per unit area arriving on a surface at a particular angle is called irradiance which is measured in watts per square metre, W/m<sup>2</sup>, or kilowatts per ...

### Solar Panel Wattage Explained: How Many Watts Do You Need?

On average, a solar panel produces around 150 to 200 watts per square meter. This can vary due



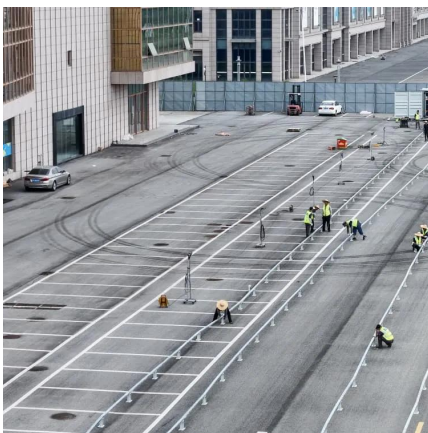


to: Example: A 1.7 m<sup>2</sup> panel with 20% efficiency will produce about 340W in full ...



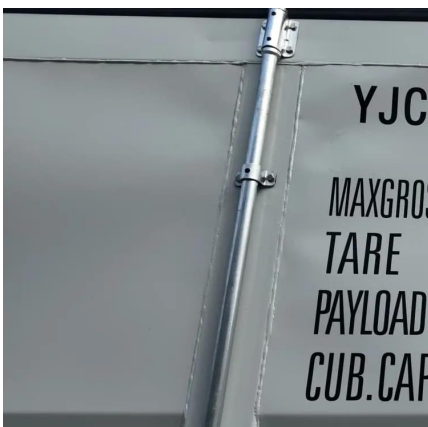
## Solar Panel Calculator

To see if any of the panels available will fit your roof, you will first need to compute the number of solar panels needed: required panels = solar array size in kW × ...



## Unlocking the Power of Watt per Square Meter: Your ...

FAQs on Watt per Square Meter Here are some top questions and answers about W/m<sup>2</sup>: Q: What is a Watt per Square Meter used for? A: It measures energy ...



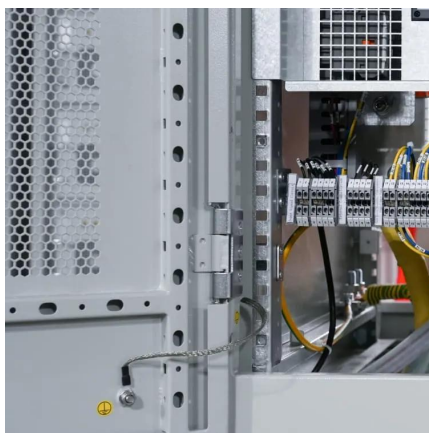
## Solar Panel Power Per Square Meter: How to Calculate Efficiency

This article will guide you through the essentials of calculating solar panel power per square meter, including the factors that influence efficiency and how to make the most of ...



## How many square meters is one watt of solar energy?

Solar irradiance, defined as the power per unit area received from the sun, plays a direct role in determining how many square meters are equivalent to one watt of energy.

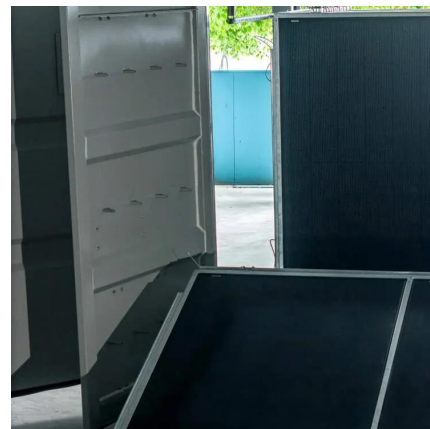


### [Solar Power per Square Meter Calculator](#)

As per the recent measurements done by NASA, the average intensity of solar energy that reaches the top atmosphere is about 1,360 watts per square meter. You can ...

## How to Calculate Solar Panel kWh

How to Calculate Solar Panel kWh: To find the power in kWh, consider panel size, efficiency, and the output per square meter of panels.



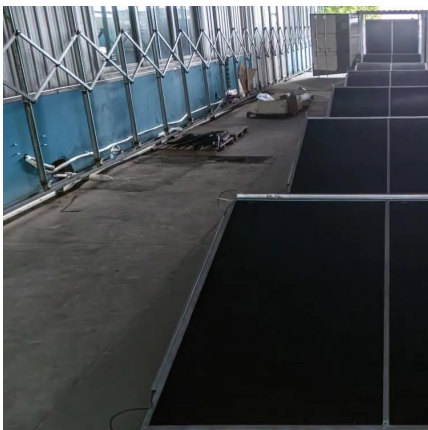
## POWER PER SQUARE METER CALCULATOR

This metric shows how much power a solar panel produces per square meter of surface area under standard conditions.. The average solar energy received ...



## Solar Panel Watts Per Square Meter Explained

Learn how to measure solar panel efficiency using solar panel watts per square meter with this comprehensive guide.



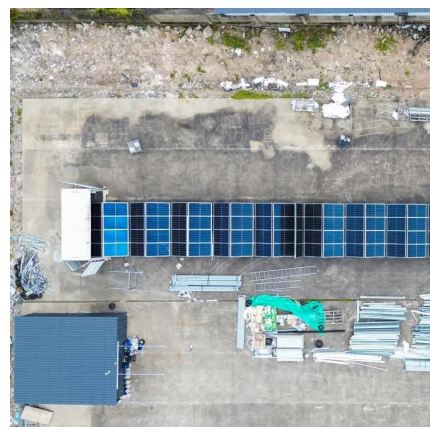
## **Power Per Square Meter Calculator**

**Solar Energy Potential:** On average, Earth's surface receives about 1,000 watts of solar power per square meter under direct sunlight.  
**Wind Turbines:** Modern wind turbines can ...

## **Solar Panel Output per Square Meter: Efficiency Factors & Future**

...

When panel efficiency reaches 30%, a 100m<sup>2</sup> roof could generate 50,000kWh/year - enough to power 20 average homes. The solar revolution isn't coming; it's already here. Solar panels ...





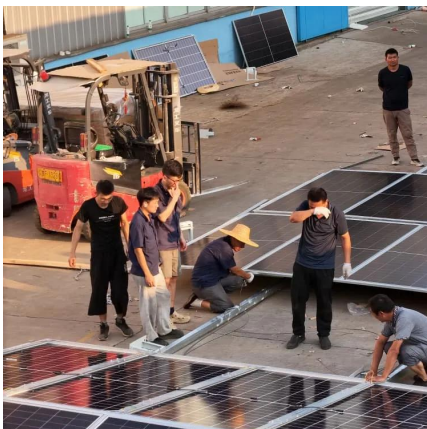


## Solar Panel Output per Square Meter: Efficiency ...

When panel efficiency reaches 30%, a 100m<sup>2</sup> roof could generate 50,000kWh/year - enough to power 20 average homes. The solar revolution ...

## [SOLAR POWER PER SQUARE METER CALCULATOR](#)

How many Watts Does a solar panel produce per square meter? The average solar panel has an input rate of roughly 1000 Watts per square meter, while the majority of solar panels on the ...



## [How Many Watts Per Meter Solar Power](#)

Solar energy per square meter is calculated by dividing the total amount of solar energy received by a surface by the total area of that surface. Globally, the Earth system ...

## How many watts per square meter is a solar panel? , NenPower

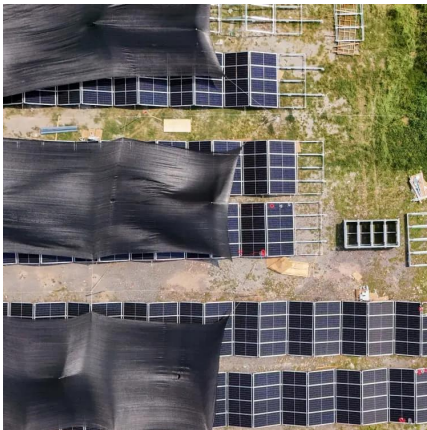
The average power output of a solar panel is approximately 150 to 400 watts per square meter, depending on various factors including the technology used and the angle of ...





## Daily Solar Irradiance Calculator

A Daily Solar Irradiance Calculator is a tool used to estimate the amount of solar energy received per square meter of a given location in a ...



## [Solar Power per Square Meter Calculator](#)

On average, a solar panel produces around 150 to 200 watts per square meter. This can vary due to: Example: A 1.7 m<sup>2</sup> panel with 20% ...



## Watts Per Square Meter Solar Panel

Watts per square meter (W/m<sup>2</sup>) is the power density of sunlight falling on a given area of solar panels. In the context of solar panels, it refers to the amount of electrical power a ...





## How many square meters is one watt of solar energy?

Solar irradiance, defined as the power per unit area received from the sun, plays a direct role in determining how many square meters are ...



## [Solar Panel Power Per Square Meter: How to ...](#)

This article will guide you through the essentials of calculating solar panel power per square meter, including the factors that influence efficiency ...

## Solar Panel Wattage Calculation: How To Calculate In 2025?

These standardized conditions include 1,000 watts per square meter of solar irradiance, 25°C cell temperature, and air mass of 1.5. The basic solar panel wattage formula is: Wattage = Voltage ...



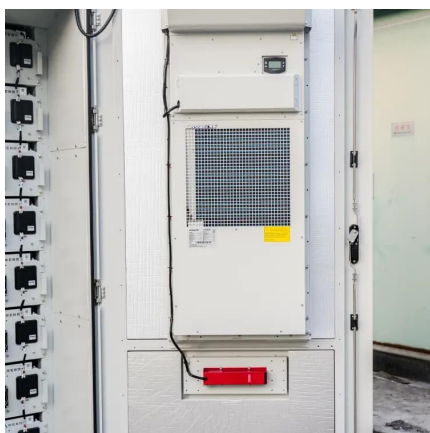
## Watts Per Square Meter Solar Panel

Watts per square meter ( $\text{W/m}^2$ ) is the power density of sunlight falling on a given area of solar panels. In the context of solar panels, it refers ...



## How many watts of solar energy are needed for 50 ...

To determine the watts of solar energy required for a 50 square meter area, several variables must be considered: 1. Solar panel efficiency, 2. ...

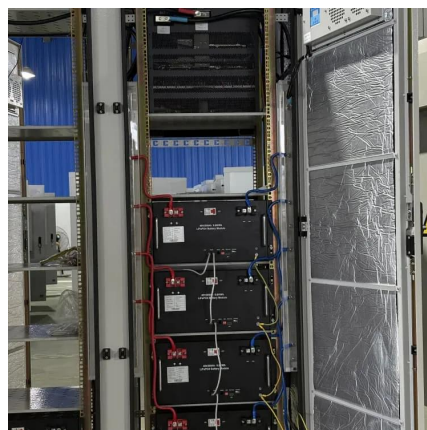


## Solar Panel Wattage Calculator

How Many Watts Does a 100 Watt Solar Panel Produce in a Day? The daily energy production of a 100-watt solar panel is influenced by the amount of sunlight it receives.

## Solar Panels Wattage Calculated

Solar Panel Output and Sizing Next, we have how to calculate solar panel and charge controller sizing. You will be required to enter your home state and city ...





## Contact Us

---

For catalog requests, pricing, or partnerships, please visit:  
<https://www.talbert.co.za>