

How many watts of 18V solar power can reach 10A





Overview

We usually measure or convert the watts into amps of solar panels to figure out how much current (amps) is being stored in the battery. Or we measure the amperage of the solar panel.

How much power can a solar panel produce?

Understanding wattage is essential for determining how much energy a solar panel can produce and, consequently, how much power your devices or appliances can draw from it. For example, a solar panel with a voltage of 20V and an amperage of 5A has a wattage of 100W. This means the panel can produce 100 watts of power under optimal conditions.

What is solar wattage?

Wattage, measured in watts (W), is the product of voltage and amperage ($W = V \times A$). It represents the total power output of a solar panel. Understanding wattage is essential for determining how much energy a solar panel can produce and, consequently, how much power your devices or appliances can draw from it.

How much solar power do I Need?

If you have no plans to use a large solar panel or battery, 10 amps will be sufficient. So if you only go hiking for a few hours during summer and travel light, a 100W solar panel, the Renogy Wanderer 10A charge controller and a small battery is enough.

How many watts a solar panel to charge a 12V battery?

You need around 400-550 watts of solar panels to charge most of the 12V lithium (LiFePO4) batteries from 100% depth of discharge in 6 peak sun hours with an MPPT charge controller. What Size Solar Panel To Charge 24v Battery?

.

How many amps does a 100W solar panel produce?



A 100W solar panel produces about 3.5 amps under ideal conditions. How Many Amps Can a 200W Solar Panel Produce?

A 200W solar panel can produce 6.89 amps for every peak sun hour. How Many Amps Does a 300W Solar Panel Produce?

.

How many watts of solar panels do I Need?

You need around 800-1000 watts of solar panels to charge most of the 48V lead-acid batteries from 50% depth of discharge in 6 peak sun hours with an MPPT charge controller. You need around 1600-2000 watts of solar panels to charge most of the 48V lithium batteries from 100% depth of discharge in 6 peak sun hours with an MPPT charge controller.



How many watts of 18V solar power can reach 10A



The Complete Off Grid Solar System Sizing Calculator

Using your daily energy usage and Peak Sun Hours, and assuming a system efficiency of 70%, the calculator estimates the Wattage required for ...

How many amps does 18v10w solar charger have , NenPower

An 18V 10W solar charger can efficiently handle the power requirements of various gadgets, such as smartwatches and GPS devices. The usability of these devices in off-grid ...



Solar Panel Amps Calculator

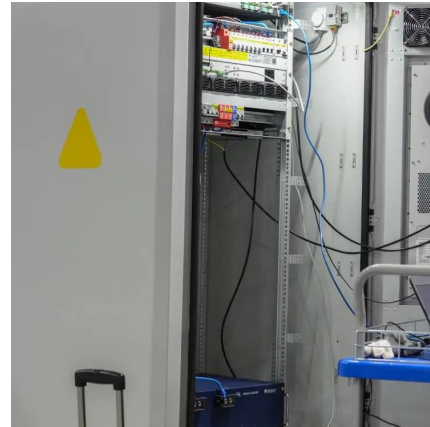
To calculate solar panel amperage, identify their rated power output in watts, which serves as a comparison of their electricity-generating potential. The panel's operating ...

[Wire Gauge Wattage Charts For AWG Wires \(4/0 ...](#)

How many watts can a wire handle? This is quite easy to calculate, and we will explain how you



can do it. On top of that, we include wire gauge wattage ...



Solar Panel Amps Calculator (Watts to Amps) - Dot Watts®

We usually measure or convert the watts into amps of solar panels to figure out how much current (amps) is being stored in the battery. Or we measure the amperage of the solar ...

Solar Panel Amps Calculator

To calculate solar panel amperage, identify their rated power output in watts, which serves as a comparison of their electricity-generating ...



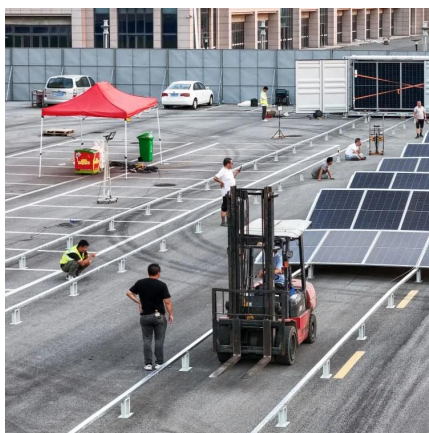
Solar Panel Ratings Explained - Wattage, Current, ...

However, since the power output is directly linked to Solar Irradiance (W/m^2), which changes with the time of day, weather, and location, ...



How to Reduce Solar Panel Voltage

Before we embark on how you can reduce your solar panel's voltage, we have to know how much voltage your average solar panel produces. Then how to properly test how much voltage your ...



What Size Charge Controller Do I Need? - BougeRV ...

A 30-amp charge controller can handle up to 360 watts of solar panel output for a 12-volt system and up to 720 watts for a 24-volt system. It's ...

[Battery Amp hours To Watts \(Ah to Watts\) Calculator](#)

How many watt-hours in a car battery 12v 100Ah car battery has 1200 watt-hours (Wh). How many watts are in 12 volts To calculate how many ...



[What battery should I use for Solar kit?](#)

I have purchased a 300W solar panel with a 18v rating and alongside I have a 3000W power inverter and 10-50Ah Solar converter. What I would like to know is what is the ...



Solar Panel Amps Calculator

The Current at Maximum Power (I_{mp}) refers to the amount of current a solar panel produces when it's operating at its maximum power output.



[Lithium \(LiFePO4\) Battery Runtime Calculator](#)

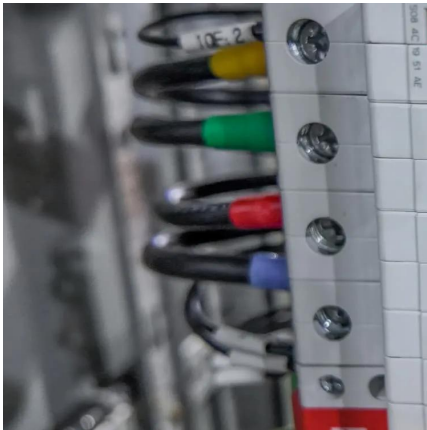
How many hours does a lithium battery last? Calculating how many hours your battery will last while running a load is not an easy task. There are so many factors to consider ...



[400W Solar Panel Kit \(DIY\): What Size Battery, ...](#)

In this guide, you'll learn, how many batteries, What size charge controller, what size inverter & what size cable you'll need for a 400-watt solar ...





Solar Panel Size Calculator

Result: You need about 120 watt solar panel to fully charge a 12v 50ah lithium (LiFePO4) battery from 100% depth of discharge in 6 peak sun ...

Solar Panel Size Calculator

Result: You need about 120 watt solar panel to fully charge a 12v 50ah lithium (LiFePO4) battery from 100% depth of discharge in 6 peak sun hours. Read the below post to ...



How many A is a 10w18v solar panel

A 10W18V solar panel can charge batteries that power lights or recharge devices. This utility is essential for ease of living and has allowed off-grid communities to maintain a ...

All You Need to Know about Amps, Watts, and Volts in Solar

Understand Amps, Watts, and Volts in Solar energy systems with our comprehensive guide. Learn how these key electrical units impact solar power efficiency and performance.



How many watts is solar energy 10a

1. Solar energy rated at 10A corresponds to a power output of 120 watts, calculated using the formula $P = V \times I$, where P is power in watts, V is ...



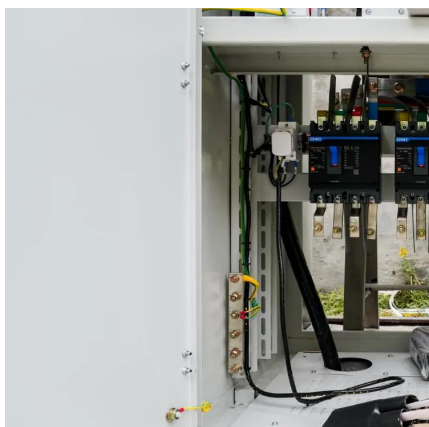
[Solar Panel Series & Parallel Calculator](#)

Use our solar panel series and parallel calculator to easily find which common wiring configuration maximizes the power output of your solar ...



[How to calculate your solar power requirements](#)

Solar Panels power generation is commonly given in Watts e.g. 120 Watts. To calculate the energy it can supply the battery with, divide the ...





Solar Panel Output Calculator , Get Maximum Power ...

Use Solar Panel Output Calculator to find out the total output, production, or power generation from your solar panels per day, month, or in ...



Solar Basics: Voltage, Amperage & Wattage , The Solar Addict

Learn how voltage, amperage, and wattage work in solar panels with our clear and easy-to-understand guide.

The Complete Off Grid Solar System Sizing Calculator

Using your daily energy usage and Peak Sun Hours, and assuming a system efficiency of 70%, the calculator estimates the Wattage required for your off-grid solar system's ...



How Many Watts Can a 10A Charge Controller Handle?

A 10A charge controller can handle 130 to 150 watts of solar power. 12V system often use 20A charge controllers, but if it is less than 150 watts, a 10A controller is enough.



Solar Panel Series & Parallel Calculator

Use our solar panel series and parallel calculator to easily find the wiring configuration that maximizes the power output of your solar panels.



Solar Panel Series & Parallel Calculator

Use our solar panel series and parallel calculator to easily find which common wiring configuration maximizes the power output of your solar panels.
1. Find the technical ...

Contact Us

For catalog requests, pricing, or partnerships, please visit:
<https://www.talbert.co.za>