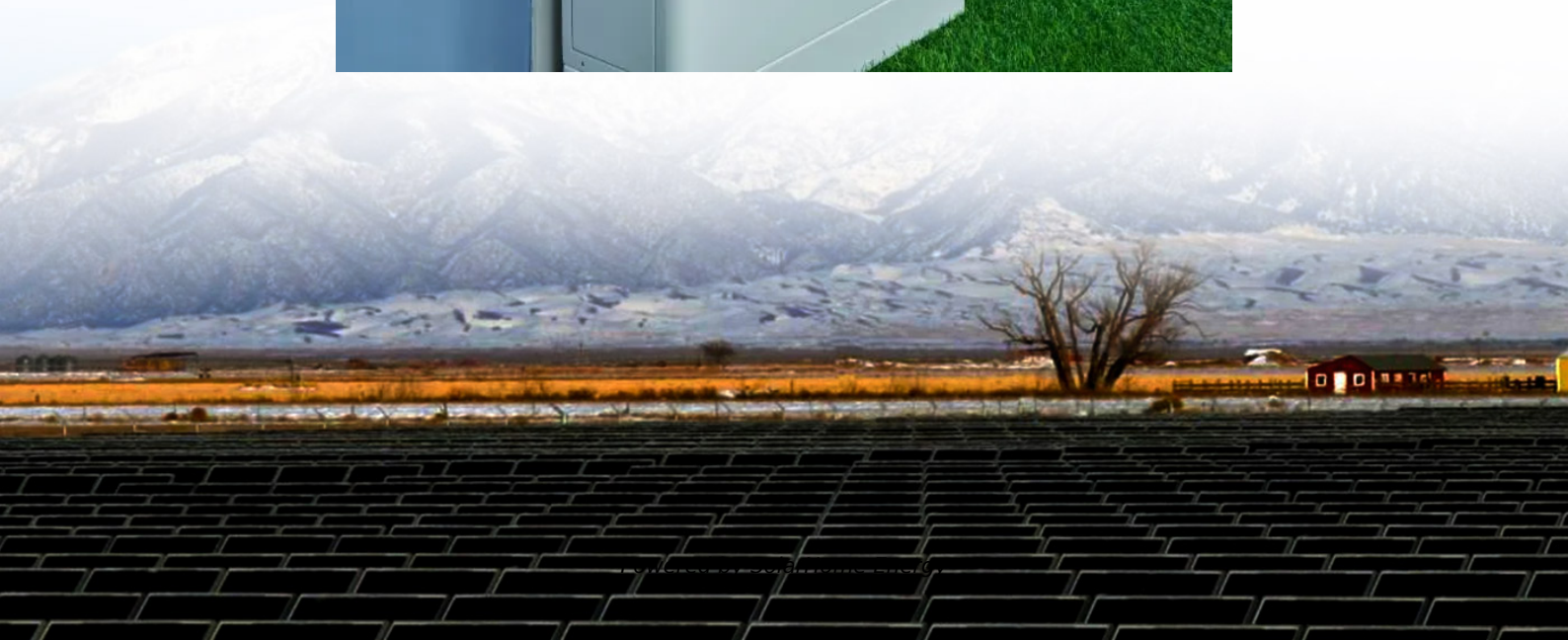


How many watts is suitable for a 12V inverter for home use





Overview

Before we go any further, we highly recommend that you choose a pure sine wave inverter. This type of inverter delivers high-quality electricity, similar to your utility company.

We have summarized the appliances that inverters from 300W to 3000W can run depending on their rated maximum power. Note to our readers: Use the above formula to determine.

In general, a 3000W to 5000W inverter works well for most homes, but the exact size depends on factors like household appliances, total power consumption, and battery setup. In this guide, we'll explain how to calculate the right inverter size for home backup power and even for solar power systems. How much wattage does an inverter need?

Check the nameplate on the appliance to determine the actual wattage required. * Appliances and tools with induction motors (marked * in tables) may require from 3 to 7 times the listed wattage when starting. The start-up load of the appliance or tool determines whether an inverter has the capability to power it.

How do I select an inverter that has enough power?

To select an inverter from DonRowe.com that has enough power for your application, add the watts for items you may want to run at the same time. Use the total wattage, plus 20%, as your minimum power requirement. Note: The wattage's given below are estimates. The actual wattage required for your appliances may differ from those listed.

How do I choose the right inverter size?

Here is our last bit of advice on how to select the correct inverter size: Check our inverter size chart. List all your appliances in the function of their power output. Apply our inverter size formula. Do not exceed 85% of your inverter's maximum power continuously. Oversize your inverter for extra appliances in the future.

What are the different solar inverter sizes?



Solar generators range in size from small generators for short camping trips to large off-grid power systems for a boat or house. Consequently, inverter sizes vary greatly. During our research, we discovered that most inverters range in size from 300 watts up to over 3000 watts. In this article, we guide you through the different inverter sizes.

What is the best inverter size for a 3 bedroom house?

A pure sine wave inverter with at least 1000W is recommended. Q2: What is the best inverter size for a 3-bedroom house?

A: It depends on the appliances you plan to run. For basic lighting, fans, and a TV, a 1000-1500W inverter is usually sufficient. If running an AC or fridge, consider 2000W or more.

How much power does a 595w inverter need?

Determine Your Power Requirements To find the right inverter power, calculate the total wattage of all the appliances you want to run during an outage. Tip: Always add 20-25% as a safety margin. So, $595W \times 1.25 =$ approx. 750W inverter needed.



How many watts is suitable for a 12V inverter for home use



[How much power does an inverter draw?](#)

Documented in this article are common questions relating to the inverter draw (inverter amp draw or inverter current draw) for 12v (or 24v) batteries. If you're looking for information relating to ...

How Many Batteries For A 1000 Watt Inverter?? + Diagrams

Discover the factors to consider when determining how many batteries you need for a 1,000W inverter, including battery capacity, voltage, and load requirements.



What Size Inverter Do I Need?

Whether you're looking for what size inverter is best for your house or something as simple as an inverter for power your TV, the proper size will be a ...

[What 12V Lithium Batteries Can Power 3000W ...](#)

What are the power requirements for a 3000W inverter? A 3000W inverter requires a significant



amount of power to operate efficiently. The ...

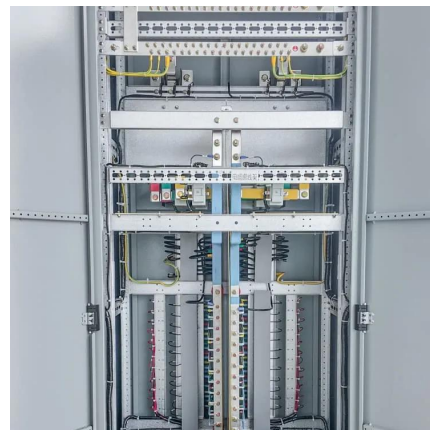


[Top 10 Power Inverters for Home: Reliable and ...](#)

The 3000 Watt Power Inverter by TOPBULL is a versatile and powerful device designed to convert 12V DC to 110V AC, making it suitable for ...

Inverter Size Calculator

Total Wattage (W): This is the total power consumption of all the appliances or devices you plan to run through the inverter. **Safety Factor:** A multiplier to ensure some buffer above your actual ...



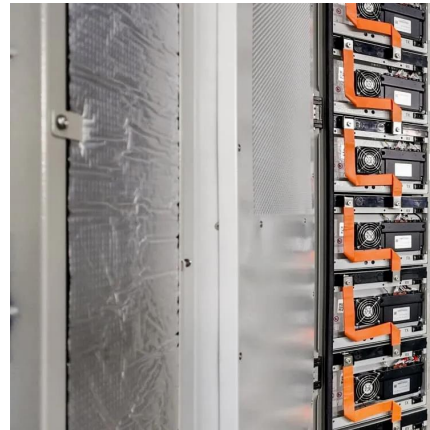
Power Inverter Calculator , Watt Calculator , Go Power!

Which power inverter is right for you? By answering these simple questions, we can recommend a product for you in just a few moments. This calculator helps us identify how much power your ...



MWXNE , How to Select the Right Power Inverter for Home Use

In this guide, we'll walk you through everything you need to know to select the right inverter for your home -- from calculating load requirements to understanding inverter ...



What Size Inverter Do I Need for a 200Ah Lithium Battery

For instance, a 12V 200Ah battery's usable energy is about 1920Wh, supporting continuous inverter loads up to roughly 1500-2000W. ...

[How do I choose a Power Inverter: Buyer's Guide](#)

I am completely happy with the two inverters that I currently use and they are 800 watts and a 400 watts. If you aren't sure how much power you'll need, you just need to find the stickers that are ...



[Can You Run a 3000W Inverter on a 100Ah Battery?](#)

The runtime of a 2000-watt inverter on a 12V battery is approximately 36 minutes when using a 12-volt, 100Ah battery. This ...



[The Only Inverter Size Chart You'll Ever Need](#)

We have created a comprehensive inverter size chart to help you select the correct inverter to power your appliances.

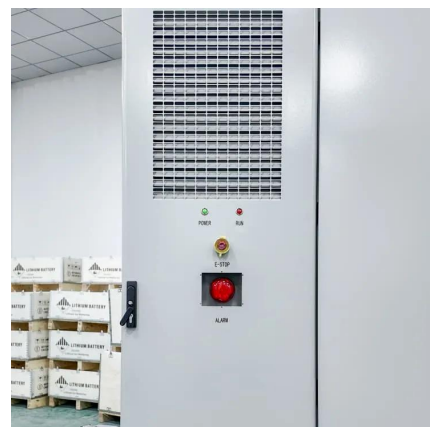


[What Inverter Size Do I Need to Run a Laptop?](#)

$100 + 20\% = 120$ So a 100 watt laptop needs 120 watts of inverter power to run. That is the minimum requirement though, and it won't hurt to use a larger inverter. If you add a modem ...

How To Select And Use Power Inverter For Home Backup

Pure sine wave inverter for home use (best inverter for home) On the other hand, pure sine wave power inverters are often preferred for many modern electronics.





What Inverter Size is Best for a 100Ah Battery?

Key Considerations for Choosing an Inverter 1. Battery Voltage First, check your battery's voltage. Most 100Ah batteries are 12V, but some systems may use 24V. Your inverter must match your ...

Inverter Capacity for 150ah Battery Guide

The runtime depends on how many appliances you run at the same time. Use this guide to check how many watts your appliances are. But for a 150ah battery, you will only use a limited ...



MWXNE , How to Select the Right Power Inverter for ...

In this guide, we'll walk you through everything you need to know to select the right inverter for your home -- from calculating load requirements ...



What Size Inverter Do You Need for Your Home? , Renogy US

To calculate or determine what size inverter can meet your energy requirements, you need to calculate the total power of all the appliances you want to run with the inverter. Here is how ...



How many batteries are needed for a 3000 watt inverter?

The number of batteries required for a 3000 watt inverter depends on the ampere per hour (AH) and rated voltage (V) of the battery you purchased, as well as the effective ...



What Size Power Inverter Is Needed for a House [Full Guide]

In general, a 3000W to 5000W inverter works well for most homes, but the exact size depends on factors like household appliances, total power consumption, and battery ...



What Size Inverter Do I Need?

Whether you're looking for what size inverter is best for your house or something as simple as an inverter for power your TV, the proper size will be a measurement based on the typical power ...





How Much Power Does An Inverter Draw With No Load?

How Many Amps Does a 2000 Watt Inverter Draw with No Load? Without any load connected to it, a 2000-watt inverter can draw approximately ...



[Usage Chart: How Many Watts Do You Need?](#)

Use the total wattage, plus 20%, as your minimum power requirement. Note: The wattage's given below are estimates. The actual wattage required for your appliances may differ from those ...

[How do I choose a Power Inverter: Buyer's Guide](#)

I am completely happy with the two inverters that I currently use and they are 800 watts and a 400 watts. If you aren't sure how much power you'll need, you just ...



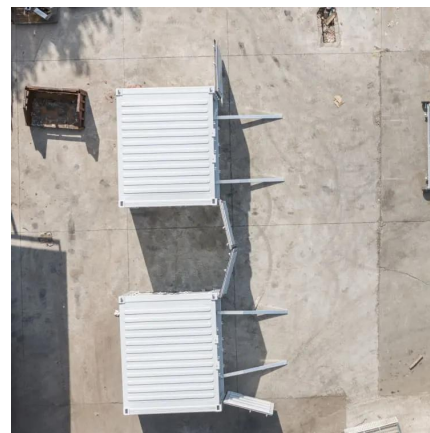
What Size Inverter Do I Need for a 100 Watt Solar Panel

Wondering what size inverter you need for a 100 watt solar panel? Here's how to find the right inverter and calculate its size.



How Many Watt Inverter Do I Need? , Click to Learn More

This article is the perfect guide to let you know how many watt inverter do I need. we will guide you with proper calculations.



What Size Power Inverter Is Needed for a House [Full ...

In general, a 3000W to 5000W inverter works well for most homes, but the exact size depends on factors like household appliances, total power ...

[12V 500 Watt Pure Sine Wave Inverter](#)

Pure sine wave inverter 12V to 240V for sale, output frequency 50Hz or 60Hz for selection, output AC 110V, 100V, 220V, 230V and 240V are optional. 500 watt ...





Contact Us

For catalog requests, pricing, or partnerships, please visit:
<https://www.talbert.co.za>