

How many watts does a solar panel produce per square meter





Overview

What is solar panel watts per square meter (W/M)?

Solar panel watts per square meter (W/m) measures the power output of a solar panel based on its size. Compare solar panels to see which generates most electricity per square meter. A higher W/m value means a solar panel produces more power from a given area. This can help you determine how many solar panels you need for your energy needs.

How much sunlight can a solar panel produce?

Usually, the typical amount can be 1,000 watts of sunlight per square meter of the panel. As we have mentioned before, average domestic solar panels hold a capacity ranging from 1,000 watts to 4,000 watts. Location is another factor that can have a big influence on power production.

What is watts per square meter?

Watts per square meter is a measurement that quantifies the power output of solar panels relative to their surface area. It indicates how much electricity a solar panel produces per space unit, allowing for comparisons between different panel types and sizes.

How much power does a solar panel generate a month?

So to get the monthly power output, you simply calculate the daily figure then multiply it by 30: The most common domestic solar panel system is 4 kW. And it has 16 panels, each of which is about 1.6 square meters (m²) in size. They are rated to generate approximately 265 watts (W) of power (in ideal conditions).

How much solar energy is received per square meter?

The amount of solar intensity received by the solar panels is measured in terms of square per meter. The sunlight received per square meter is termed solar irradiance. As per the recent measurements done by NASA, the average



intensity of solar energy that reaches the top atmosphere is about 1,360 watts per square meter.

What is a solar power per square meter calculator?

It also includes wiring, inverter, charge controller, and battery bank (if used). A solar power per square meter calculator takes details regarding these factors and then gives the accurate output generated by the solar panel per square meter. After this, it's time to learn about solar panel output calculators.



How many watts does a solar panel produce per square meter



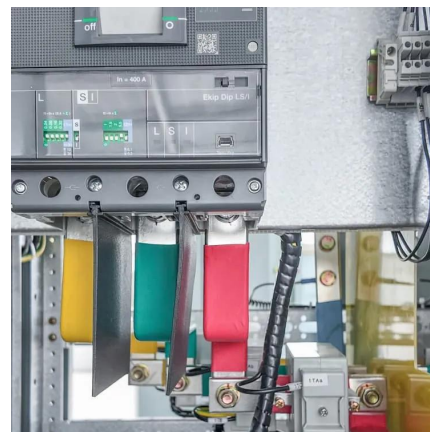
Solar Panel Output per Square Meter: Efficiency Factors & Future

...

Solar panels have become a cornerstone of renewable energy, but many wonder: How much power can a single square meter of solar panels actually produce? Let's break down the ...

How many watts per square meter is a solar panel?

The average power output of a solar panel is approximately 150 to 400 watts per square meter, depending on various factors including the ...



How to Understand Solar Panel Watts Per Square Meter

Watts per square meter is a metric used to measure the power output of solar panels relative to their surface area. It represents a solar panel's electricity per square meter ...

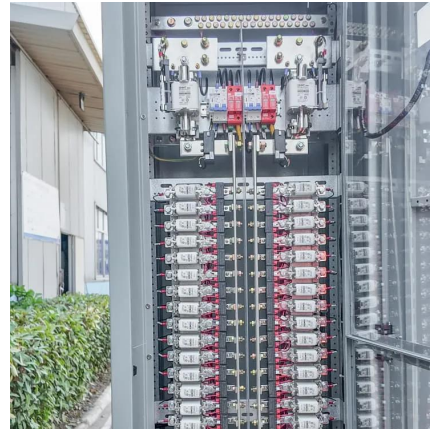


Solar Panels Watts per Square Meter

So, when we say "watts per square meter," we are essentially measuring how much power a solar panel can produce relative to its physical



size. This metric, watts per square ...



How much electricity can one square meter of solar panels ...

Therefore, approximately one square meter can generate around 150W-170W of electricity. What power factors will affect the power generation of solar panels?



How Much Energy Does a Solar Panel Produce?

How much energy does a home solar system generate? Will it be enough for my home? Learn more about solar panel efficiency and power output.



Solar Panel Output: How Much Power Do Solar ...

For example, a typical solar panel might have an output of 350 watts (W), which means that under ideal conditions, it can produce 350 watts of electricity per ...



Solar Panel Output per Square Meter: Efficiency ...

Solar panels have become a cornerstone of renewable energy, but many wonder: How much power can a single square meter of solar panels actually produce? ...



[What is the Average Solar panel Output Per day?](#)

After learning about how much energy does a solar panel produce per month, you should also discover how much solar energy per square meter per day is produced. The ...

Solar Rooftop Calculator: How Many Solar Panels Can

To help you adequately estimate the size of the solar system and the number of solar panels you can put on your roof, you can use the following Solar Rooftop Calculator. Further on, we have ...



[SOLAR POWER PER SQUARE METER CALCULATOR](#)

How many Watts Does a solar panel produce per square meter? The average solar panel has an input rate of roughly 1000 Watts per square meter, while the majority of solar panels on the ...



Solar Panel Efficiency: Watts Per Square Meter Explained

Currently, the average efficiency of commercially available solar panels ranges between 15% and 20%. This translates to about 150 to 200 watts per square meter of solar panel. The Frontier of ...



[Solar Panel Watts Per Square Meter Explained](#)

To measure this efficiency, use solar panel Watts per square meter (W/m). This metric shows how much power a solar panel produces per square meter of surface area under standard conditions.

[Solar Panels Watts per Square Meter](#)

So, when we say "watts per square meter," we are essentially measuring how much power a solar panel can produce relative to its physical ...



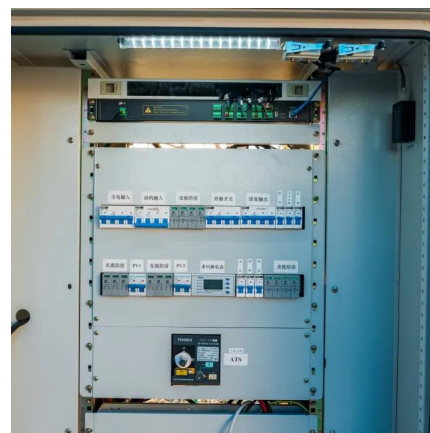


How Much Power (Watts) does a Solar Panel Produce?

Usually, the typical amount can be 1,000 watts of sunlight per square meter of the panel. As we have mentioned before, average domestic solar panels hold a capacity ranging from 1,000 ...

How Much Energy Can Solar Panels Generate?

The estimated output from solar energy systems under peak sunlight reaches between 150 to 220 watts per square meter. Factors Affecting Solar Panel ...



How Many kWh Does A Solar Panel Produce Per Day?

If we know both the solar panel size and peak sun hours at our location, we can calculate how many kilowatts does a solar panel produce per day using this equation: Daily kWh Production ...

How many watts per square meter are solar panels?

In a typical scenario, solar panels can produce between 150 and 300 watts per square meter. This variation is largely attributed to several ...



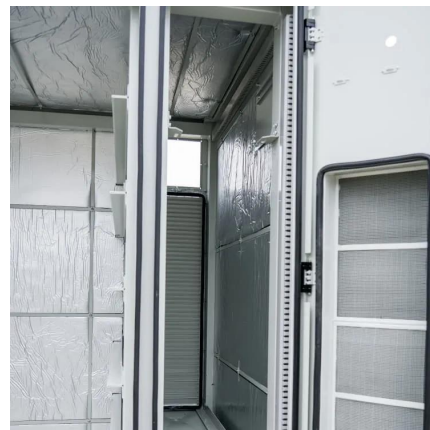
Solar Panel Output: How Much Power Does a Solar ...

On average, solar panels designed for domestic use produce 250-400 watts, enough to power a household appliance like a refrigerator for an ...



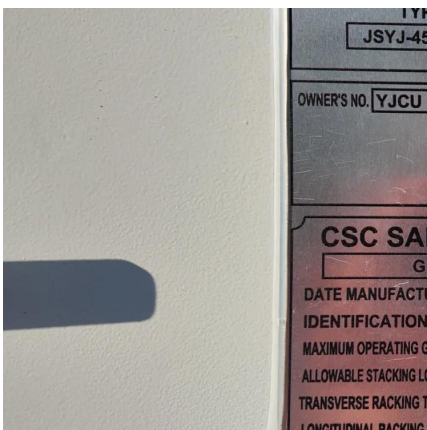
How Much Power (Watts) does a Solar Panel Produce?

Watts per square meter (W/m^2) is the power density of sunlight falling on a given area of solar panels. In the context of solar panels, it refers ...



Solar Panel Output Calculator UK 2025 , The Eco ...

Use our free online solar panel output calculator to see how much electricity you could produce each year with a solar panel system.





[Solar Power per Square Meter Calculator](#)

As per the recent measurements done by NASA, the average intensity of solar energy that reaches the top atmosphere is about 1,360 watts ...

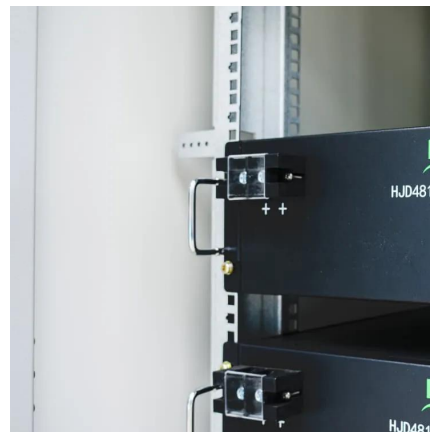


Watts Per Square Meter Solar Panel - The Go-to Guide

Watts per square meter (W/m^2) is the power density of sunlight falling on a given area of solar panels. In the context of solar panels, it refers to the amount of electrical power a ...

How to Understand Solar Panel Watts Per Square Meter

Watts per square meter is a metric used to measure the power output of solar panels relative to their surface area. It represents a solar ...



[Standard Solar Panel Sizes And Wattages \(100W ...](#)

The average solar panel output per area is 17.25 watts per square foot. Let's say that you have 500 square feet of roof available for solar panel installation.



Solar Panel Output Explained

This includes a cell temperature of 25° Celsius, solar irradiance of 1,000 watts per square meter, and air mass ...



How much energy do solar panels produce for your ...

Most residential solar panels on today's market are rated to produce between 250 and 400 watts each per hour. Domestic solar panel systems typically have a ...

Basic Solar Energy Math , Solar Power for Ordinary People

Solar Irradiance and Solar Constant Solar irradiance is the amount of sunshine incident on a unit area and is typically expressed in watts per square meter (W/m^2) or ...



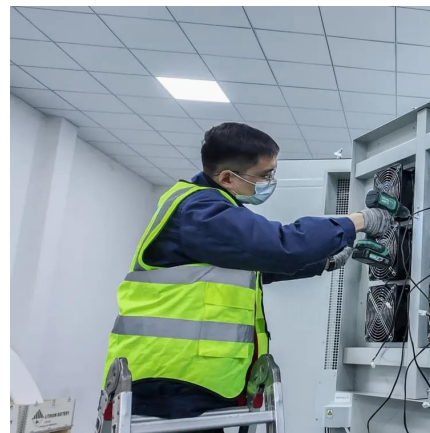


How many watts per square meter is a solar panel? , NenPower

The average power output of a solar panel is approximately 150 to 400 watts per square meter, depending on various factors including the technology used and the angle of ...

How much electricity can one square meter of solar ...

Therefore, approximately one square meter can generate around 150W-170W of electricity. What power factors will affect the power generation ...



[Solar Power per Square Meter Calculator](#)

As per the recent measurements done by NASA, the average intensity of solar energy that reaches the top atmosphere is about 1,360 watts per square meter. You can ...

Contact Us

For catalog requests, pricing, or partnerships, please visit:
<https://www.talbert.co.za>