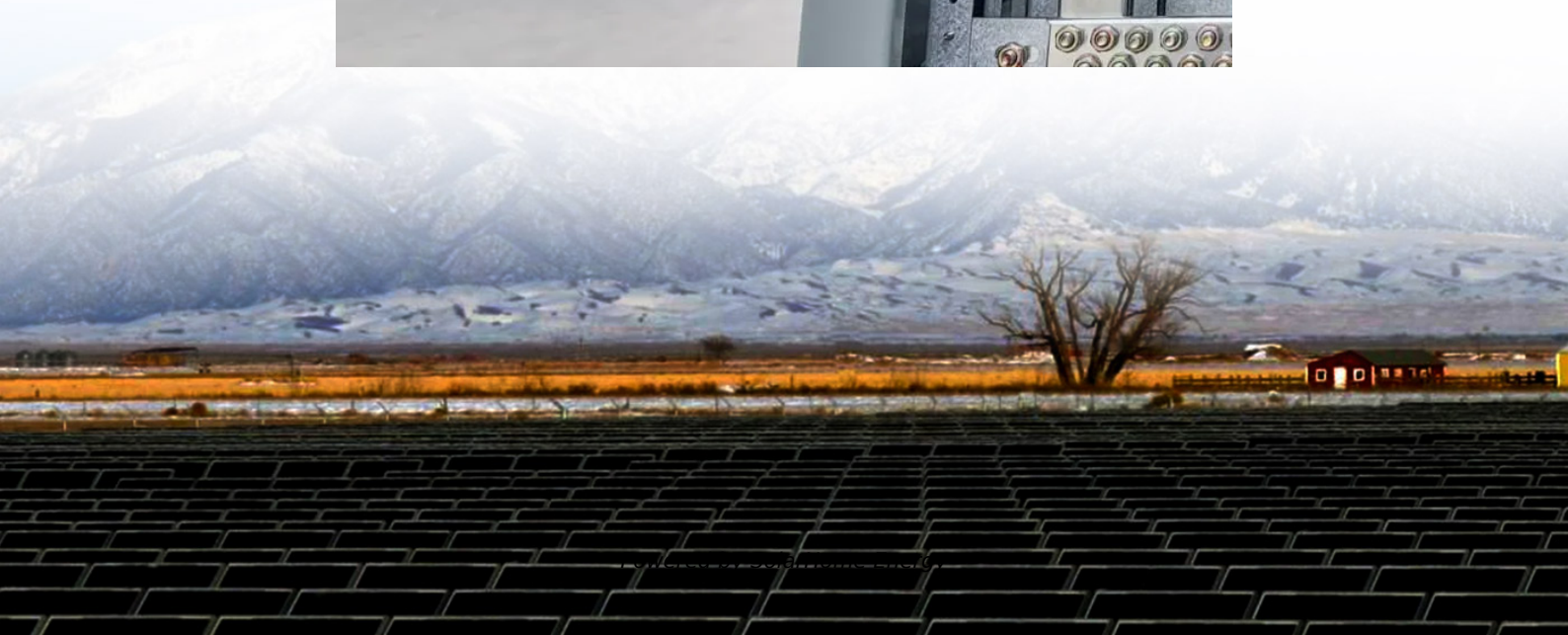


How many watts does a photovoltaic inverter generate





Overview

In typical residential installations, inverters are generally rated between 1,000 watts to 7,000 watts, catering to average household energy consumption requirements. For commercial applications, the figures often increase with inverters in the range of 10,000 to 100,000 watts. How many watts a solar inverter do I Need?

A 200 watt portable unit such as the NDDI Direct Power Inverter will be sufficient for that. If you are going to run an air conditioner or a refrigerator in your RV, a more powerful inverter and battery are required. Ready to size your solar system the smart way?

.

How to size a solar inverter?

The right way to size an inverter is to check the wattage. The inverter wattage must be the same or greater than your solar panel's watts. Here is a chart that shows the watts consumption of various appliances and what inverter size you will need. Note that this guide includes a 20% safety margin for the inverter watts.

Do you need a solar inverter?

The inverter is one of the most important components of a home or portable solar power system. Solar panels produce DC electricity, but you need an inverter to convert DC power into 120/220 volt AC electricity. Only after conversion can home appliances and other devices use it.

Is a 3000 watt inverter enough?

If your devices require 400 watts and you have 300 continuous / 200 surge inverter, it is not enough. A 3000 watt inverter usually has 6000W surge power, or double the running watts. Most of the attention in solar power is focused on solar panels, but do not neglect the inverter.



How much power do you need for an RV inverter?

If you only need to charge your phone and a light bulb, that is only 150 watts combined. A 200 watt portable unit such as the NDDI Direct Power Inverter will be sufficient for that. If you are going to run an air conditioner or a refrigerator in your RV, a more powerful inverter and battery are required.

What voltage do I need for a portable solar panel?

For portable solar panels in the 100 watt range, 12V, 24V or 48V will be fine. If you have a more powerful inverter, higher voltage is required. This information will be provided in the inverter, and this will prove useful if you want to connect it direct to a solar panel.



How many watts does a photovoltaic inverter generate

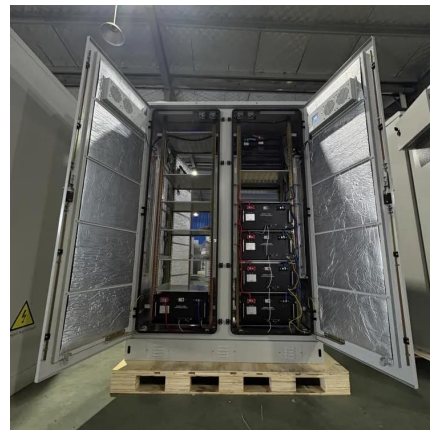


How Many Solar Panels Do I Need For a 6000 Watt ...

Inverters are not 100% efficient, so consider the inverter efficiency when sizing your solar array. A 6000W inverter might have an efficiency of ...

How Many Solar Panels Do I Need For a 6000 Watt Inverter

Inverters are not 100% efficient, so consider the inverter efficiency when sizing your solar array. A 6000W inverter might have an efficiency of around 95%. Divide the total daily ...



How Much Power Does a Solar Inverter Use: An ...

Solar inverters can consume up to 40 watts of power even when not in use, impacting the overall energy output of your solar system. Inverter ...

What Size Inverter Needed for Solar Panels?

The size of the inverter will be determined by the watts of your solar panels. A general rule of



thumb is that you will need a 1,000 watt (1kW) ...



[How Much Power Does a 15kW Solar System Produce?](#)

The article discusses the details of a 15kW solar power system, including its power generation, space requirements, and cost. It explains that a 15kW ...

Solar Panel Wattage Explained: How Many Watts Do ...

Confused about solar panel wattage? Learn how many watts you need, how solar output works, and how to calculate the right solar setup for ...



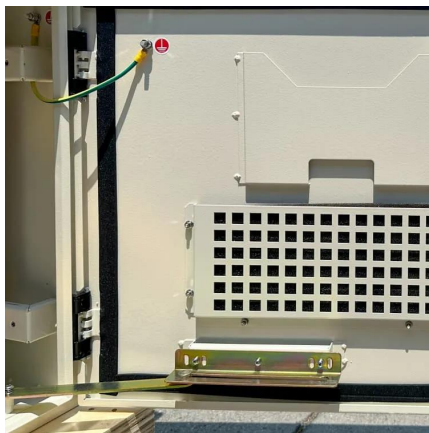
[How Much Does a 12kW Solar System Produce - ...](#)

A 12kW solar system can power your home efficiently. Learn how to calculate power output, estimate panel needs, and save on electricity with ...



59 Solar PV Power Calculations With Examples Provided

Learn the 59 essential solar calculations and examples for PV design, from system sizing to performance analysis. Empower your solar planning or ...



How Much Power Does A 5kW Solar System Produce Per Day, ...

The key question here is how much power does a 5kW solar system produce per day, per month, and per year as in '5kw solar panel how many units per day?'. We will teach you how you can ...

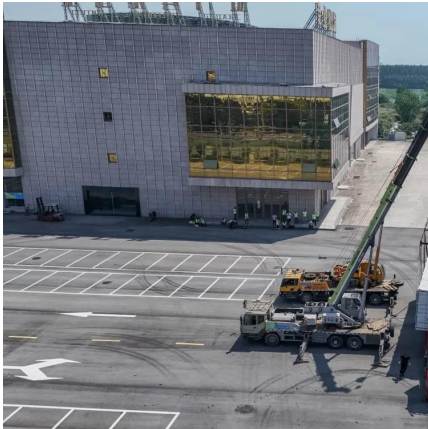
What Inverter Size Do I Need to Run a Coffee Maker?

The basic formula is simple, but determining how many watts a coffee maker uses per hour is a little tricky because it does not run continuously. To get the right inverter size, use this simple ...



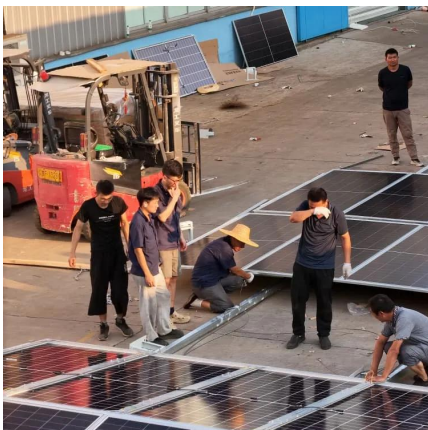
50 watt Solar Panel: The Ultimate Guide (What Can It Power?)

How Much Power Does a 50-watt Solar Panel Produce? In the real world, on average, a 50-watt solar panel will produce about 200 watts of DC power output or 16 amps @ ...



Solar Inverter Size Chart

A 3000 watt inverter provides 3000 watts of continuous nonstop power. As long as your devices don't exceed 300 watts, the inverter will have no problem running them at the same time.



I have 32 400w panels. What would be the average ...

Discussion of solar photovoltaic systems, modules, the solar energy business, solar power production, utility-scale, commercial rooftop, residential, off-grid ...

Solar Panel Wattage Calculator

The solar panel wattage calculator will help you find your recommended solar panel wattage requirement depending on your electricity ...





How Much Power Does Solar Inverter Use and How to Create the ...

Learn how much power a solar inverter uses and get practical tips on designing the ideal solar power project. From understanding inverter efficiency to system sizing, this ...

Solar Panel Wattage Calculator - Calculate Solar ...

A solar panel wattage calculator can help optimize your solar power system for maximum efficiency and cost-effectiveness. This calculator considers ...

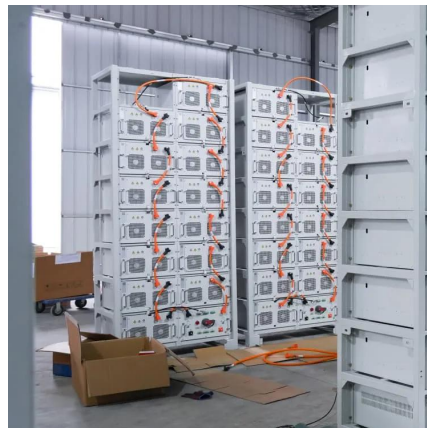


[Standard Solar Panel Sizes And Wattages \(100W ...](#)

How many watts per square foot can a solar panel generate? Dividing the specified wattage by the square footage of the solar panel will give us just this ...

[What Inverter Size Do I Need to Run a Kettle?](#)

But if you use solar power every watt counts, so what inverter size do you need to run a kettle every day? Because inverters are not 100% efficient, you need a 1000 watt inverter to run an ...



How Many Solar Panels Do I Need To Power a House ...

If we use 400W, that would mean you need 13 solar panels. System size (5,200 Watts) / Panel power rating (400 Watts) = 13 panels Of course, the easiest ...



How Much Power Does a Solar Inverter Use: An Overview

Solar inverters can consume up to 40 watts of power even when not in use, impacting the overall energy output of your solar system. Inverter efficiency, size, and ...



[What Size Inverter Needed for Solar Panels?](#)

The size of the inverter will be determined by the watts of your solar panels. A general rule of thumb is that you will need a 1,000 watt (1kW) inverter for every 1 kilowatt (kW) ...



PVWatts Calculator

Estimates the energy production and cost of energy of grid-connected photovoltaic (PV) energy systems throughout the world. It allows homeowners, small building owners, installers and ...



How To Size an Inverter: Solar Inverter Sizing Explained

Optimize your inverter size for maximum efficiency and safety - find out how to size it correctly to avoid potential issues.

[How Much Power Does a Solar Inverter Need](#)

Solar inverter or photovoltaic inverter is a power inverter that can easily convert direct current to AC. Returning to the solar inverter power needs, it is around 10-25 W, and its ...



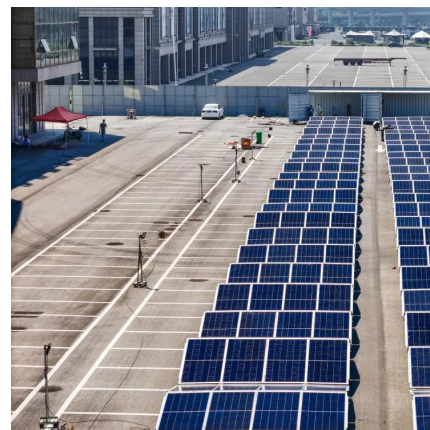
[How Much Power Does a Solar Inverter Need](#)

Solar inverter or photovoltaic inverter is a power inverter that can easily convert direct current to AC. Returning to the solar inverter power ...



How many watts does a solar inverter have? , NenPower

In typical residential installations, inverters are generally rated between 1,000 watts to 7,000 watts, catering to average household energy ...



The Only Inverter Size Chart You'll Ever Need

A 3000 watt inverter provides 3000 watts of continuous nonstop power. As long as your devices don't exceed 300 watts, the inverter will have no problem running them at the same time.

How many watts does a solar inverter have? , NenPower

In typical residential installations, inverters are generally rated between 1,000 watts to 7,000 watts, catering to average household energy consumption requirements. For ...



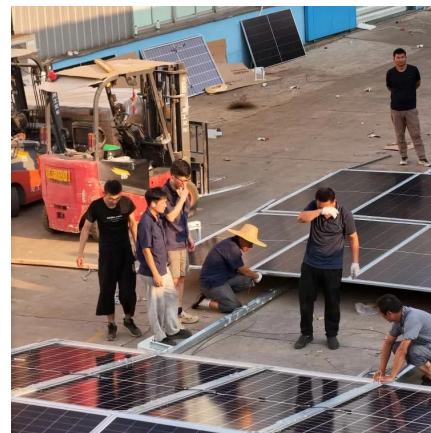


How Many Solar Panels Do I Need For a 6000 Watt ...

As the world moves towards a greener and more sustainable future, harnessing solar energy has become an attractive option for both ...

The Only Inverter Size Chart You'll Ever Need

During our research, we discovered that most inverters range in size from 300 watts up to over 3000 watts. In this article, we guide you through the different inverter sizes. ...



Solar Panel Wattage Explained: How Many Watts Do You Need?

Confused about solar panel wattage? Learn how many watts you need, how solar output works, and how to calculate the right solar setup for your home, RV, or cabin.

Contact Us

For catalog requests, pricing, or partnerships, please visit:
<https://www.talbert.co.za>