

How many watts does a one meter by one meter solar panel hold





Overview

In general, a standard 1m² solar panel will produce between 250 and 400 watts of power. However, this can vary based on the specific panel you choose, as well as the other factors mentioned above. How much power does a solar panel use?

Solar panel power ratings range from 250W to 450W. Based on solar.com sales data, 400W is the most popular power rating and provides a great balance of output and Price Per Watt (PPW). If you have limited roof space, you may consider a higher power rating to use fewer panels. If you want to spend less per panel, you may consider a lower wattage.

What is solar wattage?

Wattage refers to the amount of electrical power a solar panel can produce under standard test conditions (STC), which simulate a bright sunny day with optimal solar irradiance (1,000 W/m²), a cell temperature of 25°C, and clean panels. In simpler terms, a panel's wattage rating tells you its maximum power output under ideal conditions.

How to calculate solar panel wattage?

Also Check: – Hand Drying Footprint Calculator Calculating solar panel wattage involves a series of methodical steps: Determine the panel specifications: Locate the V_{mp} and I_{mp} values, which are typically provided on the panel's datasheet. Apply the formula: Multiply V_{mp} by I_{mp} to derive the maximum power output in watts.

How much power does a 1m² solar panel produce?

In general, a standard 1m² solar panel will produce between 250 and 400 watts of power. However, this can vary based on the specific panel you choose, as well as the other factors mentioned above. When considering the power output of a solar panel, it's important to understand that this is a maximum potential output.



How large are solar panels?

But even today there is no definite answer for how large solar panels are, because the answer varies. The same goes for their wattages because not each system works on the same power. We know you have lots of queries regarding solar panel sizes and wattage, so let us discover their answers.

How much energy does a 100 watt solar panel produce?

The daily energy production of a 100-watt solar panel is influenced by the amount of sunlight it receives. On average, you can expect: Assuming 5 peak sun hours: $100\text{W} \times 5 \text{ hours} = 500 \text{ watt-hours (0.5 kWh)}$ per day. In optimal conditions: The panel may produce up to 600-700 watt-hours (0.6-0.7 kWh) daily.



How many watts does a one meter by one meter solar panel hold



[Solar Panel Sizes and Wattage Explained](#)

Over 179 (GW) of solar capacity is installed nationwide and it's capable of powering roughly 33 million homes. While it takes roughly 17 (400-watt) panels to power a home.

Solar Panel Wattage Calculator

This solar panel wattage calculator allows you to calculate the recommended solar panel wattage according to the energy consumption of your household appliances. If you want ...



How Many Solar Panels Do I Need To Power a House in 2025?

Solar panel power ratings range from 250W to 450W. Based on solar sales data, 400W is the most popular power rating and provides a great balance of output and Price Per Watt (PPW).

Solar Panel Wattage Explained: How Many Watts Do You Need?

Confused about solar panel wattage? Learn how many watts you need, how solar output works,



and how to calculate the right solar setup for your home, RV, or cabin.



How many watts is 1m of photovoltaic solar energy , NenPower

The energy output of 1 meter of photovoltaic solar panel is typically between 150 to 300 watts, influenced by factors such as efficiency, sunlight exposure, and panel technology.



[Understanding Electric Meters for Solar Panels](#)

Discover the importance of electric meters in solar systems, from utility meters to PV meters, and how they help monitor and optimize your solar investment.



How Many Solar Panels Do I Need?

1 day ago · This is your starting point to calculate how many panels you need. Step 2: Understand Solar Panel Output Solar panels are rated in watts (W). Most residential panels today are ...





Solar Panel Wattage Explained: How Many Watts Do ...

Confused about solar panel wattage? Learn how many watts you need, how solar output works, and how to calculate the right solar setup for ...



[Standard Solar Panel Sizes And Wattages \(100W ...](#)

To bridge that gap of very useful knowledge needed, we have compared and averaged the sizes of 100-watt to 500-watt solar panels available on the ...

How many watts does a square meter of solar panel have?

1. Solar panels generate approximately 100 to 200 watts per square meter under optimal sunlight conditions, 2. Factors affecting solar panel output include angle, shading, and ...



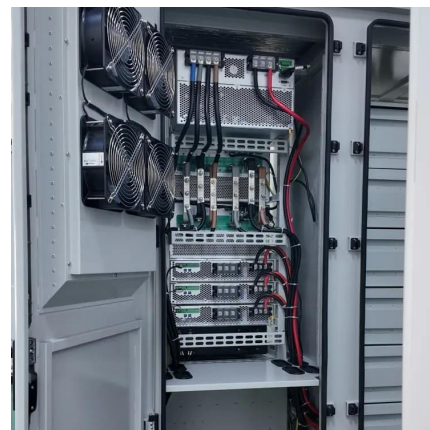
[How much power does a 1m2 solar panel produce?](#)

In general, a standard 1m2 solar panel will produce between 250 and 400 watts of power. However, this can vary based on the specific panel you choose, as well as the other ...



How Much Energy Does a Solar Panel Produce? , Solar

The electrical energy that is generated by a solar panel or a solar system can be expressed as watts or kilowatts. Kilowatt-hour (kWh) - A measure of electrical energy that is ...

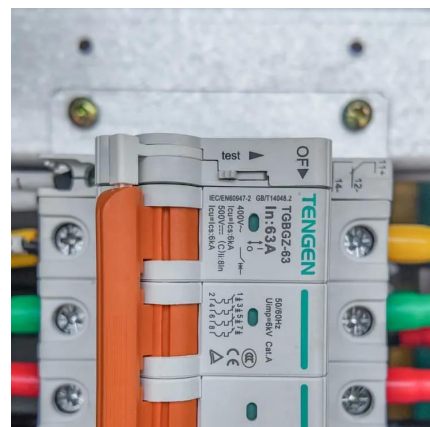


Solar Panel Calculator

The solar panel calculator can be used to figure out how many solar panels you need and determine the right system size and roof area requirements.

Solar Panel Wattage Calculator

This calculator considers variables such as panel efficiency, sunlight intensity, and environmental conditions, allowing for a more accurate prediction of the electricity a solar panel can generate.



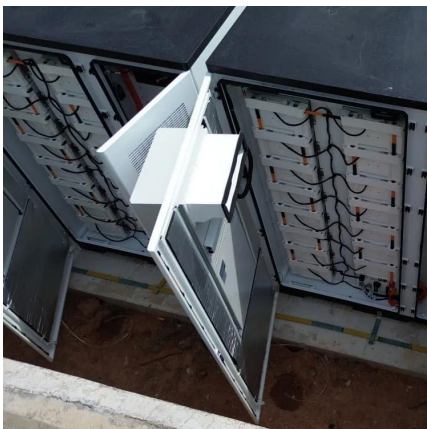


Solar Panels Sizes and Weights (All Sizes)

200-watt solar panels that are 10.56 kilograms and measure 1.64 meters long by 0.99 meters wide have an area of 1.63 square meters. They ...

How many watts is 1m of photovoltaic solar energy

The energy output of 1 meter of photovoltaic solar panel is typically between 150 to 300 watts, influenced by factors such as efficiency, sunlight ...



Solar Panels Wattage Calculated

The different outputs on a solar panel, such as 150W or 200W, can be entered, and the calculator will tell you how many solar panels you would need to give ...

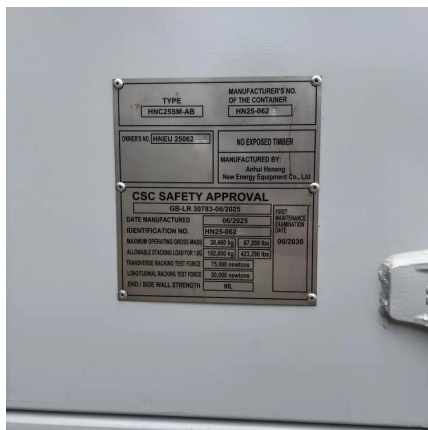
How much electricity can one square meter of solar ...

The method for calculating the power of a solar panel is as follows: length * width * solar cell conversion efficiency * 0.1=power (in centimeters). ...



[Solar Panel Calculator: How Many Do You Need?](#)

Solar panel sizes are measured in Watts (W), which is a rate of electrical flow. We'll use your energy use in Watt-hours to determine how many Watts of solar panels you ...



Solar Panel Wattage Calculator

This solar panel wattage calculator allows you to calculate the recommended solar panel wattage according to the energy consumption of ...



Solar Panel Calculator , Lowe's

Learn to calculate how many solar panels you need for your home with Lowe's. We've even included a solar panel calculator for quick work.





How Much Power Does a Solar Panel Produce , ESD , Solar Expert

Are you considering making your home energy-efficient by harnessing solar power? Understanding the capabilities of residential solar panels can help you make an informed ...



How Many Solar Panels Do I Need To Power a House ...

Solar panel power ratings range from 250W to 450W. Based on solar sales data, 400W is the most popular power rating and provides a great balance of ...

How many watts does a solar panel battery have per square meter?

The amount of watts a solar panel battery generates per square meter primarily depends on its solar panel efficiency and the solar irradiance of the location. 1. Typical solar ...



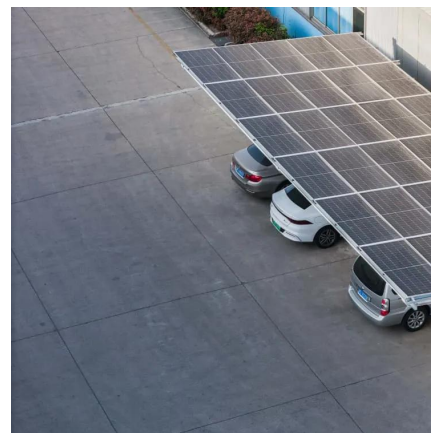
[Solar Panel Calculator: How Many Do You Need?](#)

Solar panel sizes are measured in Watts (W), which is a rate of electrical flow. We'll use your energy use in Watt-hours to determine how ...



Standard Solar Panel Sizes And Wattages (100W-500W ...

To bridge that gap of very useful knowledge needed, we have compared and averaged the sizes of 100-watt to 500-watt solar panels available on the market. The goal here is to get to the ...



[Solar Panel Dimensions Sizes and Wattage](#)

In terms of dimensions, a 300w monocrystalline or polycrystalline solar panel typically has a length of around 1.6 meters and a width of 1 meter. ...

Solar Panel Wattage Calculator

This calculator considers variables such as panel efficiency, sunlight intensity, and environmental conditions, allowing for a more accurate prediction of the ...





How many watts is a square meter of solar panel? , NenPower

1. The power output of a solar panel per square meter typically ranges from 150 to 200 watts, which can be influenced by various factors such as efficiency, orientation, and ...

HOW MANY SOLAR PANELS ARE NEEDED TO RUN A HOUSE?

With one 400-watt solar panel, we can harvest at least 1.8 kW of power each day. Imagine 10 panels. Imagine 50 panels. What does this translate to? It means that during the day, our ...



Solar Panel Sizes and Wattage Explained

Over 179 (GW) of solar capacity is installed nationwide and it's capable of powering roughly 33 million homes. While it takes roughly 17 (400 ...

Contact Us

For catalog requests, pricing, or partnerships, please visit:
<https://www.talbert.co.za>