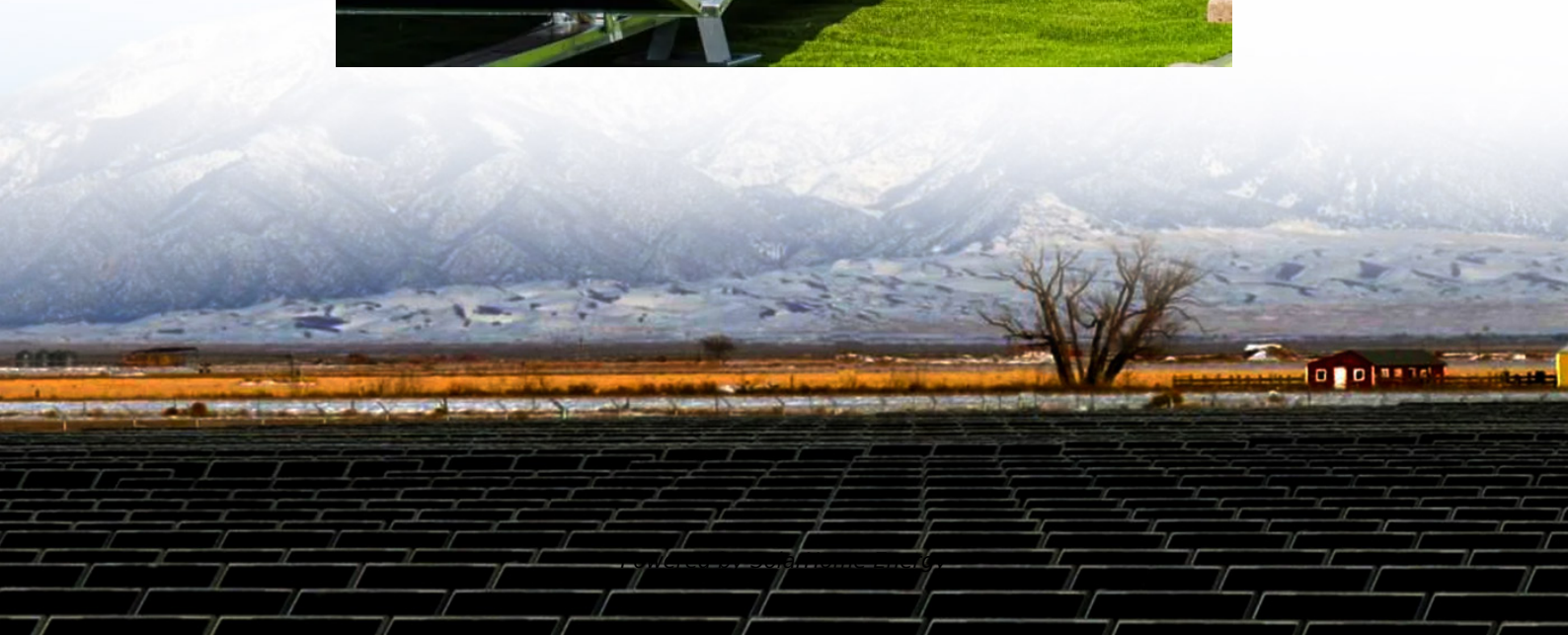


# **How many watts does a 48v 20a solar panel charge**





## Overview

---

Note: If you already have a solar panel and want to know how long it will take to charge your battery, use our solar battery charge time calculator.

1. Enter battery Capacity in amp-hours (Ah): For a 100ah battery, enter 100. If the battery capacity is mentioned in watt-hours (Wh), divide Wh by the battery's voltage (v). 2. Enter battery.

Follow these 6 steps to calculate the estimated required solar panel size to recharge your battery in desired time frame.

Here's a chart about what size solar panel you need to charge different capacity 24v lead-acid & Lithium (LiFePO4) batteries in 6 peak sun hours using an MPPT charge controller.

Here's a chart about what size solar panel you need to charge different capacity 12v lead-acid and Lithium (LiFePO4) batteries in 6 peak sun hours using an MPPT charge controller.

You need around 800-1000 watts of solar panels to charge most of the 48V lead-acid batteries from 50% depth of discharge in 6 peak sun hours with an MPPT charge controller. How many watts a solar panel to charge a 24v battery?

You need around 600-900 watts of solar panels to charge most of the 24V lithium (LiFePO4) batteries from 100% depth of discharge in 6 peak sun hours with an MPPT charge controller. Full article: [What Size Solar Panel To Charge 24v Battery?](#)

What Size Solar Panel To Charge 48V Battery?

.

Can a solar panel charge a 48v battery?

12V and 24V solar panel systems are still the most commonly used, but 48V batteries are becoming prevalent. If you want to buy a 48V battery, you have to use the right solar panel sizes and voltage to get the best charging time.



Three 350 watt solar panels connected in a series can charge a 48V 100ah battery in a day.

How many watts a solar panel to charge a lithium battery?

You need around 1600-2000 watts of solar panels to charge most of the 48V lithium batteries from 100% depth of discharge in 6 peak sun hours with an MPPT charge controller. What Size Solar Panel To Charge 120Ah Battery?

.

How many watts of solar panels do I Need?

You need around 800-1000 watts of solar panels to charge most of the 48V lead-acid batteries from 50% depth of discharge in 6 peak sun hours with an MPPT charge controller. You need around 1600-2000 watts of solar panels to charge most of the 48V lithium batteries from 100% depth of discharge in 6 peak sun hours with an MPPT charge controller.

How many watts do I need to charge a 12V 20Ah battery?

You need around 40 watts of solar panels to charge a 12V 20ah lead-acid battery from 50% depth of discharge in 4 peak sun hours with an MPPT charge controller. You need around 70 watts of solar panels to charge a 12V 20ah Lithium (LiFePO4) battery from 100% depth of discharge in 4 peak sun hours with an MPPT charge controller.

How many solar panels do I need to charge a 50Ah battery?

You need around 180 watts of solar panels to charge a 12V 50ah Lithium (LiFePO4) battery from 100% depth of discharge in 4 peak sun hours with an MPPT charge controller. Related Post: [How Long Will A 50Ah Battery Last?](#)



## How many watts does a 48v 20a solar panel charge

---



### What Solar Panel Size Do I Need to Charge a 48V Battery?

A 100ah 48V battery holds 4800 watts, so you need solar panels that can produce at least that amount. 3 x 350W solar panels can charge the battery in 5 hours. Assuming each panel ...

### MPPT charge controller calculator: Find the right solar charge

To select a charge controller, you'll need to calculate the maximum amount of current (in Amps) that the MPPT should be able to output. This max output current value is ...



### [How many Watts can a 30-amp Charge Controller ...](#)

A 30 amp charge controller has a power capacity of 360 watts for a 12V panel, 720 watts for 48V, and 1440 for a 48V solar panel. Calculation of ...

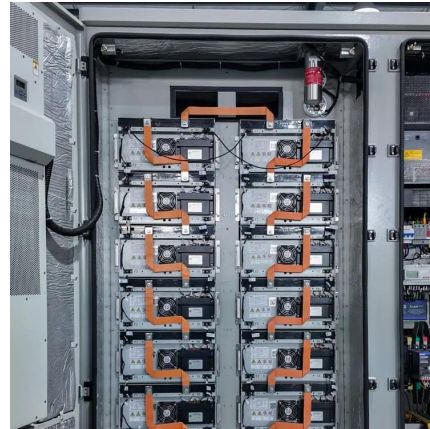
### How Many Solar Panels Does It Take to Charge a 48V Battery?

To charge a 48V battery, you typically need at least two solar panels rated at 250W each,





assuming optimal conditions. This setup provides sufficient voltage and wattage ...

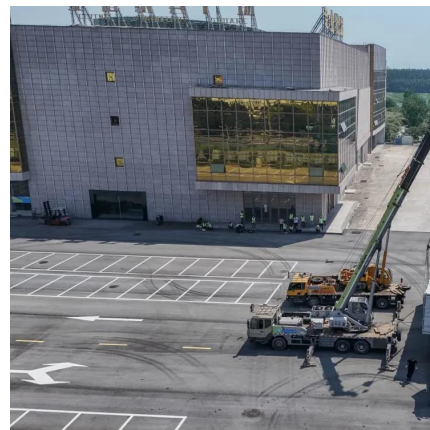


### [What Size Solar Panel to Charge 100Ah Battery?](#)

Find out what size solar panel you need to charge a 100Ah battery -- including lithium (LiFePO4) and lead acid batteries -- at your desired speed.

### **Solar Watts to Amps Calculator , Easy Amp to Watts ...**

Solar Watts to Amps Calculator calculates the solar panel amps or converts solar panel watts to amps. Check how many or watts amps is needed.



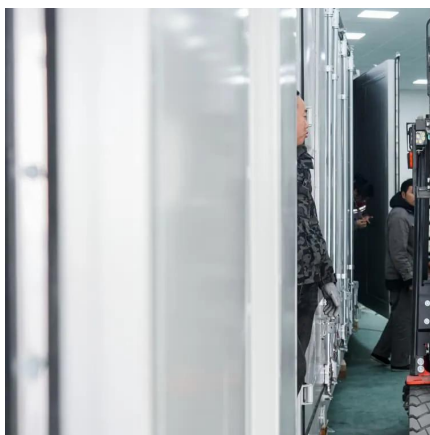
### **What Size Charge Controller Do I Need? - BougeRV ...**

A 30-amp charge controller can handle up to 360 watts of solar panel output for a 12-volt system and up to 720 watts for a 24-volt system. It's ...



## How many watts of solar panels are needed for 48v20A

In solar photovoltaic systems, understanding the power requirements serves as a foundation for determining the necessary solar panel capacity. The equation for power ...

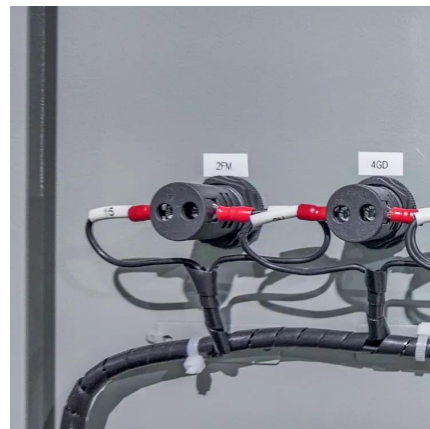


## [How Long To Charge 200ah Battery? \(Explained!\)](#)

I've used my solar batteries many times, including a 200ah lithium battery. In this post, I'll share my experience and provide insight into how long ...

## Solar Panel Size Calculator , Check Battery Charge ...

Required Solar Panel Size =  $1800\text{Wh} / (5 \text{ hours} \times 4 \text{ hours}) = 1800\text{Wh} / 20\text{h} = 90\text{W}$ . So, you would need a solar panel with at least 90W ...



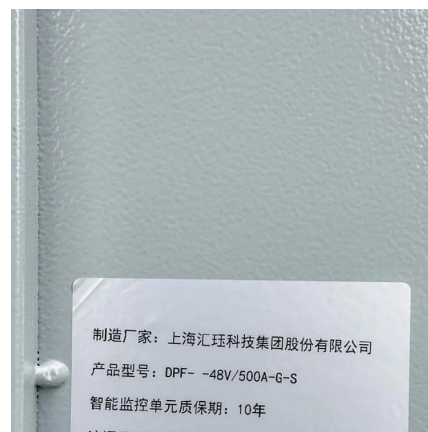
## [How Many Batteries For a 500 Watt Solar System?](#)

A 500 watt solar system can power a lot of appliances and devices, perfect for RVs, camping and even small homes. In many instances you will need batteries, but how many? And what type ...



## How Many Solar Panels Can Charge a 48V Battery?

To achieve an efficient charging voltage, you should use at least three 18V panels in series (totaling 54V) to charge a 48V battery. The current output from the panels must ...

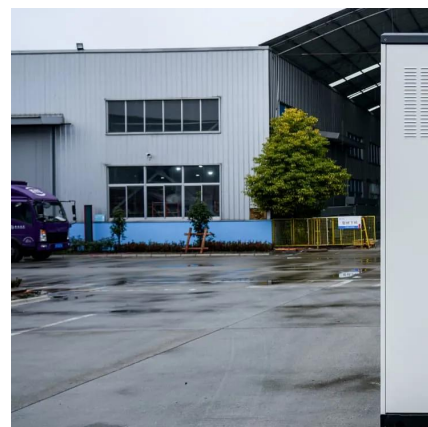


## **MPPT charge controller calculator: Find the right solar ...**

To select a charge controller, you'll need to calculate the maximum amount of current (in Amps) that the MPPT should be able to output. This max ...

## **Optimizing Solar Panels for Charging 48V Lithium Batteries: A**

How Many Solar Panels Do I Need to Charge a 48V 200Ah Battery? Calculating the number of solar panels required to charge a 48V 200Ah battery involves several factors, ...





## Solar Panel Size Calculator

You need around 1600-2000 watts of solar panels to charge most of the 48V lithium batteries from 100% depth of discharge in 6 peak sun hours with an MPPT charge controller.

## MPPT Solar Charge Controllers Explained

DC load control feature Many solar charge controllers also feature a DC load output connection, which is used for lighting and/or controlled ...



## Calculate Battery Size For Any Size Inverter (Using ...

Battery size chart for inverter Note! The input voltage of the inverter should match the battery voltage. (For example 12v battery for 12v inverter, ...

## How Many Watts Can a 10A Charge Controller Handle?

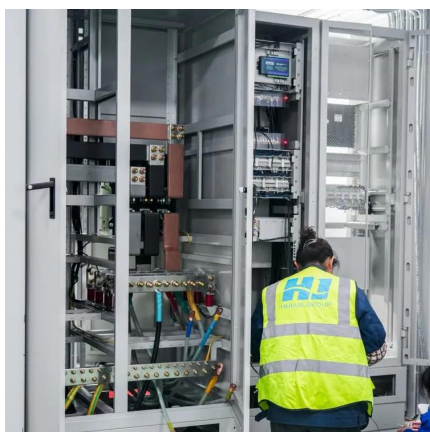
How to Calculate Charge Controller Size Charge controller amp ratings range from 1 to 60. The most widely used are 10A, 20A, 30A, 40A, 50A and 60A. Voltage ratings for charge controllers ...





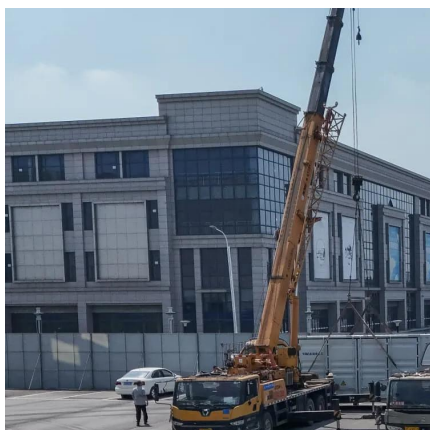
## What Size Solar Panel To Charge 48V Battery? [Updated: March ...

There are a few things to consider when determining the size of solar panel to charge a 48V battery. The first is the power output of the solar panel, which should be at least 1160W. The ...



### SmartSolar MPPT 75/10, 75/15, 100/15 & 100/20

Get the most out of your solar panels while protecting your batteries with adaptive charging. The MPPT solar charge controller automatically switches between ...



## Panel voltage for 48v battery

48V x 20A is 960 watts. Why do you only have 220 watts panels on a 48V battery? I only have 220 because it's what came with my Ecoflow Delta. The 48v battery is 22.1ah. The ...



## What Size Solar Panel to Charge 48V Battery for Efficient Energy

Wattage Options: Common solar panel sizes range from 100W to 400W; selecting the right size impacts charging efficiency and time, with larger panels providing quicker ...



## Solar Panel Size Calculator , Check Battery Charge Duration

Required Solar Panel Size =  $1800\text{Wh} / (5 \text{ hours} \times 4 \text{ hours}) = 1800\text{Wh} / 20\text{h} = 90\text{W}$ . So, you would need a solar panel with at least 90W capacity to charge your 150Ah, 12V ...

## Contact Us

---

For catalog requests, pricing, or partnerships, please visit:  
<https://www.talbert.co.za>