

How many watts does a 10A solar panel hold





Overview

Solar energy rated at 10A corresponds to a power output of 120 watts, calculated using the formula $P = V \times I$, where P is power in watts, V is voltage in volts, and I is current in amps. In common photovoltaic systems, the standard voltage can be 12V or 24V. How do you calculate solar panel wattage?

Divide the average daily wattage usage by the average sunlight hours to measure solar panel wattage. Moreover, panel output efficiency directly impacts watts and the system's overall capacity. Nevertheless, energy usage, sunshine exposure, system capacity, panel types and materials all have an impact on the calculation.

How much solar power do I Need?

If you have no plans to use a large solar panel or battery, 10 amps will be sufficient. So if you only go hiking for a few hours during summer and travel light, a 100W solar panel, the Renogy Wanderer 10A charge controller and a small battery is enough.

What is solar wattage?

Wattage refers to the amount of electrical power a solar panel can produce under standard test conditions (STC), which simulate a bright sunny day with optimal solar irradiance ($1,000 \text{ W/m}^2$), a cell temperature of 25°C , and clean panels. In simpler terms, a panel's wattage rating tells you its maximum power output under ideal conditions.

How many watts can a 10A charge controller handle?

A 10A charge controller can handle 130 to 150 watts of solar power. 12V system often use 20A charge controllers, but if it is less than 150 watts, a 10A controller is enough. Is a 10A Charge Controller Large Enough For My System?

Charge controllers are sized based on the solar system voltage and current or amps.



How many watts a solar controller should I use?

If you typically use 150 watt solar panels, it depends on the output. If it is often close to 150 watts, get a 20A solar controller to avoid overloading risks. But if the output is closer to 120 than 150, a 10A solar controller should be fine. Solar panel outputs will vary depending on the season so keep that in mind.

How many kW is a 20 watt solar panel?

Usually, it is 1.2 to 1.5 which is multiplied by the desired output. For example with a 20% buffer, the required solar panel output with Buffer (Watts) = $6 \text{ kW} \times 1.20 = 7.2 \text{ kW}$ Nevertheless, when you are choosing solar panels make sure their power ratings equal or surpass the required output to meet your energy needs and preferences.



How many watts does a 10A solar panel hold

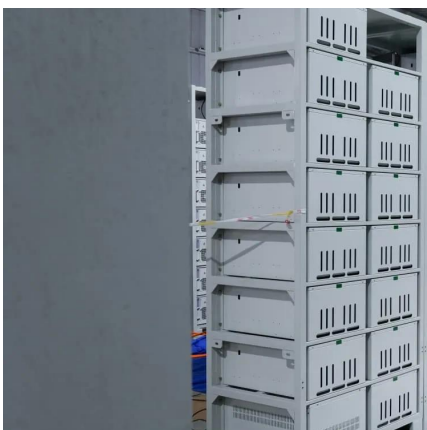


Solar Panel Amps Calculator

To calculate solar panel amperage, identify their rated power output in watts, which serves as a comparison of their electricity-generating ...

Solar Panel Amps Calculator

To calculate solar panel amperage, identify their rated power output in watts, which serves as a comparison of their electricity-generating potential. The panel's operating ...



The Complete Off Grid Solar System Sizing Calculator

Using your daily energy usage and Peak Sun Hours, and assuming a system efficiency of 70%, the calculator estimates the Wattage required for your off-grid solar system's ...

How many watts is solar energy 10a

Solar energy rated at 10A corresponds to a power output of 120 watts, calculated using the



formula $P = V \times I$, where P is power in watts, V is voltage in volts, and I is current in ...

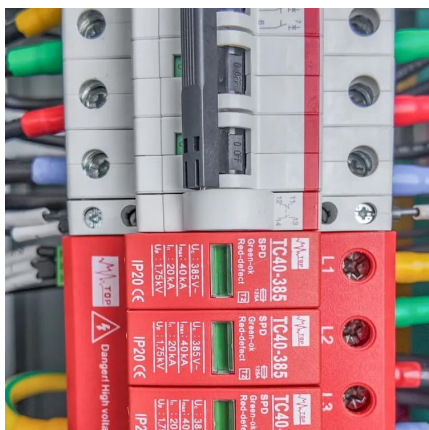


Standard Solar Panel Sizes And Wattages (100W-500W ...

To bridge that gap of very useful knowledge needed, we have compared and averaged the sizes of 100-watt to 500-watt solar panels available on the market. The goal here is to get to the ...

How many watts can a 10a solar controller use

When considering a typical system operating at a nominal voltage of 12 volts, the maximum power output of a 10A solar charge controller is ...



can you add more panels/watts to a mppt charge

For example i am using a tracer 40a at 12v mppt,. Its listed maxium is 500 watts at 12 v, i currently own 4 250w panels. if i hooked 2 ...



Solar Panel kWh Calculator: kWh Production Per Day, Month, Year

Here is how this solar output works: Let's say you have a 300-watt solar panel and live in an area with 5.50 peak sun hours per day. How many kWh does this solar panel produce in a day, a ...



How Many Solar Panels, Batteries & Inverter Do I ...

A Complete Guide About Solar Panel Installation. Step by Step Procedure with Calculation & Diagrams Below is a DIY (do it yourself) ...

[Solar Panel Sizes and Wattage Explained](#)

Over 179 (GW) of solar capacity is installed nationwide and it's capable of powering roughly 33 million homes. While it takes roughly 17 (400 ...



How many watts does a solar panel work? , NenPower

HOW MANY SOLAR PANELS ARE REQUIRED TO POWER A HOUSE? The number of solar panels necessary to power an average house ...



How many watts does a solar panel provide? , NenPower

1. Solar panels typically provide an output ranging from 150 to 400 watts, depending on various factors, including the type of panel and installation conditions.2. A single ...



Wattage of a Solar Panel: How Many Watts Does a ...

How Many Watts Does A Solar Panel Produce? You can calculate the output of your solar panel by multiplying the rated wattage of the product with the total ...

Battery Runtime Calculator , How Long Can A Battery ...

Use Battery Runtime Calculator to Calculate runtime of your battery. Learn how long can a battery last. Good for solar and car battery ...



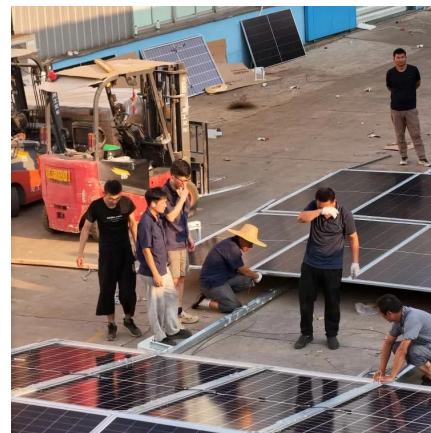


How Many Watts Can a 10A Charge Controller Handle?

A 10A charge controller can handle 130 to 150 watts of solar power. 12V system often use 20A charge controllers, but if it is less than 150 watts, a 10A controller is enough.

Solar Panel Wattage Explained: How Many Watts Do ...

Confused about solar panel wattage? Learn how many watts you need, how solar output works, and how to calculate the right solar setup for ...



[How Many Panels In 1kW, 3kW, 5kW, 10kW, 20kW ...](#)

Alright, figuring out how many panels you need for different sizes of solar systems is really easy. We will show you how to determine the number of panels ...

[Solar Panel Sizes and Wattage Explained](#)

Over 179 (GW) of solar capacity is installed nationwide and it's capable of powering roughly 33 million homes. While it takes roughly 17 (400-watt) panels to power a home.



Standard Solar Panel Sizes And Wattages (100W ...

To bridge that gap of very useful knowledge needed, we have compared and averaged the sizes of 100-watt to 500-watt solar panels available on the ...



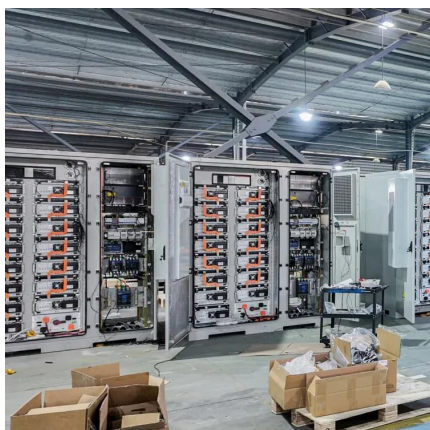
How Many Watts Does A Solar Panel Produce

How do you determine how much electricity A solar panel Produces? Solar panels differ in manufacturing, efficiency, and output, so it is very difficult to exactly state how many ...



Solar Panel Wattage Explained: How Many Watts Do You Need?

Confused about solar panel wattage? Learn how many watts you need, how solar output works, and how to calculate the right solar setup for your home, RV, or cabin.





What Size Solar Panel Do I Need to Charge a 12v Battery?

How many solar panels you need to charge a 12v battery? Calculating the number of solar panels for your 12V battery depends on understanding your specific energy requirements. Solar ...



How Many Watts Can a 10A Charge Controller Handle?

This solar panel wattage calculator allows you to calculate the recommended solar panel wattage according to the energy consumption of ...

Solar Panel Wattage Calculator

The solar panel wattage calculator will help you find your recommended solar panel wattage requirement depending on your electricity ...



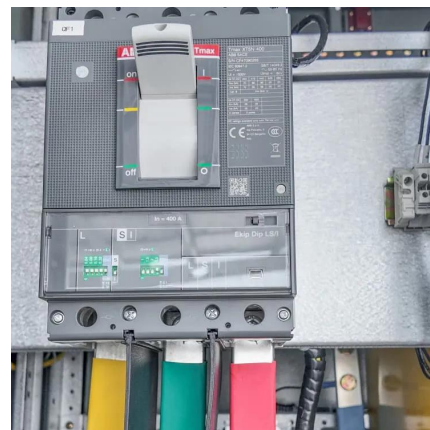
40 Watt Solar Panel: Everything You Need To Know - ...

How many amps does a 40-watt solar panel produce To calculate the value of amps or current use this formula ($\text{Amps} = \text{Watt/Volts}$) Under ideal ...



[Solar Panel And Battery Sizing Calculator](#)

Specify the solar panel wattage you plan to use. The result will estimate how many panels you need to meet your energy goals. Enter the battery storage capacity, allowing the ...



How many watts can a 10a solar controller use , NenPower

When considering a typical system operating at a nominal voltage of 12 volts, the maximum power output of a 10A solar charge controller is about 120 watts.

How Many Solar Panels Can a Charge Controller Handle?

Calculate How Many Solar Panels Per Charge Controller The voltage of a solar array should not be greater than the maximum input voltage (VOC) of a charge controller. If the controller VOC ...





How many watts is solar energy 10a

1. Solar energy rated at 10A corresponds to a power output of 120 watts, calculated using the formula $P = V \times I$, where P is power in watts, V is ...

[Solar Panel And Battery Sizing Calculator](#)

Specify the solar panel wattage you plan to use. The result will estimate how many panels you need to meet your energy goals. Enter the ...



Solar Panel Wattage Calculator

This solar panel wattage calculator allows you to calculate the recommended solar panel wattage according to the energy consumption of your household appliances. If you want ...

The Complete Off Grid Solar System Sizing Calculator

Using your daily energy usage and Peak Sun Hours, and assuming a system efficiency of 70%, the calculator estimates the Wattage required for ...



Contact Us

For catalog requests, pricing, or partnerships, please visit:
<https://www.talbert.co.za>