

How many watts and voltages are there per square meter of photovoltaic panel





Overview

How many Watts Does a solar panel produce per square foot?

Dividing the specified wattage by the square footage of the solar panel will give us just this result: The average solar panel output per area is 17.25 watts per square foot. Let's say that you have 500 square feet of roof available for solar panel installation.

What is solar panel watts per square meter (W/M)?

Solar panel watts per square meter (W/m) measures the power output of a solar panel based on its size. Compare solar panels to see which generates most electricity per square meter. A higher W/m value means a solar panel produces more power from a given area. This can help you determine how many solar panels you need for your energy needs.

How do you calculate solar panel output in watts per square meter?

The formula to calculate the solar panel output and how much energy solar panels produce (in watts) using watts per square meter is as follows: Solar Panel Output (W) = Watts per Square Meter (W/m²) × Area of Solar Panel (m²).

How many volts is a solar panel?

For example, my solar panel has a Max. System Voltage rating of 1000 Volts, which is the common rating for most solar panels. However, some solar panels may be rated as low as 600 Volts or as high as 1500 Volts.

What does wattage mean on a solar panel?

You'll often see it referred to as "Rated Power", "Maximum Power", or "Pmax", and it's measured in watts or kilowatts peak (kWp). For example, the nameplate from my solar panel specifies a Wattage output of 100W, meaning that the solar panel is capable of producing 100 Watts of power under ideal conditions.



What is a solar power per square meter calculator?

It also includes wiring, inverter, charge controller, and battery bank (if used). A solar power per square meter calculator takes details regarding these factors and then gives the accurate output generated by the solar panel per square meter. After this, it's time to learn about solar panel output calculators.



How many watts and voltages are there per square meter of photov

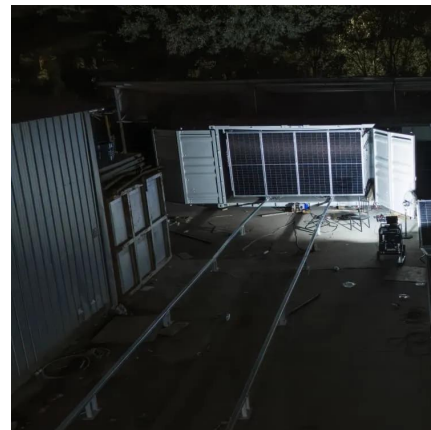


How many square meters is a solar photovoltaic panel?

1. Solar photovoltaic panels vary in size, but a standard residential unit typically measures around 1.6 square meters. This measurement allows ...

[A Complete Guide To Solar Panel Output](#)

Solar panel efficiency factors (Reference: solarcalculator) Solar Panel Size In terms of solar panel output, it is best to separate solar ...



Watts Per Square Meter Solar Panel - The Go-to Guide

How many Watts per Square Meter for a Solar Panel? Here is a breakdown of how much energy a solar panel generates.

How many watts of solar photovoltaic power generation per square meter

The average solar panel generates between 150



to 200 watts per square meter, 2. This output depends on factors like location, orientation, and panel efficiency, 3. Enhanced ...



[Solar Panel Watts Per Square Meter Explained](#)

Learn how to measure solar panel efficiency using solar panel watts per square meter with this comprehensive guide.



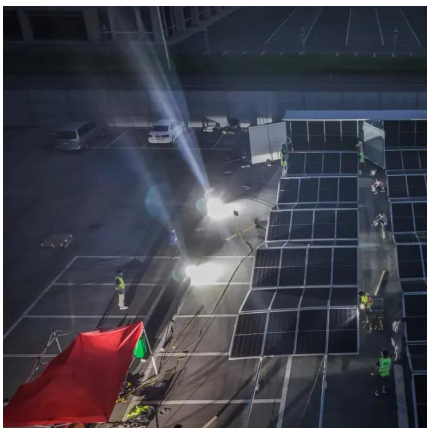
Standard Solar Panel Sizes And Wattages (100W-500W ...

To bridge that gap of very useful knowledge needed, we have compared and averaged the sizes of 100-watt to 500-watt solar panels available on the market. The goal here is to get to the ...



How Many Solar Panels Do I Need To Power a House ...

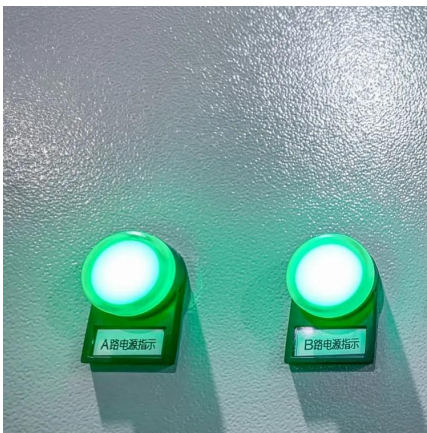
Next, determine how many peak sun hours your location gets A big factor in determining how many solar panels you need to power your home is the ...





Solar Panel Wattage Explained: How Many Watts Do ...

Confused about solar panel wattage? Learn how many watts you need, how solar output works, and how to calculate the right solar setup for ...



Solar Panel Power Per Square Meter: How to Calculate Efficiency

This article will guide you through the essentials of calculating solar panel power per square meter, including the factors that influence efficiency and how to make the most of ...

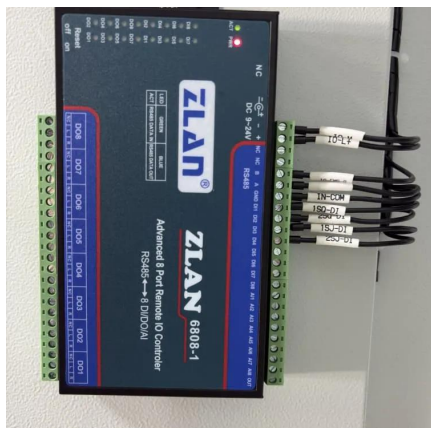


Solar Panel Ratings Explained - Wattage, Current, Voltage, and

Different electrical ratings (Watt, Amps, and Volts) can necessitate different equipment, and certain panels may be better suited for particular applications and ...

[Solar Power per Square Meter Calculator](#)

How many Watts per Square Meter for a Solar Panel? Here is a breakdown of how much energy a solar panel generates.



How many watts of photovoltaic solar energy per square meter

Photovoltaic solar energy can generate between 150 to 200 watts per square meter under optimal conditions. To elaborate, various factors influence this output, including ...



Standard Solar Panel Sizes And Wattages (100W ...

To bridge that gap of very useful knowledge needed, we have compared and averaged the sizes of 100-watt to 500-watt solar panels available on the ...

How Many Solar Panels to Power a House , SolarLab

The nominal power of a solar and photovoltaic panel The rated power is the maximum power that the panel is capable of producing under ...



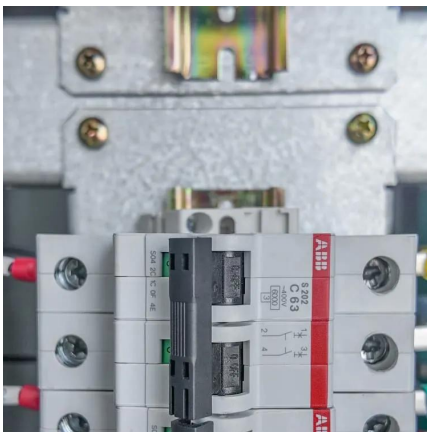
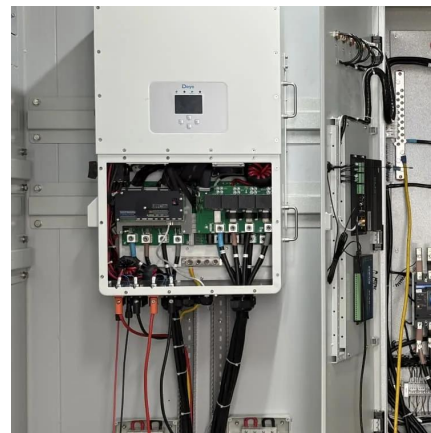


Solar Panel Watts Per Square Foot: 'We (Finally) Did The Math'

Check the standard solar panel size (area) and the output wattage of the whole panel. Divide the solar panel wattage (for 100W, 150W, 170W, 200W, 220W, 300W, 350W, 400W, 500W) by the ...

[How to calculate the power of a solar panel?](#)

To calculate the power of a solar panel per square meter, divide the panel's rated power (or peak power) by its surface area.



Solar Basics: Voltage, Amperage & Wattage , The Solar Addict

Learn how voltage, amperage, and wattage work in solar panels with our clear and easy-to-understand guide.

[Solar Power per Square Meter Calculator](#)

A solar power per square meter calculator takes details regarding these factors and then gives the accurate output generated by the solar panel per square meter.



How To Calculate Solar Panel Output? - Glyde Solar

250-watt panel x 5 hours x .75 = 937.5 / 1000 = 0.937 watt-hours per day
3. How to calculate solar panel output amperage? Divide the power in watts by the voltage in volts to get the ...

Solar Panel Ratings Explained - Wattage, Current, ...

Different electrical ratings (Watt, Amps, and Volts) can necessitate different equipment, and certain panels may be better suited for particular ...



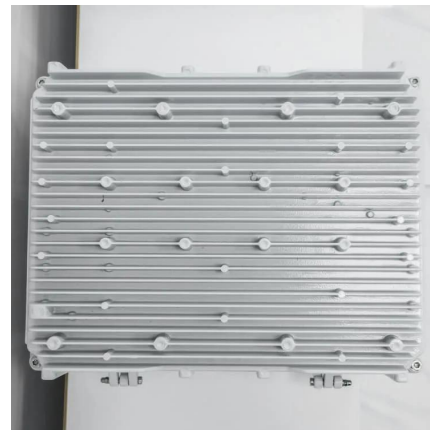
Solar Panel Wattage Explained: How Many Watts Do You Need?

Confused about solar panel wattage? Learn how many watts you need, how solar output works, and how to calculate the right solar setup for your home, RV, or cabin.



How many watts does one square meter of solar energy convert?

A common figure for solar panels is approximately 150 to 200 watts per square meter, which can change based on factors like panel efficiency, sunlight intensity, and ...



[How many watts of solar photovoltaic power ...](#)

The average solar panel generates between 150 to 200 watts per square meter, 2. This output depends on factors like location, orientation, and ...

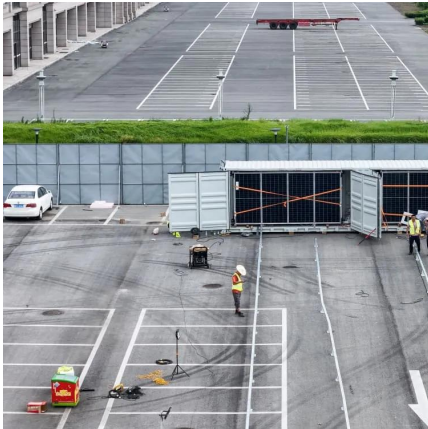
[What Voltage Does a Solar Panel Produce? The ...](#)

Solar panels are designed to produce their rated voltage at a specific level of sunlight, typically 1,000 watts per square meter. As sunlight ...



[Solar panel sizes & dimensions: explained \[UK, 2025\]](#)

The key factor to focus on, therefore, is watts per square metre (W/m^2), which adjusts the panel's power output for its physical size. This is essentially the same measure as ...



Solar Panel Power Per Square Meter: How to ...

This article will guide you through the essentials of calculating solar panel power per square meter, including the factors that influence efficiency ...



How many watts of photovoltaic solar energy per meter

A thorough exploration begins with solar irradiance, which varies depending on the sun's intensity at a particular location and time. Influenced ...

How Many Volts Does a Solar Panel Generate? - ...

Solar panel voltage is a critical factor in solar energy production, with outputs ranging from 5 to 40 volts, depending on the type and conditions.





Calculate Solar Panel kWp & KWh (KWh Vs. KWp

Average hours of sunlight x solar panel wattage x 75% (for dust, pollution, weather) = daily wattage output. So, if you're getting 6 hours of ...

How many watts of solar photovoltaic power ...

The examination of solar photovoltaic power generation underscores its profound significance in contemporary energy discourse. The ...



Contact Us

For catalog requests, pricing, or partnerships, please visit:
<https://www.talbert.co.za>